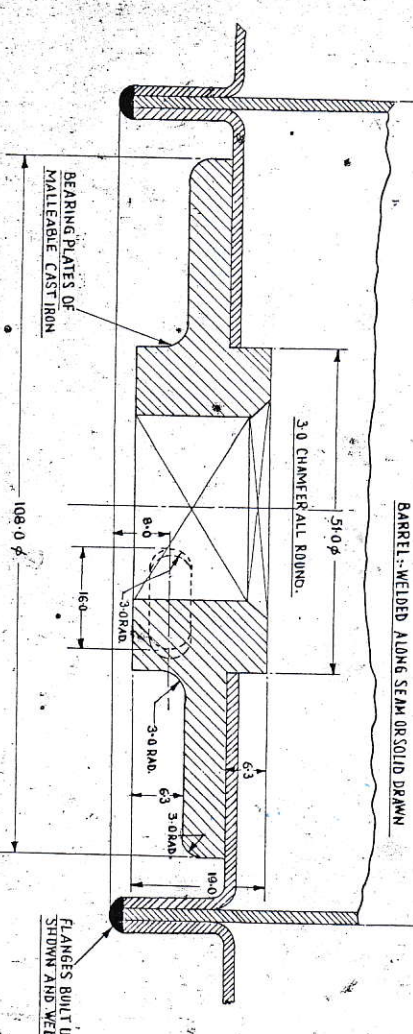
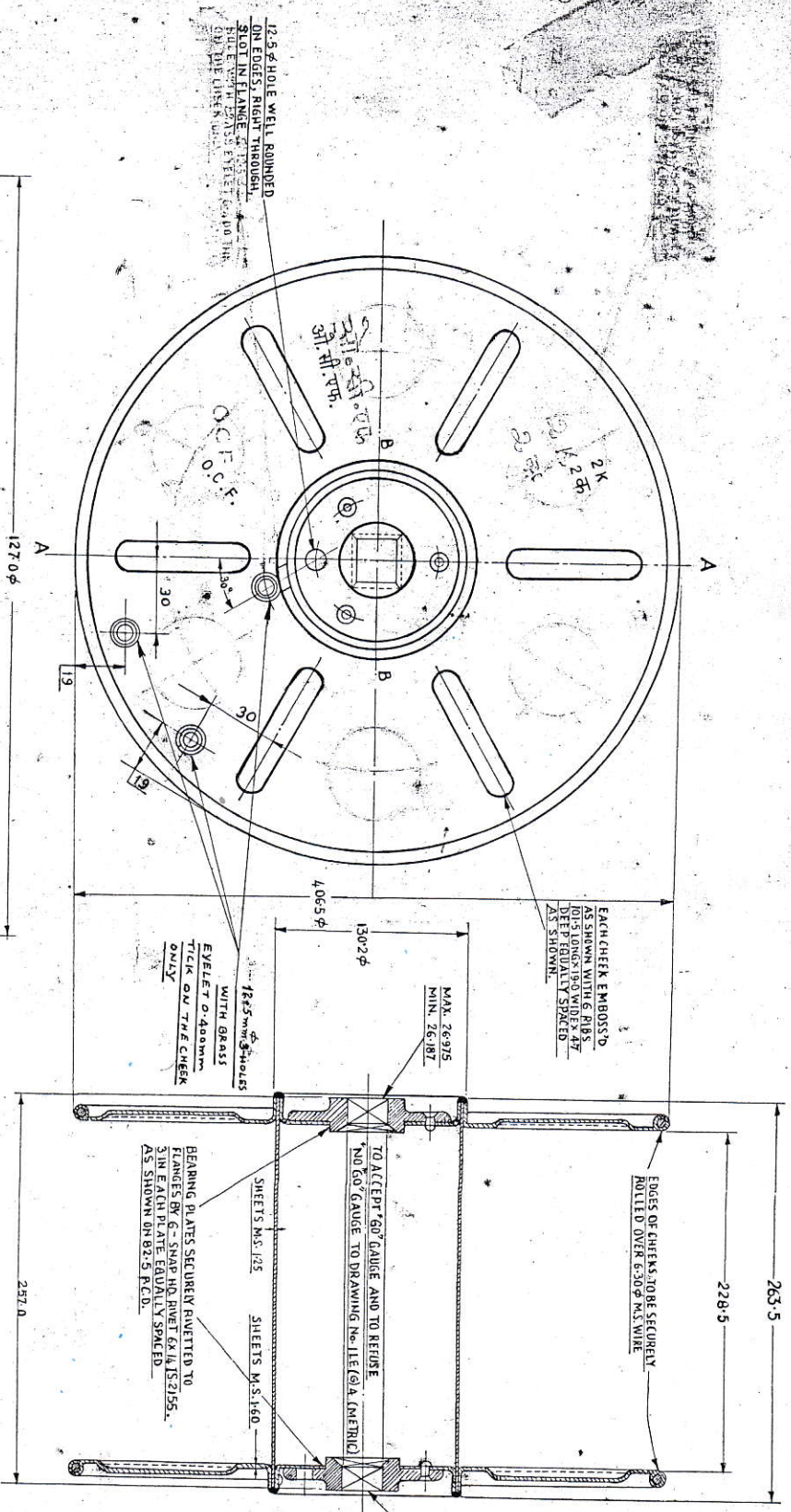


DIMENSIONS ARE IN MILLIMETERS.



SECTION ON 'AA'

NOTE:-
(i) WELDING IN ACCORDANCE WITH IS 696.
(ii) SAMPLE SHOULD BE GOT APPROVED BEFORE COMMENCING BULK MANUFACTURE.

PROVISIONAL

REF: I.R.S. M 3973 (METRIC)

No. of	DESCRIPTION	ITEM	STANDARD	MATERIAL	REMARKS
6	HOLE 6.3φ EQUI-SPACED ON 28φ P.C.D.	SELECTED	26.825		
2	TWO HOLES OF 12.5φ ON CHEEK HOLE 26.825				
AMENDMENTS					

REEL, CABLE, STEEL 406.5mm	
FLANGE 228.5mm INSIDE	
TRAVERSE 127.0mm O.D. CORE	
DATE: 11-7-72	

Y3/1/C 0819

ENLARGED SECTION 'BB'