

8

7

6

5

4

3

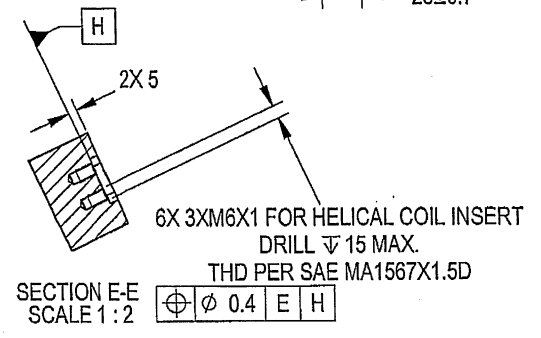
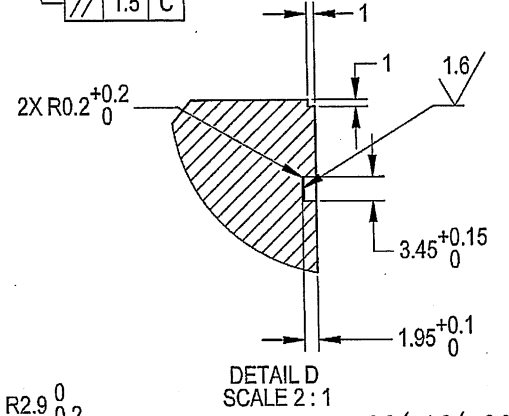
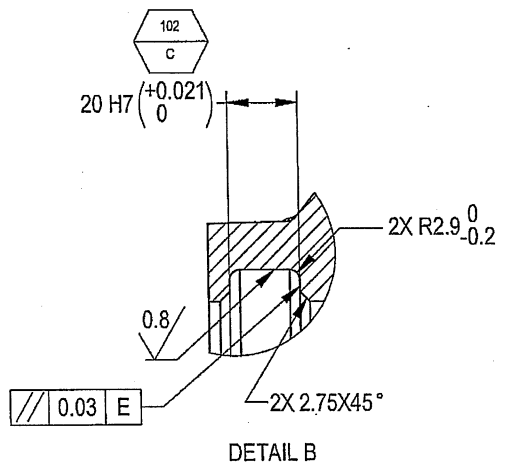
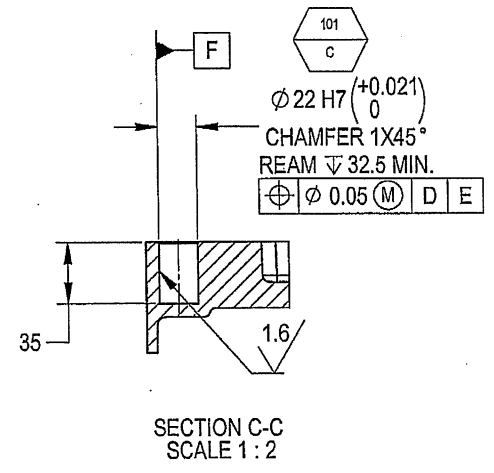
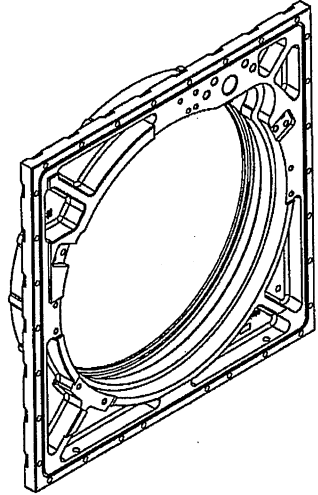
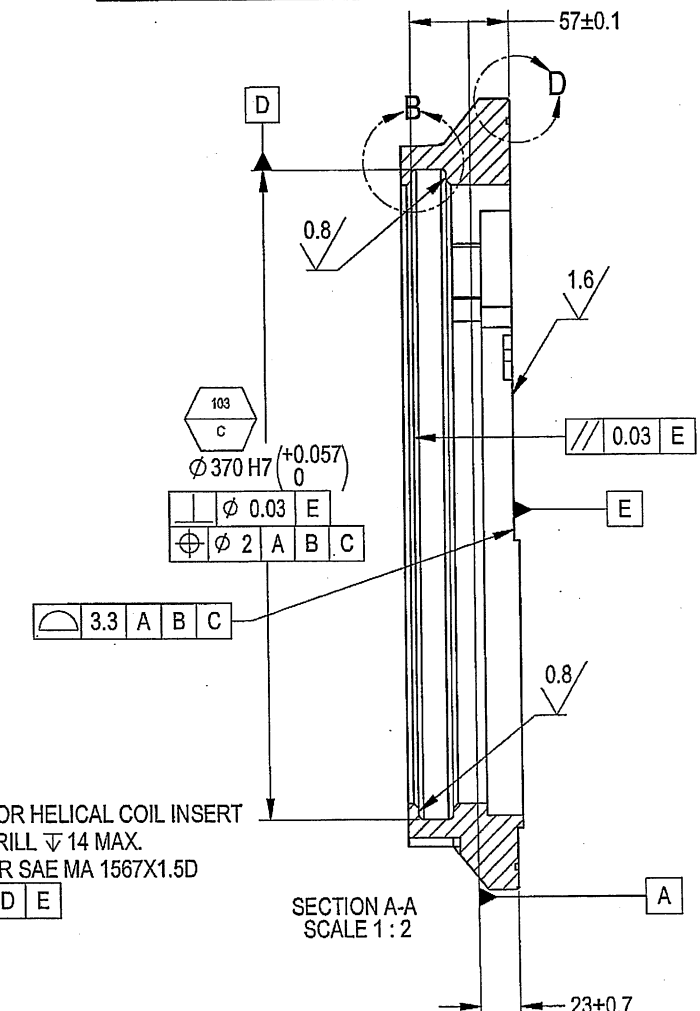
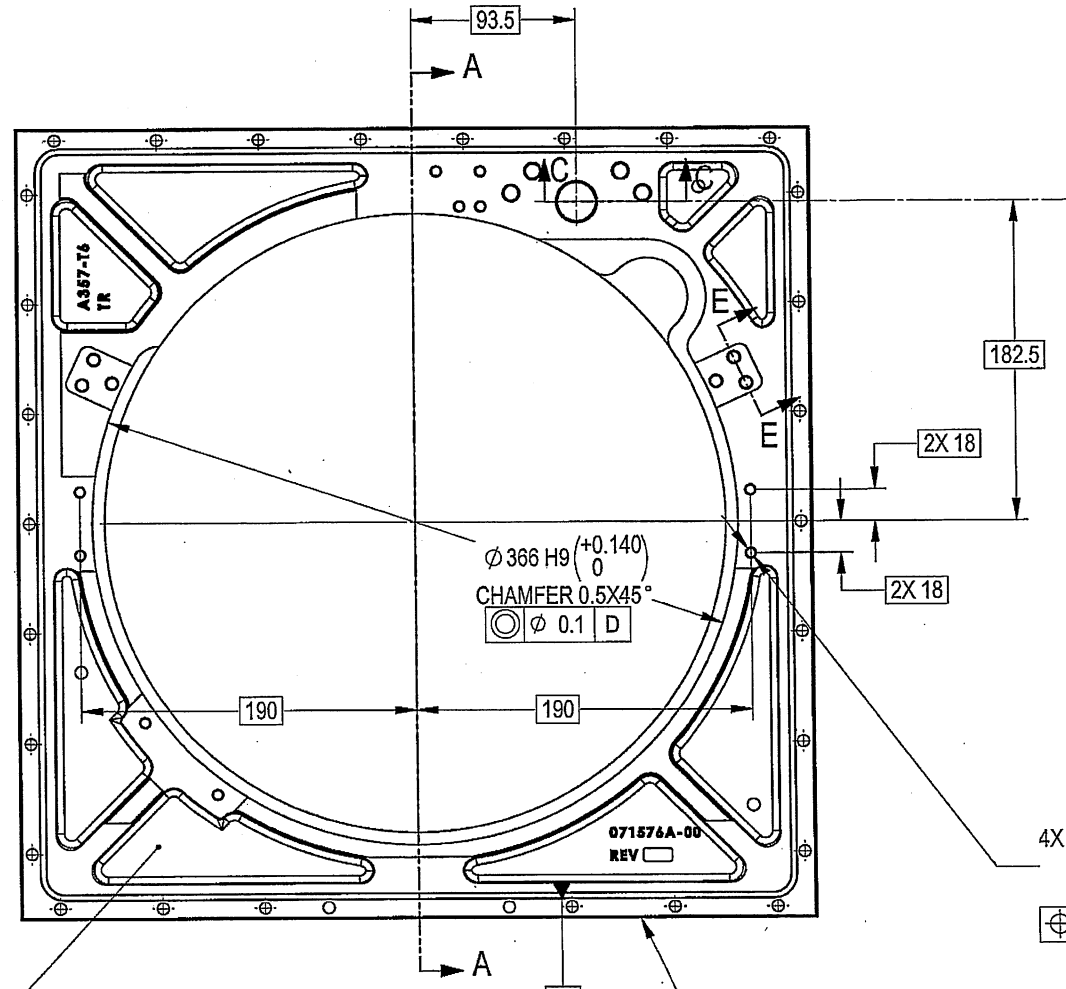
1

THIS DOCUMENT AND THE INFORMATION CONTAINED IN IT ARE PROPRIETARY AND CONFIDENTIAL TO OFT. NO PERSON OR ENTITY IS ALLOWED TO COPY, REPRINT, REPRODUCE OR PUBLISH ANY PART OF THIS DOCUMENT, NOR DISCLOSE ITS CONTENTS TO OTHERS, NOR MAKE ANY USE OF IT, NOR ALLOW OR ASSIST OTHERS TO MAKE ANY USE OF IT UNLESS BY THE PRIOR WRITTEN EXPRESS AUTHORIZATION OF OFT AND THEN ONLY TO THE EXTENT AUTHORIZED.
COPYRIGHT-OFT.

SHEET REV STATUS
ALL SHEETS ARE THE SAME REVISION

DWG		REV		REVISION RECORD		
Y17142A-00		SH 1		DESCRIPTION	DATE	APVD
01	ECO	Fraser	23-Jul-17	O. Berman		
-		Released	30-Apr-18	L. Goldstein		

- NOTES:
- INTERPRET THIS DRAWING IAW ASME Y14.100M.
 - MATERIAL: SEE FN 1.
(BASE MATERIAL: ALUMINIUM ALLOY SAND CASTING A357 T6 PER AMS-A-21180 CL12).
 - CASTING DATUMS: A,B,C ARE SHOWN ON SHEET 3, FOR REFERENCE ONLY.
 - DEBURR AND REMOVE SHARP EDGES APPROX. 0.3X45°.
 - GENERAL TOLERANCES ACCORDING TO ISO 2768-m.
 - QUALITY ASSURANCE PROVISIONS:
6.1 QUALITY ASSURANCE PROVISIONS FOR THIS ITEM PER RDMQD00012P.
6.2 MAJOR CHARACTERISTICS NRS 101 TO 113
 - PARENTHEICAL FIGURES ARE FOR REFERENCE ONLY.
 - PACKAGING AND PACKING:
THE FINISHED PART SHALL BE PRESERVED AND PACKAGED IN ACCORDANCE WITH COMMERCIAL PRACTICE.
 - IDENTIFY PART PER MIL-STD-130 RUBBER STAMP WITH EPOXY INK PER A-A-56032 TYPE II IN CONTRASTING COLOR. CHARACTERS MINIMUM TEXT HEIGHT 1.25 MM. OR IDENTIFY BY LABEL, MEETING REQUIREMENTS OF MIL-STD-202F METHOD 215J. LOCATION APPROX. AS SHOWN.



(WEIGHT APPROX.: 7.70 Kg.)

UNLESS OTHERWISE SPECIFIED		SIGNATURE		DATE		ORDNANCE FACTORY TIRUCHIRAPPALLI	
DIMENSIONS ARE IN MM PER ASME Y14.5M - 1994		DRAWN		DATE		FOR: BASE ROTATING FINISHED	
TOLERANCES		CHECKED		HOS/DDO		TITLE	
LINEAR		HOS/DDO		OFFICER/PRODN		BASE ROTATING, MACH	
ANGULAR		OFFICER/QC		OFFICER/DDO		OF: 12.7MM SRCG	
SEE NOTE 4		OFFICER/QC		OFFICER/DDO		SIZE	
1st ANGLE PROJECTION		OFFICER/QC		OFFICER/DDO		CAGE CODE	
		OFFICER/QC		OFFICER/DDO		DWG NO	
		OFFICER/QC		OFFICER/DDO		Y17142A-00	
		OFFICER/QC		OFFICER/DDO		REV	
		OFFICER/QC		OFFICER/DDO		-	
		OFFICER/QC		OFFICER/DDO		SCALE	
		OFFICER/QC		OFFICER/DDO		1/2	
		OFFICER/QC		OFFICER/DDO		AUTOMATED DRAWING (SW)	
		OFFICER/QC		OFFICER/DDO		SHEET 1 OF 3	

PROJECT OFFICER

SURFACE TEXTURE IN Micro M

FLM Control

8

7

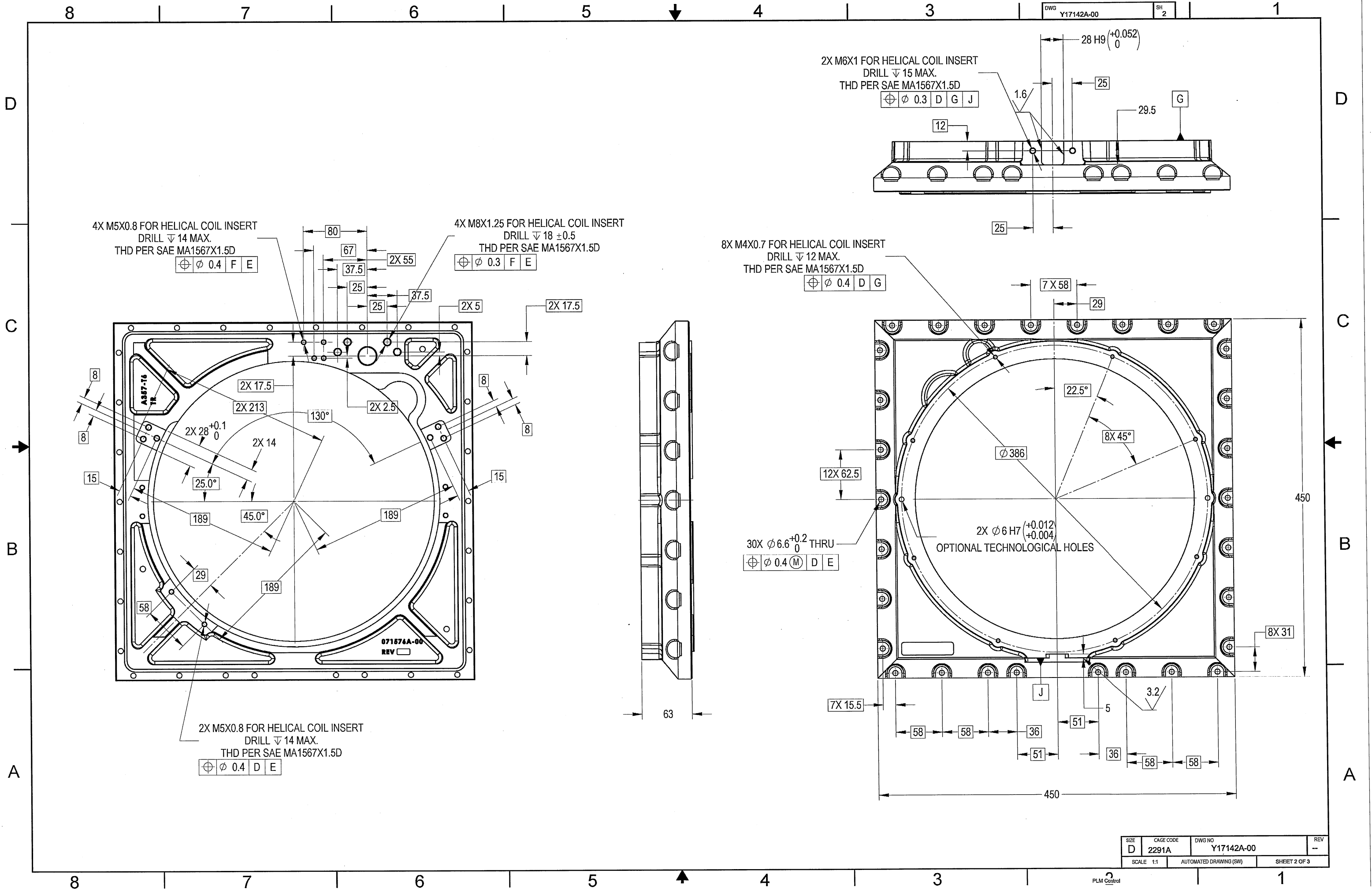
6

5

4

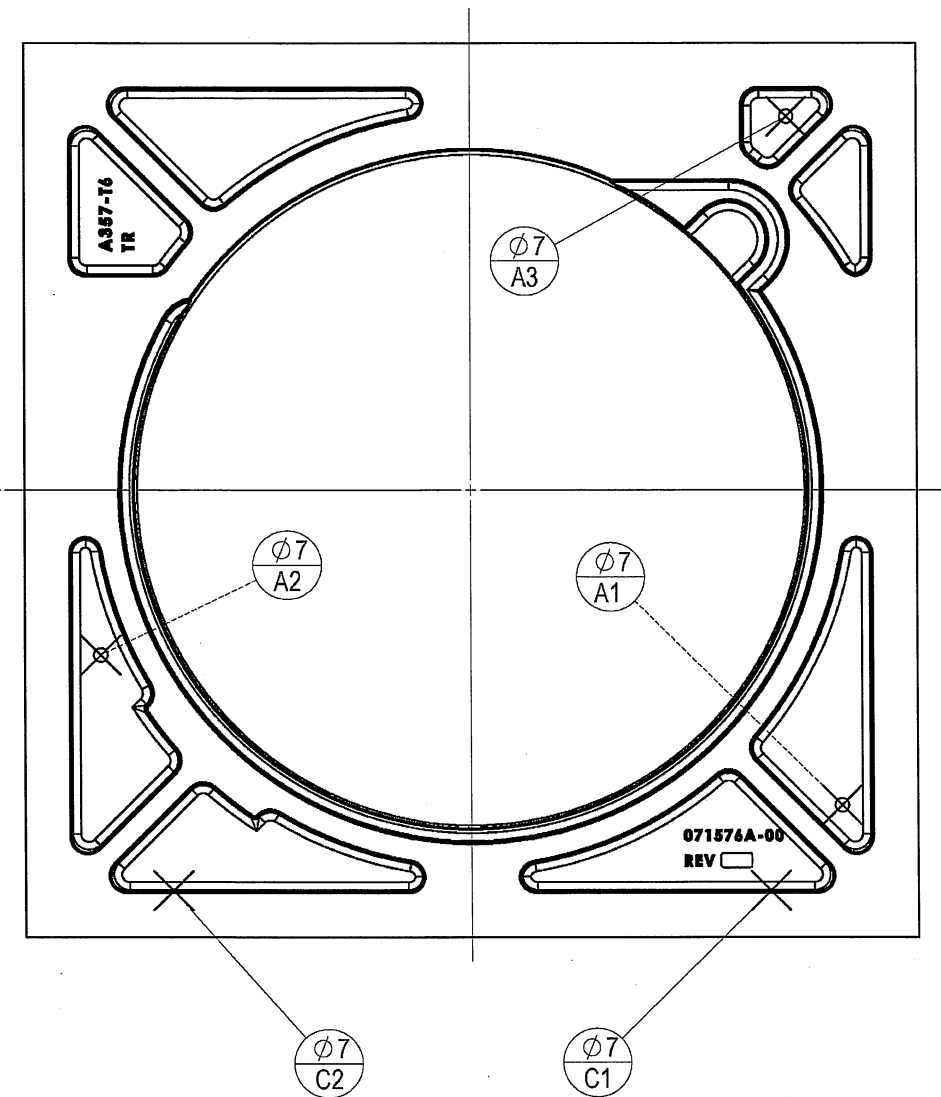
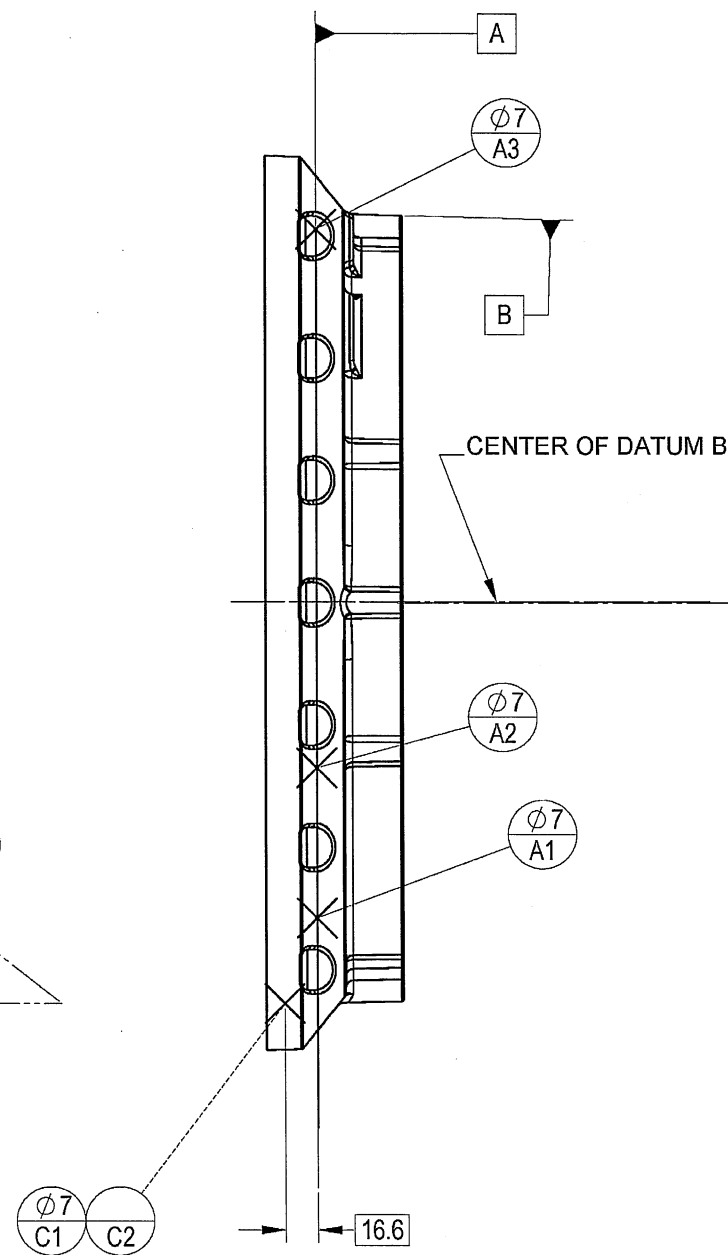
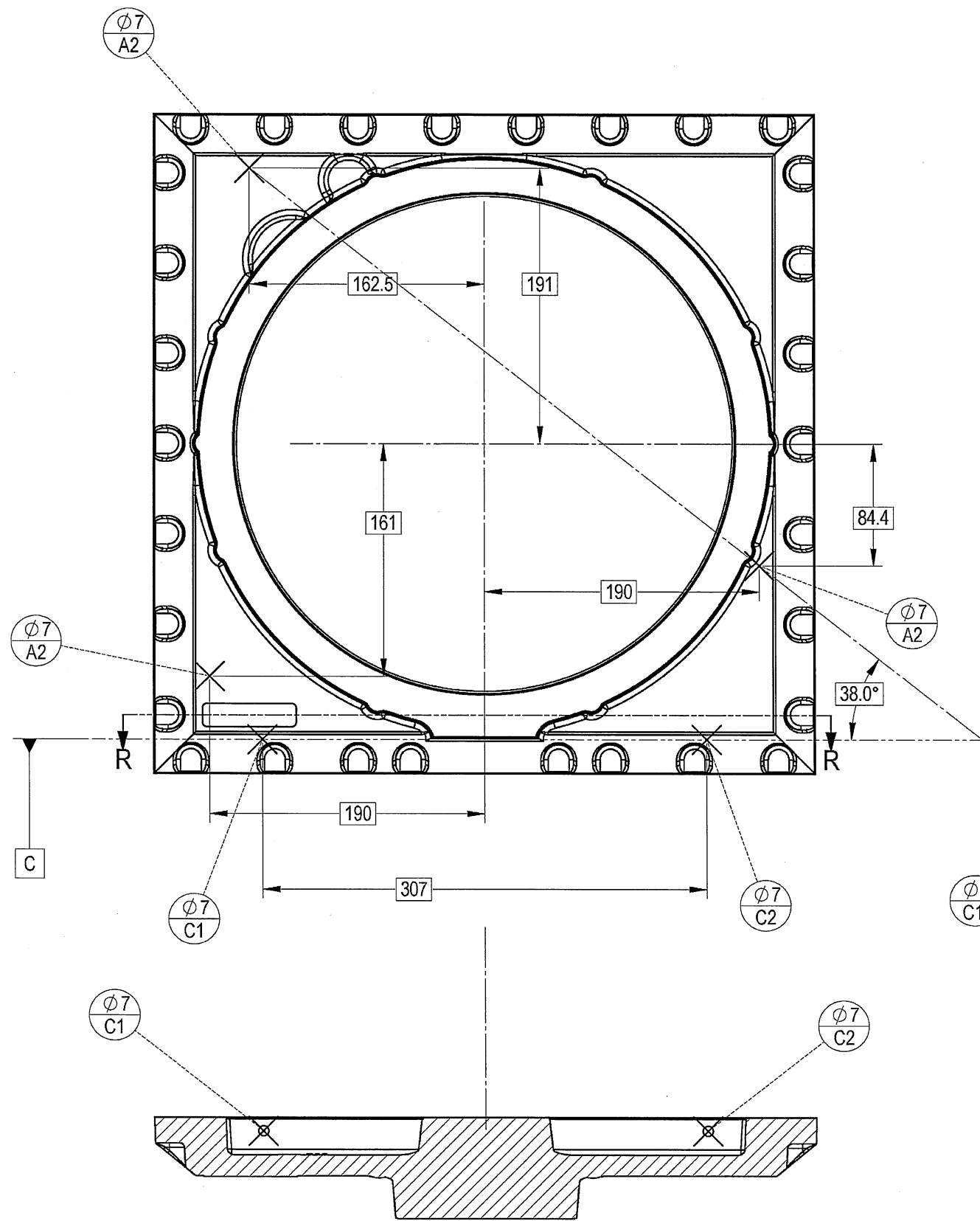
3

1



SIZE	CAGE CODE	DWG NO	REV
D	2291A	Y17142A-00	--
SCALE 1:1		AUTOMATED DRAWING (SW)	SHEET 2 OF 3

PLM Control



SECTION R-R
SCALE 1:2

SHEET 3 - CASTING DATUMS (FOR REFERENCE ONLY)

SIZE D	CAGE CODE 2291A	DWG NO Y17142A-00
SCALE 1:1	AUTOMATED DRAWING (SW)	
		SHEET 3 OF 3

OFT

ASSEMBLY PARTS LIST

Assembly Parts List For: Y17142A-00

Rev: -

Status: Released

Description: BASE ROTATING, MACH

FN	CMD	PART NUM	ECO	DESCRIPTION	MB	QTY	U/M	REF. DES./REMARKS	MFG. PN / CUSTOMER	LA	LI
1	CS	071576A-00		BASE ROTATING, CASTING	P	1	Each				