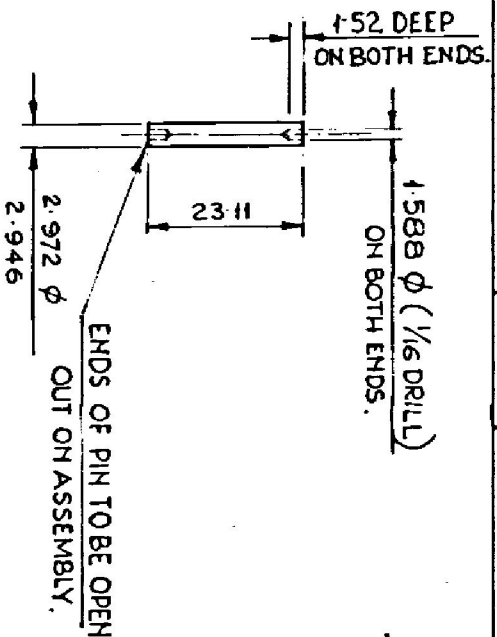


621100-5165

ON DRAWING CONVENTIONS CONFORM TO J S G - 0104
 UNITS DIMS. ARE IN mm



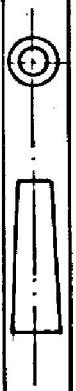
NOTE:-
 WHERE TOLERANCES ARE NOT SHOWN
 DIMENSIONS IN WHOLE NUMBER OR WITH ONE
 DECIMAL PLACE $\pm 0.27 \text{ mm}$ DIMENSIONS WITH TWO
 DECIMAL PLACES $\pm 0.13 \text{ mm}$.

METRIC

3-1-97 23645-SA PROFORMA CHANGED, EXPLANATION NOTES & PROTECTIVE FINISH AMENDED, NOTED ON BOTH ENDS, ADDED, NEG. RE-TRACED AND DRG. RE-SEALED. PREVIOUS D.C. NOS. 15025-SA, 15580-SA & 18155-SA

DATE	AUTHY.	BRIEF RECORD		ZONE	COPY	COPY
SEALED:- D.C. No. 15025-SA, DT. 10.2.77.	CHD.	TRD. <i>Chd</i>	COMP. <i>Handl</i>			
SCALE:- 1:1		EST. MASS				
DT 03.1.97		APPROVED	19-6-67			
		NEG. RE-TRACED.				

MATERIAL	BS 1429:1980 Gr. 070	AHSP	CQA(SA), ICHAPUR
H.T./HARDNESS	A72 ND ANNEALED	ASSY	1005-001594, 1005-001595
PROTECTIVE FINISH	PHOSPHATE TO SPECN. 355:0465-01: 1988 CLASS I, OIL FINISH.	D.S. CAT NO.	5315-001773
		PART. NO.	
		DGNR'S REF.	ARDE 657/95



NOMENCLATURE	PIN RETAINING LOCKING CATCH.