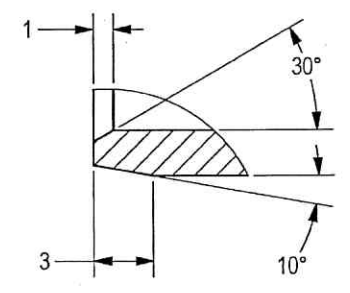
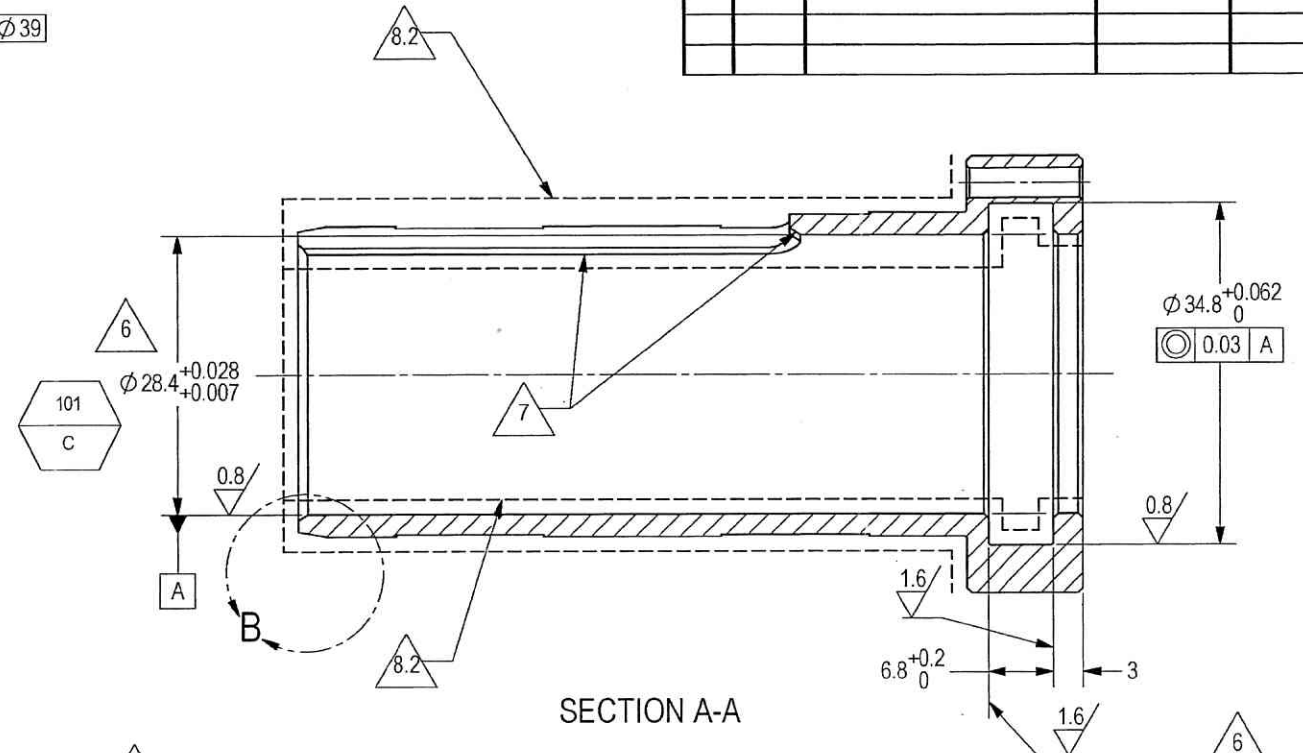
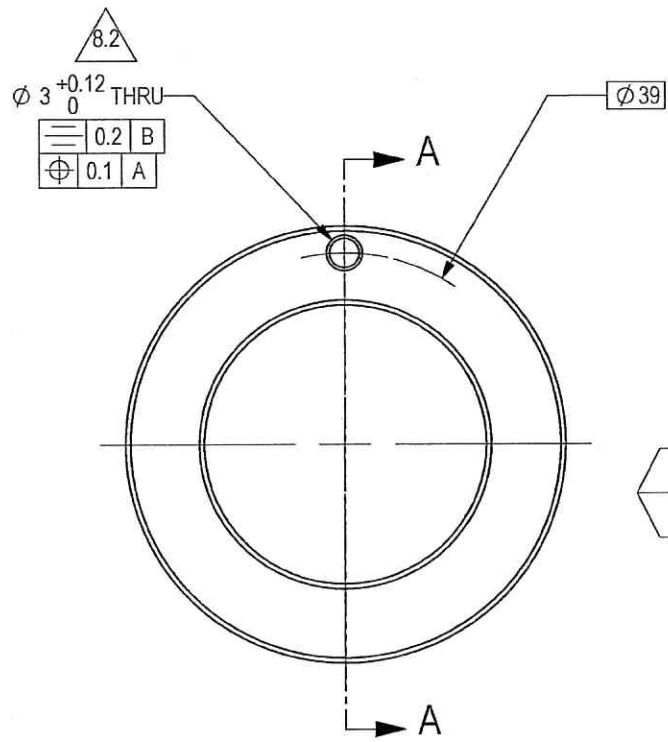


THIS DOCUMENT AND THE INFORMATION CONTAINED IN IT ARE PROPRIETARY AND CONFIDENTIAL TO OFT. NO PERSON OR ENTITY IS ALLOWED TO COPY, REPRINT, REPRODUCE OR PUBLISH ANY PART OF THIS DOCUMENT, NOR DISCLOSE ITS CONTENTS TO OTHERS, NOR MAKE ANY USE OF IT, NOR ALLOW OR ASSIST OTHERS TO MAKE ANY USE OF IT UNLESS BY THE PRIOR WRITTEN EXPRESS AUTHORIZATION OF OFT AND THEN ONLY TO THE EXTENT AUTHORIZED.
COPYRIGHT-OFT.

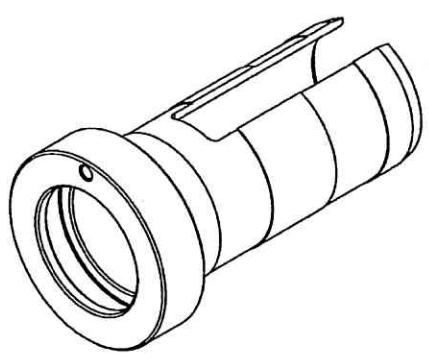
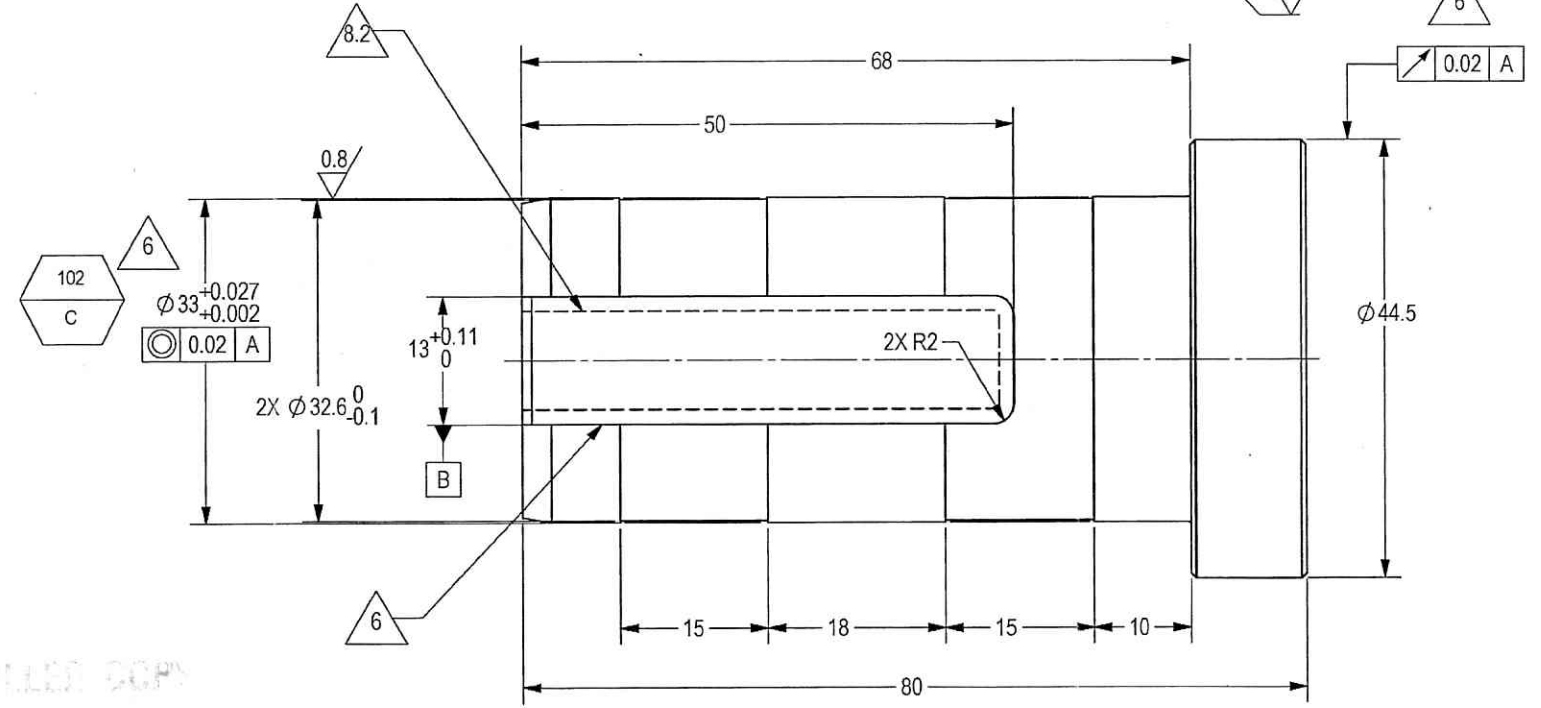
SHEET REV STATUS
ALL SHEETS ARE THE SAME REVISION

REVISION RECORD				
REV	ECO	DESCRIPTION	DATE	APVD
01	VY174/00	Restricted	02-Jun-15	D. Nave
--	T00065	Identical To Previous Released	09-Apr-18	L. Goldshtein

- NOTES:
- INTERPRET THIS DRAWING IAW ASME Y14.100M.
 - MATERIAL: COPPER ALLOY BAR 51000 H02 / H04 PER ASTM-B-139 (OR EQUIVALENT).
 - UNLESS OTHERWISE SPECIFIED, UNDEFINED MACHINED FILLET RADII SHALL BE 0.2...0.3.
 - DEBURR AND REMOVE SHARP EDGES, APPROX. 0.2X45 Deg.
 - GENERAL TOLERANCES ACCORDING TO ISO 2768-m.
 - INSPECT DIMENSIONS BEFORE MACHINING DEFINED SLOT.
 - DEBURR AND REMOVE SHARP EDGES, APPROX. 0.3X45 Deg. MANUAL REMOVAL PERMITTED.
 - FINISH:
 - BLACK CHEMICAL FINISH PER MIL-F-495E.
 - THE SURFACES MARKED BY "8.2" AND DEFINED HOLE ARE TO BE FREE OF FINISH.
 - QUALITY ASSURANCE PROVISIONS:
 - QUALITY ASSURANCE PROVISIONS FOR THIS ITEM PER RDMQD00012P.
 - MAJOR CHARACTERISTICS NRS 101 TO 102. PARENTHEICAL FIGURES ARE FOR REFERENCE ONLY.
 - PACKAGING AND PACKING: THE FINISHED PART SHALL BE PRESERVED AND PACKAGED IN ACCORDANCE WITH MANUFACTURER'S BEST COMMERCIAL PRACTICE.
 - IDENTIFY PER MIL-STD-130 PARA 4.1.B, BY LABELING ITS CONTAINER WITH THE PART NUMBER. CHARACTERS MINIMUM TEXT HEIGHT 1.25 MM.



DETAIL B
SCALE 4 : 1



(WEIGHT APPROX.: 0.18 Kg)

UN CONTROLLED COPY
CERTIFIED CORRECT COPY
OF APPROVED DRAWINGS
AT THIS DATE: 30.11.2020

Design & Drawing Office
Ordnance Factory
Tiruchirappalli

3.2/ (1.6/ , 0.8/)

SEE ATTACHED MEDIA

UNLESS OTHERWISE SPECIFIED		SIGNATURE	DATE	ORDNANCE FACTORY TIRUCHIRAPPALLI	
DIMENSIONS ARE IN MM PER ASME Y14.5 - 2009		DRAWN	11/12	FOR: PISTON OUTER	
TOLERANCES		CHECKED		OF: 12.7MM SRCG	
LINEAR	ANGULAR	HOS/DDO	P. Jayam 29/120	TITLE BUSHING FORWARD	
SEE NOTE 5	SEE NOTE 5	OFFICER/PRODN		SIZE	CAGE CODE
1st ANGLE PROJECTION		OFFICER/QC		C	2291A
SURFACE TEXTURE IN MicroMeter		OFFICER/DDO		DWG NO	Y00852A-01
PROJECT OFFICER				SCALE	2:1
PLM Control				AUTOMATED DRAWING (SW)	SHEET 1 OF 1
				Y00852A-00 BUSHING_FORWARD	WIP

DWG NO
Y00852A-01

SH
1

A