

UN CONTROLLED COPY
 CERTIFIED CORRECT COPY OF APPROVED
 DRAWINGS AT THIS DATE: 30/11/22
 DESIGN & DRAWING OFFICE,
 ORDNANCE FACTORY, TIRUCHIRAPPALI - 600 016.

BUTT LONG SUB-ASSY. (POLYMER) - 27P 6620-01* (OR)
 (OR) BUTT NORMAL SUB-ASSY. (POLYMER) - 27P 6620-02* (OR)
 (OR) BUTT SHORT SUB-ASSY. (POLYMER) - 27P 6620-03*

BUTT LONG ASSY. (POLYMER) - 27P 6600-01*
 BUTT NORMAL ASSY. (POLYMER) - 27P 6600-02*
 BUTT SHORT ASSY. (POLYMER) - 27P 6600-03*

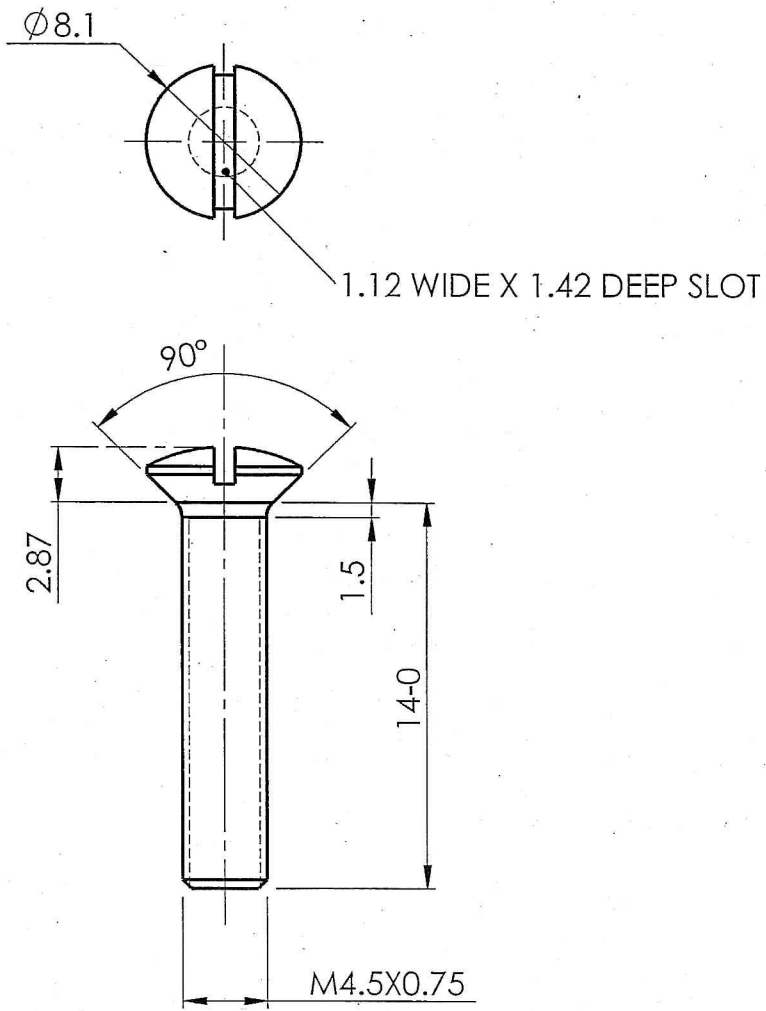
PLATE BRACKET SLING 1-OFF
 27P 6604
 LOOP SLING REAR 1-OFF
 27P 6605
 BRACKET SLING 1-OFF
 27P 6603

PLATE BUTT ASSY. (1-OFF)
 27P 6610
 SCREW - 2 OFF
 27P 6601
 SCREW - 2 OFF
 27P 6602

ALTERNATIVE NOTE:
 ALTERNATIVE TO "LOOP SLING REAR (No.1)+27P 6605;
 LOOP SLING REAR (27P 6606) TO BE USED WITH SLING ASSY.
 FOR EXPLANATION OF DETAILS WHEREVER NOT SPECIFIED,
 REFER D.D.NOTE SHEET No.3 (LATEST ISSUE)

Material:		SUB: BUTT ASSY. (POLYMER)	
3rd Angle	DWG Details	SIGN	DATE
DRAWN	CHECKED	HOS/d&DO	Div Officer
HOS/d&DO	Div Officer	QC	DDO
Finish:	Design Ref	DWG: 27P 6600-01, 27P 6600-02, *	No.: 27P 6600-03*
Alt. Material:	FOR:	PROJ.: 7.62 mm 1A1	
Hardness:			
DESIGN REF. DS.CAT.NO.1005-00/4057, 1005-00/4025, 1005-00/4059		Do not scale Drawing All Dimensions are in mm	
QPG -		WT. (Appx) gm	
ORDNANCE FACTORY TIRUCHIRAPPALI - 16.		SHEET: 1 OF 1	

DATE: 22-11-22
 SIGNATURE: [Signature]
 NAME: [Name]



UN CONTROLLED COPY
 CERTIFIED CORRECT COPY OF APPROVED
 DRAWINGS AT THIS DATE 3.11.22
 DESIGN & DRAWING OFFICE,
 ORDNANCE FACTORY, TIRUCHIRAPPALLI - 620 016.

FOR EXPLANATION OF DIMENSIONING ETC, SEE ARDE NOTE SHT.-1

NOTE:
 FOR SPECIFICATION LATEST ISSUE SHOULD BE FOLLOWED

Material: IS:513-2008 DESIGNATION CR2		DWG Details		SUB: SCREW	
		3rd Angle	SIGN	DATE	
Alt. Material:	DRAWN	<i>A. Rao</i>	17.3.22	FOR: BUTT ASSY. (POLYMER)	
	CHECKED	<i>[Signature]</i>		Do not scale Drawing	
Hardness	HOS/D&DO	<i>P. S. A</i>		PROJ.: 7.62 mm 1A1	
	Div. Officer Prodn			Design Ref 5305-005009	
Finish PHOSPHATE TO SPECN.JSS:0465-01: 1988 CLASS II (ACCELERATED), OIL FINISH	Div. Officer QC			DWG. No.: 27P 6601	A4
	Div. Officer DDO	<i>G. K. R</i>		QPG -	
				Wt. (Appx) gm	
				SHEET: 1 OF 1	



ORDNANCE FACTORY
 TIRUCHIRAPPALLI-16.

4 3 2 1

F

F

E

E

D

D

C

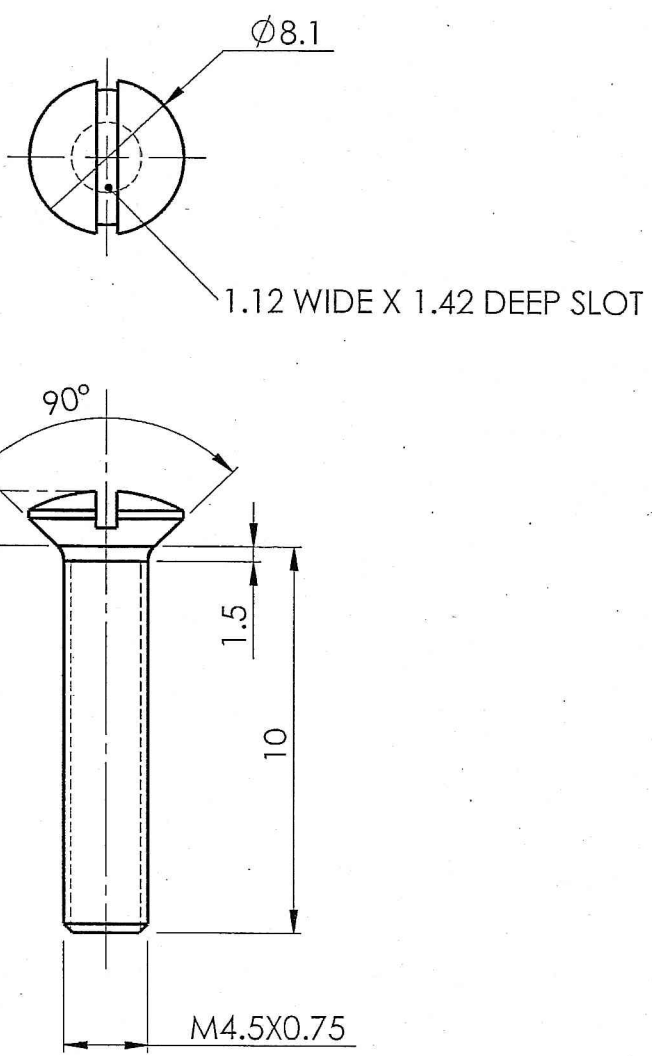
C

B

B

A

A



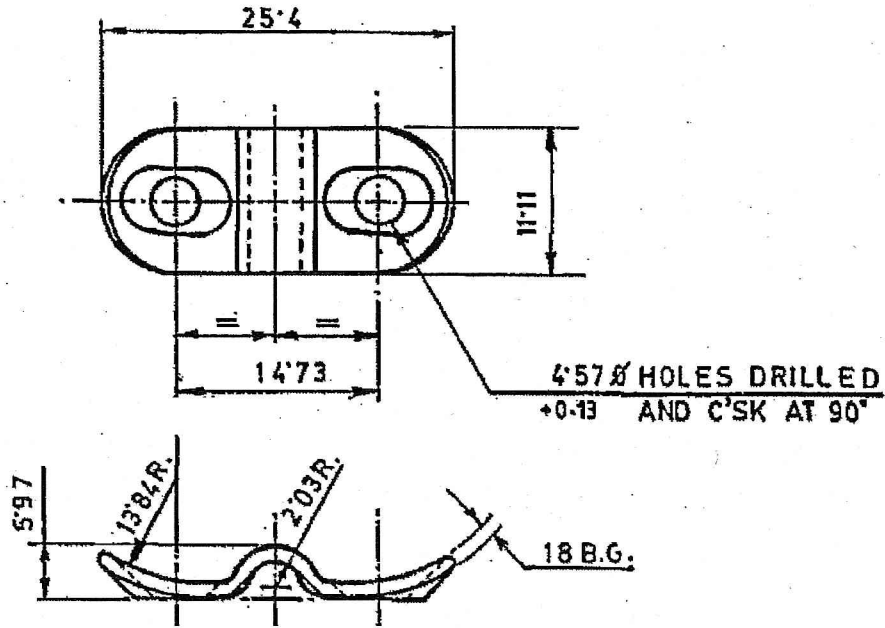
UN CONTROLLED COPY
 CERTIFIED CORRECT COPY OF APPROVED
 DRAWINGS AT THIS DATE. 21/02/22
 DESIGN & DRAWING OFFICE,
 ORDNANCE FACTORY, TIRUCHIRAPPALI - 620 016.

FOR EXPLANATION OF DIMENSIONING ETC, SEE ARDE NOTE SHT.-1

Material: IS:513-2008 DESIGNATION CR2		DWG Details		SUB: SCREW	
		3rd Angle	SIGN	DATE.	
Alt. Material:	DRAWN	<i>A. Jeth</i>	17-3-22	FOR: BUTT ASSY. (POLYMER)	
	CHECKED	<i>[Signature]</i>		Do not scale Drawing	
Hardness	HOS/D&DO	<i>[Signature]</i>		PROJ.: 7.62 mm 1A1	
	Div. Officer Prodn			Design Ref 5305-005010	
Finish RHOSPATE TO SPECN. JSS:0465-01: 1988 CLASS II (ACCELERATED), OIL FINISH	Div. Officer QC			DWG. No.: 27P 6602	A4
	Div. Officer DDO	<i>[Signature]</i>		QPG -	
				ORDNANCE FACTORY TIRUCHIRAPPALI-16.	
				Wt. (Appx) gm SHEET: 1 OF 1	

4 3 2 1

FOR EXPLANATION OF DETAILS WHEREVER NOT SPECIFIED,
REFER D.D.NOTE SHEET No.3 (LATEST ISSUE)

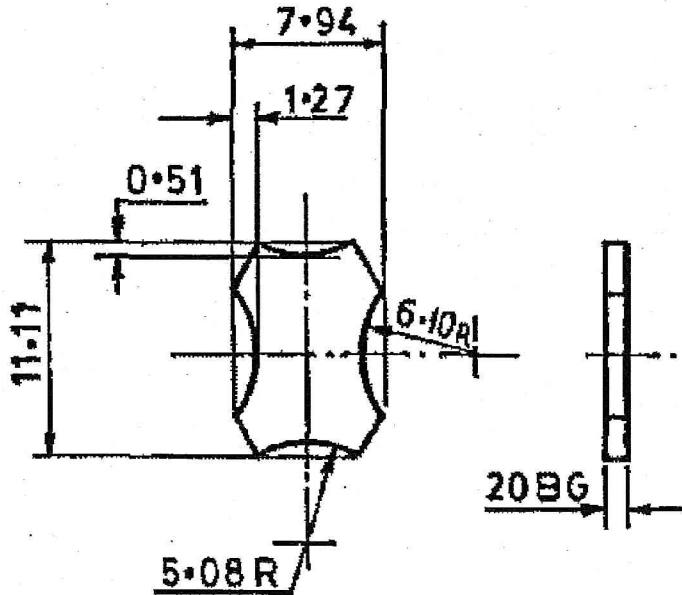


UN CONTROLLED COPY
CERTIFIED CORRECT COPY OF APPROVED
DRAWINGS AT THIS DATE. 31/03/22
DESIGN & DRAWING OFFICE,
ORDNANCE FACTORY, TIRUCHIRAPPALI - 620 016.

Material: IS:513-2008 DESIGNATION CR2 CONDITION ANNEALED		DWG Details		SUB: BRACKET SLING	
	3rd Angle	SIGN	DATE.		
Alt. Material:	DRAWN	<i>A. Ash</i>	17.3.22	FOR: BUTT ASSY.(POLYMER)	Do not scale Drawing
	CHECKED	<i>[Signature]</i>		PROJ.: 7.62 mm 1A1	
Hardness:	HOS/D&DO	<i>[Signature]</i>		Design Ref 5340-015297 (ICR 1212)	All Dimensions are in mm
	Div.Officer Prodn			DWG. No.: 27P 6603	A4 QPG -
Finish: PHOSPHATE TO SPECN.JSS:0465-01: 1994 CLASS I SPIRIT STAIN BLACK OIL FINISH	Div.Officer QC			ORDNANCE FACTORY TIRUCHIRAPPALI-16.	Wt. (Appx) gm
	Div.Officer DDO	<i>[Signature]</i>			

FOR EXPLANATION OF DETAILS WHEREVER NOT SPECIFIED,
REFER D.D.NOTE SHEET No.3 (LATEST ISSUE)

NOTE:
WHERE TOLERANCES ARE NOT SHOWN,
DIMENSIONS IN WHOLE NUMBER ± 1.27 mm
DIMENSIONS IN ONE DECIMAL PLACES ± 0.4 mm
DIMENSIONS IN TWO DECIMAL PLACES ± 0.13 mm

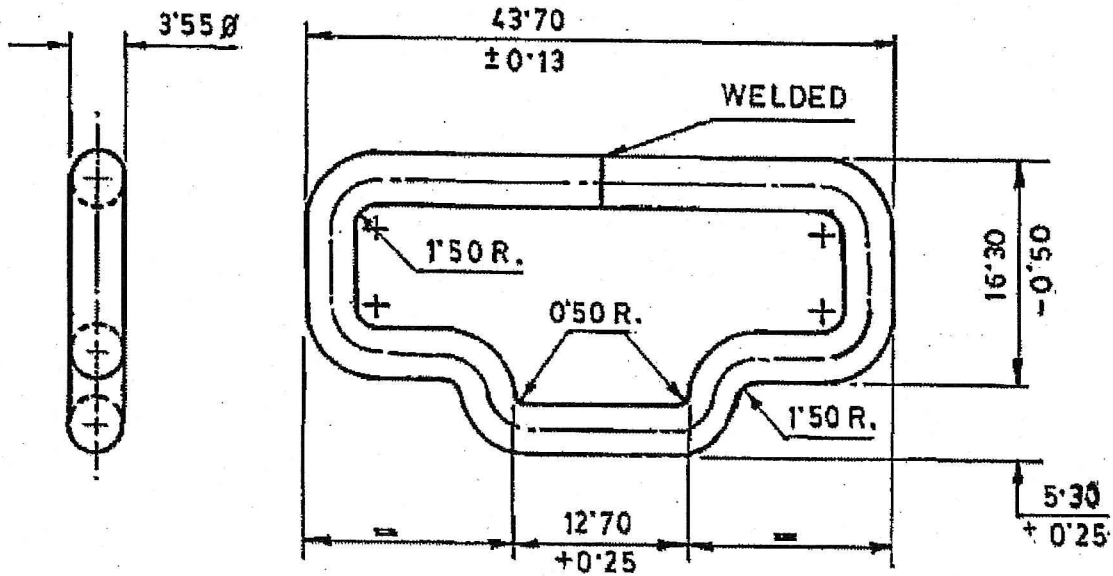


UN CONTROLLED COPY
CERTIFIED CORRECT COPY OF APPROVED
DRAWINGS AT THIS DATE: 31/03/22
DESIGN & DRAWING OFFICE,
ORDNANCE FACTORY, TIRUCHIRAPPALLI - 620 016.

Material: IS:513-2008 DESIGNATION CR3		DWG Details		SUB: PLATE BRACKET SLING	
		3rd Angle	SIGN	DATE.	
Alt. Material:	DRAWN	A. K.	11-3-22	FOR: BUTT ASSY.(POLYMER)	Do not scale Drawing
	CHECKED			PROJ.: 7.62 mm 1A1	
Hardness:	HOS/D&DO	P. K.		Design Ref 1005-001664 (ICR 1224)	All Dimensions are in mm
	Div. Officer Prodn			DWG. No.: 27P 6604	A4 QPG -
Finish PHOSPHATE TO SPECN.JSS:0465-01: 1994 CLASS I SPIRIT STAIN BLACK OIL FINISH	Div. Officer QC				ORDNANCE FACTORY TIRUCHIRAPPALLI-16.
	Div. Officer DDO	C. K.			
					SHEET: 1 OF 1

FOR EXPLANATION OF DETAILS WHEREVER NOT SPECIFIED,
REFER D.D.NOTE SHEET No.3 (LATEST ISSUE)

ALTERNATIVE :
LOOP SLING REAR (27P 6606)
TO BE USED WITH SLING ASSEMBLY.



UN CONTROLLED COPY
CERTIFIED CORRECT COPY OF APPROVED
DRAWINGS AT THIS DATE... 31/03/22
DESIGN & DRAWING OFFICE,
ORDNANCE FACTORY, TIRUCHIRAPPALI - 620 016.

FINISH: PHOSPHATE TO SPECN.JSS:0465-01:1988 CLASS I
PAINT RFU STOVING BLACK TO SPECN.JSS-8010-37

Material: IS:280-2006, 1/4 HARD		DWG Details		SUB: LOOP SLING REAR (NO.1)	
Alt. Material:	DRAWN	SIGN	DATE.	FOR: BUTT ASSEMBLY (POLYMER)	
Hardness	CHECKED	<i>A. Dab</i>	17.3.22	Do not scale Drawing	
	HOS/D&DO	<i>P. Farin</i>		All Dimensions are in mm	
Finish	Div. Officer Prodn			PROJ.: 7.62 mm 1A1	
	Div. Officer QC			Design Ref 5340-016097 (ICR 1237)	
	Div. Officer DDO	<i>R. K</i>		DWG. No.: 27P 6605	A4 QPG -
				ORDNANCE FACTORY TIRUCHIRAPPALI-16.	Wt. (Appx) gm
					SHEET: 1 OF 1

BUTT LONG (POLYMER) - 27P 6625-01*
 OR BUTT NORMAL (POLYMER) - 27P 6625-02*
 OR BUTT SHORT (POLYMER) - 27P 6625-03*

TIE-PLATE
 FOR LONG BUTT (27P 6622)
 FOR NORMAL BUTT (27P 6623)

SLOTTED C'SK HD.SCREW
 M4X22 LONG(COARSE)
 STD.

TIE-PLATE
 FOR SHORT BUTT
 27P 6624

SCREW
 27P 6601

TUBE OIL BOTTLE
 27P 6621

BUTT LONG SUB-ASSY. (POLYMER) - 27P 6620-01*
 BUTT NORMAL SUB-ASSY. (POLYMER) - 27P 6620-02*
 BUTT SHORT SUB-ASSY. (POLYMER) - 27P 6620-03*

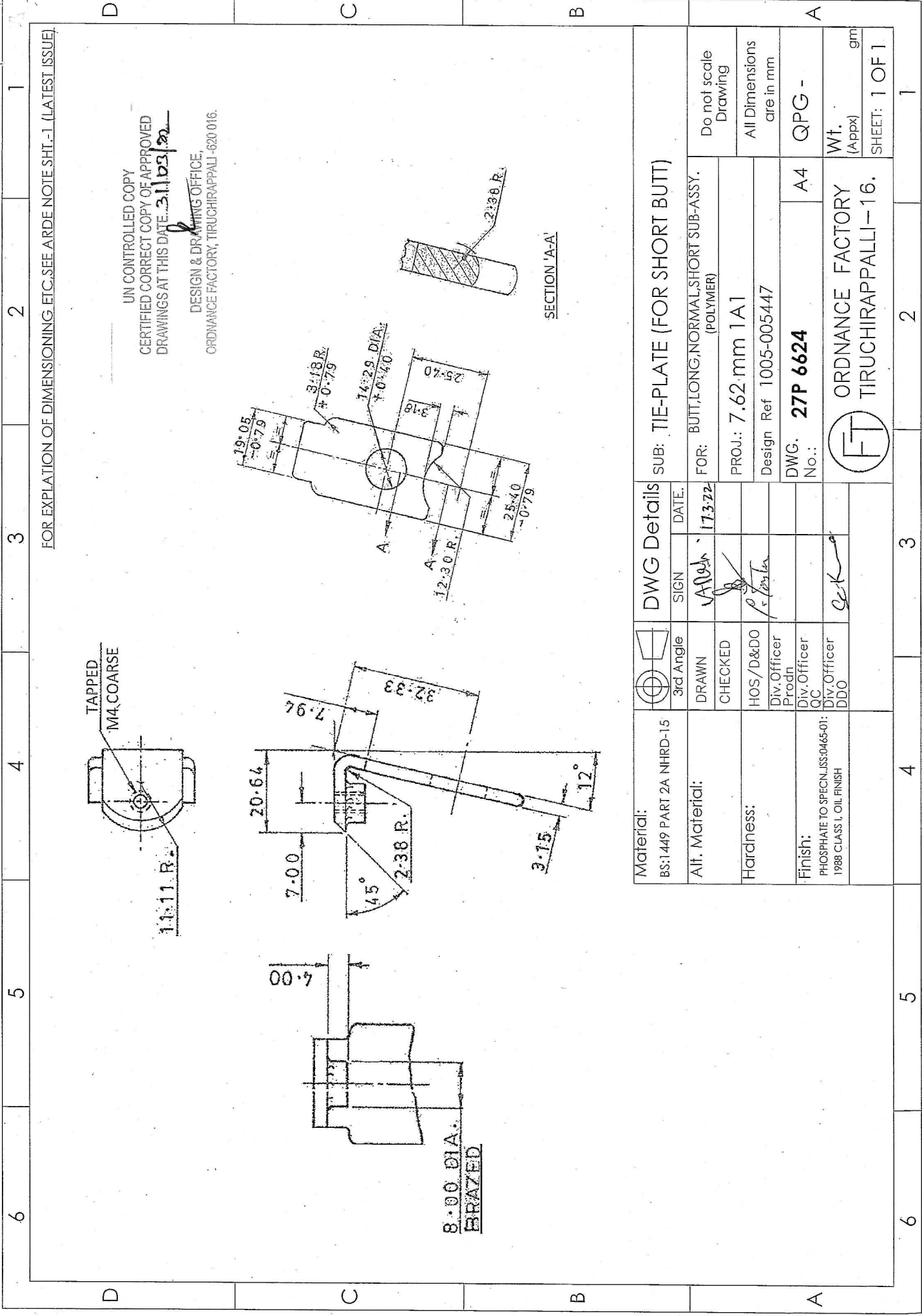
PART ASSEMBLY VIEW SHOWING
 POSITION OF TIE PLATE FOR SHORT
 BUTT

UN CONTROLLED COPY
 CERTIFIED CORRECT COPY OF APPROVED
 DRAWINGS AT THIS DATE. 30/11/22
 DESIGN & DRAWING OFFICE,
 ORDNANCE FACTORY, TIRUCHIRAPPALLI-620 016.

DESIGN REF.
 DS.CAT.NO.1005-005449,
 1005-005450,1005-005451.

Material:	DWG Details	SUB: BUTT LONG, NORMAL, SHORT SUB- ASSY (POLYMER)	
	3rd Angle	SIGN	DATE: 17/2/22
Alt. Material:	DRAWN	FOR: BUTT ASSY. (POLYMER)	
Hardness	CHECKED	PROU.: 7.62 mm 1A1	
Finish	HOS/D&DO	Design Ref	
	Div. Officer	DWG. 27P 6620-01, 27P 6620-02, *	
	Prog. Officer	No.: 27P 6620-03*	
	Div. Officer	A3	
	D.D.O	QPG -	
		Wt. (Appx) gm	
		SHEET: 1 OF 1	

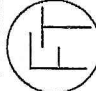
AMENDMENT	DATE: 22-11-22	APPD.
		SIGN
		PART



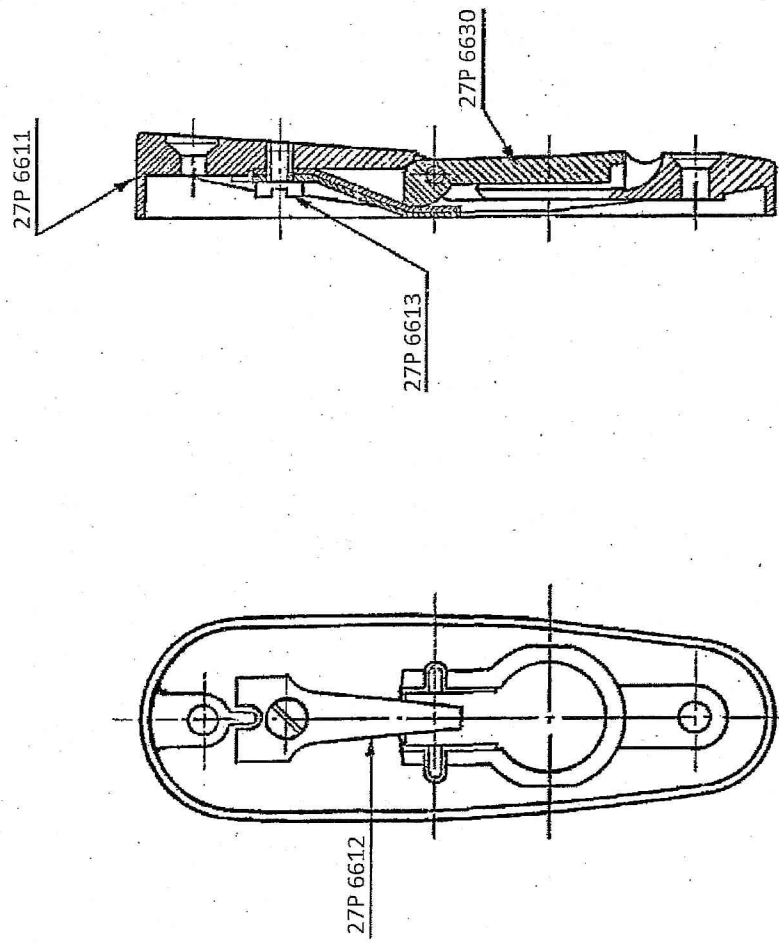
UN CONTROLLED COPY
 CERTIFIED CORRECT COPY OF APPROVED
 DRAWINGS AT THIS DATE 31.03.22
 DESIGN & DRAWING OFFICE,
 ORDNANCE FACTORY, TIRUCHIRAPPALLI-620 016.

FOR EXPLANATION OF DIMENSIONING ETC. SEE ARDE NOTE SHT.-1 (LATEST ISSUE)

DWG Details		SIGN		DATE	
Material:	BS:1449 PART 2A NHRD-15	3rd Angle			
Alt. Material:		DRAWN	<i>AN</i>	17.3.22	
Hardness:		CHECKED	<i>[Signature]</i>		
Finish:	PHOSPHATE TO SPECN. ISS. 0465-01: 1988 CLASS I, OIL FINISH	HOS/D&DO	<i>[Signature]</i>		
		Div. Officer Prodn			
		Div. Officer QC			
		Div. Officer DDO	<i>[Signature]</i>		

SUB: TIE-PLATE (FOR SHORT BUTT)		Do not scale Drawing
FOR: BUTT, LONG, NORMAL, SHORT SUB-ASSY. (POLYMER)		All Dimensions are in mm
PROJ.: 7.62 mm 1A1		QPG -
Design Ref 1005-005447		Wt. (Appx) gm
DWG. 27P 6624	A4	SHEET: 1 OF 1
 ORDNANCE FACTORY TIRUCHIRAPPALLI-16.		

FOR EXPLANATION OF DIMENSIONING ETC. SEE ARDE NOTE SHIT.-1. (LATEST IS...)



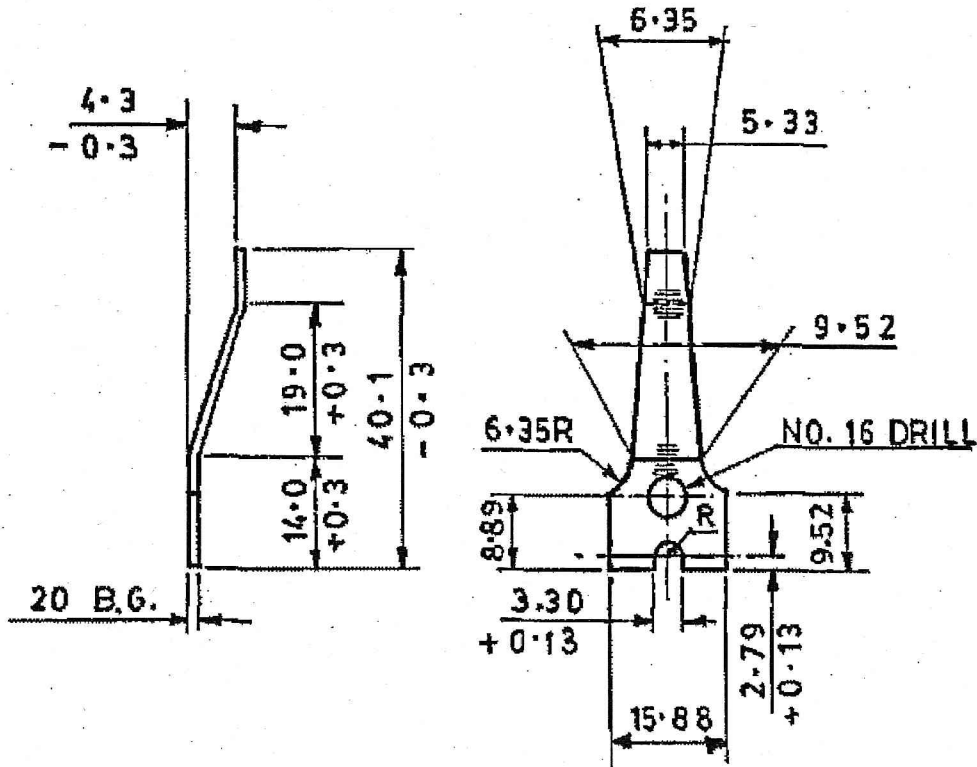
UN CONTROLLED COPY
 CERTIFIED CORRECT COPY OF APPROVED
 DRAWINGS AT THIS DATE: 31/03/2022
 DESIGN & DRAWING OFFICE,
 ORDNANCE FACTORY, TIRUCHIRAPPALLI-620 016.

Material:	DWG Details		SIGN	DATE
	3rd Angle	DATE		
Alt. Material:	DRAWN	17-3-22	A. Uth.	
Hardness	CHECKED			
Finish	HOS/D&DO			
	Div. Officer			
	GC			
	DDO			

SUB: PLATE, BUTT ASSEMBLY	Do not scale Drawing
FOR: BUTT ASSEMBLY (POLYMER)	All Dimensions are in mm
PROJ.: 7.62 mm 1A1	DWG. No.: 27P 6610
Design Ref 1005-001665 (ICR 66A)	A3
WT. (Appx) gm	SHEET: 1 OF 1

ORDNANCE FACTORY
 TIRUCHIRAPPALLI-16.

FOR EXPLANATION OF DIMENSIONING ETC,SEE ARDE NOTE SHT.-1 (LATEST ISSUE)



UN CONTROLLED COPY
 CERTIFIED CORRECT COPY OF APPROVED
 DRAWINGS AT THIS DATE. 3.1.03.22
 DESIGN & DRAWING OFFICE,
 ORDNANCE FACTORY, TIRUCHIRAPPALI-620 016.

HARDENED & TEMPERED TO H.V. OF 425 TO 500

Material: IS:2507:1975 GR.3 DESIGNATION 70C6	3rd Angle		DWG Details		SUB: SPRING TRAP	
	DRAWN	SIGN	DATE	FOR: PLATE,BUTT ASSEMBLY	Do not scale Drawing	
Alt. Material:	CHECKED			PROJ.: 7.62 mm 1A1		
Hardness:	HOS/D&DO			Design Ref 1005-001668 (ICR 1260)	QPG -	
Finish: PHOSPHATE TO SPECN.JSS:0465-01: 1988 CLASS I,OIL FINISH	Div.Officer Prdn			DWG. No.: 27P 6612		
	Div.Officer DDO			ORDNANCE FACTORY TIRUCHIRAPPALI-16.		



4 3 2 1

F F

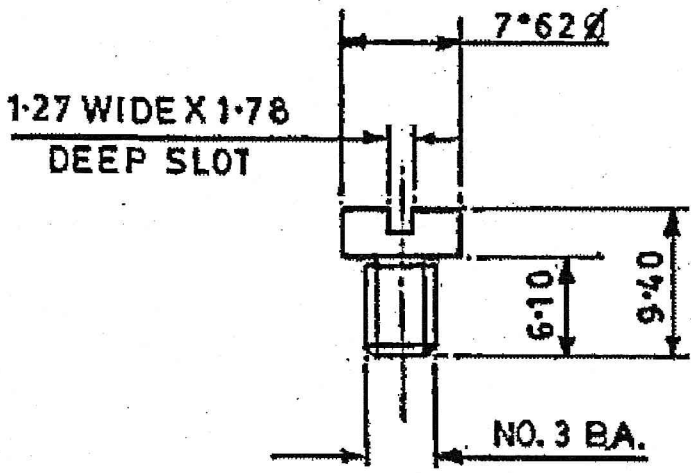
E E

D D

C C

B B

A A



UN CONTROLLED COPY
 CERTIFIED CORRECT COPY OF APPROVED
 DRAWINGS AT THIS DATE. 21/03/22
 DESIGN & DRAWING OFFICE,
 ORDNANCE FACTORY, TIRUCHIRAPPALI-620 016.

NOTE:
 FOR SPECIFICATION LATEST ISSUE SHOULD BE FOLLOWED

Material: IS:5517-1993 DESIGNATION 40C8		DWG Details		SUB: SCREW SPRING TRAP	
Alt. Material:	DRAWN	SIGN	DATE	FOR: PLATE,BUTT ASSEMBLY	Do not scale Drawing
Hardness:	CHECKED		17-3-22	PROJ.: 7.62 mm 1A1	
Finish PHOSPHATE TO SPECN. JSS:0465-01:1988 CLASS 1,OIL FINISH	HOS/D&DO			Design Ref 5305-005003 (ICR 1523)	All Dimensions are in mm
Un tollerated dimensions IS:2102 Medium	Div.Officer Prodn			DWG. No.: 27P 6613	A4 QPG -
	Div.Officer QC			ORDNANCE FACTORY TIRUCHIRAPPALLI-16.	Wt. (Appx) gm
	Div.Officer DDO				SHEET: 1 OF 1

4 3 2 1

4

3

2

1

F

F

E

E

D

D

C

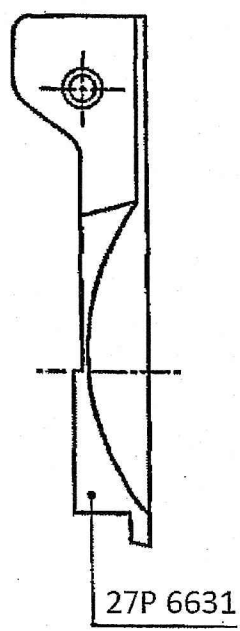
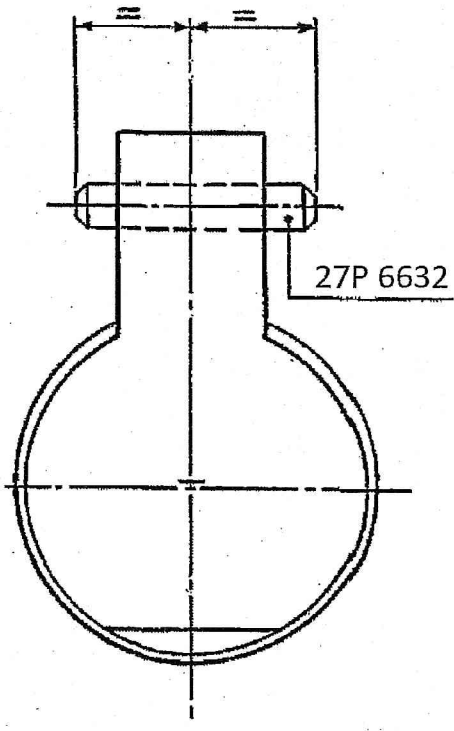
C

B

B

A

A



UN CONTROLLED COPY
 CERTIFIED CORRECT COPY OF APPROVED
 DRAWINGS AT THIS DATE. 31/03/22
 DESIGN & DRAWING OFFICE,
 ORDNANCE FACTORY, TIRUCHIRAPPALLI - 620 016.

AS AN ALTERNATE METHOD OF MANUFACTURE PIN TRAP 27P 6632 & TRAP 27P 6631 MAY BE DIE-CAST TOGETHER AS INTEGRAL

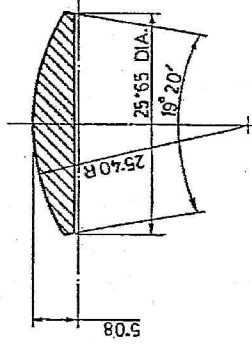
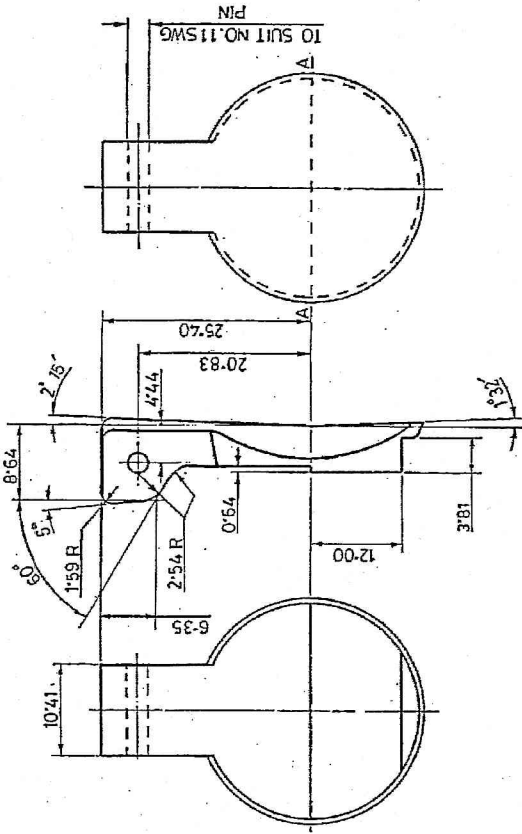
Material:		DWG Details		SUB: TRAP BUTT PLATE	
	3rd Angle	SIGN	DATE		
Alt. Material:	DRAWN	<i>A. Nish</i>	17-3-22	FOR: PLATE, BUTT ASSEMBLY	Do not scale Drawing
	CHECKED	<i>[Signature]</i>		PROJ.: 7.62 mm 1A1	
Hardness	HOS/D&DO	<i>P. J. [Signature]</i>		Design Ref 1005-001669 (ICR 74 SA)	All Dimensions are in mm
	Div. Officer Prodn			DWG. No.: 27P 6630	
Finish	Div. Officer QC			A4	QPG -
	Div. Officer DDO	<i>C. K. [Signature]</i>			
					ORDNANCE FACTORY TIRUCHIRAPPALLI-16.
					Wt. (Appx) gm
					SHEET: 1 OF 1

4

3

2

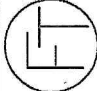
1



SECTION - A-A

UN CONTROLLED COPY
 CERTIFIED CORRECT COPY OF APPROVED
 DRAWINGS AT THIS DATE... 31/03/22
 DESIGN & DRAWING OFFICE,
 ORDNANCE FACTORY, TIRUCHIRAPPALLI-620 016.

FOR EXPLANATION OF DETAILS WHEREVER NOT SPECIFIED,
 REFER D.D.NOTE SHEET No.3 (LATEST ISSUE)

Material: IS:617-1994 DESIGNATION 4223 OR 4600 OR 4635	3rd Angle DRAWN CHECKED	SIGN <i>Arub</i>	DATE: 17-3-22	SUB: TRAP		Do not scale Drawing
				FOR: TRAP BUTT PLATE		
Alt. Material:	HOS/D&DO	Div. Officer Prodn	Div. Officer QC	Div. Officer DDO	PROJ.: 7.62 mm 1A1	QPG -
Hardness:	Div. Officer GC	Div. Officer DDO	Design Ref: 1005-001671 (ICR 1336)	DWG. No.: 27P 6631	A4	
Finish:	 ORDNANCE FACTORY TIRUCHIRAPPALLI-16.					

4

3

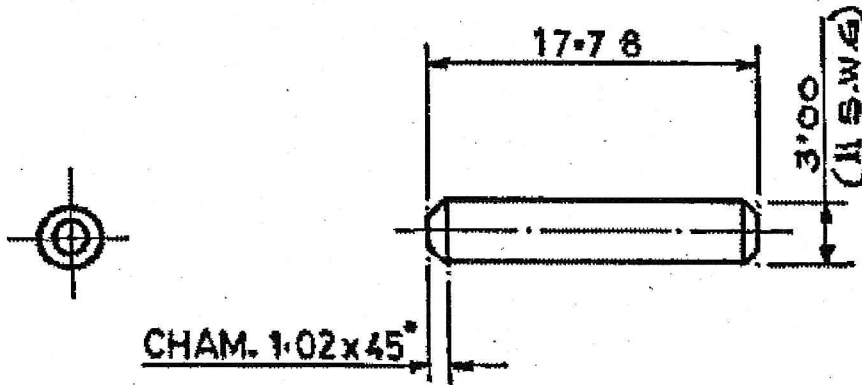
2

1

FOR EXPLANATION OF DETAILS WHEREVER NOT SPECIFIED,
REFER D.D.NOTE SHEET No.3 (LATEST ISSUE)

NOTE:

FOR SPECIFICATION LATEST ISSUE SHOULD BE FOLLOWED



UN CONTROLLED COPY
CERTIFIED CORRECT COPY OF APPROVED
DRAWINGS AT THIS DATE. 31/03/22

DESIGN & DRAWING OFFICE,
ORDNANCE FACTORY, TIRUCHIRAPPALI - 620 016.

MATERIAL :

IS:7887-1992 GRADE 8M OR 9

FINISH:

PHOSPHATE TO SPECN.JSS:0465-01:1988
CLASS I OIL FINISH (or) ALTERNATIVELY ZINC
PLATING TO SPECN. IS:1573 Gr.'C' TYPE-2

Material:		DWG Details		SUB: PIN TRAP	
	3rd Angle	SIGN	DATE.		
Alt. Material:	DRAWN	<i>Alsh</i>	17-3-22	FOR: TRAP BUTT PLATE	Do not scale Drawing
	CHECKED	<i>Sh</i>		PROJ.: 7.62 mm 1A1	
Hardness	HOS/D&DO	<i>P.T.H.</i>		Design Ref 5315-001774 (ICR 1335)	All Dimensions are in mm
	Div. Officer Prodn			DWG. No.: 27P 6632	A4 QPG -
Finish	Div. Officer QC			ORDNANCE FACTORY TIRUCHIRAPPALI-16.	Wt. (Appx) gm
	Div. Officer DDO	<i>Se. K</i>			SHEET: 1 OF 1

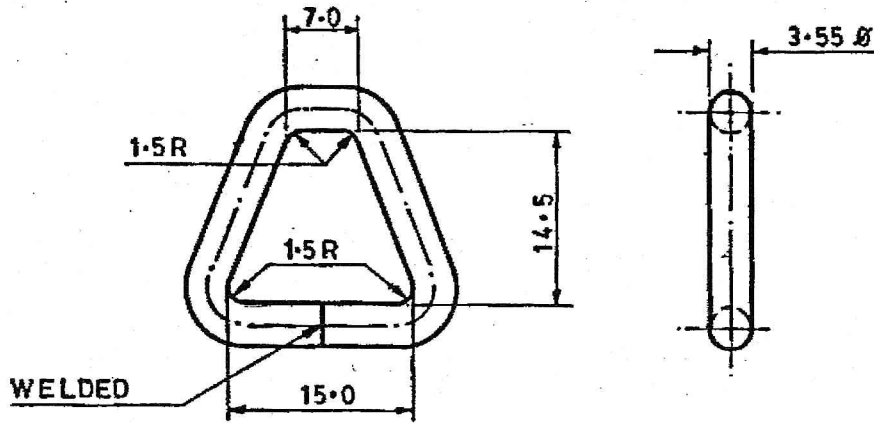
4

3

2

1

MARKING (SUITABLY) ON SAMPLE/TAG
 YEAR OF MFG.
 MANUFACTURER'S CODE
 DRAWING NO.
 GEN.TOL.'COARSE' IS:2102



UN CONTROLLED COPY
 CERTIFIED CORRECT COPY OF APPROVED
 DRAWINGS AT THIS DATE. 31/03/22
 DESIGN & DRAWING OFFICE,
 ORDNANCE FACTORY, TIRUCHIRAPPALLI-620 016.

Material: IS:280-2006, CONDITION 1/4 HARD		DWG Details		SUB: LOOP, SLING REAR	
		3rd Angle	SIGN	DATE.	
Alt. Material:	DRAWN	A. [Signature]	17-3-22	FOR: BUTT ASSY. (POLYMER)	
	CHECKED	[Signature]		Do not scale Drawing	
Hardness:	HOS/D&DO	[Signature]		PROJ.: 7.62 mm 1A1	
	Div. Officer Prodn			Design Ref 5340-015579 (R 6402)	
Finish PHOSPHATE TO SPECN. ISS:0465-01: 1988 CLASS II (ACCELERATED), OIL FINISH	Div. Officer QC			DWG. No.: 27P 6606	A4
	Div. Officer DDO	[Signature]		QPG -	
				Wt. (Appx) gm	
				SHEET: 1 OF 1	



ORDNANCE FACTORY
 TIRUCHIRAPPALLI-16.