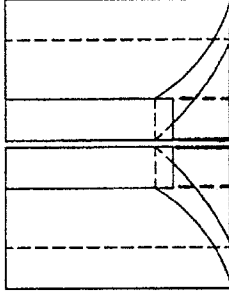
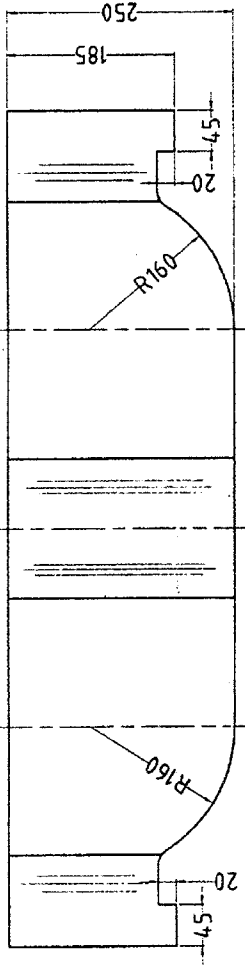
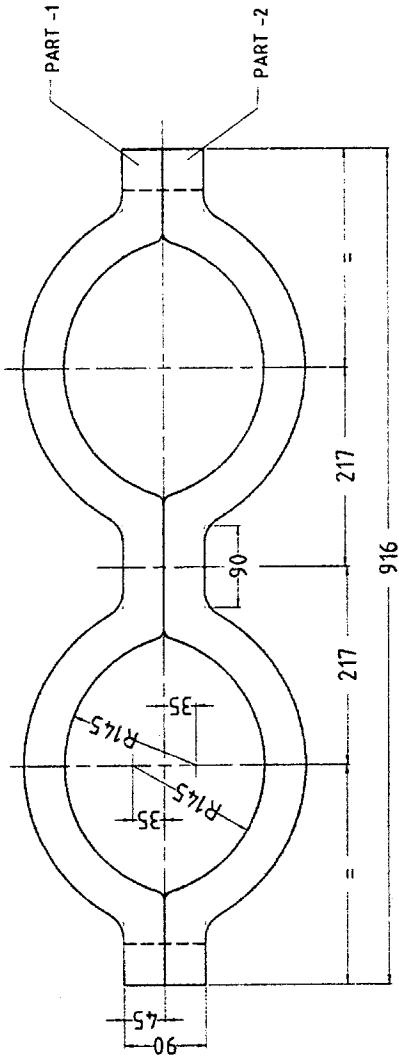


ALL DIMENSIONS ARE IN mm



Drng. prepared vide ref JWM/MET memo no. 02/R&D/GHT, dated 21/08/2015



**UN CONTROLLED**

Chemical Composition :  
 NICHROME STEEL - IOF 32.7  
 C : 0.15-0.25%  
 Si : 1.5-1.8%  
 Mn : 1.0-2.0%  
 Ni : 50-60%  
 Cr : 10-15%  
 S & P : 0.035 max.

\*\* SUPPLY CONDITION : ANNEALED MATERIAL SHOULD BE FREE FROM DEFECTS (I.E. PIPING BLOW HOLES, CAVITY ... ETC.)

*JWM/MET*  
 JWM/MET

ITEM NO	DESCRIPTION	MATERIAL	NO. OFF	REMARK
AMENDMENTS				
	DESCRIPTION			
	INDEX			
	SCALE	DRAWN	DATE	NAME
	A4	TRACED	21-08-15	Sajal Perumal
	1:8	CHECKED		
				APPROVED
				DGM/OA
				DGM/OA

**CLAMP FOR T-72 BARREL  
 & LFG AT GHT**

(BASED ON SAMPLE DRG.)

METAL & STEEL FACTORY, ISHAPORE

DRG. NO. **HT - 169**

DESIGNED BY KARTICK PERUMAL, JWM/MET