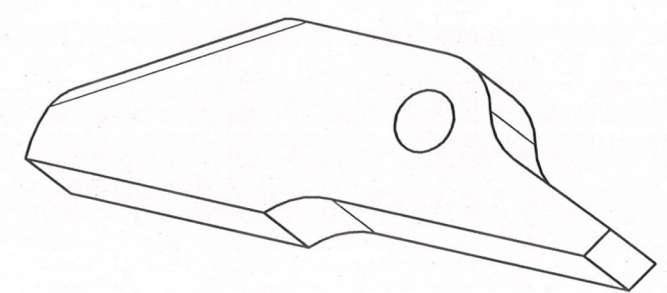
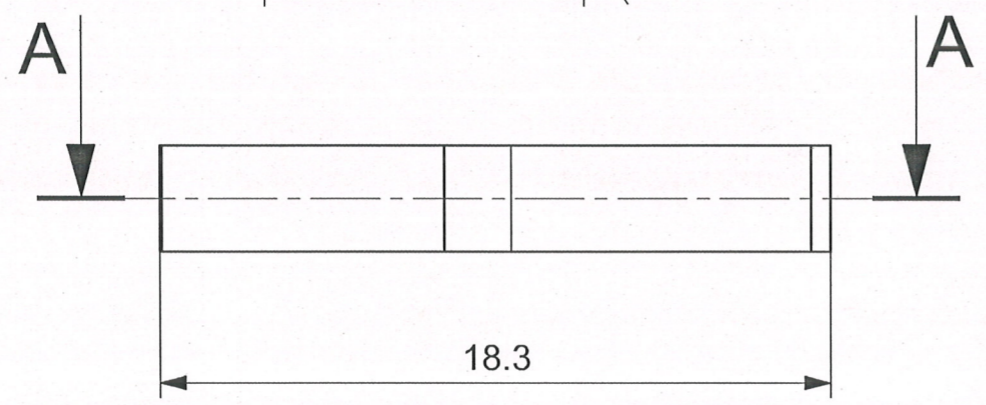
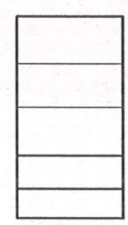
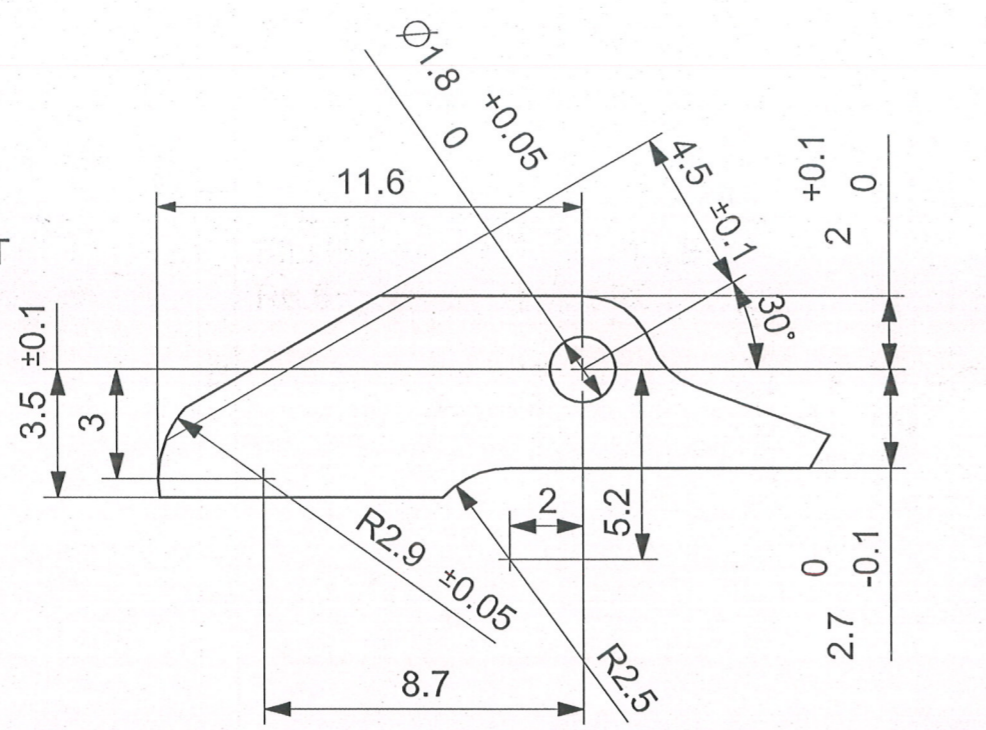
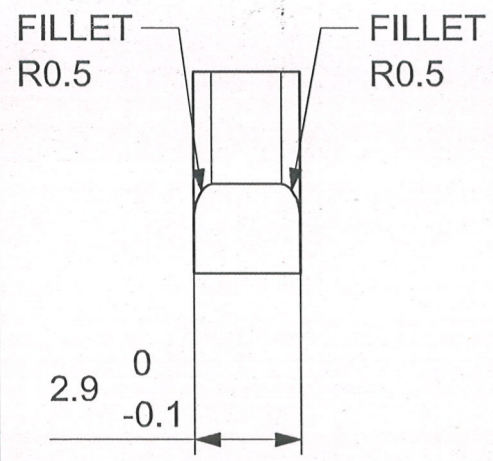
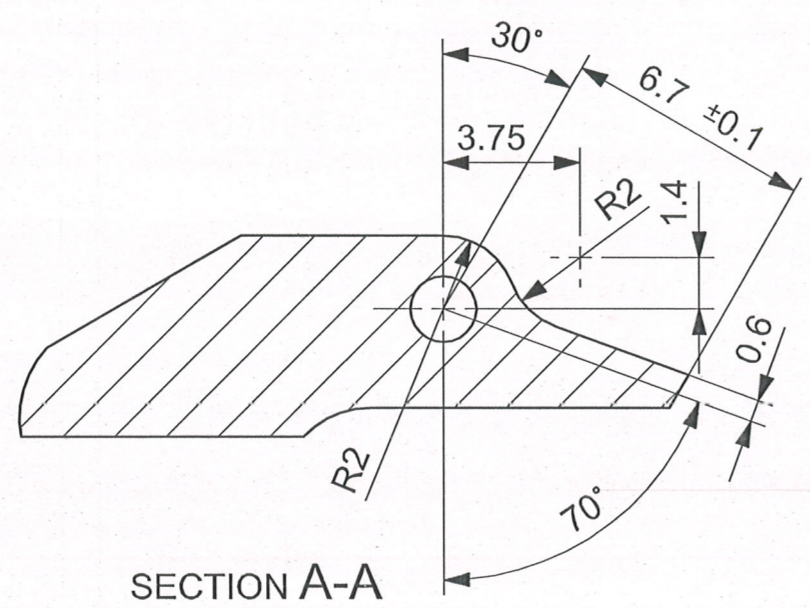


D. A. NO.



ISOMETRIC VIEW



SECTION A-A

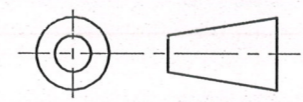
MATERIAL:-STEEL BS970 Pt.1:1983 Gd.655M13 OR En-36

HEAT TREATMENT:- HARDENED & TEMPERED TO 600 - 650 H.V.
WITH CASE DEPTH 0.13 TO 0.26 mm.

PROTECTIVE FINISH:- PHOSPHATED TO SPECN.
J.S.S.-0465-01:1988 CLASS II
(ACCELERATED) OIL FINISH.

REVOLVER.32 (7.65 mm) SIDE SWING HAMMER DOG	DESIGNED BY	<i>A.S.RANA</i> A.S.RANA
	CHECKED BY	<i>JWM/DDO</i> JWM/DDO
	APPROVED BY	<i>WM/DDO</i> WM/DDO
	DATE	20.06.2019

SCALE 5 : 1



SMALL ARMS FACTORY
KANPUR

DRAWING NO.	RV-05/2 SW
SHEET	1 OF 1

DIMENSIONS ARE IN MM.

A3