

2

DWG NO Y19378A-00

SH 1

1

SHEET REV RECORD

ALL SHEETS ARE THE SAME REVISION

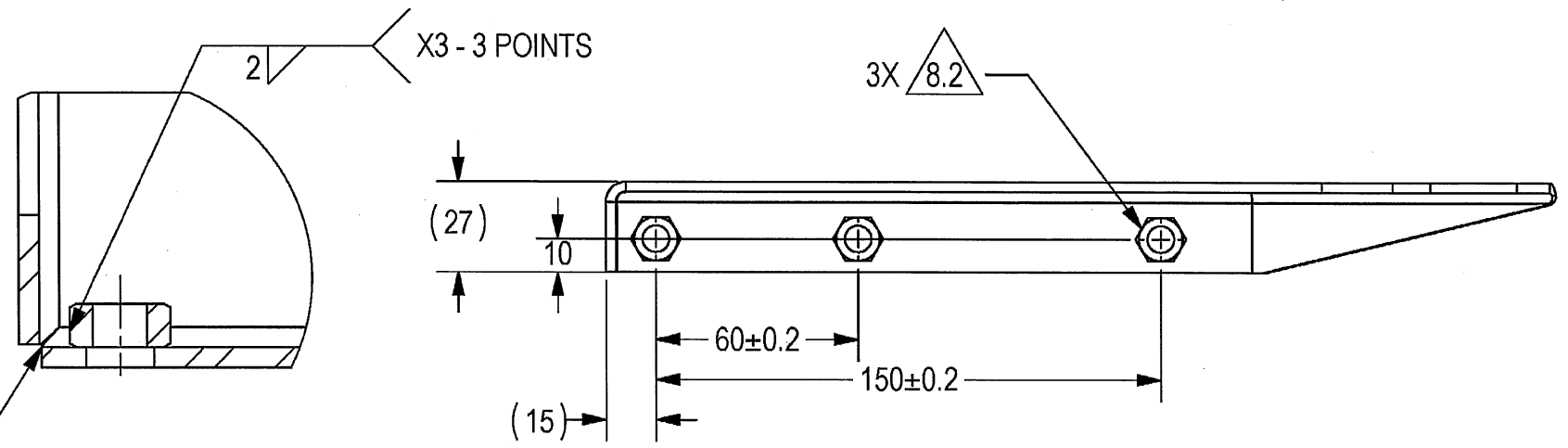
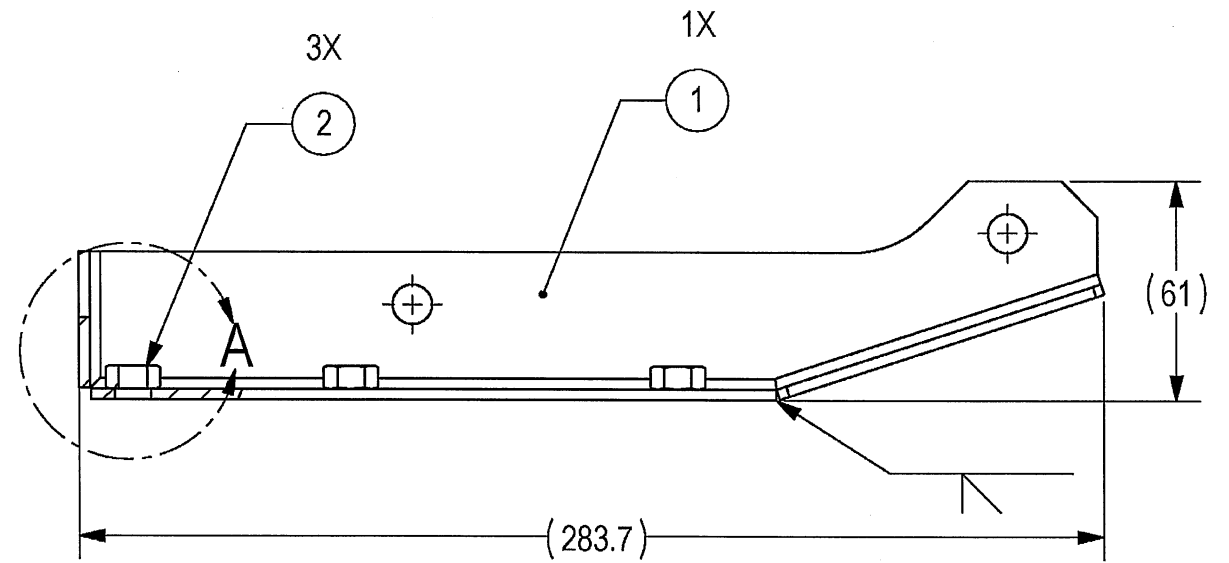
REVISION RECORD

REV	ECO	DESCRIPTION	DATE	APVD
01		Freeze	02-Nov-17	Y. Shapira
--	T00119	Identical To Previous Released	20-Sep-18	L. Goldshtein

THIS DOCUMENT AND THE INFORMATION CONTAINED IN IT ARE PROPRIETARY AND CONFIDENTIAL TO OFT. NO PERSON OR ENTITY IS ALLOWED TO COPY, REPRINT, REPRODUCE OR PUBLISH ANY PART OF THIS DOCUMENT, NOR DISCLOSE ITS CONTENTS TO OTHERS, NOR MAKE ANY USE OF IT, NOR ALLOW OR ASSIST OTHERS TO MAKE ANY USE OF IT UNLESS BY THE PRIOR WRITTEN EXPRESS AUTHORIZATION OF OFT AND THEN ONLY TO THE EXTENT AUTHORIZED. COPYRIGHT-OFT.

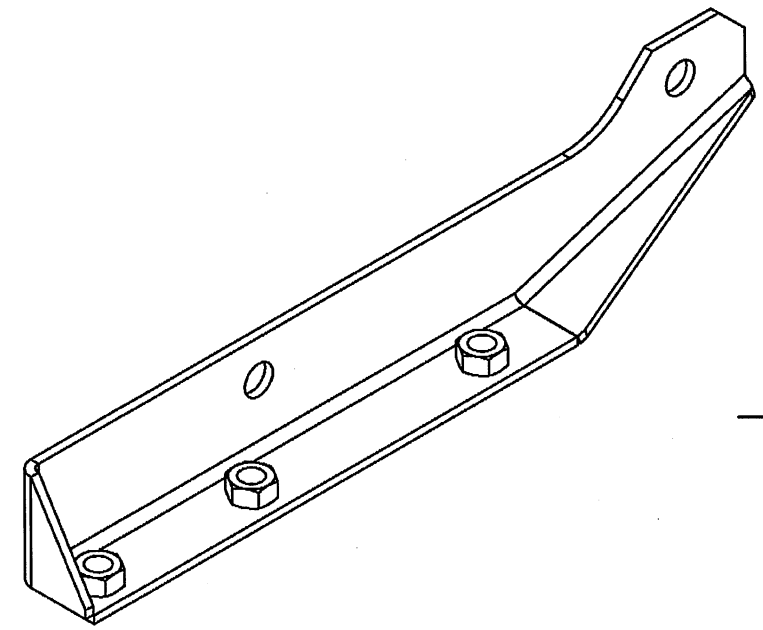
NOTES:

- INTERPRET THIS DRAWING IAW ASME Y14.100M.
- MATERIAL: CRES TYPE 316L (ACC PART LIST).
- GENERAL TOLERANCE ACCORDING ISO 2768c.
- GTAW OR GMAW WELDING PER AWS D1.1 USING ELECTRODE ER 308L PER AWS A5.9.
- REMOVE ALL WELDING RESIDUALS.
- POST WELD INSPECTION: VISUAL WELD INSPECTION.
- DEBURR AND REMOVE SHARP EDGES, APPROX. 0.5X45 Deg.
- FINISH:
 - 1 DRY FILM LUBRICATION IN A FLUOROPOLYMER ORGANIC RESIN SOLVENT COLOR BLACK CLASS 2 TYPE 1, 30-40 MICRON THICK PER VS-1-3-1-165 (OR EQUIVALENT).
 - 2 THREADS MUST BE PROTECTED FROM FINISH.
- QUALITY ASSURANCE PROVISIONS:
 - 1 QUALITY ASSURANCE PROVISIONS FOR THIS ITEM PER RDMQD00012P.
- PARENTHEICAL FIGURES ARE FOR REFERENCE ONLY.
- PACKAGING AND PACKING: THE FINISHED PART SHALL BE PRESERVED AND PACKAGED IN ACCORDANCE WITH MANUFACTURER'S COMMERCIAL PRACTICE.
- IDENTIFY PART PER MIL-STD-130 PARA 4.1.B BY LABELING ITS CONTAINER WITH THE PART NUMBER. CHARACTERS 1.25 MM HIGH.



DETAIL A SCALE 1:1

SEE SEPARATE PARTS LIST



(WEIGHT 0.4 KG)

UNLESS OTHERWISE SPECIFIED		SIGNATURE	DATE	ORDNANCE FACTORY TIRUCHIRAPPALLI	
DIMENSIONS ARE IN MM PER ASME Y14.5 - 2009		DRAWN	17/2/20		
TOLERANCES		CHECKED		TITLE	
LINEAR	ANGULAR	HOS/DDO	18/02	FOR: MECH. STRUCTURE ASSY	
1st ANGLE PROJECTION		OFFICER/PRODN		BRACKET, BASKET, RIGHT, WELD OF: 12.7MM SRCG	
SURFACE TEXTURE IN MicroMeter		OFFICER/OC		SIZE	CAGE CODE
		OFFICER/DDO		B	2291A
				DWG NO	Y19378A-00
				SCALE	1:5
				AUTOMATED DRAWING (SW)	SHEET 1 OF 1

PROJECT OFFICER

OFT

ASSEMBLY PARTS LIST

Assembly Parts List For: Y19378A-00

Rev: -

Status: Released

Description: BRACKET, BASKET, RIGHT, WELD

FN	CMD	PART NUM	ECO	DESCRIPTION	MB	QTY	U/M	REF. DES./REMARKS	MFG. PN / CUSTOMER	LA	LI
1	MP	Y19379A-00		BRACKET, BASKET, RIGHT	M	1	Each				
2	HO	99946513M		NUT HEX CRES M 8 X0.8D A4-70	P	3	Each		53113-ISO4032-M8-A4-70		

2

DWG NO Y19379A-00

SH 1

1

SHEET REV RECORD

ALL SHEETS ARE THE SAME REVISION

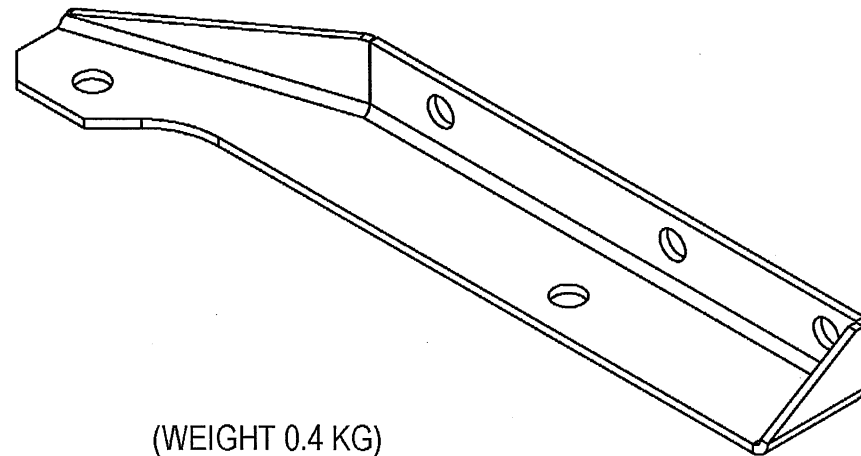
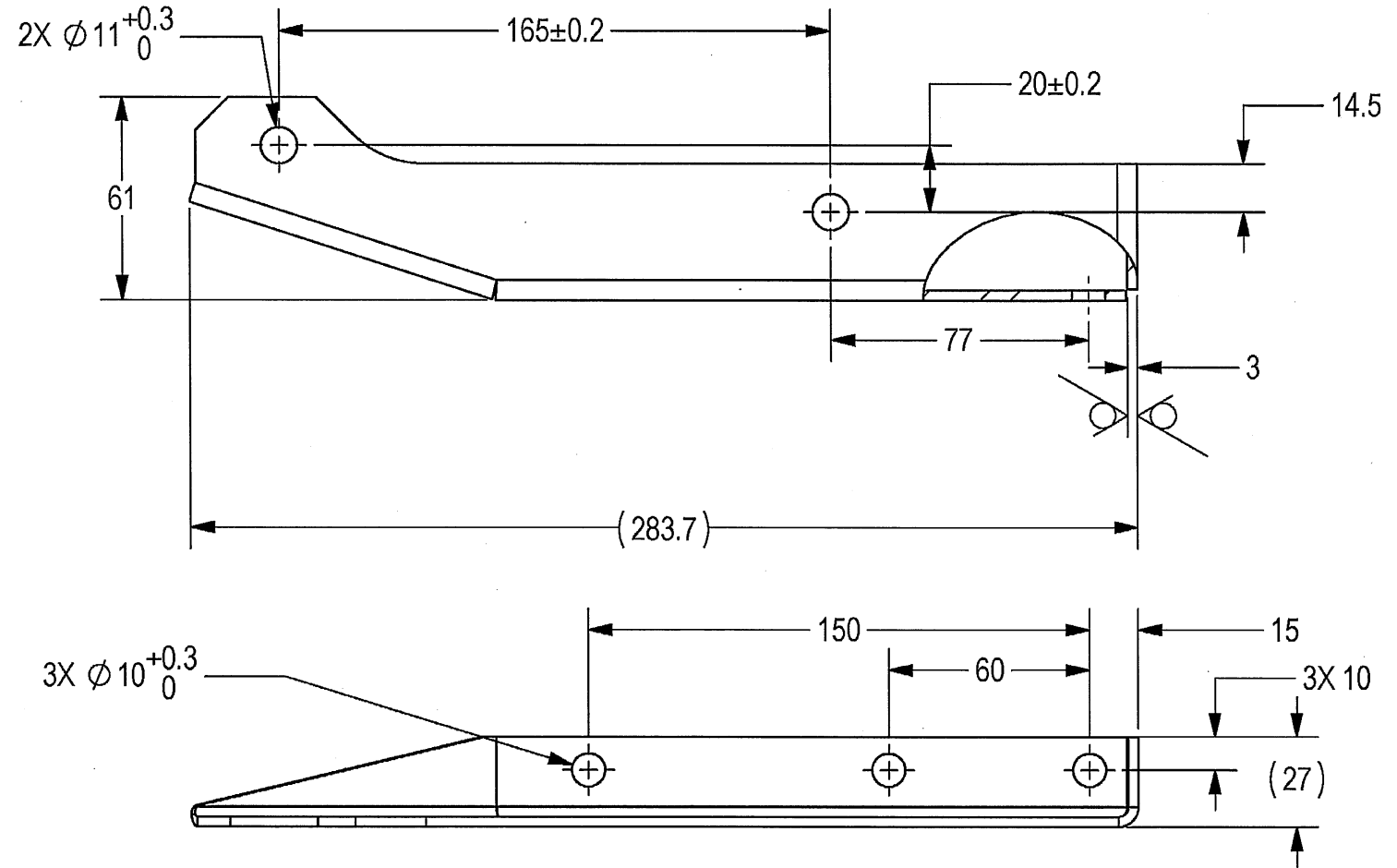
REVISION RECORD

REV	ECO	DESCRIPTION	DATE	APVD
01		2 Rework Freeze	02-Nov-17	Y. Shapira
02		Freeze	19-Nov-17	Y. Shapira
--	T00119	Identical To Previous Released	20-Sep-18	L. Goldshtein

THIS DOCUMENT AND THE INFORMATION CONTAINED IN IT ARE PROPRIETARY AND CONFIDENTIAL TO OFT. NO PERSON OR ENTITY IS ALLOWED TO COPY, REPRINT, REPRODUCE OR PUBLISH ANY PART OF THIS DOCUMENT, NOR DISCLOSE ITS CONTENTS TO OTHERS, NOR MAKE ANY USE OF IT, NOR ALLOW OR ASSIST OTHERS TO MAKE ANY USE OF IT UNLESS BY THE PRIOR WRITTEN EXPRESS AUTHORIZATION OF OFT AND THEN ONLY TO THE EXTENT AUTHORIZED. COPYRIGHT-OFT.

NOTES:

1. INTERPRET THIS DRAWING IAW ASME Y14.100M.
2. MATERIAL: CRES PLATE TYPE 316L, ACC ASTM-A-240.
3. GENERAL TOLERANCE ACCORDING ISO 2768c.
4. DEBURR AND REMOVE SHARP EDGES, APPROX. 0.2X45 Deg.
5. QUALITY ASSURANCE PROVISIONS FOR THIS ITEM PER RDMQD00012P.
6. PACKAGING AND PACKING:
THE FINISHED PART SHALL BE PRESERVED AND PACKAGED IN ACCORDANCE WITH MANUFACTURER'S COMMERCIAL PRACTICE.
7. IDENTIFY PART PER MIL-STD-130 PARA 4.1.B BY LABELING ITS CONTAINER WITH THE PART NUMBER. CHARACTERS 1.25 MM HIGH.



(WEIGHT 0.4 KG)

12.5/√(V)

SEE ATTACHED MEDIA

UNLESS OTHERWISE SPECIFIED		SIGNATURE	DATE	ORDNANCE FACTORY TIRUCHIRAPPALLI	
DIMENSIONS ARE IN MM PER ASME Y14.5 - 2009		DRAWN	18/12/17		
TOLERANCES		CHECKED		TITLE	
LINEAR	ANGULAR	HOS/DDO	P. Fozh	BRACKET, BASKET, RIGHT	
SEE NOTE 3	SEE NOTE 3	OFFICER/PRODN		FOR: BRACKET, BASKET, RIGHT, WELD	OF: 12.7MM SRCG
1st ANGLE PROJECTION		OFFICER/QC		SIZE	CAGE CODE
		OFFICER/DDO		B	2291A
SURFACE TEXTURE IN MicroMeter				DWG NO	Y19379A-00
PROJECT OFFICER		SCALE 1:5		AUTOMATED DRAWING (SW)	SHEET 1 OF 1
PLM Control 02		EPDM DRAWING REV	EPDM MODEL REV	EPDM MODEL STATUS	EPDM MODEL NAME
		02	01	Freeze	Y19379A-00

2