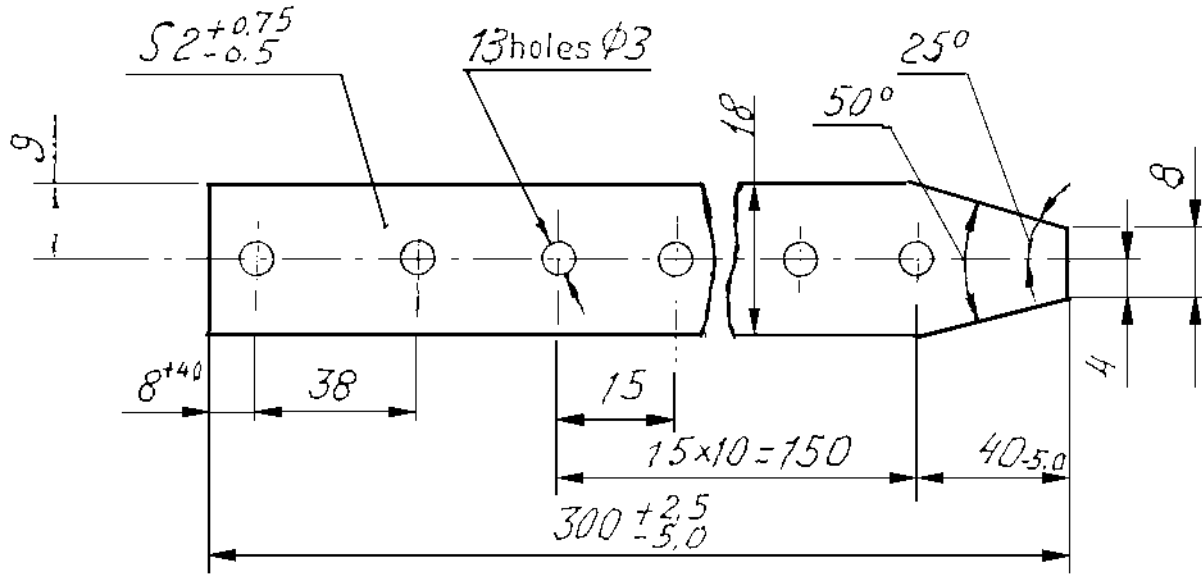


272-49-137



TECHNICAL CONDITIONS

- 1 Alternate material is harness leather type "K" GOST 1904-70 and industrial leather type 8, light chrome-tannage GOST 20836-75
- 2 Unspecified limit deviations of dimensions are $\pm 1\text{mm}$.
- 3 Other requirements are as per technical specifications Ty 38-105816-75.

(A) EQUIVALENT MATERIAL - HARNESS LEATHER TO IS 580-73

00790-ICV
1. Remise
 30-5-2000
 DC(I)No.
 & DATE

(A)
Caron
 ISSUE

EQ. MATERIAL ADDED.

AMENDMENTS

APPROVED

CHECKED

[Handwritten signature]

272-49-137

CONTROLLERATE
 OF
 QUALITY ASSURANCE
 (ICV)

BELT

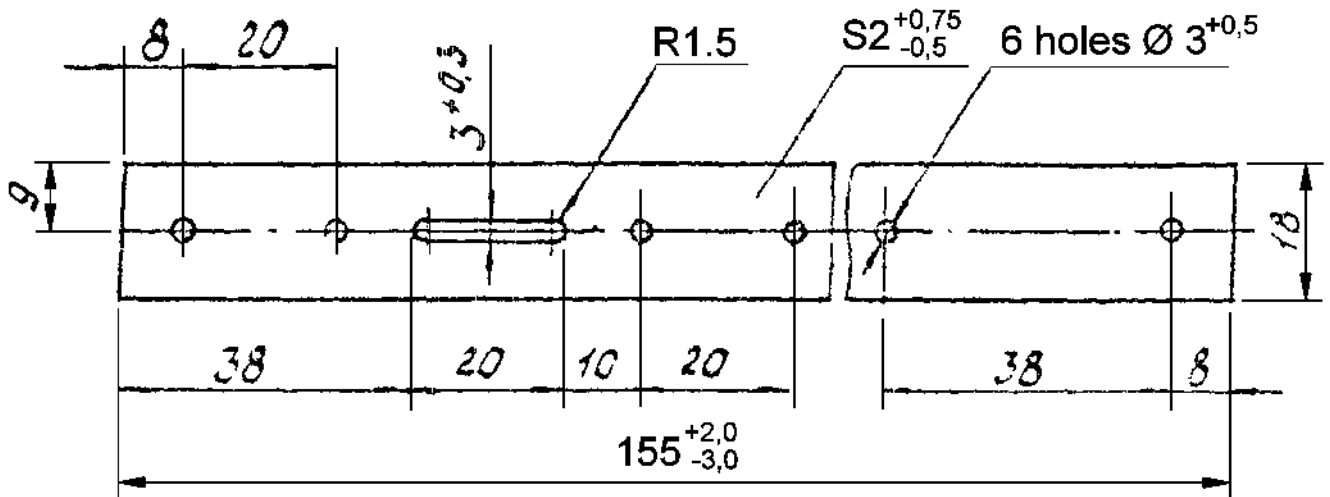
WEIGHT SCALE

0.008 1:1

SHT SHTS

HARNESS LEATHER TYPE "K"
 GOST 1904-70

272-77-2



TECHNICAL CONDITIONS

1) Alternate material is Harness leather , Type K GOST 1904-70.

2) Unspecified limit deviations are $\pm 1\text{mm}$.

3) Using of leather from swine skin is not permitted.

4) Other requirements are as per Technical Specifications Ty 38-105816-75.

Ⓐ EQUIVALENT MATERIAL HARNESS LEATHER TO IS: 580-73

00667-ICV

Ⓐ

EQ. MATERIAL ADDED IN THE DRAWING.

07-12-98

Issue

DC(I)No. & DATE

ISSUE

AMENDMENTS

APPROVED

CHECKED

272-77-2

CONTROLLERATE OF QUALITY ASSURANCE (ICV)

BELT

WEIGHT

SCALE

0.03

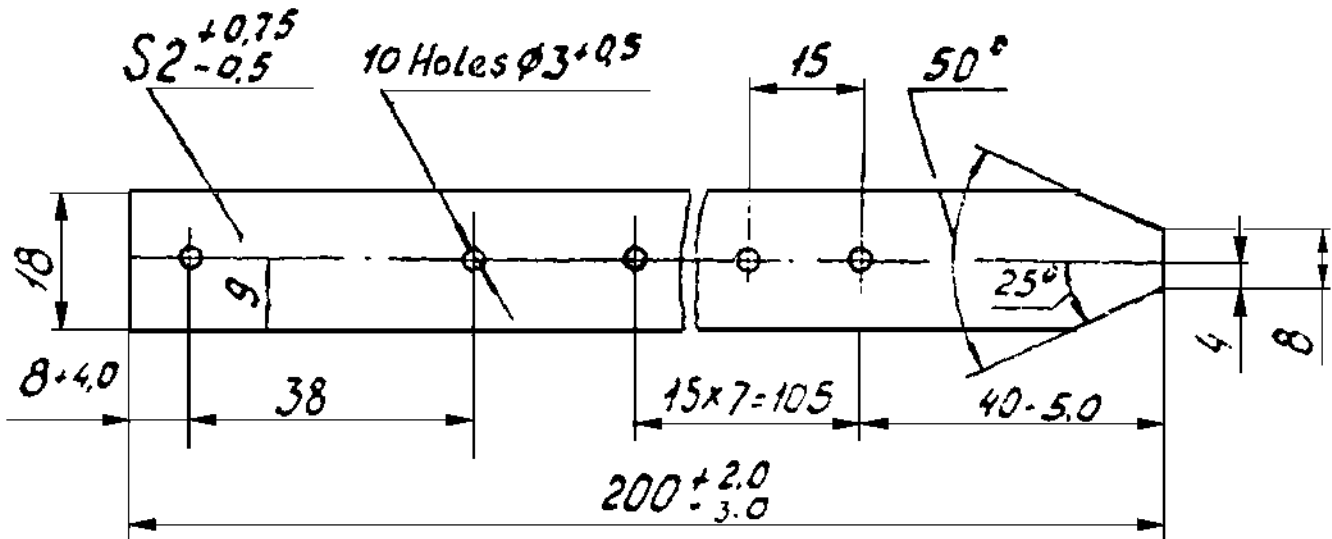
1:1

SHT

SHTS

HARNESS LEATHER TYPE *27* GOST 1904-70

272-77-8



1 TECHNICAL CONDITIONS

- 1) Alternate material is harness leather type 'K' GOST - 1904-70.
- 2) Unspecified limit deviations of dimensions are $\pm 1,0$ mm.
- 3) Using of leather from swine skin is not allowed.
- 4) Other requirements are as per technical specifications Ty 38-105816-75.

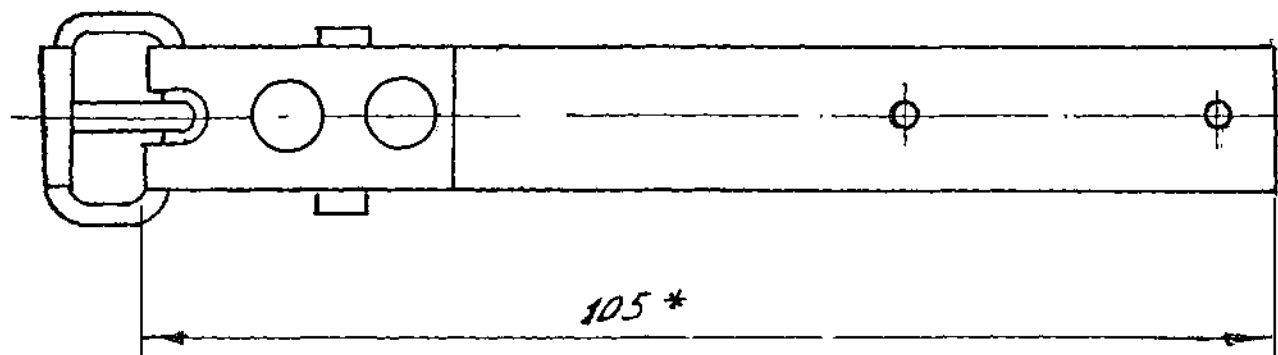
01017-ICV <i>[Signature]</i> 10 FEB 06	(A)	DS CAT No. ADDED & NOMEHCLATURE WAS 'BELT'
DC(I)No. & DATE	ISSUE	AMENDMENTS

APPROVED	<i>[Signature]</i> H VASU	272-77-8	DS CAT PART No. (A)	
CHECKED	<i>[Signature]</i>		LV2/RCV 5340-017076	
CONTROLLERATE OF QUALITY ASSURANCE (ICV)		STRAP LEATHER (A)	WEIGHT	SCALE
			0.03	1:1
		HARNESS LEATHER TYPE "K" Гост 1904-70		SHT

272-77-Sb103Sb



1. * Dimension is given for reference.

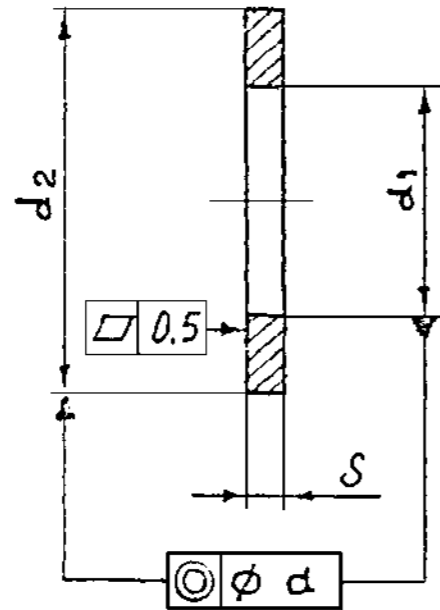


01009-ICV <i>[Signature]</i>	(B)	REF NO: 4; DESCRIPTION BUTTON TYPE RIVET STEEL NICKEL - PLATED 3x25 OST 17x 600-01 WAS RIVET -CHOLNITEN TYPE STEEL, NICKEL-PLATED 3x25
01013-ICV <i>[Signature]</i> 19-01-06	(A)	DS CAT PART NO ADDED AND DESCRIPTION "STRAP LEATHER WAS "BELT"
DCU NO: DATE:	ISSUE	NATURE OF AMENDMENT

APPROVED <i>[Signature]</i>	272-77-Sb103Sb	DS CAT PART No. (A) LV2/ICVs 5340-017086	
CHECKED <i>[Signature]</i>	(A) BELT STRAP LEATHER ASSEMBLY DRAWING (FASTENING OF ARM MAGAZINE)	WEIGHT	SCALE
CONTROLLERATE OF QUALITY ASSURANCE (ICV)		0.020	1:1
		SHT 1	SHTS 1

672-31-162

12.5



TECHNICAL CONDITIONS

1. ALTERNATE MATERIAL STEEL 08, 08Kn, 10, 10Kn
GOST 1050-74 st 3, st 3Kn GOST 380-88.
 2. COATING : ZINC plated 9 MICRONS THICK
CHROMATIZATION REMOVE HYDROGEN
EMBRITTELEMENT.
- ④ EQ. MATERIAL: GRADE Fe410 to IS: 5986-92 FOR 672-31-162-03

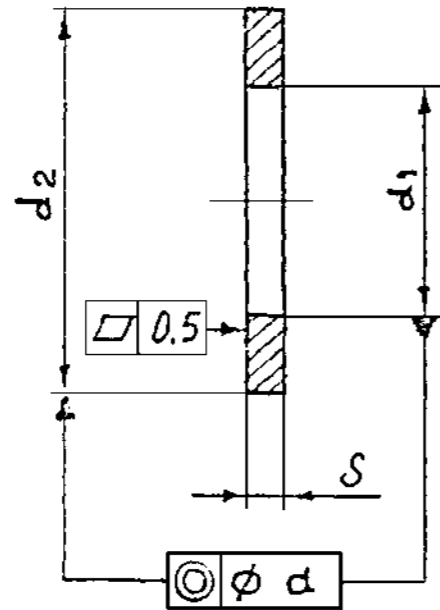
DIMENSIONS IN mm

DESIGNATION	d ₁		d ₂		S		d	MATERIAL	WEIGHT Kg
	NOMINAL	TOLERANCE	NOMINAL	TOLERANCE	NOMINAL	TOLERANCE			
672-31-162	2,2	+0,25	5,0	-0,30	1,0		0,2	STEEL 10 GOST 1050-74	0,00013
-01	6,4	+0,36	12,5	-0,43		±0,2	0,3	st 3 GOST 380-88	0,0007
-02	13,0	+0,43	24,0	-0,52	0,3	±0,3	0,4		0,0008
-03							2,0		0,005
-04							1,5		0,006
-05	21,0	+0,52	34,0	-0,62	2,0		0,5	STEEL 10 GOST 1050-74	0,009
-06	23,0		39,0						0,011

00791-ICV V Rows 30-5-2000		④ New	EQ. MATERIAL ADDED. 675-31-162-03	
00283-ICV			NEW DRG. PREPARED BASED ON NEW DRG. INTRODUCED BY THE COLLABORATORS. (D-1092)	
31-7-91		DC(I)No. & DATE	ISSUE	AMENDMENTS
NEAREST EQ. MATERIAL		SEE TABLE		
ORGL MATERIAL:-		ALL SHARP EDGES & COR- NERS TO BE ROUNDED OFF		
ALL THREADS TO CONFORM TO SPECIFICATION		STAMP OR ETCH, PART No. MANUFACTURER'S NAME & YEAR OF MFR.		
DRG. NOT TO BE SCALED		TOLERANCE ON DIMENSIONS UNLESS OTHERWISE SPECIFIED		
SCALE: -		USED ON: 675-62-Sb101		
DATE :	31 JUL 91			
DRN.	WT :- (Kg)	672-31-162		
TCD.	SEE TABLE			
CHD		WASHER		
APPD				
CONTROLLERATE OF QUALITY ASSURANCE (INFANTRY COMBAT VEHICLES)				

672-31-162

12.5



TECHNICAL CONDITIONS

1. ALTERNATE MATERIAL STEEL 08, 08Kn, 10, 10Kn
GOST 1050-74 st 3, st 3Kn GOST 380-88.
 2. COATING : ZINC plated 9 MICRONS THICK
CHROMATIZATION REMOVE HYDROGEN
EMBRITTELEMENT.
- ④ EQ. MATERIAL: GRADE Fe410 to IS: 5986-92 FOR 672-31-162-03

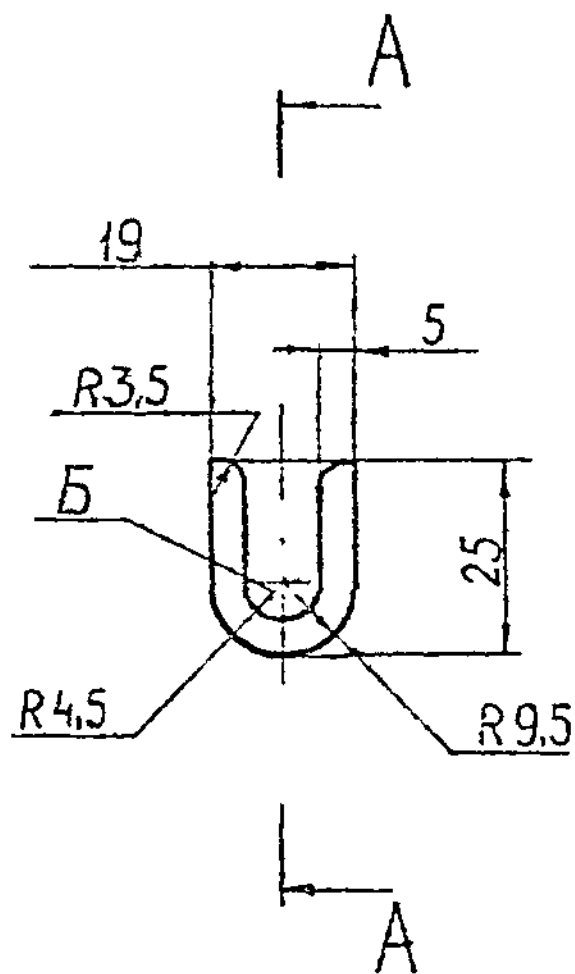
DIMENSIONS in mm

DESIGNATION	d ₁		d ₂		S		d	MATERIAL	WEIGHT Kg.
	NOMINAL	TOLERANCE	NOMINAL	TOLERANCE	NOMINAL	TOLERANCE			
672-31-162	2,2	+0,25	5,0	-0,30	1,0		0,2	STEEL 10 GOST 1050-74	0,00013
-01	6,4	+0,36	12,5	-0,43		±0,2	0,3	st 3 GOST 380-88	0,0007
-02	13,0	+0,43	24,0	-0,52	0,3	±0,3	0,4		0,0008
-03							2,0		0,005
-04							1,5		0,006
-05	21,0	+0,52	34,0	-0,62	2,0		0,5	STEEL 10 GOST 1050-74	0,009
-06	23,0		39,0						0,011

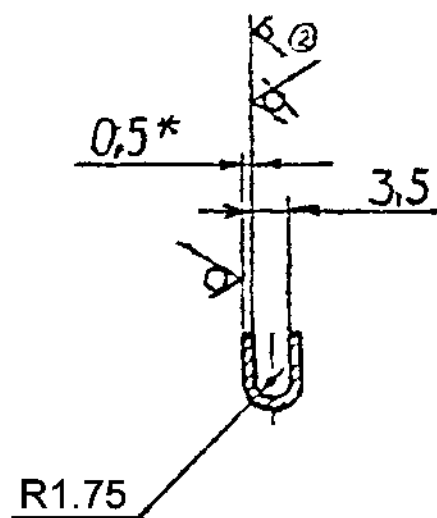
00791-ICV V. Rows 30-5-2000		④ New	EQ. MATERIAL ADDED. 675-31-162-03	
00283-ICV			NEW DRG. PREPARED BASED ON NEW DRG. INTRODUCED BY THE COLLABORATORS. (D-1092)	
31-7-91		DC(I)No. & DATE	ISSUE	AMENDMENTS
NEAREST EQ. MATERIAL		SEE TABLE		
ORGL MATERIAL:-		ALL SHARP EDGES & CORNERS TO BE ROUNDED OFF		
ALL THREADS TO CONFORM TO SPECIFICATION		STAMP OR ETCH, PART No. MANUFACTURER'S NAME & YEAR OF MFR.		
DRG. NOT TO BE SCALED		TOLERANCE ON DIMENSIONS UNLESS OTHERWISE SPECIFIED		
SCALE: -		USED ON: 675-62-Sb101		
DATE: 31 JUL 91	WT :- (Kg)	WASHER		
DRN.	SEE TABLE	672-31-162		
TCD.		CONTROLLERATE OF QUALITY ASSURANCE (INFANTRY COMBAT VEHICLES)		
CHD				
APPD				

675-64-646

Rz360
✓(✓)



A-A
M 2:1



TECH. CONDITIONS

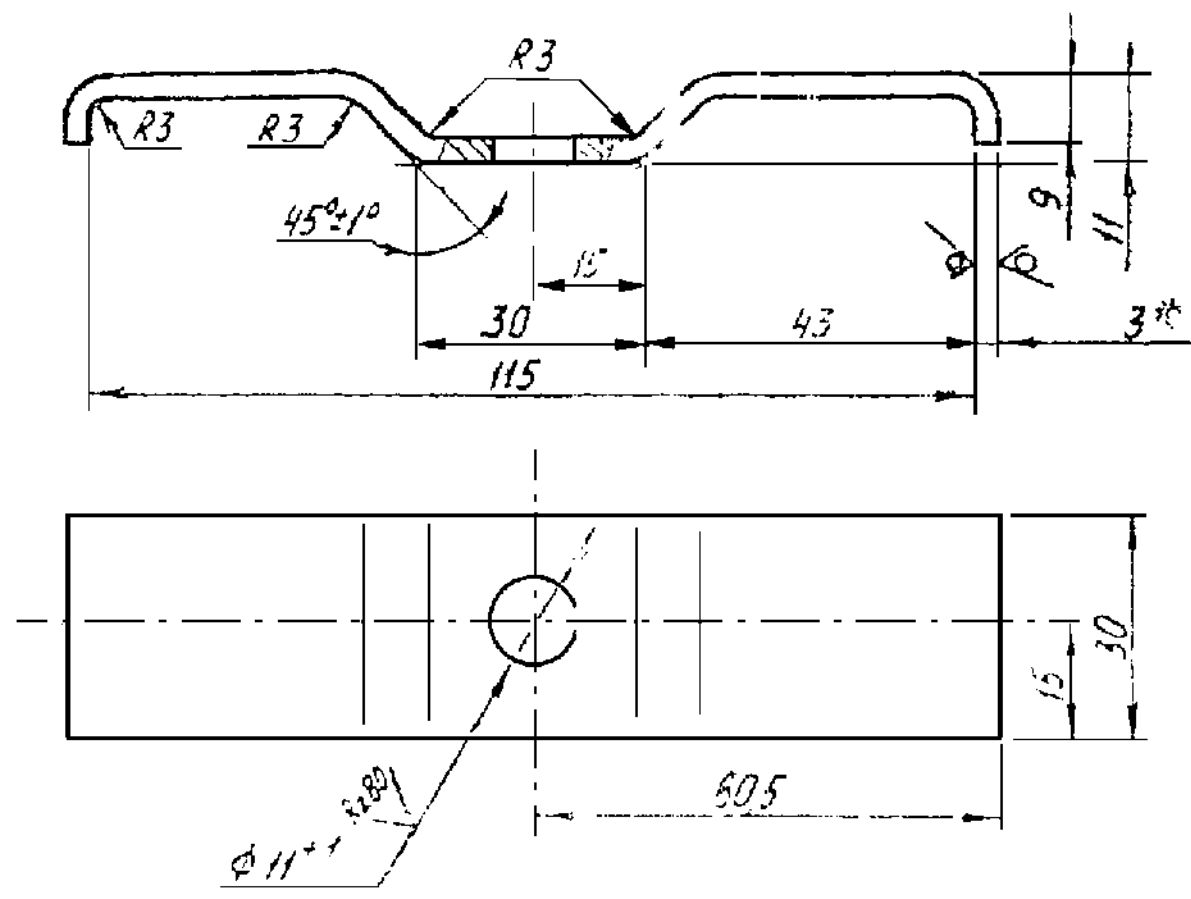
1. Material substitute: steel sheet, grades 08кп, 10кп and 20 ГОСТ 1050-74.
2. Limit deviations of sizes are ± 0.5 mm.
3. Size B may have folds.
4. Coating: zink plating with subsequent chromate treatment, 9. Remove hydrogen embrittlement.
5. [□]Reference size.

APPROVED		675-64-646		
CHECKED				
CONTROLLERATE OF QUALITY ASSURANCE (ICV)	SHEET	END PIECE	WEIGHT	SCALE
			0.003	1:1
			SHT 1	SHTS 1
		A-113-0-0.5 ГОСТ 19904-74 5-II-Г-10 ГОСТ 16523-70		

675-94-131

Восстановительный подлинник №1

Pz320/ (V)



1. Material substitute is sheet made of steel, grades 08 КП, 10 КП 20 ГОСТ 1050-74.
2. Unspecified limit deviations of sizes are ± 1 mm.
3. Coating: primer ФЛ-03 № ГОСТ 9109-81, enamel ПС-223 of dark grey colour ГОСТ 14923-78.
4. *Size is given for reference

APPROVED
 CHECKED
 CONTROLLERATE
 OF
 QUALITY ASSURANCE
 (ICV)

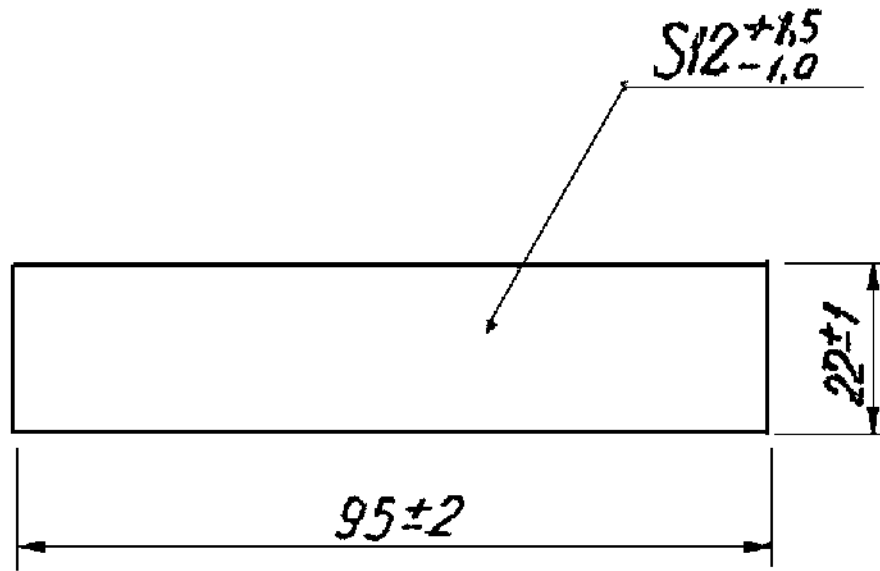
675-94-131

STRAP

WEIGHT	SCALE
0.097	1:1
SHT 1	SHTS 1

SHEET 5 П-Г-10, GOST 16523-70

675-94-146



1. Material substitute is sponge rubber I group TY 38-105817-75.
2. Other requirements are according to TY 38-105817-75

APPROVED

CHECKED

Handwritten signature and initials, possibly 'D. H. H.', written over the 'APPROVED' and 'CHECKED' fields.

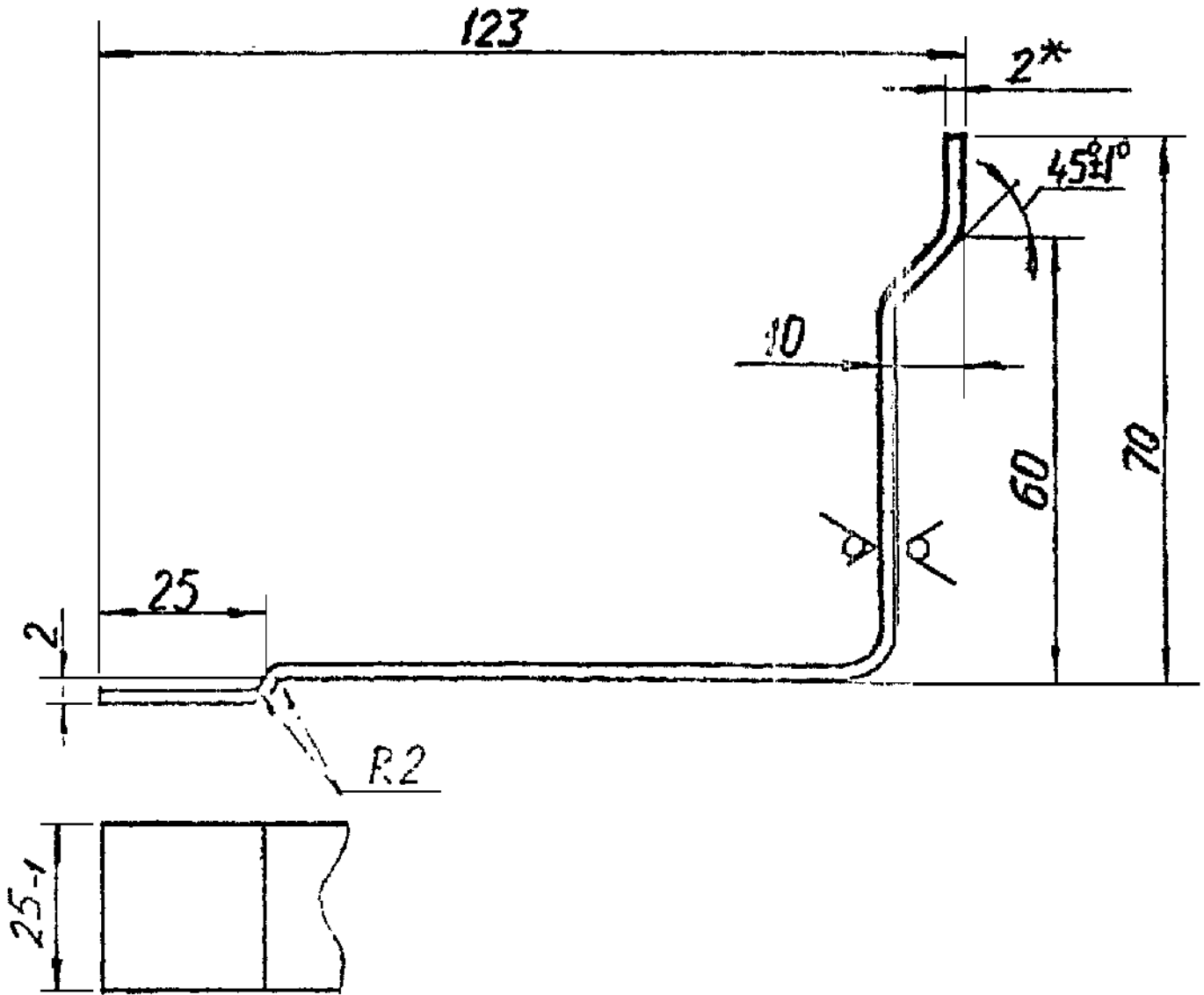
675-94-146

CONTROLLERATE
OF
QUALITY ASSURANCE
(ICV)

GASKET

SPONGE RUBBER Gr.II
TY 38-105867-75

WEIGHT	SCALE
0.009	1:1
SHT 1	SHTS 1



1. Unspecified limit deviations of sizes ± 1 mm.
2. Unspecified bending radii are 5 mm.
3. Material substitute is Cr2, Cr5 ГОСТ 380-71 and 15, 20, 30 ГОСТ 2050-74.
4. *Size is given for reference

APPROVED

CHECKED

675-94-147

CONTROLLERATE
 OF
 QUALITY ASSURANCE
 (ICV)

STRAP

WEIGHT SCALE

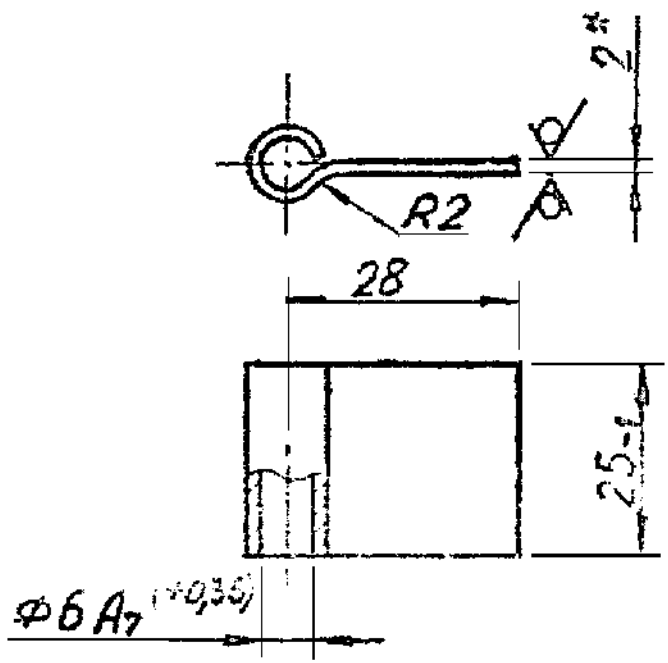
0.081 1:1

SHT 1 SHTS 1

SHEET 5-20, GOST 19903-74
 10, GOST 16523-70

675-94-148

Rz 320 / Rz 320
 ✓ ϕ ✓ (V)



1. Unspecified limit deviations are ± 1 mm.
2. Material substitute is Ct2, Ct5 ГOCT 380-71 and 15, 20, 30 ГOCT 1050-74.
3. *Size is given for reference

APPROVED
 CHECKED
 CONTROLLERATE
 OF
 QUALITY ASSURANCE
 (ICV)

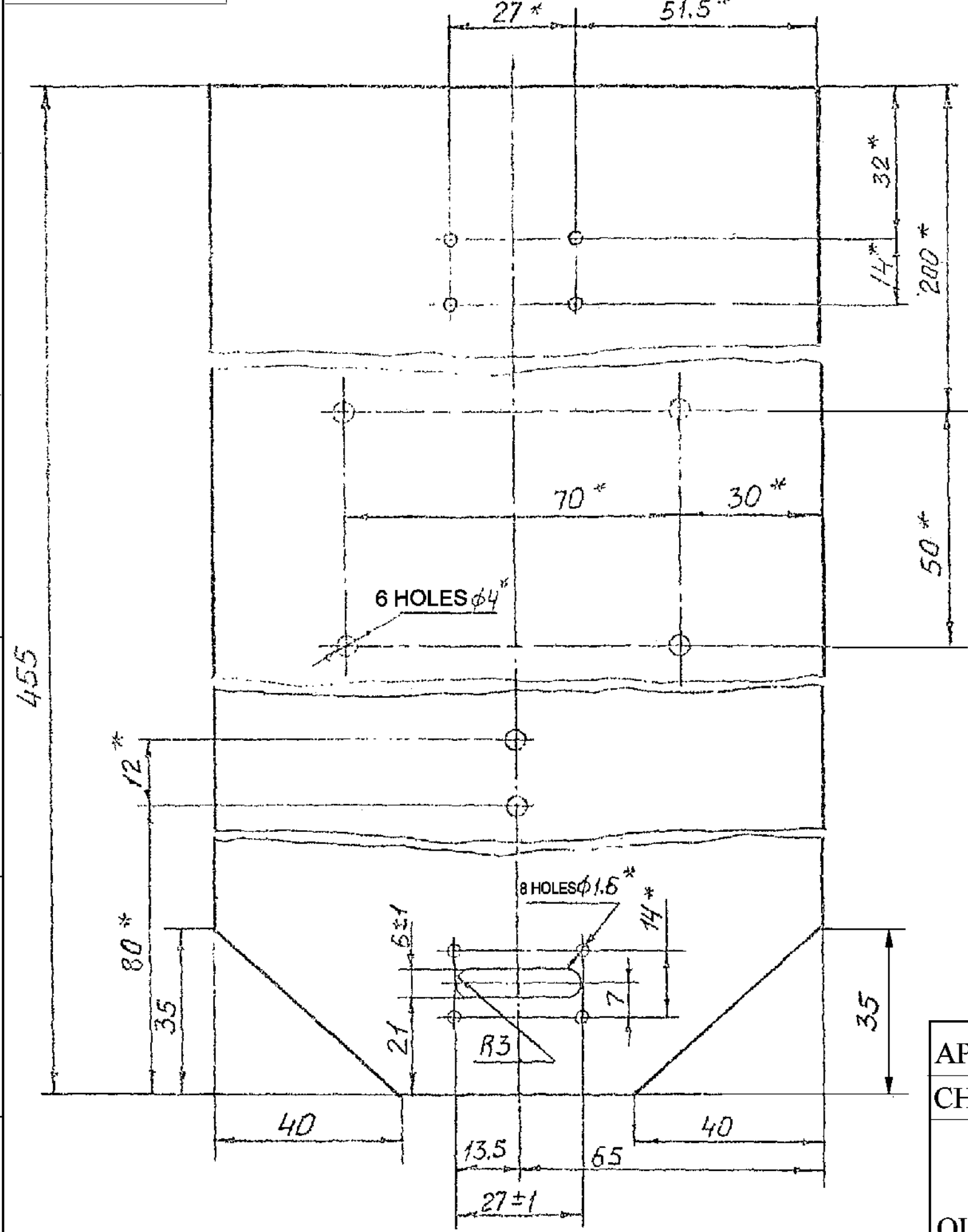
675-94-148

HINGE

WEIGHT	SCALE
0.022	1:1
SHT 1	SHTS 1

SHEET 5-2, GSOT 19903-74
 10, GOST 16523-70

675-94-156


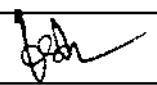


- 1.*Machine to fit the sizes of holes according to parts:
730-77-c6108, 730-77-c6109, 730-77-18, 730-77-25.
2. Unspecified limit deviations of sizes are ± 2 mm.
- 3.*Vinyl leather T of type B0-1, of brown or black colour on moleskin base, grade I ГОСТ 23367-78

APPROVED		675-94-156	
CHECKED			
CONTROLLERATE OF QUALITY ASSURANCE (ICV)		BODY	
		WEIGHT	SCALE
		0.06	1:1
		SHT 1	SHTS 1
		VINYL LEATHER *	

455

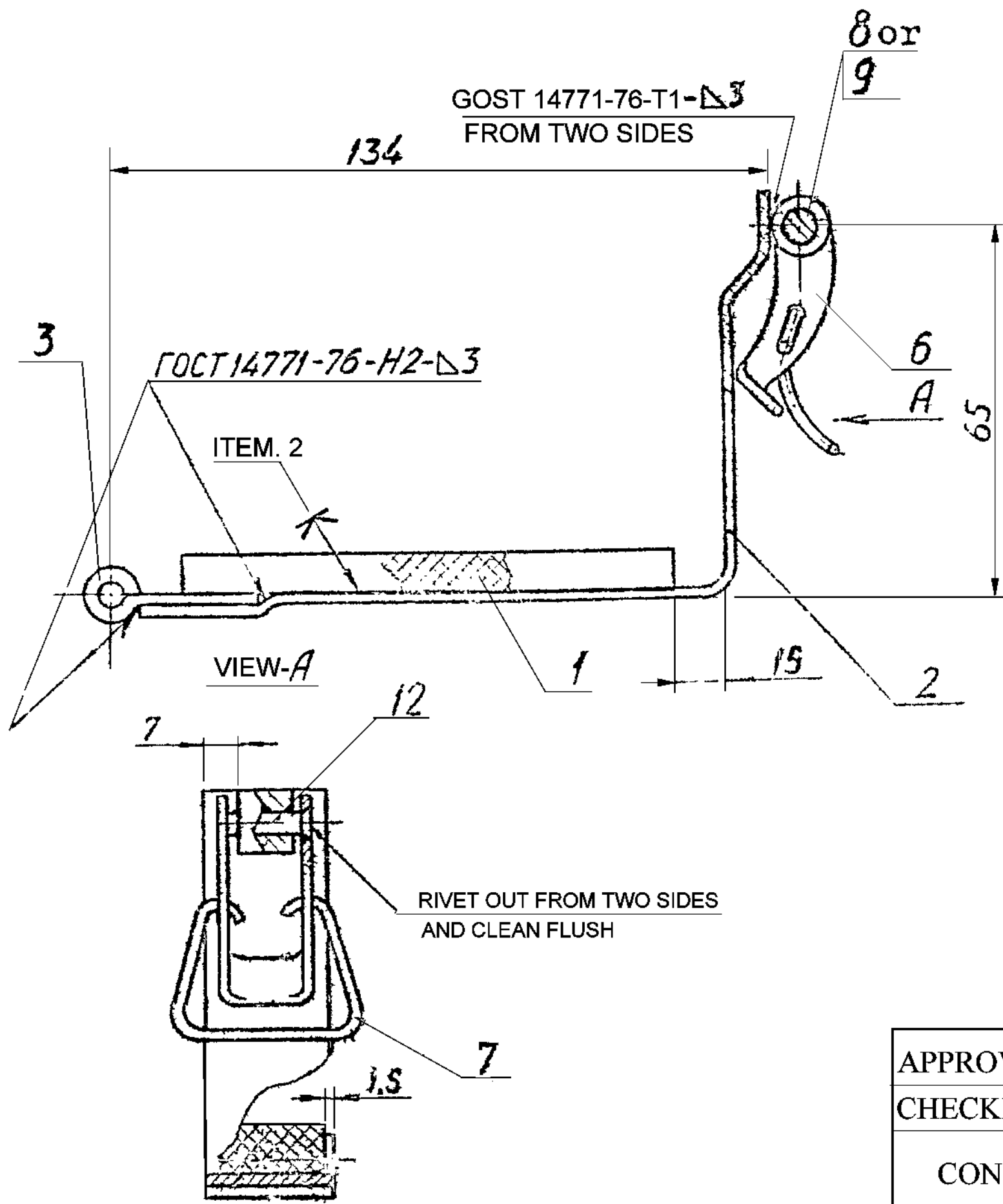
No.	Designation	Description	Qty	Remark
	675-94-c61680B	<u>List of Documents</u> Assembly drawing		
		<u>Parts</u>		
1	675-94-146	Gasket	1	
2	675-94-147	Strap	1	
3	675-94-148	Hinge	1	
6	765-94-124	Lever	1	
7	765-94-125	clip	1	
8	765-94-127	Bushing	1	It is allowed to replace by Ref. No. 9
9	765-94-127-K	Bushing	1	It is allowed to replace by Ref. No. 8
		<u>Materials</u>		
12		Wire K04 FOCT 792-67 ℓ = 20	1	

APPROVED		675-94-Sb168	DS CAT PART No. LV2/ICVs 5340-135197	
CHECKED				WEIGHT SCALE
CONTROLLERATE OF QUALITY ASSURANCE (ICV)		CLAMP		
			SHT 1	SHTS 1

675-94-Sb168Sb

TECHNICAL CONDITIONS

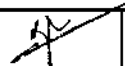
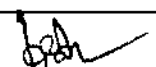
1. Unspecified limit deviations of sizes are ± 1 mm.
2. Glue 88 HH TV 38-105540-73.
3. Parts 6 and 7 must easily rotate in hinge without binding. Axle 12 should be lubricated with grease Lythol-24 ГОСТ 21150-75.
4. Coating: primer ФН-03 К ГОСТ 9109-81, enamel ПФ-223 of white colour -1 ГОСТ 14923-78 except for parts Ref. Nos 1, 6, 7.



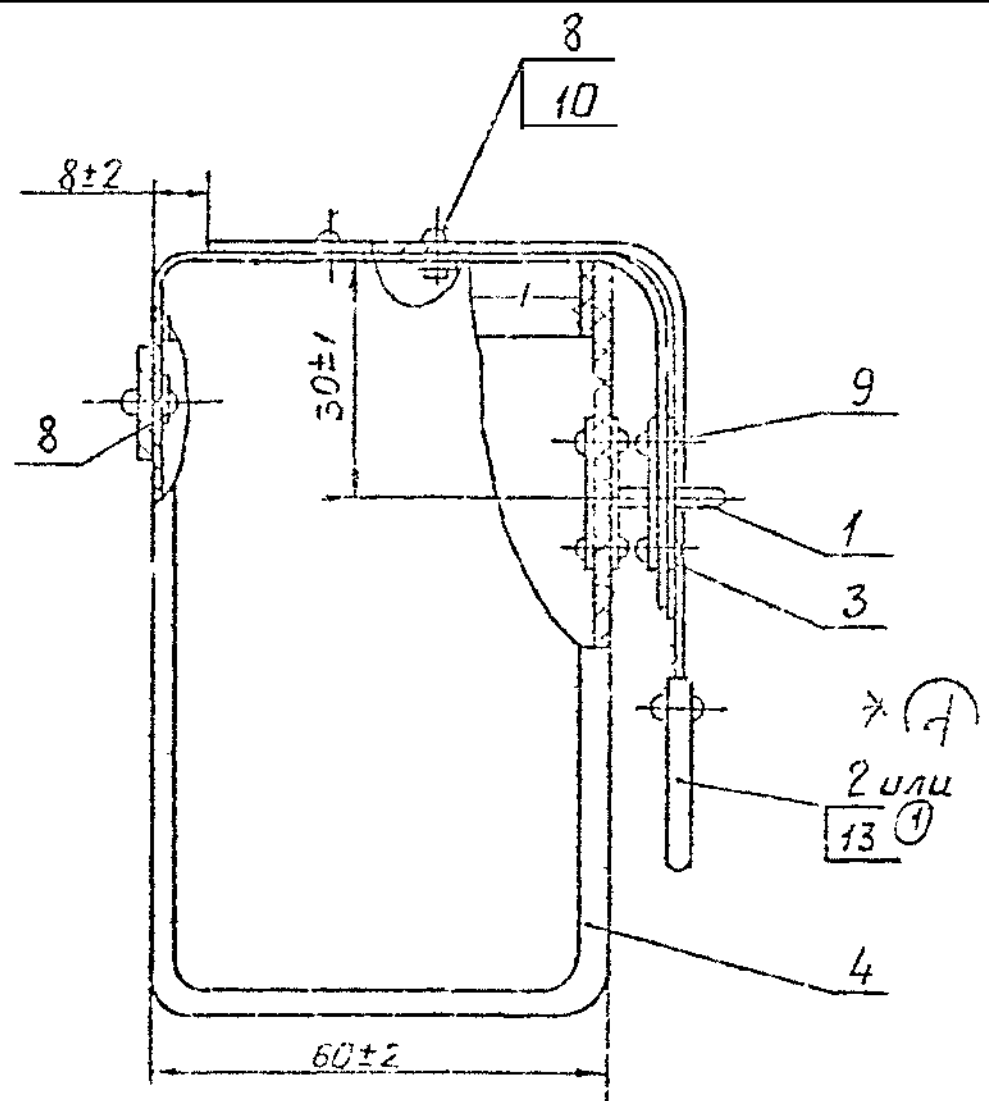
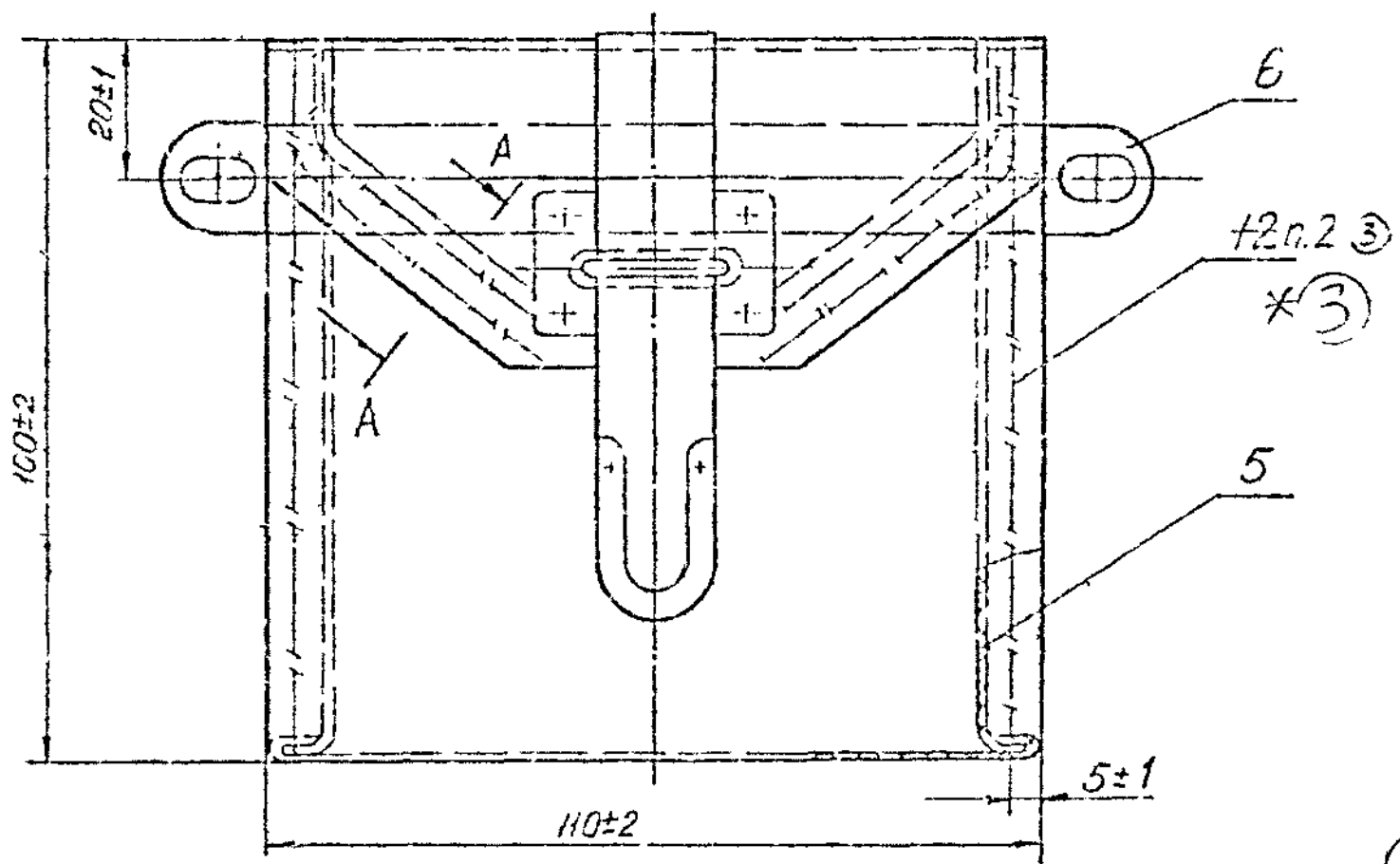
01023-ICV <i>[Signature]</i> 26-6-06	(A)	DS CAT PART No. ADDED.
DC(I)No. & DATE	ISSUE	AMENDMENTS

APPROVED	<i>[Signature]</i>	675-94-Sb168Sb	DS CAT PART No. (A)	
CHECKED	<i>[Signature]</i>		LV2/ICVs 5340-135197	
CONTROLLERATE OF QUALITY ASSURANCE (ICV)		CLAMP ASSEMBLY DRAWING	WEIGHT	SCALE
			0.15	1:1
			SHT	SHTS

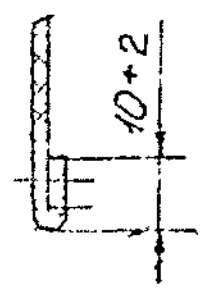
No.	Designation	Description	Qty	Remark
	675-94-c6172CB	<u>List of Documents</u> Assembly drawing		
		<u>Assembly Units</u>		
1	730-77-c6108	Plate Assy	1	1 piece. It is allowed to replace by Ref. No. 13
2	730-77-c6109	Belt		
13	765-94-c6364	Belt		1 piece. It is allowed to replace by Ref. No. 2
		<u>Parts</u>		
3	730-77-18	Plate	3	
5	730-77-24	Side member	2	
6	730-77-25	Strap	1	
4	675-94-156	Body	1	
		<u>Standard Items</u>		
8		Washer 4.01.019 or 4.02.019 FOCT 11371-78	4	
9		Rivet 2x6.37 FOCT 10299-80	8	
10		Nickel plated steel eyelet 3X-25 OCT 17-600-76	4	

APPROVED		675-94-Sb172	DS CAT PART No. LV2/ICVs 8105-000597	
CHECKED				WEIGHT
CONTROLLERATE OF QUALITY ASSURANCE (ICV)		BAG		
			SHT 1	SHTS 1

675-94-Sb172Sb



(2) ×
А-А повернуто



1. Puncture the holes in material of the bag according to the holes in parts 1, 2, 3, 6.
2. Glossy cotton thread No. 1 of black colour ГОСТ 6309-80.
3. It is allowed to replace thread by glossy cotton thread No. 1 of black colour ГОСТ 6309-80

×(2) A - A, revolved
×(3) Item 2
×(4) 2 or 13

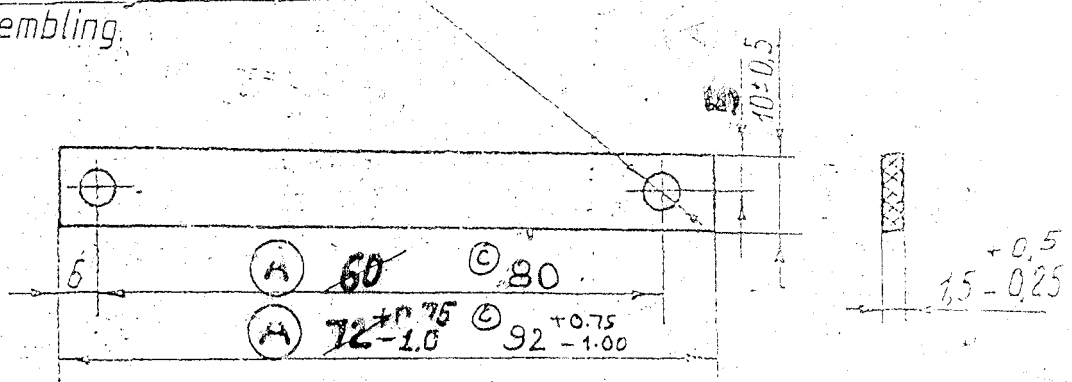
01023-ICV <i>[Signature]</i> 26-6-06	(A)	DS CAT PART No. ADDED.
DC(I)No. & DATE	ISSUE	AMENDMENTS

APPROVED	<i>[Signature]</i>	675-94-Sb172Sb	DS CAT PART No. (A) LV2/ICVs 8105-000597	
CHECKED			WEIGHT	SCALE
CONTROLLERATE OF QUALITY ASSURANCE (ICV)		BAG	0.115	1:1
			SHT 1	SHTS 1

700-10-1074

00749-ICV V. Romanov	(B)	EQ. MATERIAL ADDED
25 12-99		
DC (I) NO		NATURE
DATE	ISSUE	AMENDMENT

Punch 2 Hole $\phi 5$, in assembling.



- 1). Alternate material is leather, type "K", GOST 1904-70.
- 2). Other requirements are as per Technical specifications TY38-105816-75.
- 3). Alternate material is leather, GOST 1904-70, 2^{+0.75}_{-0.5} mm thick.

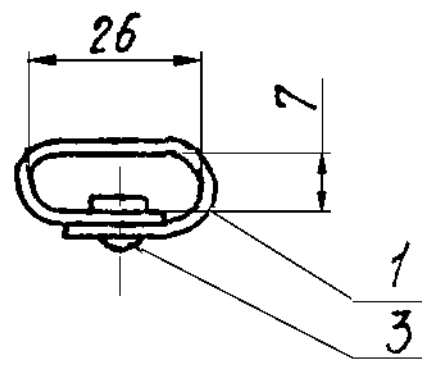
(B) EQ. MATERIAL: - HARNESS LEATHER IS. 580-73

154
94

00329-ICV		DIMENSION - 92 ^{+0.75} _{-1.00} 8-80 CHANGED TO - 72 ^{+0.75} _{-1.00} & 60 RESPECTI- VELY - CENTRE DISTAN- CE CHANGED TO 60	01101-ICV		DIMENSION - 72 ^{+0.75} _{-1.00} & 60 CHANGED TO - 92 ^{+0.75} _{-1.00} & 80 RES- PECTIVELY
JUN 92	(A)			(C)	
DC (I) NO & DATE	ISSUE	NATURE OF AMENDMENTS	DC (I) NO & DATE	ISSUE	AMENDMENT

APPROVED		700-10-1074	
CHECKER		STRAP BELT	
CONTROLLER & DATE OF INSPECTION (ICV)	LEATHER TYPE A GOST 1904-70		94
	WEIGHT	SCALE	
	0.112	1:1	
		SHT	SHTS.
		161	OF 289

700-10-Sb446



				<u>Other articles.</u>
3	Ⓐ	BUTTON TYPE Rivet	Kholmiten	
			Steel, nickle-plated 3x-25	1
			OST 17x-600-81	
			<u>Parts.</u>	
1	700-10-1074	Strap belt.		1 For KM3 650-72-97
REF. NO	DESIGNATION	DESCRIPTION		QTY REMARKS.

01009-ICV <i>[Signature]</i>	Ⓐ	REF NO 3, DESCRIPTION BUTTON TYPE RIVET STEEL, NICKLE-PLATED 3x25 OST 17 X 600 / 81 WAS RIVET - KHOLMITEN STEEL NICKLE - PLATED 3x26
DC(I)No. & DATE	ISSUE	AMENDMENTS

APPROVED *[Signature]*
E.P. RAQ, SSOI

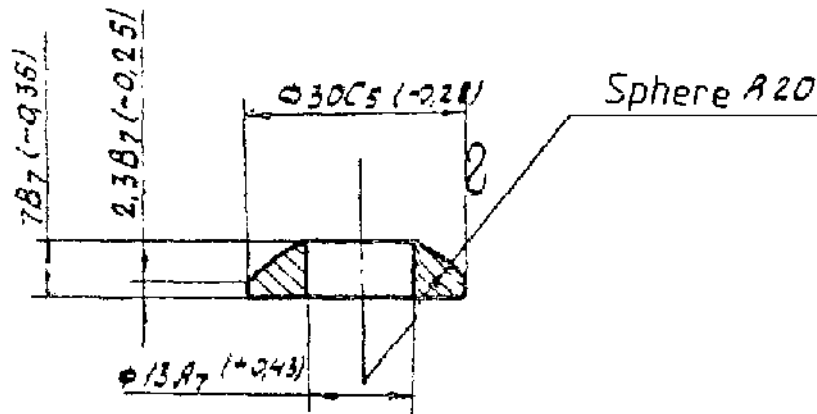
CHECKED *[Signature]*
S. S. GORDEA

700-10-Sb446

CONTROLLERATE
OF
QUALITY ASSURANCE
(ICV)

STRAP ASSY.

	WEIGHT	SCALE
	0.011	1:1
SHT	SHTS	



1. Alternate material is Steel CT5 GOST 380-71 and 35, 40, 50 GOST 1050-74 and 40Г GOST 4543-71.
2. Coating: Zinc-plated, 15 microns thick, chromated.

Ⓐ EQ. MATERIAL:- EN8 (080M40) TO BS: 970-83.

01015-ICV <i>[Signature]</i> 24 OCT 05	Ⓐ	EQ. MATERIAL ADDED.
DC(I)No. & DATE	ISSUE	AMENDMENTS

APPROVED *[Signature]* H VASU
CHECKED *[Signature]* D. Kadivreh

700-31-853

CONTROLLERATE
OF
QUALITY ASSURANCE
(ICV)

SPHERICAL
WASHER

WEIGHT SCALE

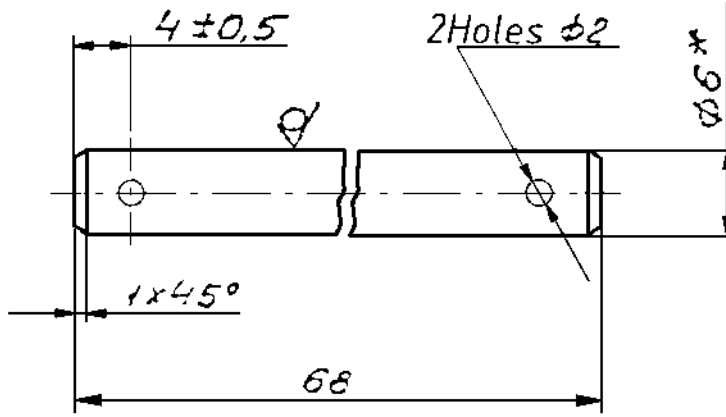
0.016 1:1

SHT 1 SHTS 1

45 GOST 1050-74

700-48-179

R2E0/ (✓)



1. Alternate material is Steel cm3, GOST 380-71 and Steel 10, 15, 25, GOST 1050-74 as well as Steel 15f and 20f, GOST 4543-71.
2. Unspecified limit deviations of dimensions are as follows:
For holes -as per A₇ and for shafts -as per B₇.
3. Relative position of holes is arbitrary.
4. * Dimension is given for reference.
5. Coating: Zinc-plating, 24 microns thick, chromating.

APPROVED

CHECKED

700-48-179

CONTROLLERATE
OF
QUALITY ASSURANCE
(ICV)

SHAFT

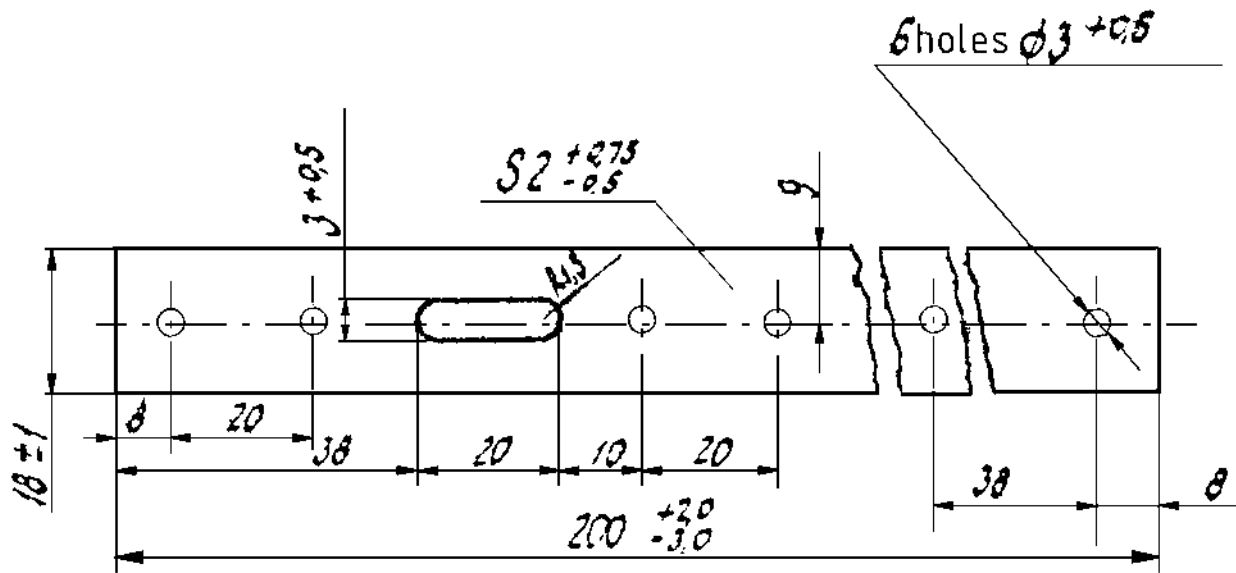
WEIGHT SCALE

0.0135 2:1

SHT SHTS

ROUND 6-5 GOST 7417-75
BAR 20-B GOST 1051-73

701-77-13



1. Alternate material is harness leather type k, GOST 1904-70, and industrial leather, type 8, light, chrome-tanned, GOST 20836-75.
2. Other requirements are as per Technical specifications TY 38-105816-75.
3. Holes may be punched during assembly.
4. Unspecified limit deviations of dimensions are $\pm 1\text{mm}$.

APPROVED

[Signature]

CHECKED

[Signature]

701-77-13

CONTROLLERATE
OF
QUALITY ASSURANCE
(ICV)

BELT

HARNESS LEATHER, TYPE "K"
GOST 1904-70

WEIGHT

SCALE

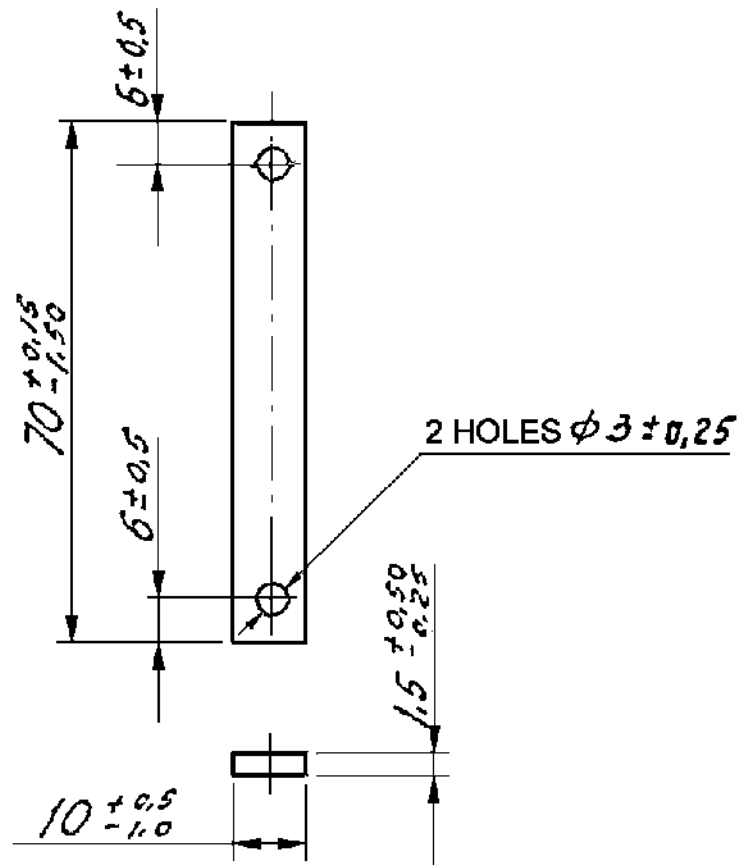
0.03

1:1

SHT

SHTS

701-85-130



TECHNICAL CONDITIONS

1. Alternate material is harness leather of type K GOST 1904-70.
 2. Alternate material is harness leather, GOST 1904-70, thick $2^{+0.75}_{-0.50}$
 3. Other requirements are to be as per technical specifications Ty38-105816-75.
- Ⓐ EQUIVALENT MATERIAL HARNESS LEATHER TO IS: 580-73.

00667-ICV <i>R. A. A.</i>	Ⓐ <i>W. A.</i>
02-12-98	
DC(I)No. & DATE	ISSUE

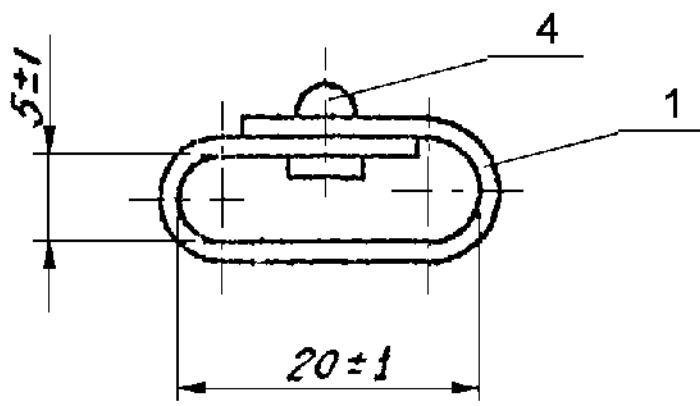
EQ. MATERIAL ADDED IN THE DRAWING.
AMENDMENTS

APPROVED
 CHECKED *[Signature]*
 CONTROLLERATE OF QUALITY ASSURANCE (ICV)

701-85-130
STRAP OF BELT LOOP
 LEATHER TYPE √GOST 1904-70

	WEIGHT	SCALE
	0.001	1:1
SHT 1	SHTS 1	

701-85-Sb169



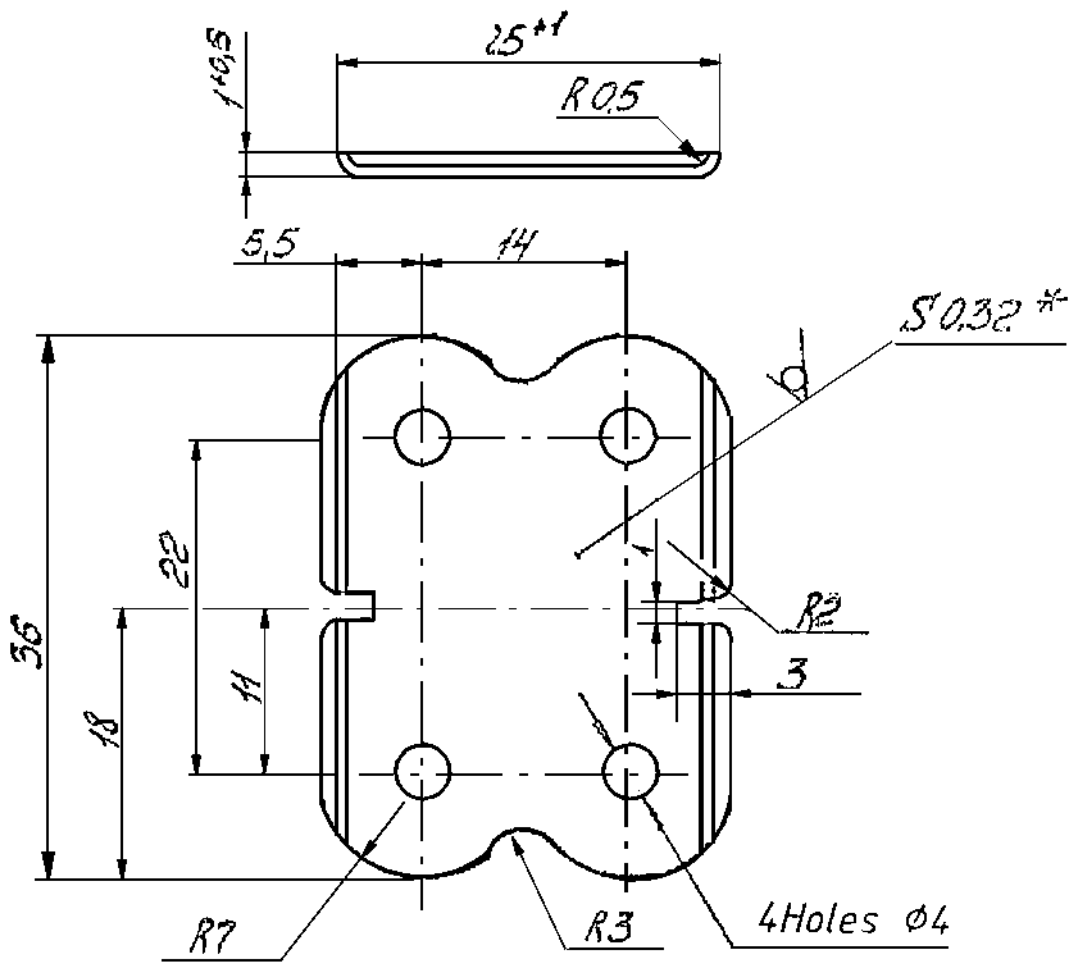
FORMAT	ZONE	REF. No.	DESIGNATION	DESCRIPTION	QTY	REMARKS
				<u>Parts</u>		
11		1	701-85-130	STRAP OF LOOP BELT	1	
				<u>Standard articles</u>		
		4	Ⓐ BUTTON TYPE	Rivet, Steel, Nickle-plated, Kholniten,		
				3X-25 OST 17x-600-81	1	

01009-ICV <i>[Signature]</i>	Ⓐ	REF. No.4, DESCRIPTION "BUTTON TYPE RIVET, STEEL, NICKEL PLATED 3X-25, OST 17X-600-81" WAS "RIVET, STEEL, NICKLE PLATED, KHOLNITEN 3X-25".
DC(D)No. & DATE	ISSUE	AMENDMENTS

APPROVED	<i>[Signature]</i>	701-85-Sb169			
CHECKED		LOOP	WEIGHT	SCALE	
CONTROLLERATE OF QUALITY ASSURANCE (ICV)	0.008		2:1		
	SHT 1		SHTS 1		

701-267-161

R2320/ (✓)



- 1) Alternate material is tin plate No-36 ГГЖР, 40ГГЖР. GOST 17718-72.
- 2) Unspecified limit deviations of dimensions are $\pm 0.5\text{mm}$.
- 3) Dimension marked with * is given for reference.

APPROVED

CHECKED

701-267-161

CONTROLLERATE
OF
QUALITY ASSURANCE
(ICV)

END PIECE

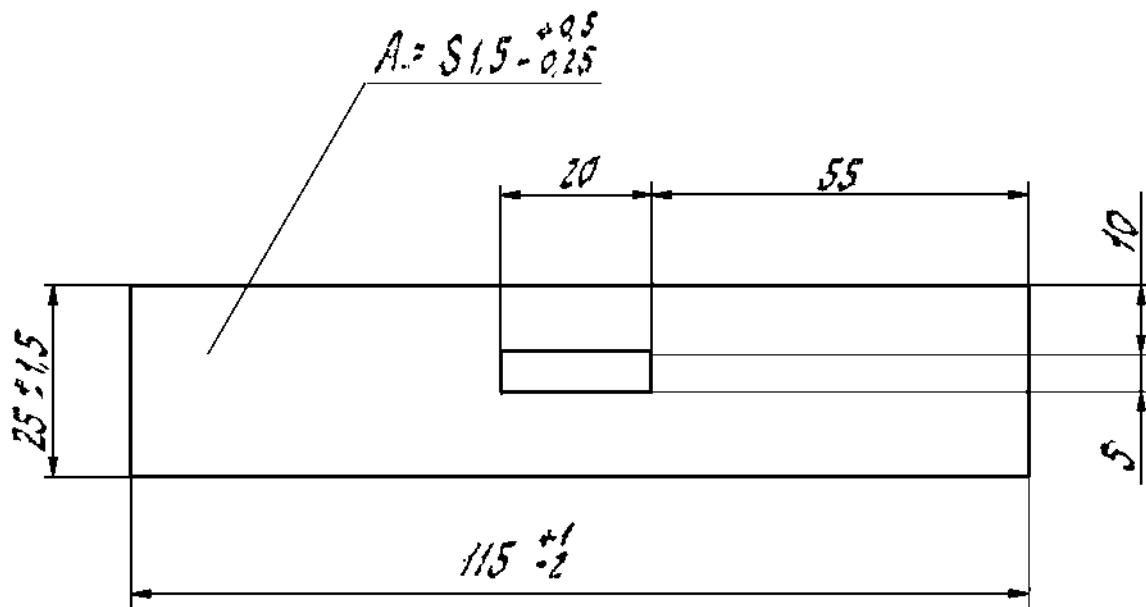
TIN Plate N 32r * P-1
GOST 15580-70

WEIGHT SCALE

0.004 2:1

SHT SHTS

701-267-162



- 1). Alternate material is harness leather of type K GOST 1904-70
- 2). Other requirements are to be as per Technical Specifications Ty 38-105816-75.
- 3). Alternate material is leather GOST 1904-70 in this case the dimension 'A' = 52 ± 0.75

Ⓐ EQ. MATERIAL: - HARNESS LEATHER IS: SB0-73

00749-ICV

Ⓐ

v. Roman
23 DEC 99

EQ. MATERIAL ADDED.

DC(I)No.
& DATE

ISSUE

AMENDMENTS

APPROVED

CHECKED

701-267-162

CONTROLLERATE
OF
QUALITY ASSURANCE
(ICV)

STRAP

WEIGHT SCALE

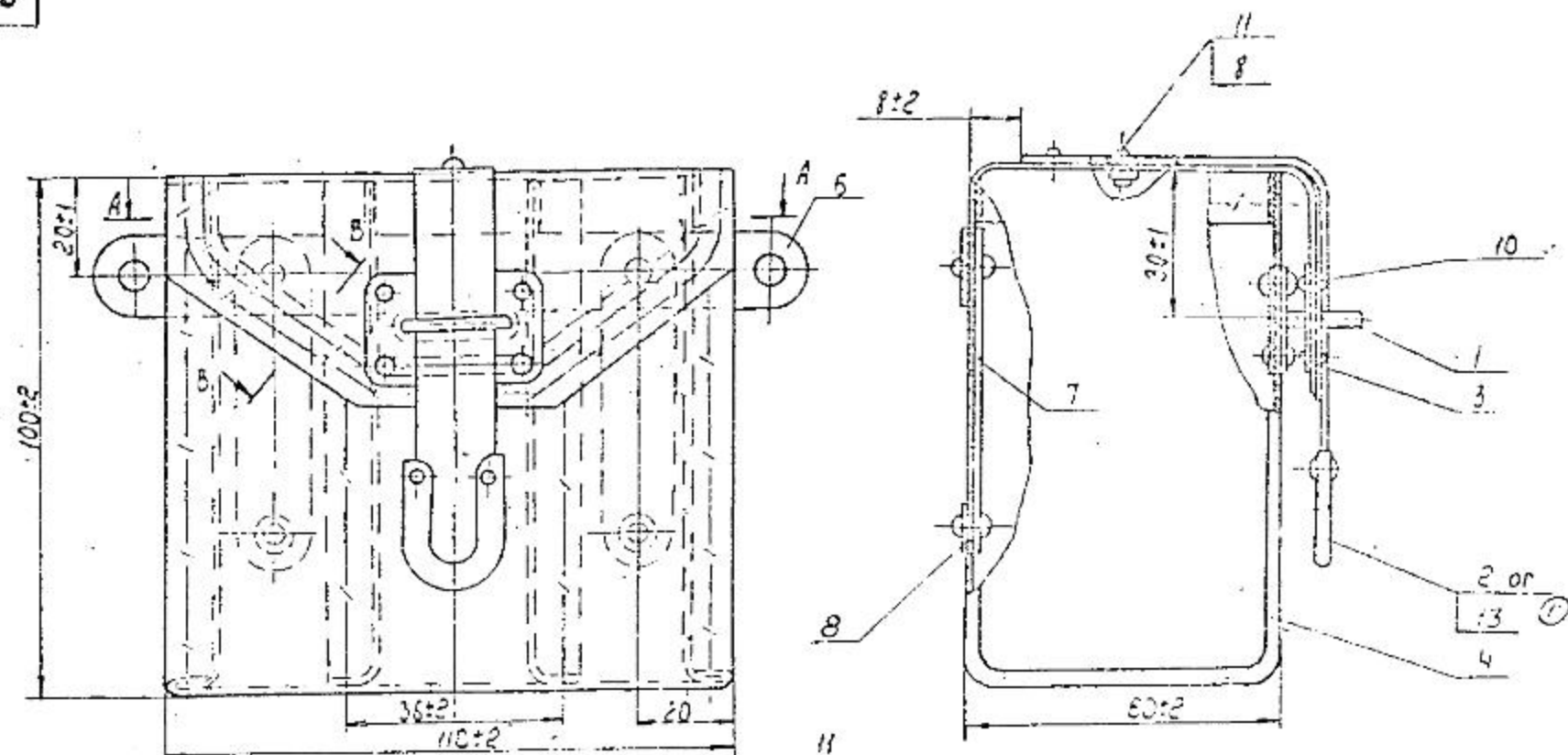
0.005 1:1

SHT SHTS

Hardness Leather
type 1 GOST 1904-70

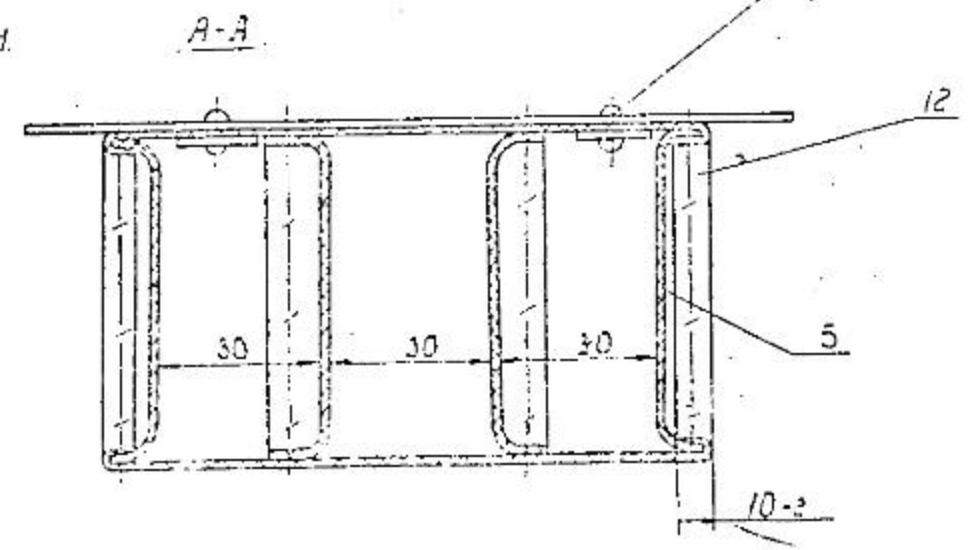
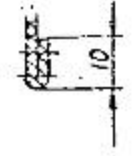
ZONE	NO	DESIGNATION	DESCRIPTION	QTY	REMARKS
			<u>Technical papers</u>		
		730-77-cδ110C5	Assembly drawing		
			<u>Assembly units</u>		
1		730-77-cδ108	Plate	1	
2		730-77-cδ109	Belt		1 piece may be replaced by 77-109 B
13		765-94-cδ364	Belt		1 piece may be replaced by 765-94
			<u>Parts</u>		
3		730-77-18	Plate	3	
4		730-77-23	Body	1	
5		730-77-24	Side member	4	
6		730-77-25	Strap	1	
7		730-77-28	Strap	2	
			<u>Standard items</u>		
8			Washer		
			4.01.019 or 4.02.019		
			GOST 11371-78	6	

APPROVED		730-77-cδ110		
CHECKED				
CONTROLLERATE OF INSPECTION (ICV)	BAG		WEIGHT	SCALE
			SHT 1	SHTS 2
			94 5.8 OF 2.89	



1. Punch holes in leather parts for the rivets as per the holes in metal parts.
2. Thread, Ref.no.12, may be replaced by glossy cotton threads No.1. Black GOST 6309-73.

A-3 Revolved.



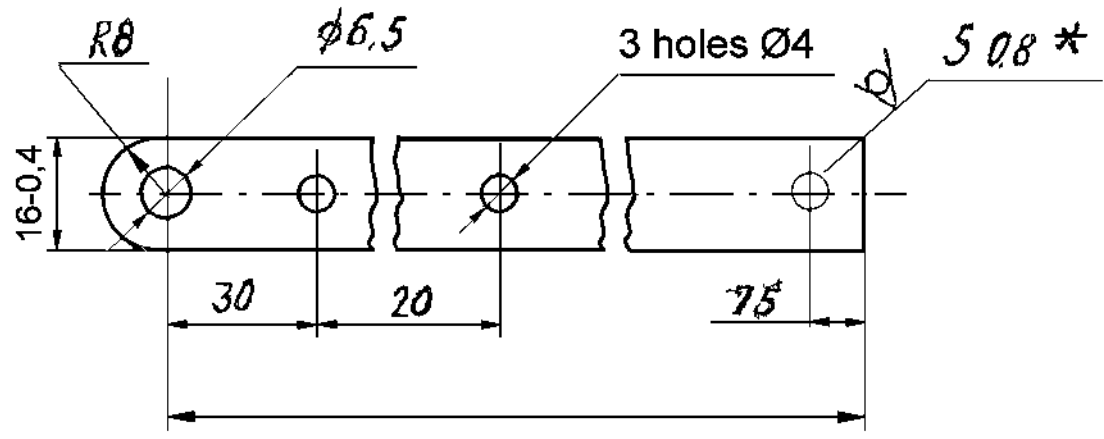
(D83)

APPROVED		730-77-08110 c5	
CHECKED		BAG Assembly Drawing	WEIGHT SCALE
CONTROLLERATE OF INSPECTION (KIC V)			0,125 1:1
		SHT SHTS	
		60 OF 289	

NO	DESIGNATION	DESCRIPTION	QTY	REMARKS
10		Rivet 2x6.37 GOST 10299-80	8	
11		KoVneten-steel rivet, Nickle-plated 3X-25	6	
		<u>Materials</u>		
12		Glazed cotton threads N10, Black, "Special", GOST 6309-73		

APPROVED		730-77-c5110		59 OF 289
CHECKED		BAG	WEIGHT	SCALE
CONTROLLERATE OF INSPECTION (ICV)			SHT 2	SHTS 2
		34	59 OF 289	

730-77-15



1. HRC 40 to 48.
2. Alternate material is steel Y7A, GOST 1435-74.
3. Unspecified limit deviations of dimensions are $\pm 0,5$ mm
4. Coating. zinc-plated, 9 microns thick, chromated.
Remove hydrogen embrittlement.
5. *Dimension is given for reference.

APPROVED *[Signature]*
 CHECKED *[Signature]*
 CONTROLLERATE
 OF
 QUALITY ASSURANCE
 (ICV)

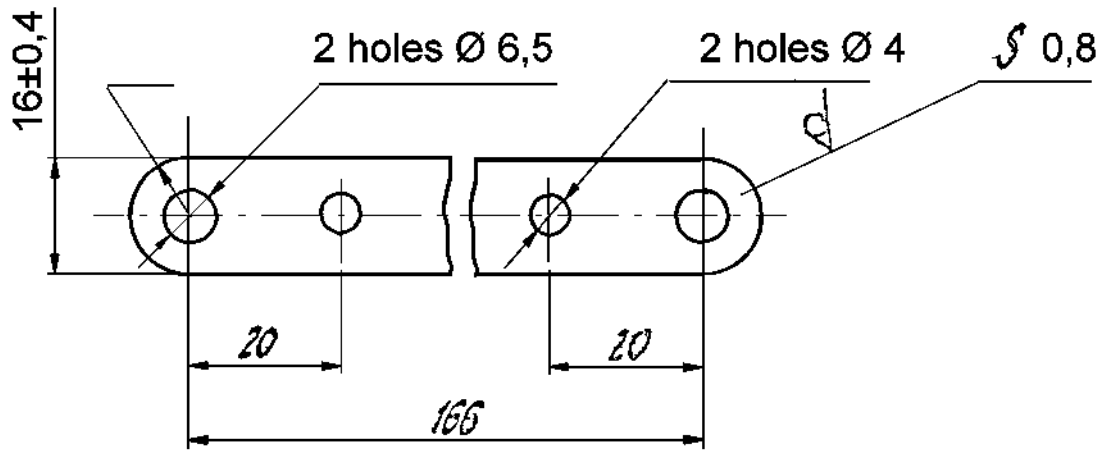
730-77-15

BAND

65 Г-0.8, GOST 2283-79

WEIGHT	SCALE
0.024	1:1
SHT 1	SHTS 1

91-77-032



1. HRC 40 to 48.
 2. Alternate material is steel Y7A GOST 1435-74
 3. Unspecified limit deviations of dimensions are 0,5 mm.
 4. Coating: zinc-plated, 9 microns thick, chromated.
Remove hydrogen embrittlement.
 5. *Dimensions is given for reference.
- Ⓐ EQ. MATERIAL:- Gde 75 C6 TO: IS: 2507-75.

01005-ICV	Ⓐ	EQ. MATERIAL ADDED.
<i>[Signature]</i>		
24 OCT 05		
DC(D)No. & DATE	ISSUE	AMENDMENTS

APPROVED
CHECKED *H.M. Shekh*
CONTROLLERATE
OF
QUALITY ASSURANCE
(ICV)

730-77-16

STRAP

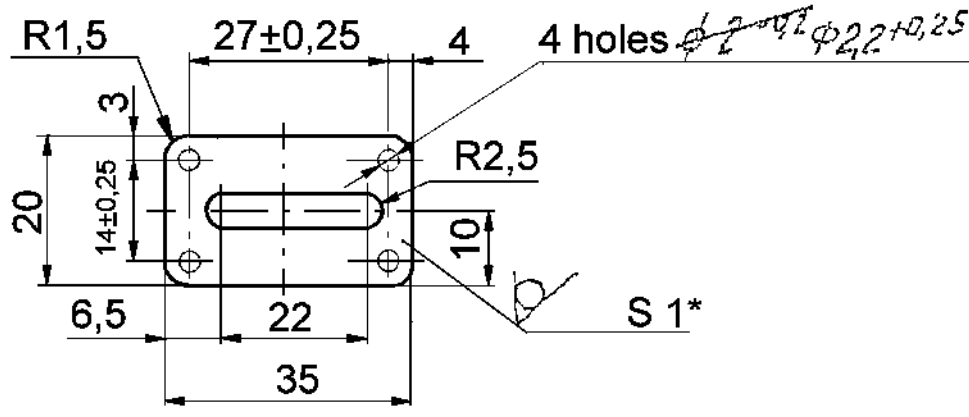
WEIGHT SCALE

0.017 1:1

SHT 1 SHTS 1

BAND 65Г-0.8, GOST 2283-79

81-77-082



1. Alternate material is steel cm2, cm3, cm5, GOST 380-71 and steel 08nc, 10, 15, 20, 25 and 30, GOST 1050-74.
2. Unspecified limit deviations of dimensions are $\pm 0,5$ mm.
3. Coating: zinc-plated, 24 microns thick, chromated. Remove hydrogen embrittlement.
4. *Dimension. is given for reference.

5. Equivalent material is DD or D to IS:1079 or IS:513.

00330-ICV <i>hney</i> 23 JUN 92 DC(D)No. & DATE	Ⓐ	NOTE FOR EQUIVALENT MATERIAL ADDED.
ISSUE		AMENDMENTS

APPROVED
CHECKED
H.M. Sh... M.V...

730-77-18

CONTROLLERATE
OF
QUALITY ASSURANCE
(ICV)

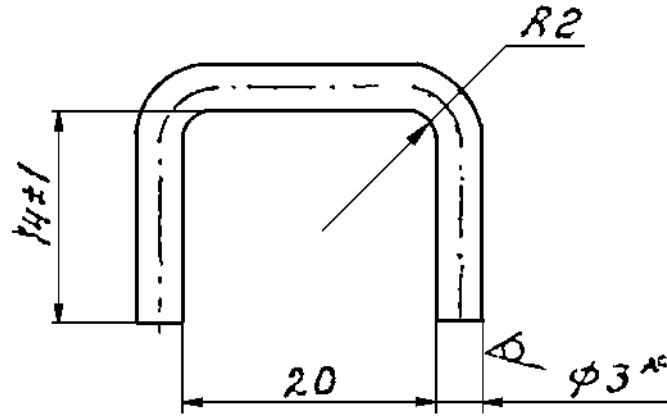
PLATE

WEIGHT	SCALE
0.005	1:1
SHT 1	SHTS 1

SHEET 1,0 GOST 19903-74
3-III-cm 3kn GOST 16523-70

730-77-19

Rz320
√(V)



1. Alternate material is wire, GOST 17305-71, made from steel 08KП 10, 15, or КС, GOST 792-67.
2. Unspecified limit deviations of dimensions are ±0,5mm.
3. * Dimension is given for reference.

APPROVED

M VASU

730-77-19

CHECKED

[Signature]

CONTROLLERATE
OF
QUALITY ASSURANCE
(ICV)

CLAMP

WEIGHT SCALE

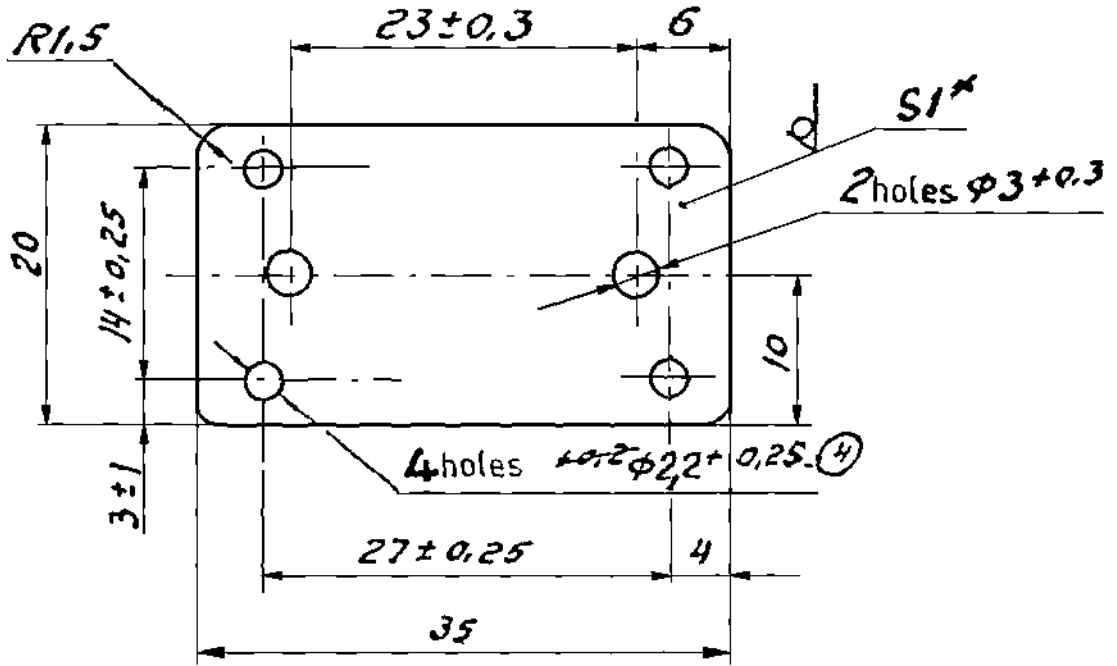
0.0029 2:1

SHT 1 SHTS 1

WIRE 3.0-C-I, GOST 3282-74

730-77-20

R₂₃₂₀ / √(√)



1. Alternate material is steel Cm2, Cm3, Cm5, GOST 380-71, and steel 08nc 10,15,20,25,30 GOST 1050-74.
2. Unspecified limit deviations of dimensions are ±0,5mm.
3. * Dimension is given for reference.

Ⓐ 4. Equivalent Material is DD or D to IS:1079 or IS:513

00330-ICV <i>Arav</i> 23 JUN 92 DC(INo. & DATE	Ⓐ	EQ. MATERIAL ADDED.
ISSUE		AMENDMENTS

APPROVED *M VASU*
CHECKED *[Signature]*

730-77-20

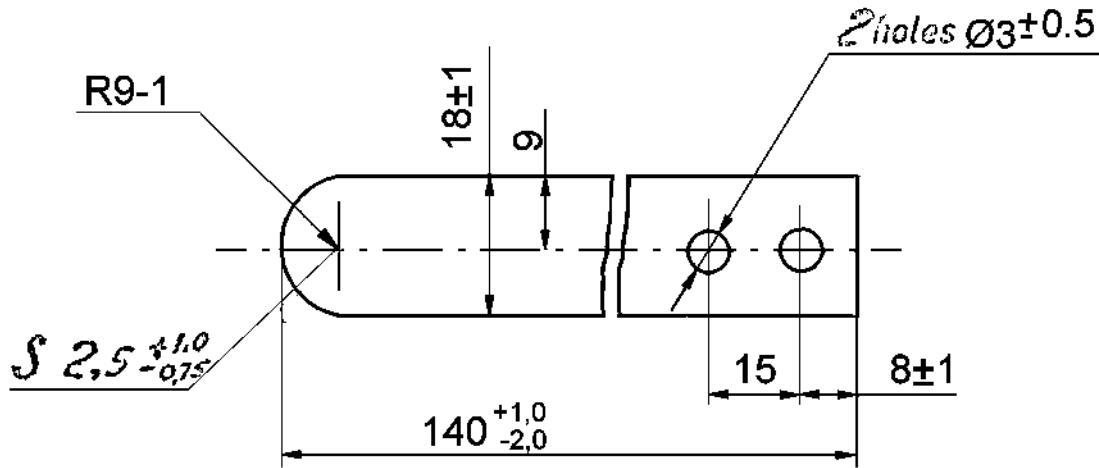
CONTROLLERATE
OF
QUALITY ASSURANCE
(ICV)

PLATE

WEIGHT	SCALE
0.0055	2:1
SHT 1	SHTS 1

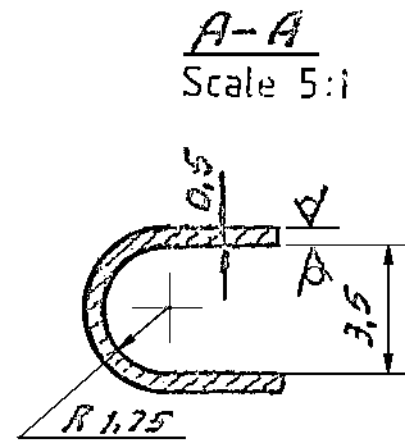
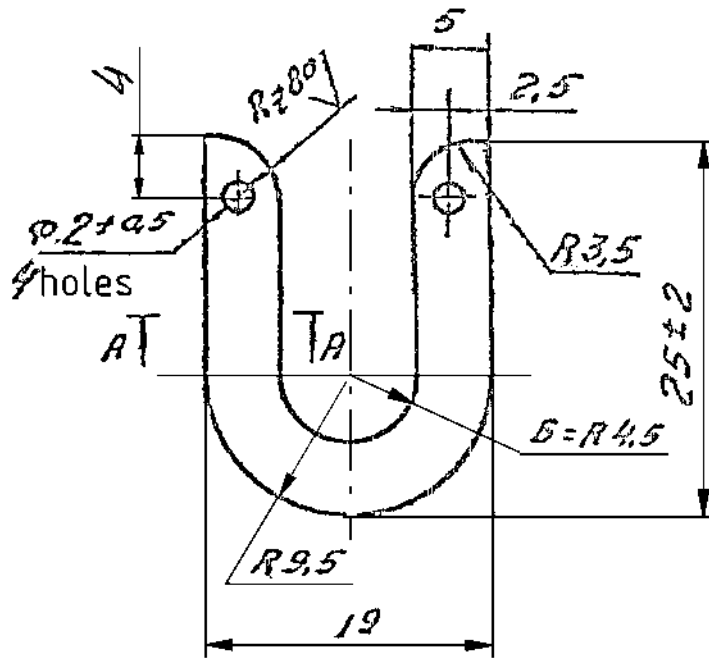
SHEET 1,0 GOST 19903-74
3-III-cm3kn, GOST 16523-70

730-77-21


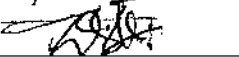


1. Alternate material is harness leather II, GOST 1904-70, and industrial leather, light, GOST 20836-75
2. Pigskin leather is not allowed.
3. Other requirements are as per Technical specifications TY 38-105816-75.

APPROVED		730-77-21		
CHECKED				
CONTROLLERATE OF QUALITY ASSURANCE (ICV)	BELT		WEIGHT	SCALE
			0.007	1:1
		SHT 1 SHTS 1		
	HARNESS LEATHER GOST 1904-70			



1. Alternate material is steel Cm2, Cm3, GOST 380-71.
2. Unspecified limit deviations of dimensions are ±0,5mm.
3. Coating: Zinc-plated, 24 microns thick, chromated.
Remove hydrogen embrittlement.
4. Wrinkles are allowed on dimension δ of folds.
5. * Dimension is given for reference.

APPROVED 
 CHECKED 

730-77-22

CONTROLLERATE
 OF
 QUALITY ASSURANCE
 (ICV)

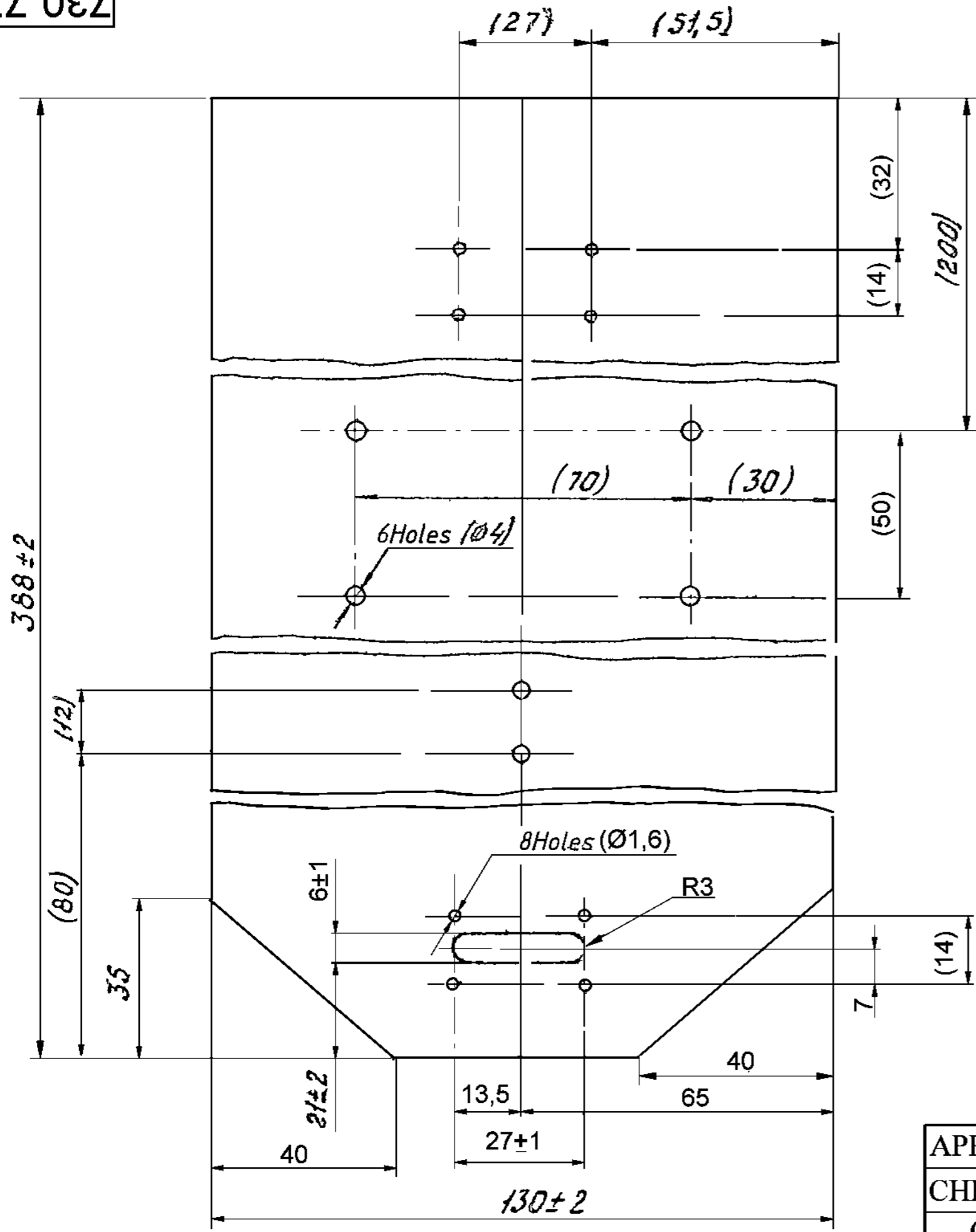
END PIECE

WEIGHT	SCALE
--------	-------

0.003	1:1
-------	-----

SHT 1	SHTS 1
-------	--------

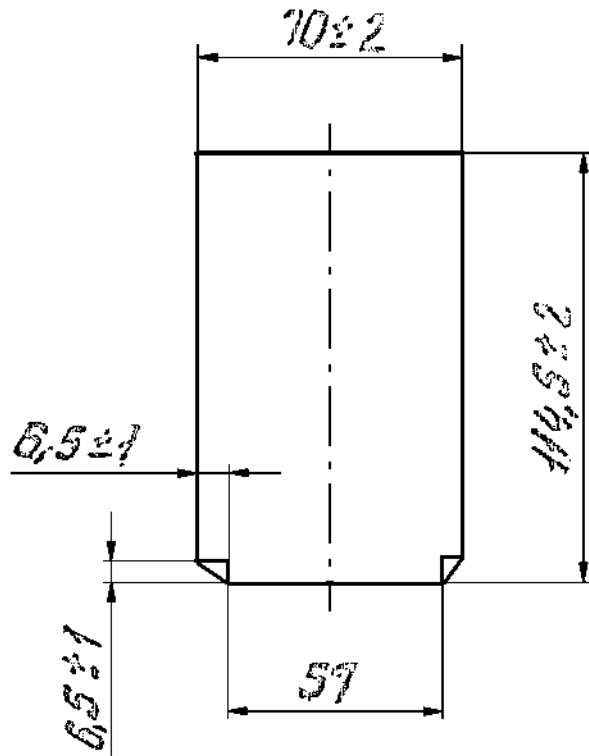
SHEET A0.5, GOST 19904-74
 II B/ -0.8kn GOST 9045-80



1. Dimensions given in brackets are after assembly.
2. Pierce the holes as per metallic parts.

APPROVED	<i>[Signature]</i>	730-77-23			
CHECKED	<i>[Signature]</i>				
CONTROLLERATE OF QUALITY ASSURANCE (ICV)		BODY		WEIGHT	SCALE
				0,058	1:1
		SHT 1	SHTS 1		
		VINYLIS LEATHER-T, BROWN OR BLACK, TYPE BO-1, GRADE I WITH FABRIC BASE, GOST- 23561-78			

730-77-24

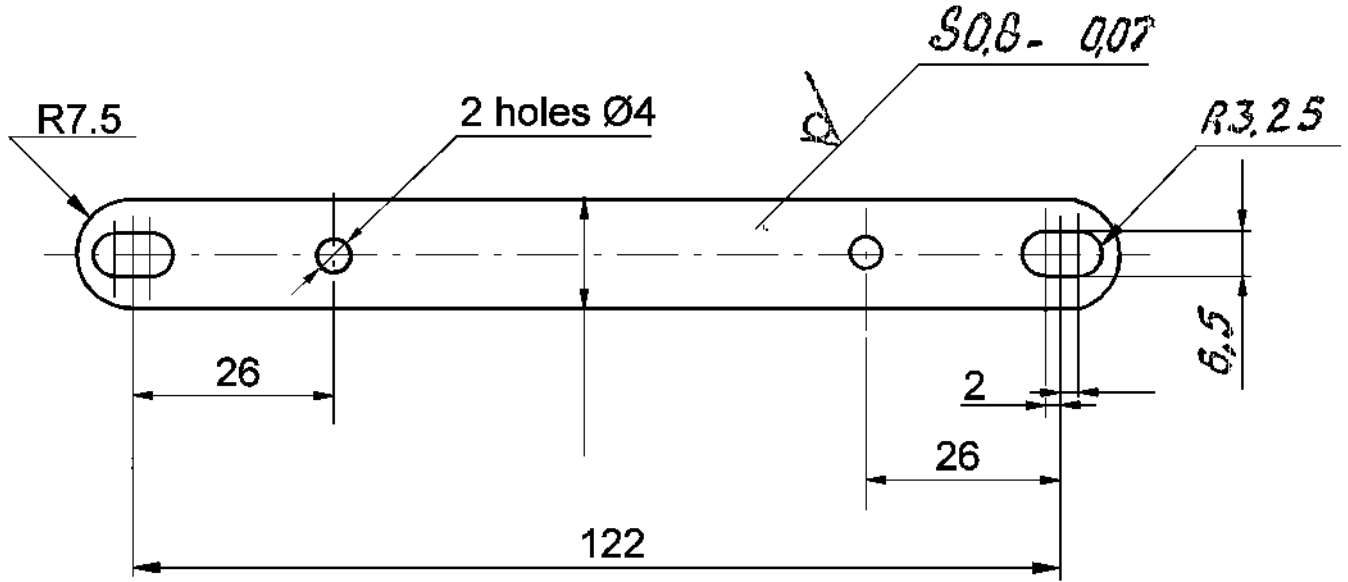


1. Part may be made as per dash do line.

Material: Leather vinylos kozha-T type
 BO-1, brown or black, mole skin,
 grade, I, GOST 23367-78.

APPROVED		730-77-24		
CHECKED				
CONTROLLERATE OF QUALITY ASSURANCE (ICV)	SIDE MEMBER		WEIGHT	SCALE
			0.010	1:2
		SHT 1	SHTS 1	

730-77-25



1. HRC 40 to 48.
2. Alternate material is steel Y7A, GOST 1435-74.
3. Unspecified limit deviations of dimensions are $\pm 0,5\text{mm}$.
4. Coating: Zinc-plated, 9 microns thick, chromated.
Remove hydrogen embritment.

Ⓐ EQ. MATERIAL:- Gde 75C6 TO IS:2507-75.

01005-ICV	Ⓐ	EQ. MATERIAL ADDED.
<i>[Signature]</i> 24 OCT 05		
DC(I)No. & DATE	ISSUE	AMENDMENTS

APPROVED *[Signature]*
 CHECKED *[Signature]*
 CONTROLLERATE
 OF
 QUALITY ASSURANCE
 (ICV)

730-77-25

STRAP

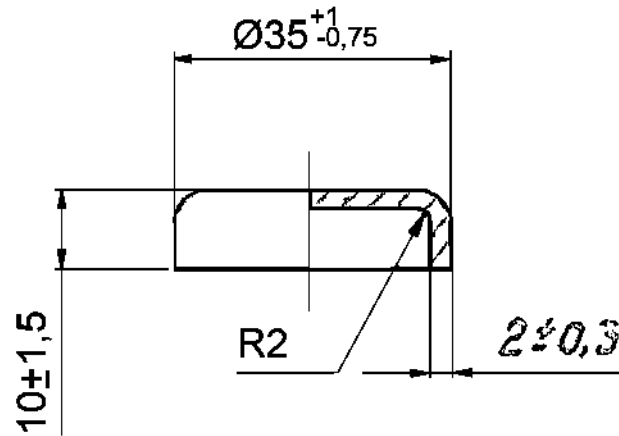
65Г, GOST 14959-79

WEIGHT SCALE

0.012 1:1

SHT 1 SHTS 1

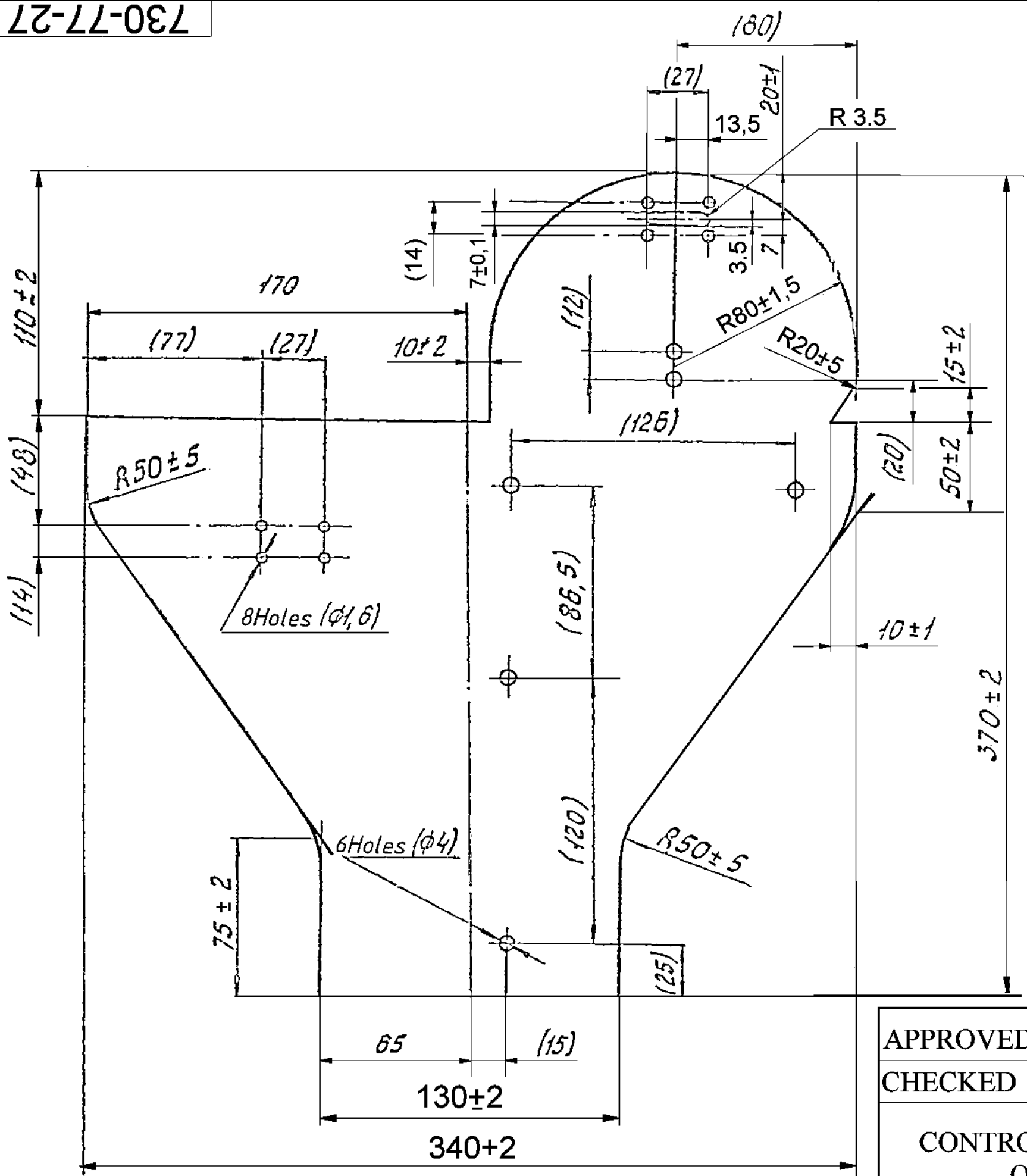
730-77-26





1. Alternate material is harness leather, type K, and russian leather, harness, GOST 1904-70.
2. Use of pigskin leather is not allowed.
3. Other requirements are as per Technical specifications TY 38-105816-75.
4. Dimension R_2 is provided by die, it is not subject to checking.

APPROVED		730-77-26		
CHECKED				
CONTROLLERATE OF QUALITY ASSURANCE (ICV)	BOTTOM		WEIGHT	SCALE
			0.006	1:1
		SHT 1	SHTS 1	
		HARNESS LEATHER TYPE A GOST 1904-70		

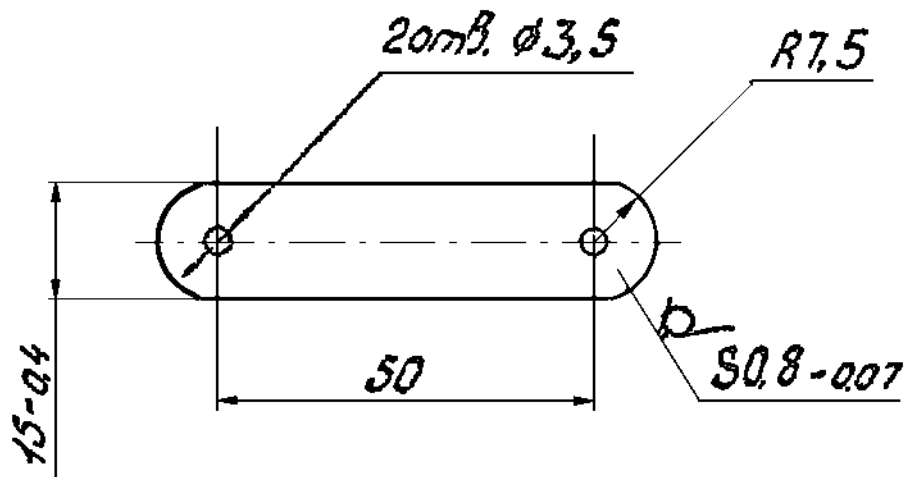
730-77-27



1. Dimensions given in brackets are after assembly.
2. Pierce the holes as per metallic parts.

APPROVED		730-77-27	
CHECKED			
CONTROLLERATE OF QUALITY ASSURANCE (ICV)		BODY	
		WEIGHT SCALE	
		0.070 1:2	
		SHT 1	SHTS 1
		Leather vinyl iskozha-T, type B0-1 brown or black, moleskin grade I, GOST 23367-78.	

730-77-28



1. HRC 40 to 48 HV474 to 380 ($\phi 2,9$ to $\phi 3,2$)
2. Alternate material is steel Y7A, GOST 1435-74.
3. Unspecified limit deviations of dimensions are $\pm 0,5$ mm.
4. Coating: zinc-plated, 9 microns thick, chromated
Remove hydrogen embrittlement.

APPROVED

CHECKED

HM Shekh

730-77-28

CONTROLLERATE
OF
QUALITY ASSURANCE
(ICV)

STRAP

65Г, GOST 14959-79

WEIGHT

SCALE

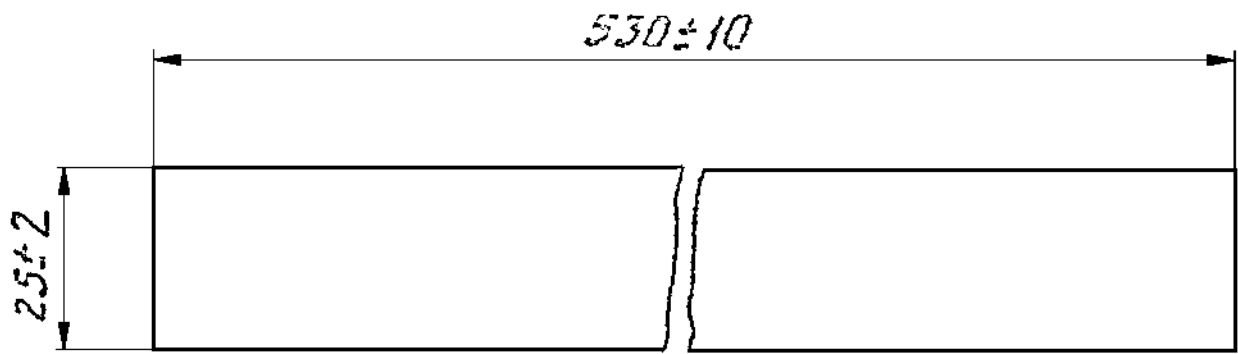
0.005

1:1

SHT 1

SHTS 1

730-77-39



Material: Leather vinyl rskozha-T, type
B0-1 brown or black, moleskin
grade I, GOST 23367-78.

APPROVED

[Signature]
H.M. Shch. Kh.

730-77-39

CHECKED

CONTROLLERATE
OF
QUALITY ASSURANCE
(ICV)

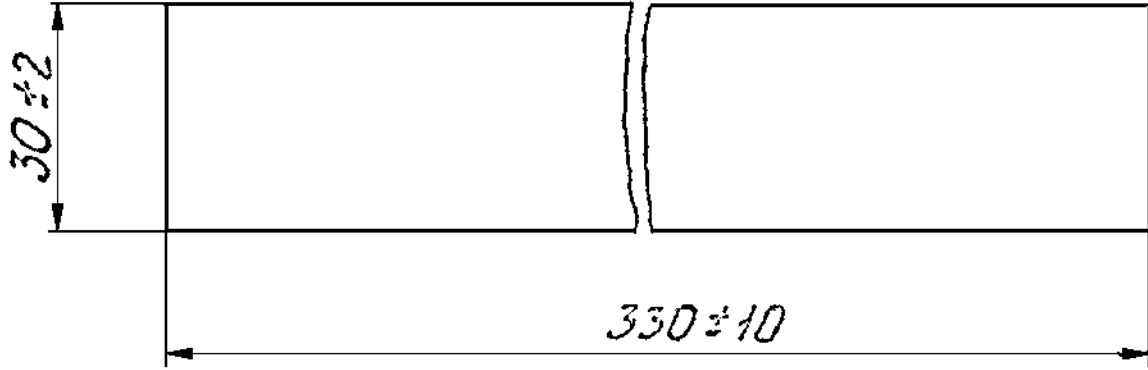
BAND

WEIGHT SCALE

0.009 1:1

SHT 1 SHTS 1

730-77-40



Material: Leather vinyal iskozha-T, type B0-1,
brown or black, moleskin, grade I
GOST 23367-78.

APPROVED

[Signature]
H.M. Shch...

730-77-40

CHECKED

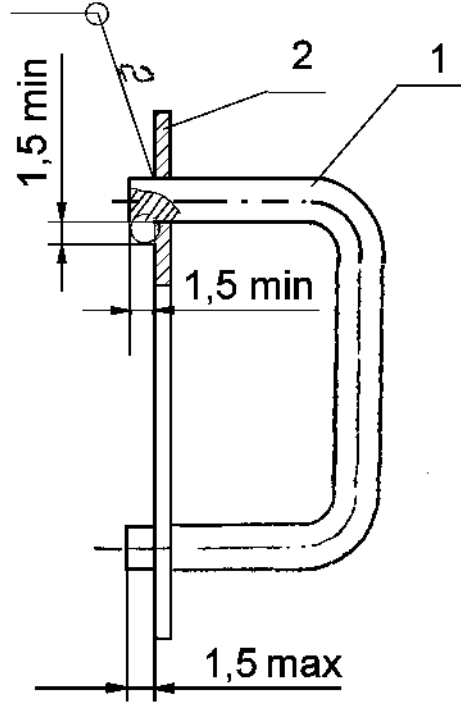
CONTROLLERATE
OF
QUALITY ASSURANCE
(ICV)

BAND

WEIGHT SCALE

0.007 1:1

SHT 1 SHTS 1



- 1. Coating: Zinc plated, 24 microns thick. Remove hydrogen embrittlement.
- 2. Gas welding.

Format	Zone	Ref.No.	Designation	Description	Qty
				<u>PARTS</u>	
11	1		730-77-19	CLAMP	1
11	2		730-77-20	PLATE	1

APPROVED
CHECKED

M. V. S.
H. M. Sh. Ch. Kh.

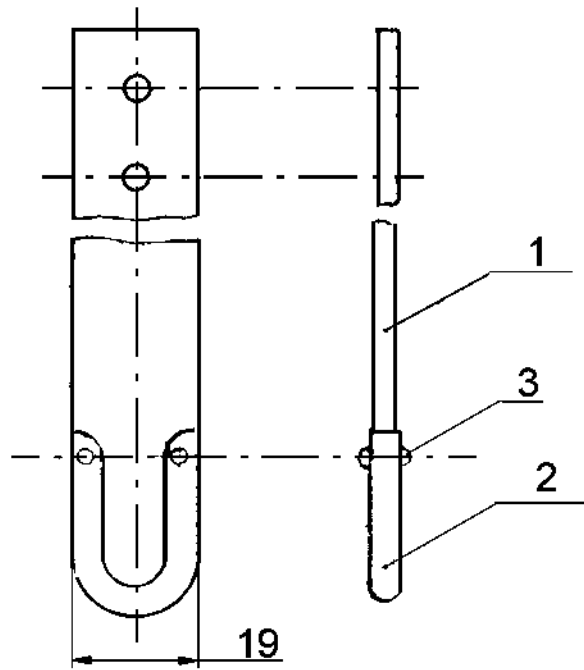
730-77-Sb108

CONTROLLERATE
OF
QUALITY ASSURANCE
(ICV)

PLATE

	WEIGHT	SCALE
	0.0087	2:1
SHT 1	SHTS 1	

730-77-Sb109



1). Belt may be cut, as per the internal dimensions of the Tip.

Ref. No.	Designation	Description	Qty	Remarks
		<u>Parts.</u>		
1	730-77-21	Belt	1	
2	730-77-22	End piece	1	
		<u>Standard articles.</u>		
3		Rivet 2x6.37		
		GOST 10299-80	2	

APPROVED

CHECKED

[Handwritten signature]
HM S. C. KH

730-77-Sb109

CONTROLLERATE
OF
QUALITY ASSURANCE
(ICV)

BELT

WEIGHT

SCALE

0.01

1:1

SHT 1

SHTS 1

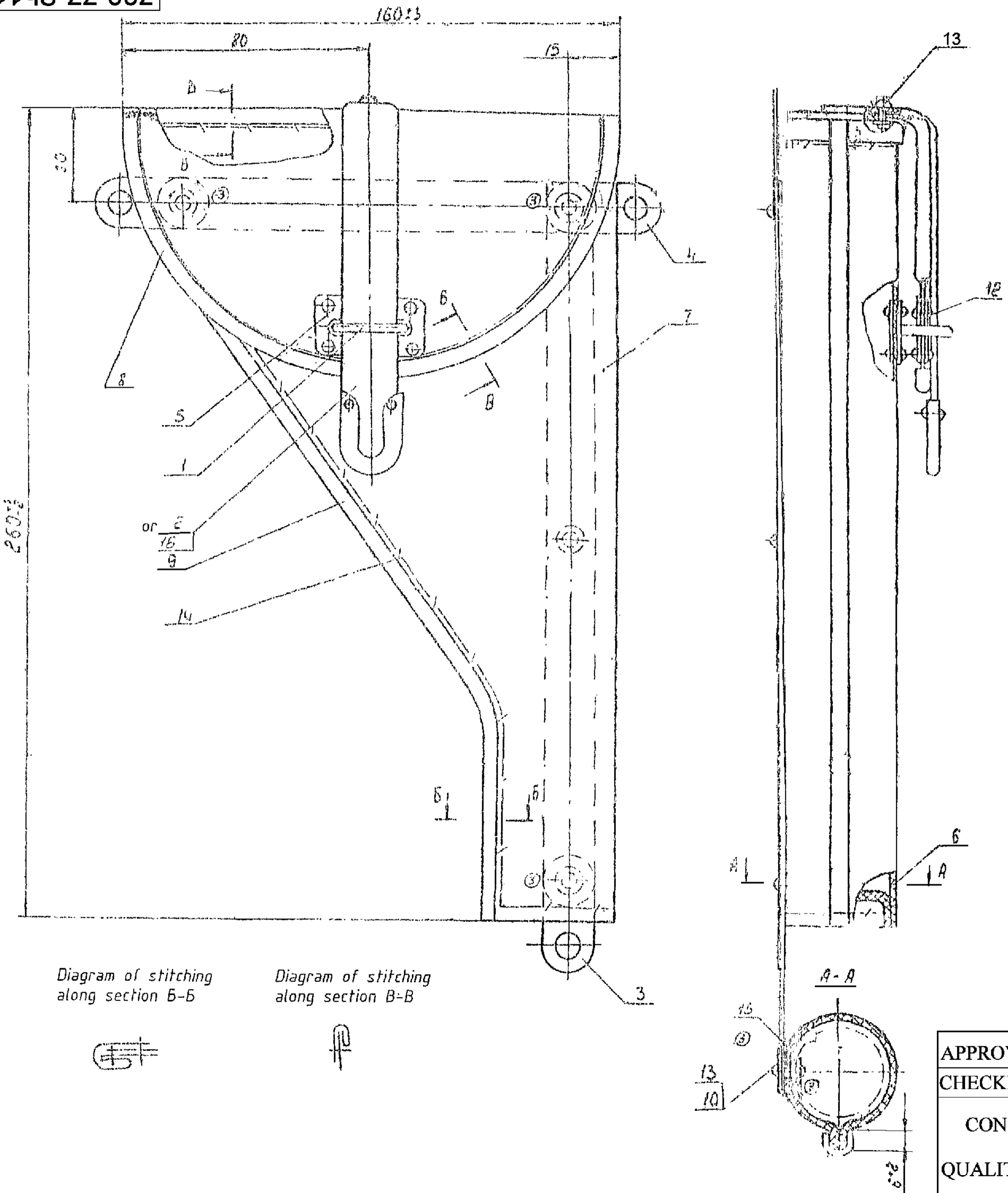
REF NO	ZONE	DESIGNATION	DESCRIPTION	QTY	REMARKS
			<u>Technical papers</u>		
		730-77-cδ111CB	Assembly drawing		
					ZONE REF NO
			<u>Assembly units</u>		
		1 730-77-cδ108	Plate	1	
		2 730-77-cδ109	Belt		1 PIECE ALTE RNATE REF 16
		16 765-94-cδ364	Belt		1 PIECE ALTE RNATE REF 2
			<u>Parts</u>		
		3 730-77-15	Strap	1	
		4 730-77-16	Strap	1	
		5 730-77-18	Plate	3	
		6 730-77-26	Bottom	1	
		7 730-77-27	Body	1	
		8 730-77-39	Band	1	
		9 730-77-40	Band	1	
		15 765-94-732	strap	3	
			<u>Standard items</u>		
		10	Washer		
			4.01.019 or 4.02.019		
			GOST 11371-78.		

APPROVED _____
CHECKED _____
CONTROLLERATE
OF
QUALITY ASSURANCE
(ICV)

730-77-Sb111

CASING

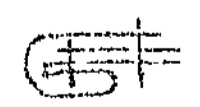
	WEIGHT	SCALE
SHT 1	SHTS 2	



1. Punch holes for rivets as per the holes in the metallic parts.
2. Folded bands are allowed on the internal side of the casing.
3. Unspecified limit deviations of dimensions are ± 1 mm.
4. Bottom, Ref.no.6, may be sewed to the body, Ref.no.7, with glazed cotton thread No. 00, Black GOST 6309-80.

Diagram of stitching along section B-B

Diagram of stitching along section B-B



APPROVED	<i>M. VASU</i>
CHECKED	<i>A. ...</i>
CONTROLLERATE OF QUALITY ASSURANCE (ICV)	

730-77-Sb111Sb			
CASING (ASSEMBLY DRAWING)	WEIGHT	SCALE	
	0.35	1:1	
	SHT 1	SHTS 1	

765-94-Sb301Sb

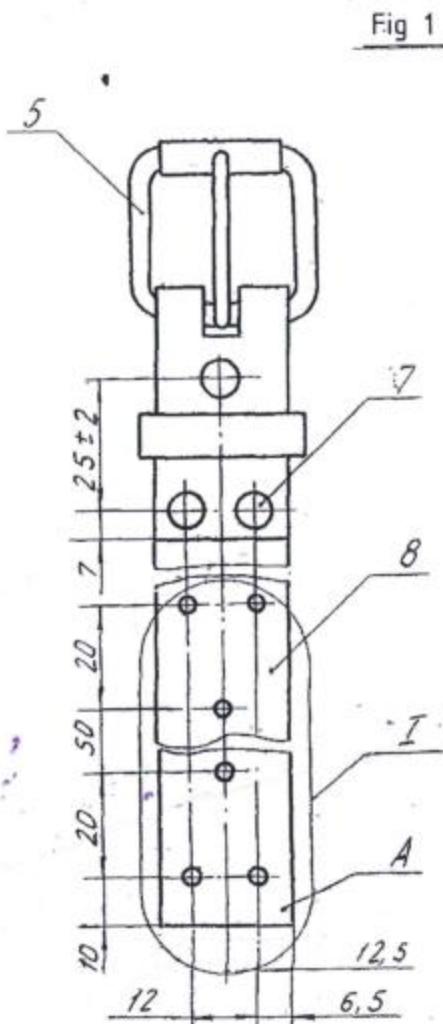
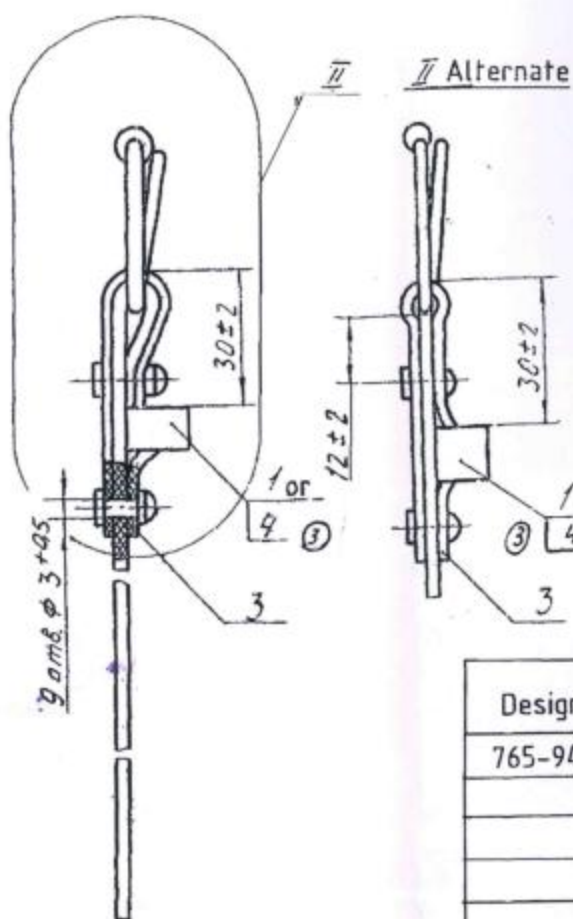


Fig 1



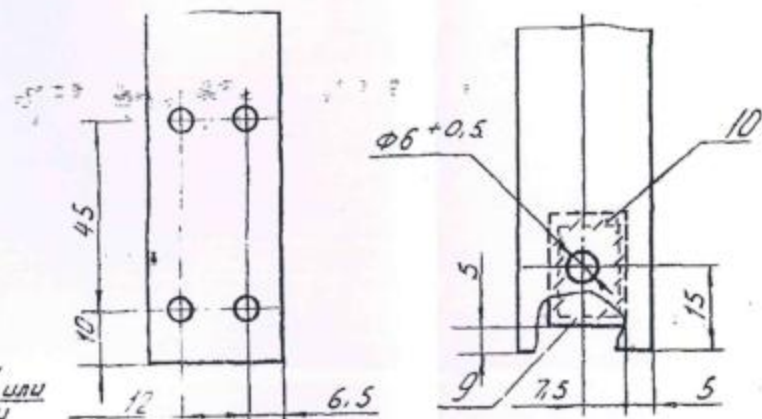
II Alternate

Fig 2

for details see fig.1

Fig 3

for details see fig 1



97
94

Designation	Fig.	Mass.
765-94cb301C5	1	0.034
01	2	0.032
02	2	0.031
03	2	0.034
04	1	0.045
05	3	0.021
06	2	0.028

ISSUE	AMENDMENTS
01130-ICV 30-10-2013 01019-ICV 24-04-2006 01009-ICV 18-11-2005	<p>(C) MATERIAL CHANGED FOR BUCKLE NO.P-10-08 USED ON STRAP WEBBING DRG. NO.765-94-CL301 FROM "MILD STEEL" TO STAINLESS STEEL Gr. AISI-316 IN BMP II</p> <p>(B) DS CAT PART NO. LV2/ICV 5330394943 ADDED AND NOMENCLATURE "BELT" AMENDED AS "STRAP WEBBING"</p> <p>(A) Ref. No. 7 DESCRIPTION BUTTON TYPE RIVET STEEL NICKEL- PLATED 3 X 25 OCT 17-800-81 WAS RIVET KHOLNITEN, STEEL NICKEL- PLATED 3 X 25 OCT 17-800-76</p>

1. Unspecified limit deviations of dimensions are $\pm 1\text{mm}$
2. Moistened end A over length of 10mm with bakelite varnish ЛБс-1, GOST 901-78 and allow it to dry.
3. Alternate material is double layered tape without packing GOST 16996-71.
4. Alternate II refers to the case while using gasket Ref.no,3 made from harness leather GOST 1904-70, thickness at least 1,75mm.

APPROVED		765-94-Sb301Sb	DS CAT PART No. (B) LV2/ICV 5340-017078	
CHECKED			WEIGHT	SCALE
CONTROLLER OF QUALITY ASSURANCE (ICV)		STRAP WEBBING BELT (B) (ASSEMBLY DRAWING)	SEE TABLE	1:1
			SHT 1	SHTS 1

