

ITEM NO.	ITEM	QUANTITY
01.	SLEEVE 260mm	12 NOS.
02.	FUNNEL	1 NO.
03.	CENTRE BRICK	1 NO.
04.	RUNNER END BR. 280mm	4 NOS.
05.	THROUGH RUNNER BR. 240mm	24 NOS.
06.	SLEEVE 130mm	1 NO.

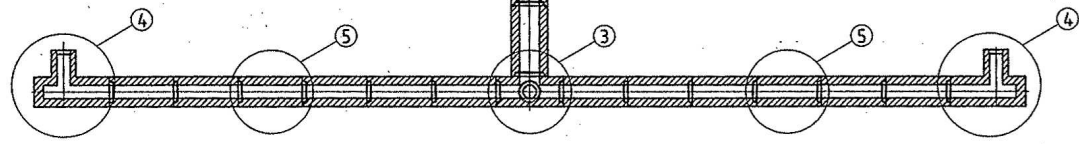
MATERIAL SPECN.	
Al ₂ O ₃	= 74 % (Min.)
Fe ₂ O ₃	= 1.5 % (Max.)
TiO ₂	= 1.2 % (Max.)
PCE OC	= +36 (Min.)
A.P.	= 24 % (Max.)
B.D.	= 2.5 gm/cc (Min.)
CCS	= 600 Kg/cm ² (Min.)
PLC at 1500 deg. C for 2 hrs.	= +0.8 % (Max.)



UN CONTROLLED

NOTE:
 1. SLEEVE 260mm, SLEEVE 130mm & CENTRE BRICKS 10% EXTRA (ROUNDED UP TO NEXT HIGHER DIGIT) TO BE SUPPLIED.
 2. THERE SHOULD BE NO EROSION OF BRICKS & STICKING OF RUNNER & RISER IS NOT ACCEPTABLE.

02.06.15
 AWM/SMR
 HOS/SMR



ITEM NO.	DESCRIPTION	NO. OFF	MATERIAL	HARDNESS	REMARKS
AMENDMENTS					
INDEX					
	4-WAY 4 MOULD BOTTOM POURING SET FOR 20TON EAF				
	(BASED ON REF. SUPPLIED SKETCH OF RAJ CERAMICS, RANCHI)				
	METAL & STEEL FACTORY, ISHAPORE				

SCALE	DRAWN	DATE	NAME
1:20	TRACED	02.06.2015	S.K.Pramanik
	CHECKED		
	APPROVED		
	HOS/DO		WM/QC