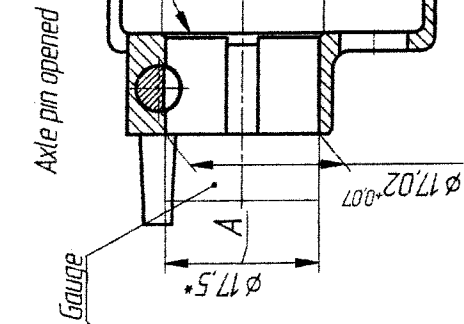
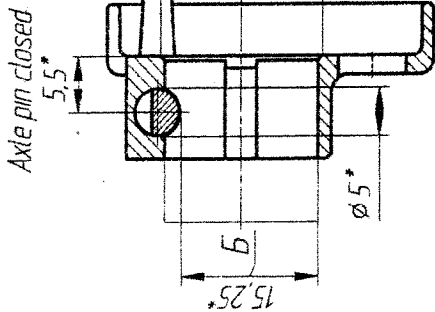


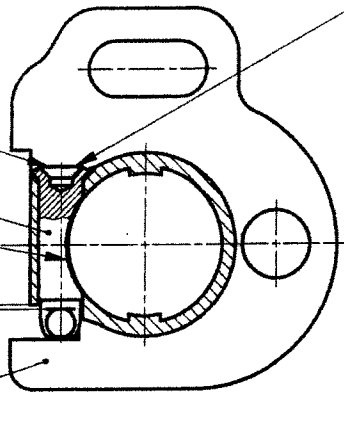
SK-6545/TE

Clearance between part pos. 1 and part pos. 2 is allowed not greater than 0,8 mm



Depression of part pos. 2 relative to opening is allowed up to 0,3 mm

When expanding part pos. 2, minor tears are allowed according to control sample



Expand ensuring free rotation of part pos. 2
Expansion strength to be not less than 245,3 N (25 kgf)

- 1 * Dimensions for gauge.
- 2 When gauge collar stops against ring pos. 1, axle pin pos. 2 should be able to close. Minor friction of axle pin on gauge with dimensions b, that can be eliminated by hand, is allowed.
- 3 When axle pin is open, gauge with dimension A should pass freely through opening of part pos. 1.
- 4 Stamp according to 6045-1C0TY/E2.

part 1
HSS / MMMS

13/10/23

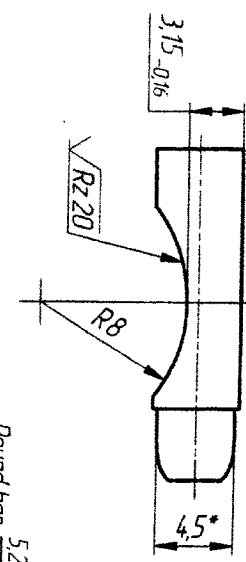
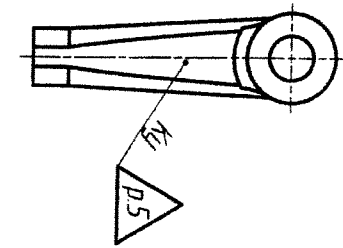
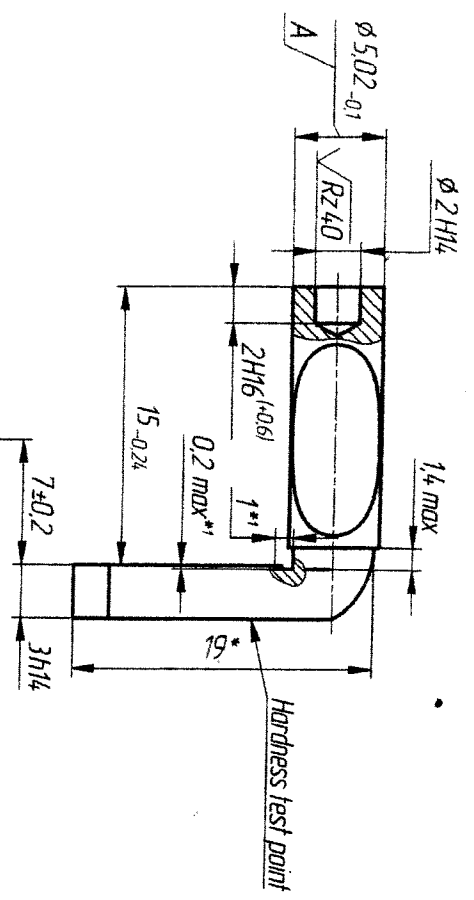
st

Weight: 29 g	
DRAWN	SEEN BY (CHECKED)
DATE	22/09/2023
APPROVED	
DRG. NO.	HDS/DDG
SK-6545/TE	
SCALE	1 OF 1
NTS	
SMALL ARMS FACTORY	
KANPUR	

7.62x39mm AR-SAF

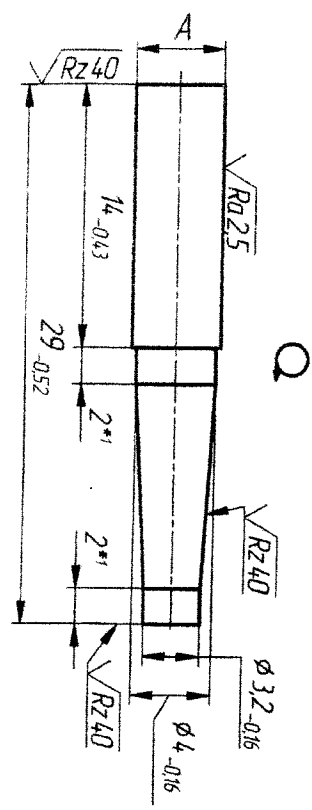
Fore-end ring assembly

Assembly drawing



Round bar
5.2-4 GOST 7417-75
40-8 GOST 1051-73

- 1 330. 38.5 HRC
- 2 * Reference dimensions
- 3 * Dimensions to be ensured by tool
- 4 Coating is Chem. Phos. chr. with oiling.
- 5 Stamp according to 614.5-1 CDTY/E2. It is allowed to stamp only parts delivered within SPTA



7.62x39mm AR-SAF		DRAWN		SEEN BY		CHECKED	
Axle pin		DATE		22/09/2023		APPROVED	
SMALL ARMS FACTORY		DRG. NO.		SK-6544/TE		H05/200	
KANPUR		SHT.		1		OF 1	
SCALE		N.T.S.					

Weight: 2.7 g

12/10/23

Kos/mur

