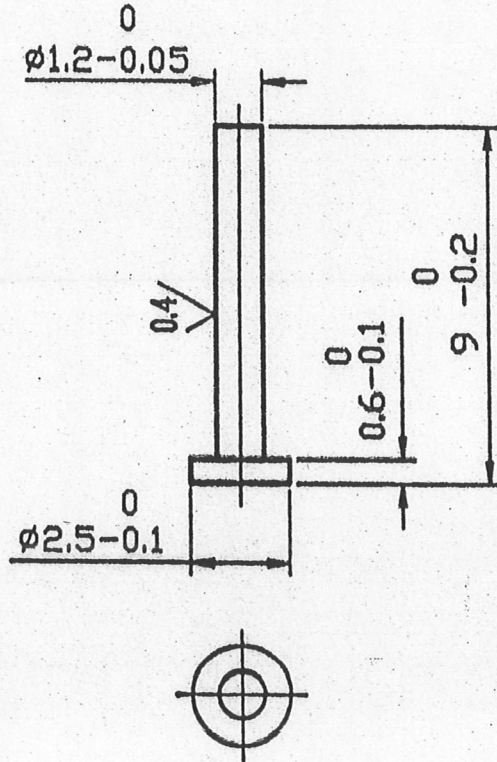


DRG. No. 9102 010 013 010 011 006 00DB

GEN. TOL. MEDIUM / COARSE / FINE CLASS TO IS:2102

DRAWING CONVENTION CONFORM TO INDIAN STD. DIMNS IN mm UNLESS OTHERWISE STATED.



NOTES:

- 1) BURRS / SHARP CORNERS & PIP NOT PERMITTED.
- 2) DIMNS. APPLY AFTER PLATING.

1	9-12-99	MATL. GRADE 304 S31 WAS			<i>D.m.P.</i>	<i>Am</i>
		304/303 S21 MATL. IS: 6603-1972				
		04 Cr 18 Ni 10 ADDED.				
R No.	DATE	AUTHORITY	BRIEF RECORD	ZONE	CD	GO
DRN.	SABLE	CHD. <i>Am</i>	MATERIAL: STAINLESS STEEL TO SPEC BS 970 Pt I. -1983 Gd 304 S31 OR IS: 6603-1972 04 Cr 18 Ni 10		SIGN	
APPD, DATE: 15/6/98	FOR DIRECTOR	<i>Am</i>	ALT. MATL:- STEEL TO SPEC. IS: 280-1962 HALFHARD CONDITION.			
SEALED DATE:			PROTECTIVE FINISH: TO BE NICKEL PLATED TO SERVICE Gd.No.3 TO SPEC. IS: 1068-1985. OR ELECTROLESS PLATING WITH BOND STRENGTH MIN. 2800 Kg/Cm. ²			
SCALE: 5:1	EST. MASS: 0.09 g		TITLE: <u>DETENT SRD</u>			
DESIGN AUTHORITY: ARDE						
DRG. No.	9102 010 013 010 011 006 00DB					
PART No.		DS CAT No.		AHSP		