

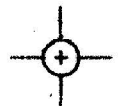
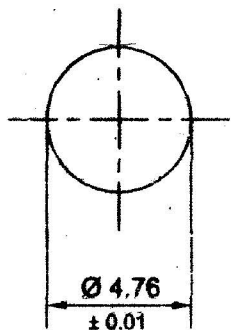
839: X0

PART NO.

DRG. CONVENTIONS CONFORM TO IS: 696

DIMENSIONS ARE IN mm.

DCI 25478 - A.



ACTUAL SIZE

NOTES :-

- a) BALLS MANUFACTURED FROM MATERIALS AT (i) DO NOT REQUIRE ANY ELECTROPLATING.
- b) BALLS MANUFACTURED FROM MATERIAL MENTIONED AT (ii) AND (iii) SHALL BE ELECTROPLATED WITH NICKEL TO SPEC. DTD - 905 OR ELECTROTINNED TO SPEC. BS 1872 CLASS Sn 12 S OR IS : 1359 CLASS Sn 25 S OR ELECTROPLATED WITH CADMIUM TO SPEC. DTD - 904 OR IS : 1572 CLASS Cd 12. CADMIUM PLATED BALLS WILL BE CHROMATE PASSIVATED TO SPEC. DEF - 130 OR IS : 1340. THE BALLS MUST BE SMOOTH AND ANTIFRICTION.
- c) THE DIMENSIONS OF THE BALLS BEFORE PLATING SHALL BE H 4.75 & L 4.74
- d) MINIMUM HARDNESS REQUIRED 450 HV.

MATERIAL :-

- 1) STEEL TO SPEC. BS - 970 PART 1 : 1983, GRADE 410 S 21 OR 416 S 21, CONDITION P. OR
- 2) STEEL TO SPEC. BS - 970 PT. 1 : 1983 GR. 535 A 90 OR
- 3) HIGH CARBON STEEL CONFORMING TO SPEC. IS : 3749 : 1978 DESIGNATION 103 T 3. MAY BE USED OR
- 4) MATERIAL SAE 52100 SUBJECT TO ACHIEVE MINIMUM HARDNESS 450 HV

R. NO.	DATE	AUTHORITY	REVISION	ZONE	AHSP	D.O.	SIG.	DRN:- <i>SBH</i>	CHD:- <i>Chadhu</i>	TRD:-	COMP:-	ASSY.DRG. IQX 35 GE, IQX 41 GE, QX 240 GE, IQX 34 GE, IQX 23 GE, QX 198 GE.
	14-03-2008	DGQA S.O. SEC-I CHAP. 10, PARA 40	DRG. PREPARED IN AUTO-CAD WITHOUT CHANGE & M/C REPLACED IN SUPERSESSION OF EXISTING DILAPIDATED COPY OF SAME No.					<i>adhar</i>	<i>Chadhu</i>	SCALE: 4:1		
	11-03-2008	DC 37162-A	ALTERNATIVE MATERIAL ADDED.					C.D/MAN	O/C D.O.	EST.MASS:-		
			PREVIOUS DC Nos. : 25478-A, 25611-A, 27440-A, 28294-A, 28958-A, 30249-A, 30356-A, 30649-A, 30873-A, 32760-A, 32841-A, 32858-A, 33107-A, 33848-A, 33873-A, 34104-A, 35126-A & 35434-A.					SDA		GAUGE SCHD:-		
										DATE:-		
										MATL:- AS ABOVE		DESIGNER'S REF.
										PROTECTIVE FINISH:-		L5 / 9281 / E / 570
												PART NO.
												QX 1538
												D.S. GAT NO.
												311 - 0003635
												AHSP:
												CI(A) KIRKEE

BALL BEARING