

AAIW-1147/7

DRG. NO.

DRG. CONVERSION CONFORM TO IS:696  
DIMNS. ARE IN mm UNLESS OTHERWISE STATED

GEN. TOL COARSE TO IS: 2102

24

NOTE:- TO BE PRINTED BY SILK SCREEN PRINTING IN  
GOLDEN YELLOW UNLESS OTHERWISE STATED.  
-/- APPROVED INITIALS OF MANUFACTURER  
+ MONTH AND YEAR OF MANUFACTURER



MATERIAL- PRESSURE SENSITIVE ADHESIVE BLACK TAPE TO SPEC  
IS: 13282-1992 & QUALITY UNPLASTICIZED PVC.

PROVISIONALLY SEALED BY		SIGNATURE		M.R.K. RAO
RCMA(AA), 16 May 2008		NAME		
		DESIGNATION		REGIONAL DIRECTOR
	DATE	INITIAL	ALL DIMENSIONS ARE IN mm	
DGN.	2-8-07	ALYHES	MATERIAL	
DRN.	2-8-07	ALYHES	AS ABOVE	
CHD.	3-8-07	ALYHES		
D/E DRG	2-8-07	ALYHES	ASSY. DRG. NO.	
SCALE- 1:1		SCHD. NO.		APPD <i>[Signature]</i>
		TITLE		DRG. NO.
		LABEL		AAIW 1147/7
				SHT. NO. 8 / NO. OF SHTS. 8

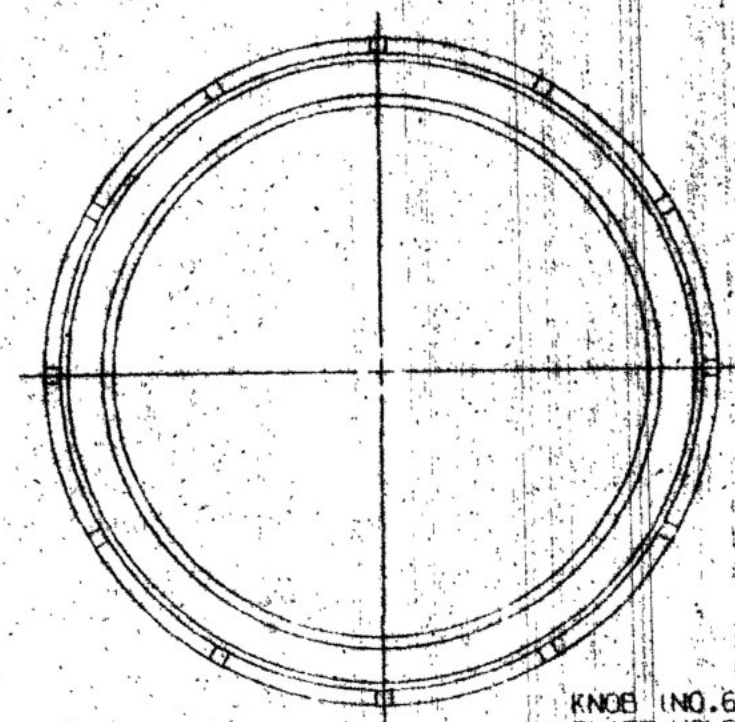
R. NO.	DATE	ZONE	BRIEF RECORD	INITIAL

AAIW - 1147  
 DRG. NO.

DRG. CONVERSION CONFORM TO IS: 696  
 DIMNS. ARE IN mm UNLESS OTHERWISE STATED

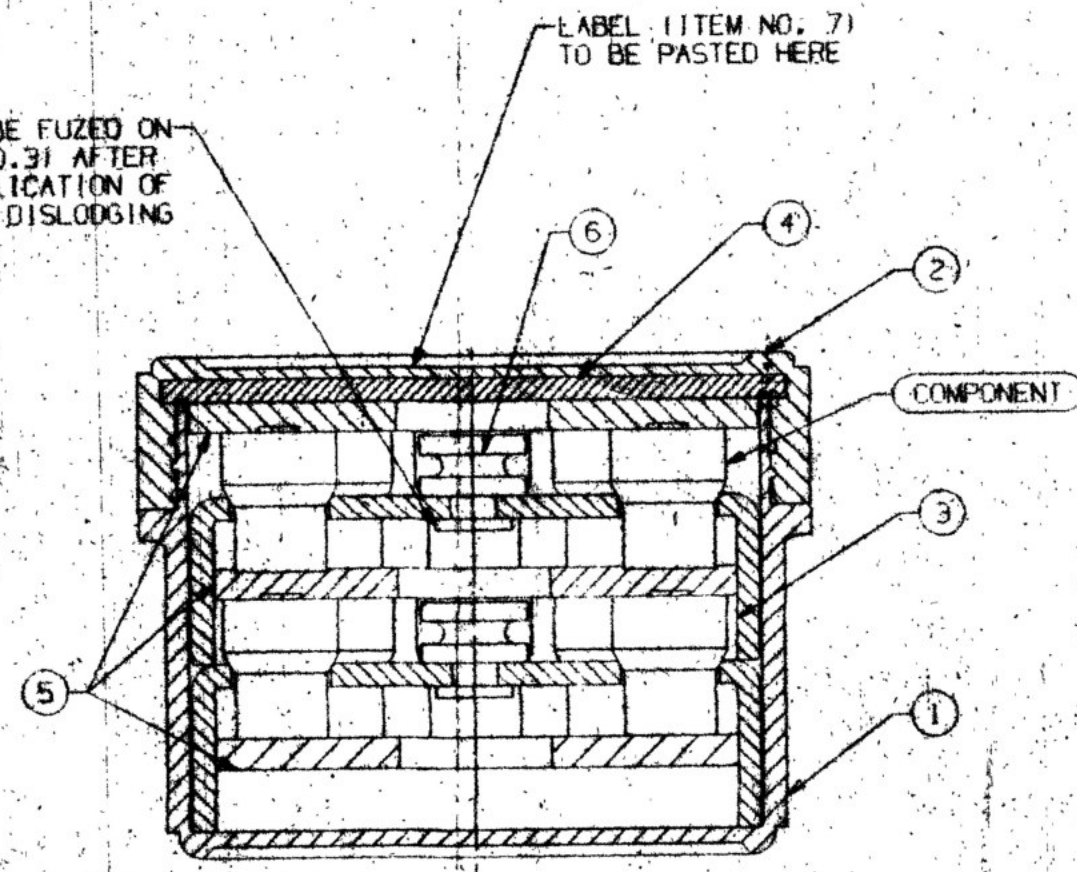
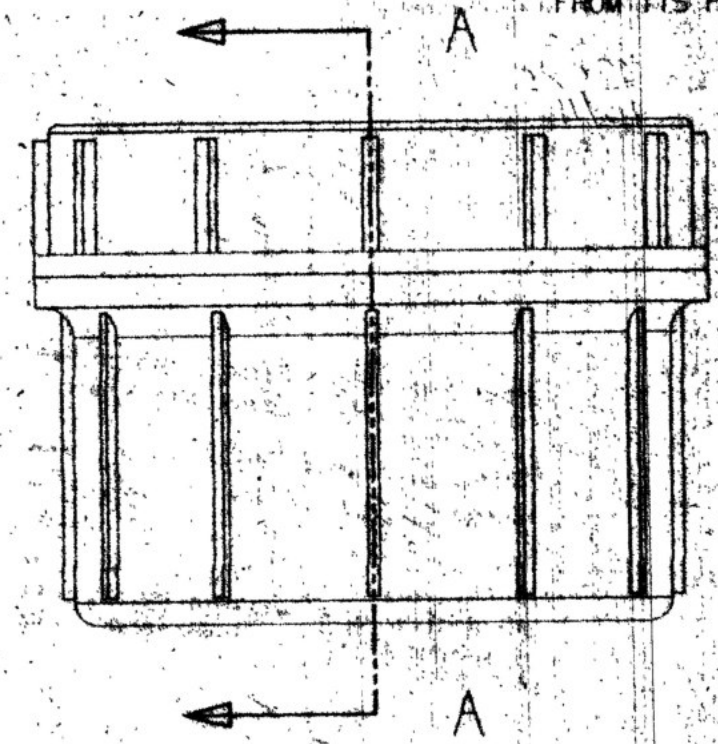
GEN. TOL. MEDIUM CLASS IS: 2102

NOTE:  
 CONTAINERS TO BE MANUFACTURED, INSPECTED  
 AND SUPPLIED AS PER SPECIFICATION CIA-2804



KNOB (NO. 6) TO BE FUZED ON  
 PLATE HOLDING (NO. 3) AFTER  
 ASSEMBLY BY APPLICATION OF  
 HEAT TO PREVENT DISLODGING  
 FROM ITS PLACE

LABEL (ITEM NO. 7)  
 TO BE PASTED HERE



SECTION A-A

ITEM NO.	DESCRIPTION	DRG. NO.	NO. OF
7	LABEL	AAIW-1147/7	1
6	KNOB	AAIW-1147/6	2
5	PACKING DISC	AAIW-1147/5	3
4	RUBBER DISC	AAIW-1147/4	1
3	PLATE HOLDING	AAIW-1147/3	2
2	LID	AAIW-1147/2	1
1	BODY	AAIW-1147/1	1

TITLE:-  
 PACKING ASSEMBLY FOR CONTAINER CARTG. ELEC.  
 OPERATING FIRE EXTINGUISHER PP3

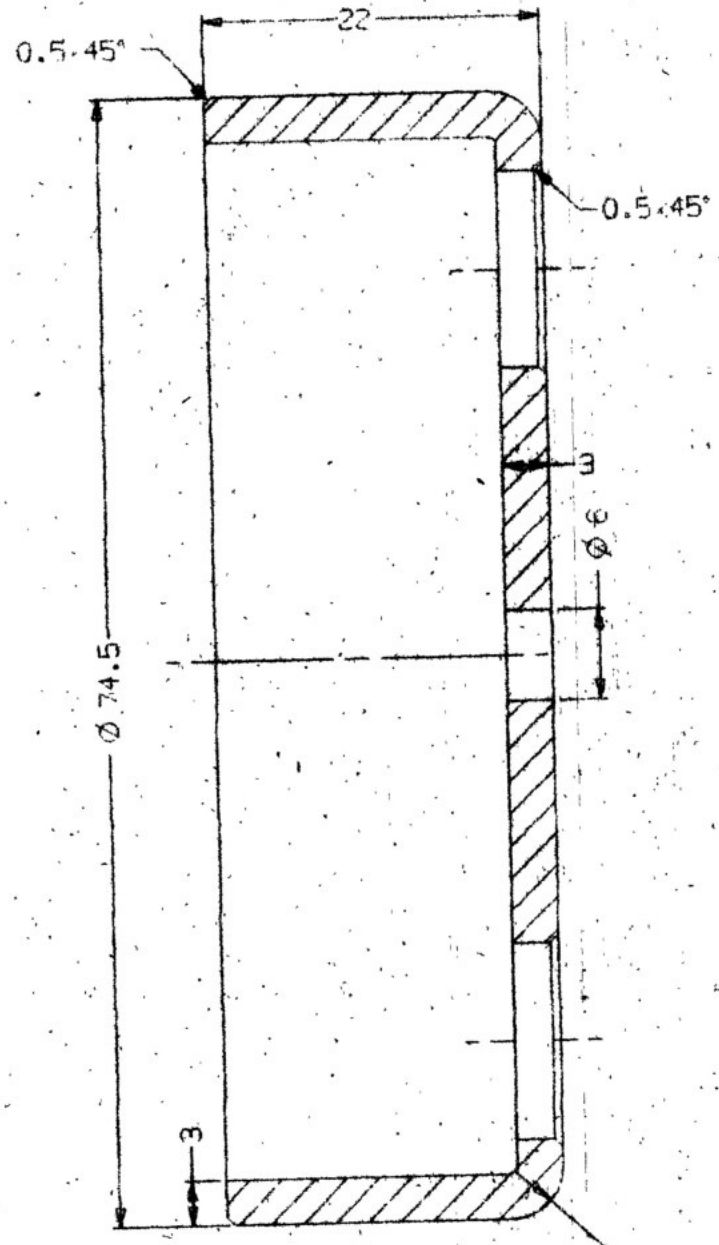
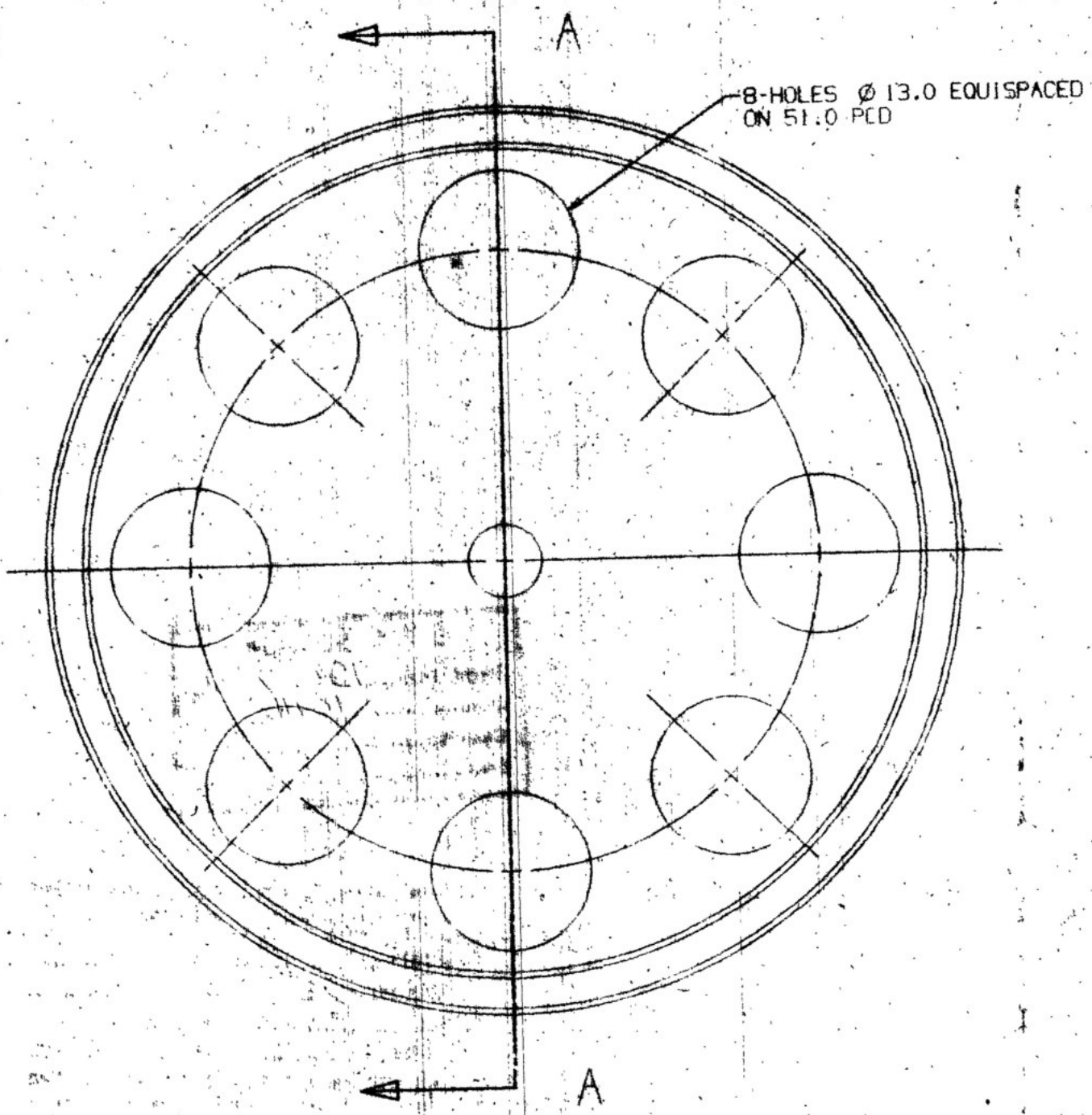
PROVISIONALLY SEALED BY RCMA(AA) 16/05/08			SIGNATURE NAME DESIGNATION	M. K. RAJ REGIONAL DIRECTOR
DGN.	DATE	INITIAL	ALL DIMENSIONS ARE IN mm	
DRN.		Santosh	MATERIAL	
CHD.		Santosh	ASSEMBLY NO.	
DATE	2-8-07	02/9/08	SCHD. NO.	
SCALE	1:1		TITLE	
			APPD. [Signature]	
			DRG. NO. AAIW - 1147	
			SHT. NO. 1 NO. OF SHEETS	

R. NO.	DATE	ZONE	BRIEF RECORD	INITIAL

DRG. NO. AAIW 1147/3

DRG. CONVENION CONFORM TO IS:696  
DIMNS. ARE IN mm UNLESS OTHERWISE STATED

GEN. TOL. MEDIUM CLASS IS: 2102



NOTE:  
1. CARBON BLACK TO SPEGN. IS:7497 2% TO 2.5% (BY MASS) SHOULD BE ADDED WITH MATERIAL.  
2. IMMEDIATELY AFTER MOULDING THE MOULDED ARTICLE SHOULD BE TRANSFERRED TO THE HOT WATER BATH TEMP. 80° C FOR HALF AN HOUR.

MATERIAL:  
HIGH DENSITY POLYETHELENE  
TYPE 2 TO ISS:9330:03-1995  
COLOUR: BLACK

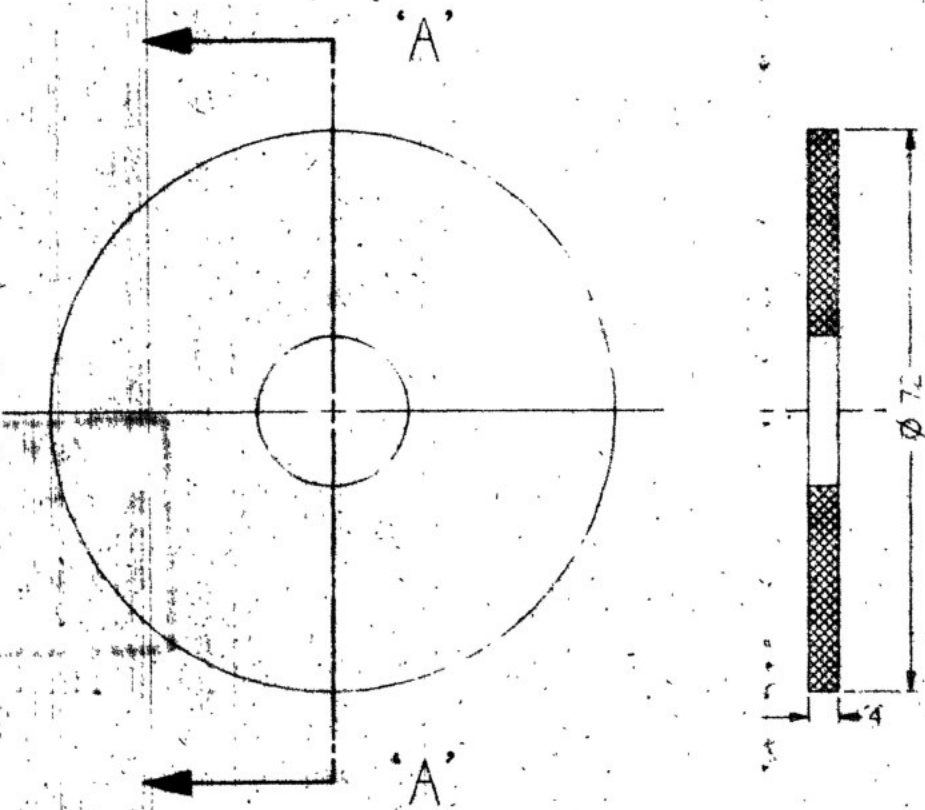
PROVISIONALLY SEALED BY		SIGNATURE		M.R.K. RAJU REGIONAL DIRECTOR
RCMA(AA) 16 May 2008		NAME		
DATE		DESIGNATION		AAIW KHAMARIA
DGN.	2-8-07	MATERIAL		
DRN.				
CHD.		ASSY. DRG. NO.		APPD. <i>Panna</i>
SCALE	2:1	SCHD. NO.		
TITLE		DRG. NO.		AAIW - 1147/3
PLATE HOLDING		SHT. NO. 1		

R. NO.	DATE	ZONE	BRIEF RECORD	INITIAL

AAIW - 1147/5  
 DRG. NO.

DRG. CONVERSION CONFORM TO IS:696  
 DIMNS. ARE IN mm UNLESS OTHERWISE STATED  
 GEN. TOL.: MEDIUM CLASS IS:2102

22



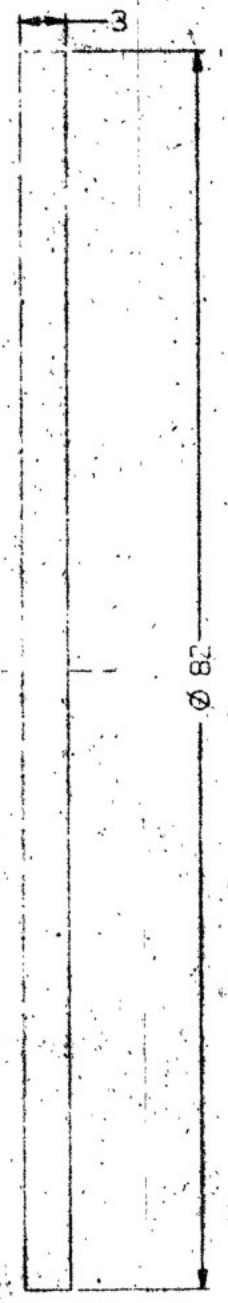
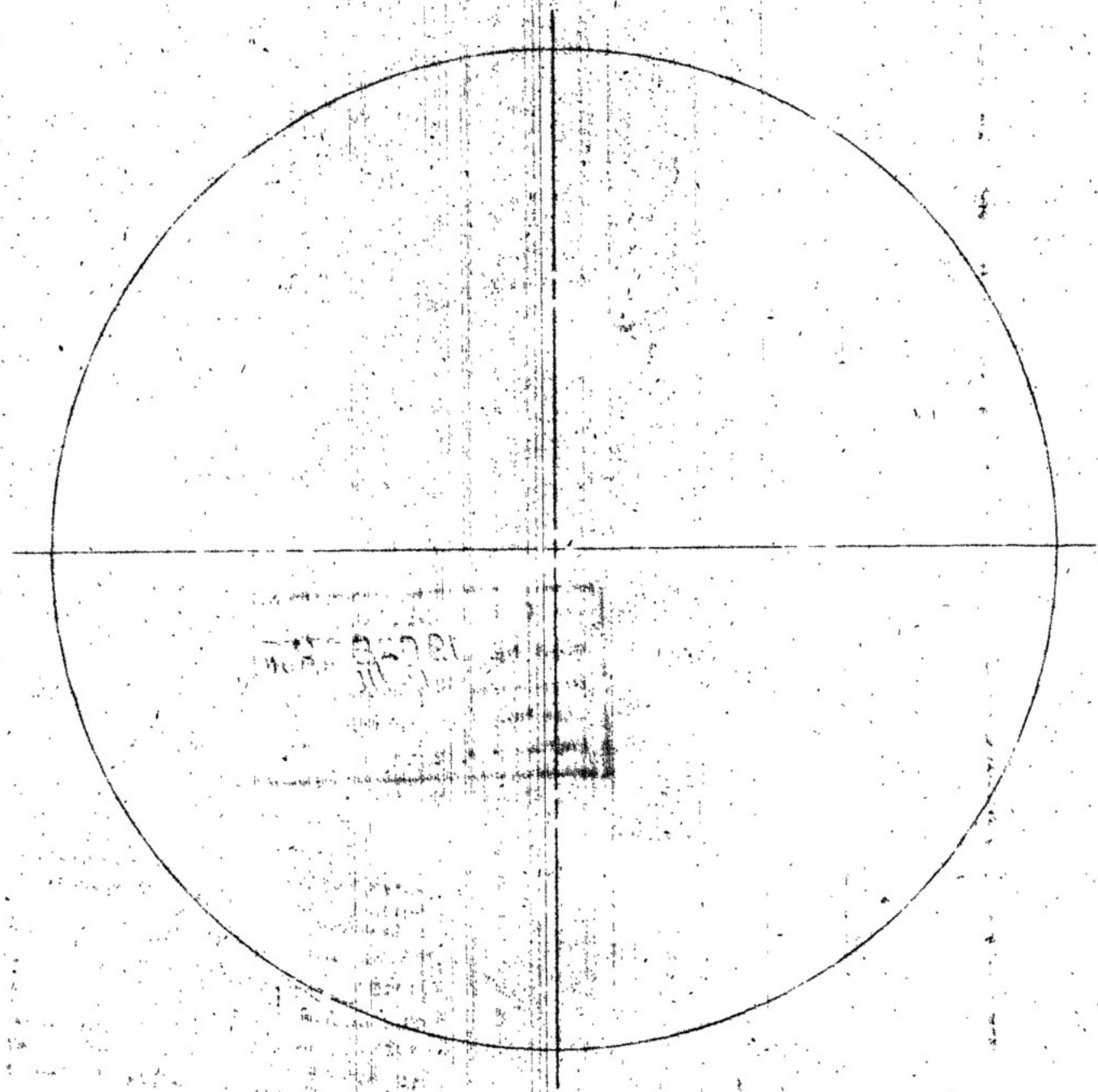
SECTION A-A

**MATERIAL:**  
 EXPANDED POLYETHELENE FOAM  
 OF AVERAGE DENSITY 18 TO 25 Kg/m<sup>3</sup>

PROVISIONALLY SEALED BY		SIGNATURE	
RCMA(AA) 16 May 2008		M.R.K. RAJU	
		REGIONAL DIRECTOR	
	DATE	INITIAL	ALL DIMENSIONS ARE IN mm
DGN.	28-07	g/h/04	MATERIAL
DRN.	---	---	AS ABOVE
CHD.	---	---	
D.T.C. DRG.	---	g/h/04	ASSY. DRG. NO. _____
SCALE - 1:1		SCHD. NO. _____	
		APPD. <i>[Signature]</i>	
		TITLE	
		PACKING DISC	
		DRG. NO. AAIW - 1147/5	
		SHT. NO. 6 NO. OF SHTS. 6	

R. NO.	DATE	ZONE	BRIEF RECORD	INITIAL

DRG. CONVERSION CONFORM TO IS:696  
 DIMNS. ARE IN mm UNLESS OTHERWISE STATED  
 GEN. TOL.: MEDIUM CLASS IS:2102  
 DRG. NO. AAIW - P147/4



MATL - NEOPRENE RUBBER TO SPEC.  
 IND/ME/884 (PROV.)

PROVISIONALLY SEALED BY		SIGNATURE	
RUPNAAA 16 May 2008		M.R.K. RAJU	
DATE		DESIGNATION	
2-8-07	ALY H	REGIONAL DIRECTOR	
DRN.	---	AAIW	
CHD.	---	KHAMARIA	
Q/C	---	AS ABOVE	
SCALE - 2:1	ASSY. DRG. NO.		
	SCHD. NO.	APPD. PAMUN	
	TITLE	DRG. NO. AAIW - 1147/4	
	RUBBER DISC	SHT. NO. 5 NO. OF SHTS. 5	

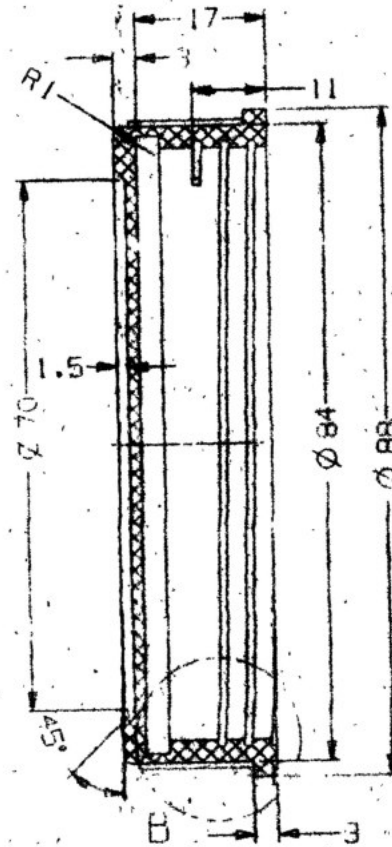
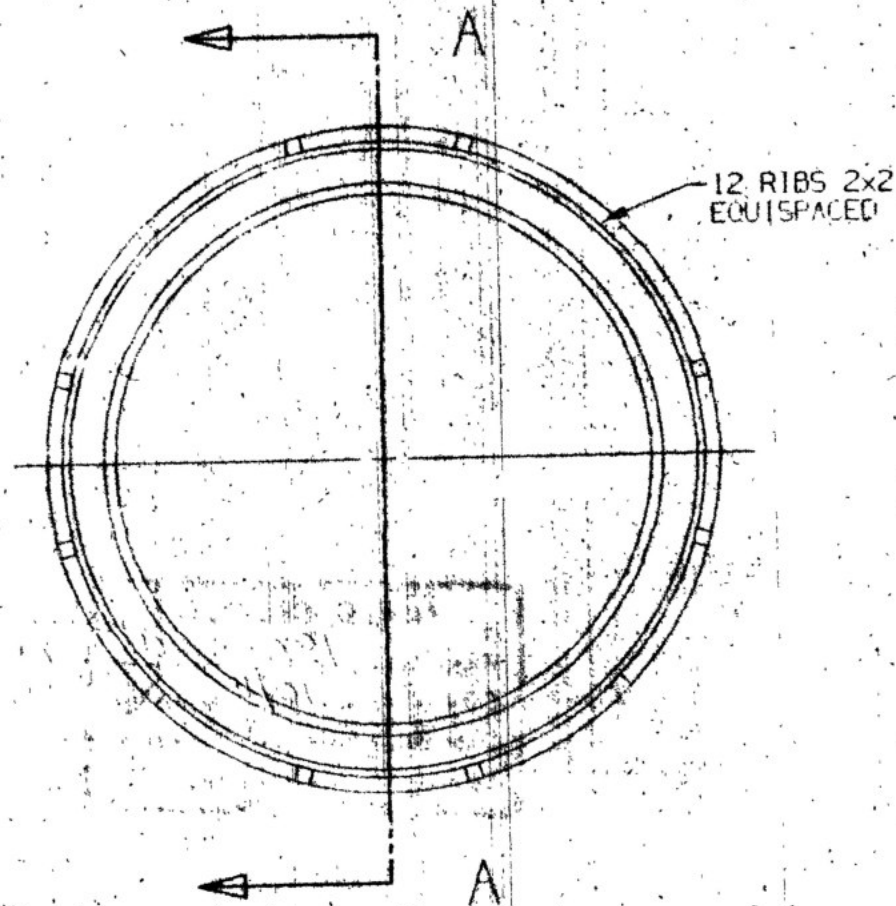
R. NO.	DATE	ZONE	BRIEF RECORD	INITIAL

AAIW - 1147/2

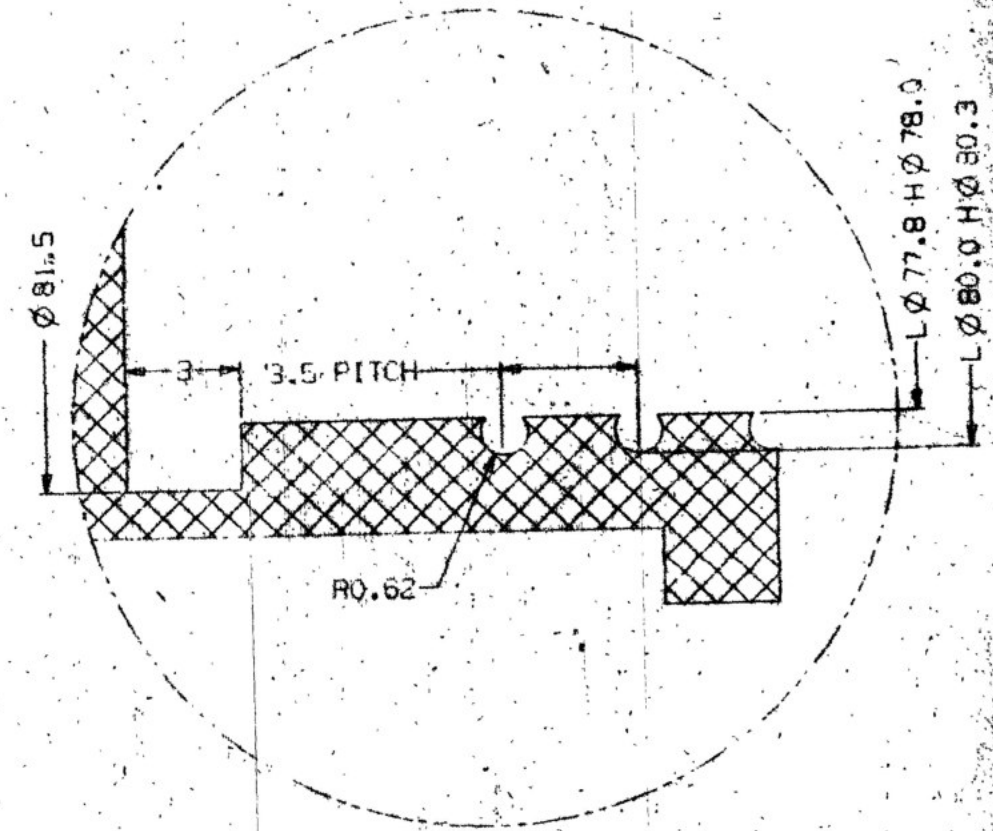
DRG. NO.

DRG. CONVERSION CONFORM TO IS:696  
DIMNS. ARE IN mm UNLESS OTHERWISE STATED

GEN. TOL.: MEDIUM CLASS IS:2102



SECTION A-A



DETAIL B  
SCALE 5:1



MATERIAL:  
HIGH DENSITY POLYETHYLENE  
TYPE 2 TO ISS:9330-03-1995  
COLOUR: BLACK

- NOTE:
- CARBON BLACK TO SPECN. IS:7497 2% TO 2.5% (BY MASS) SHOULD BE ADDED WITH MATERIAL.
  - IMMEDIATELY AFTER MOULDING THE MOULDED ARTICLE SHOULD BE TRANSFERRED TO THE HOT WATER BATH (TEMP. 80° C) FOR HALF AN HOUR.

PROVISIONALLY SEALED BY RCMA(AA) 16 May 2008		SIGNATURE NAME DESIGNATION		M.R.K. RAJU REGIONAL DIRECTOR	
DGN.	DATE	INITIAL	ALL DIMENSIONS ARE IN mm		
DRN.	28.07	MKH	MATERIAL		
CHD.		Santosh	ASSY. DRG. NO.		
Q.L.C. DRG.	28.07	MKH	SCHD. NO.		
SCALE- 1:1			TITLE LID		
			APPD. KHAMARIA		
			DRG. NO. AAIW - 1147/2		
			SHT. NO. 3 NO. OF SHTS. 8		

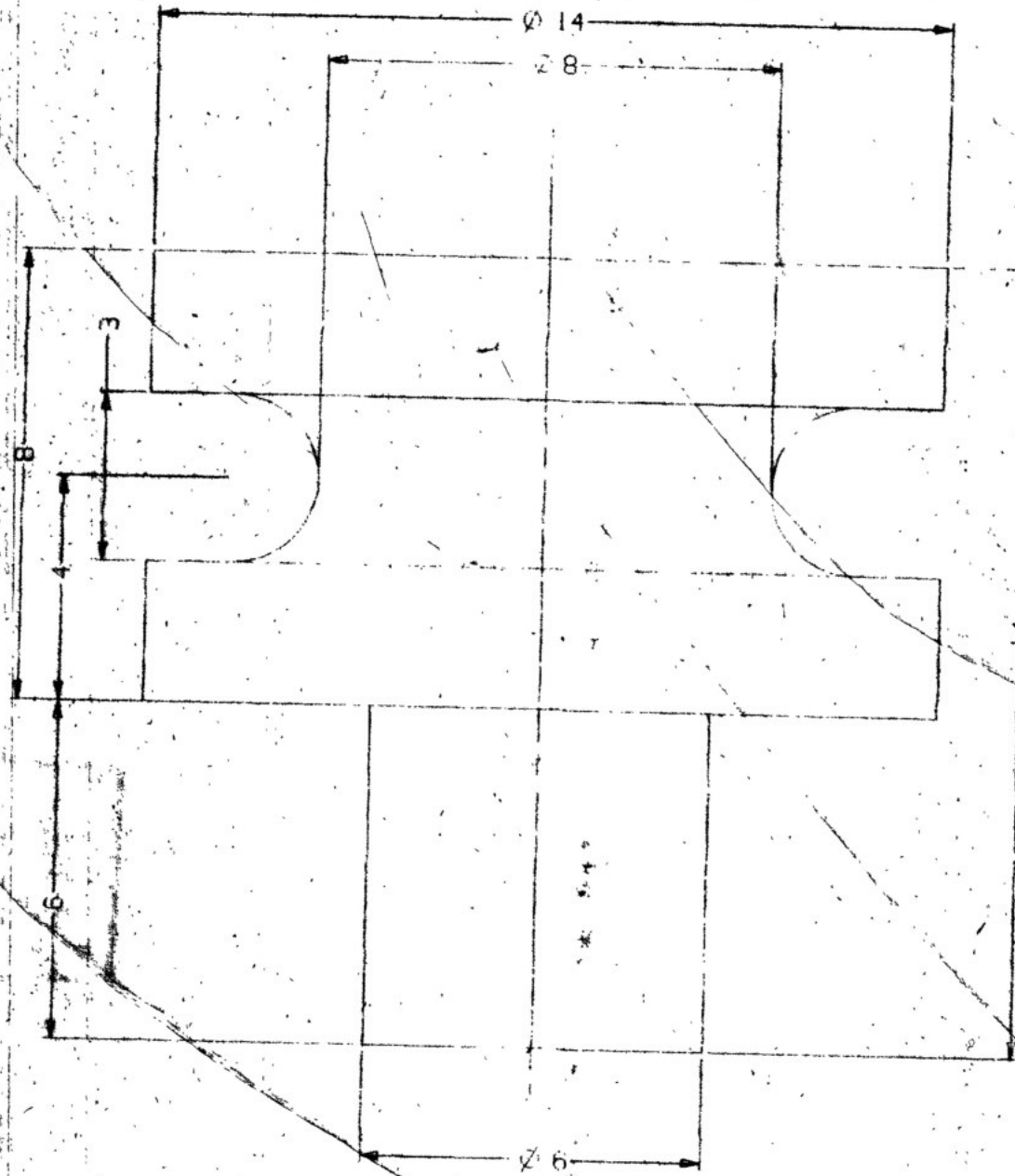
R. NO.	DATE	ZONE	BRIEF RECORD	INITIAL

DRG. NO. AAIW 1147/6

DRG. CONVERSION CONFORM TO IS:696  
DIMNS. ARE IN mm UNLESS OTHERWISE STATED

GEN. TOL. MEDIUM CLASS IS: 2102

23



KNOB

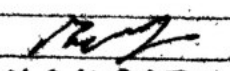
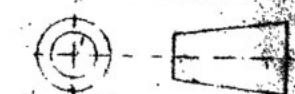
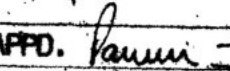
FOR LIFTING PLATE HOLDING

NOTE:

1. CARBON BLACK TO SPECN. IS:7497 2% TO 2.5% (BY MASS) SHOULD BE ADDED WITH MATERIAL.
2. IMMEDIATELY AFTER MOULDING THE MOULDED ARTICLE SHOULD BE TRANSFERRED TO THE HOT WATER BATH (TEMP. 80° C) FOR HALF AN HOUR.

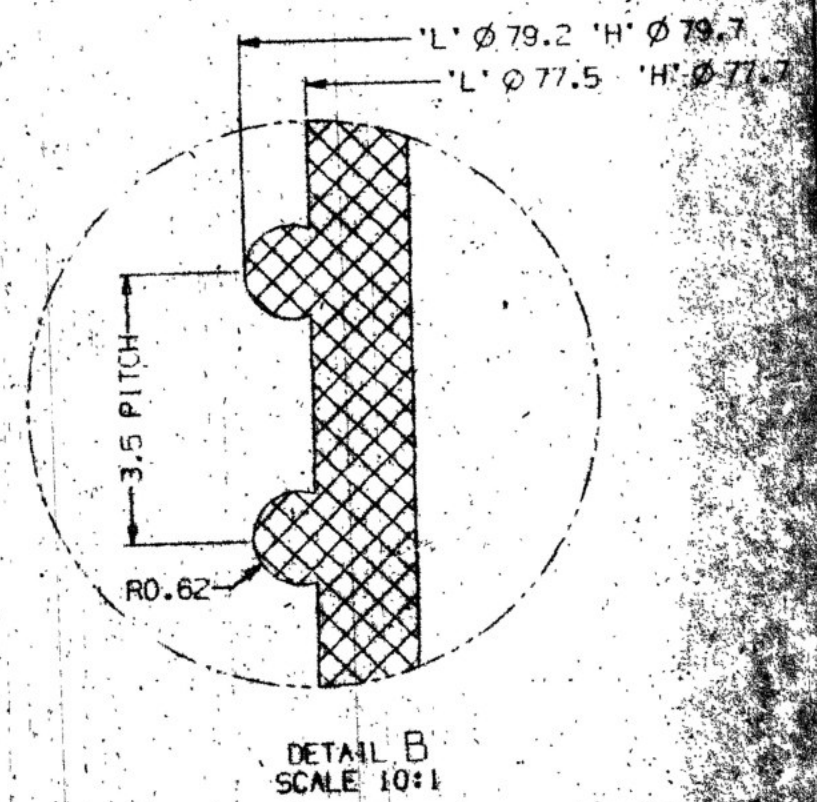
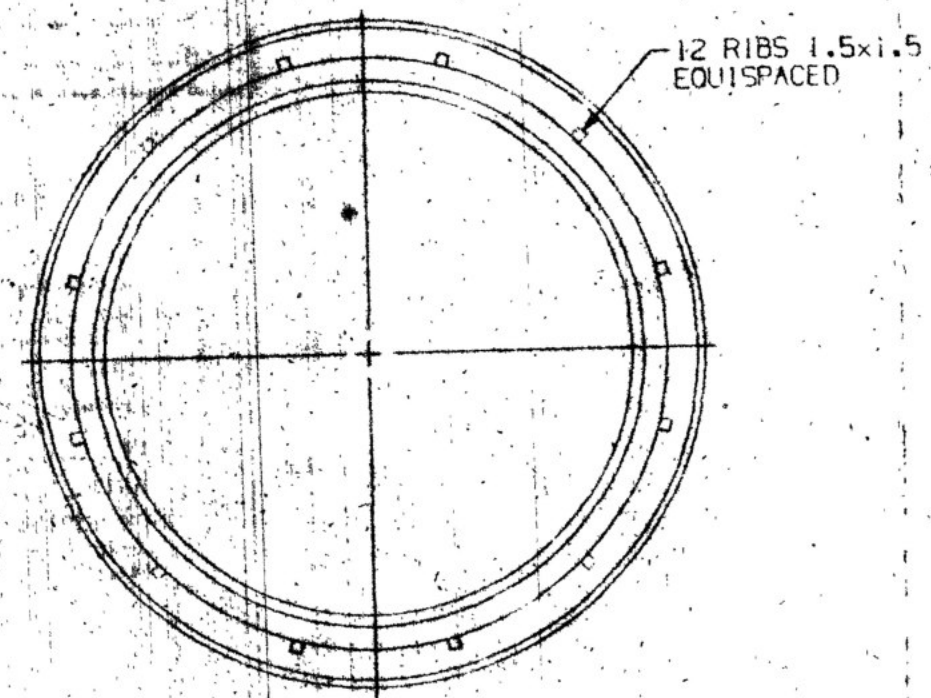
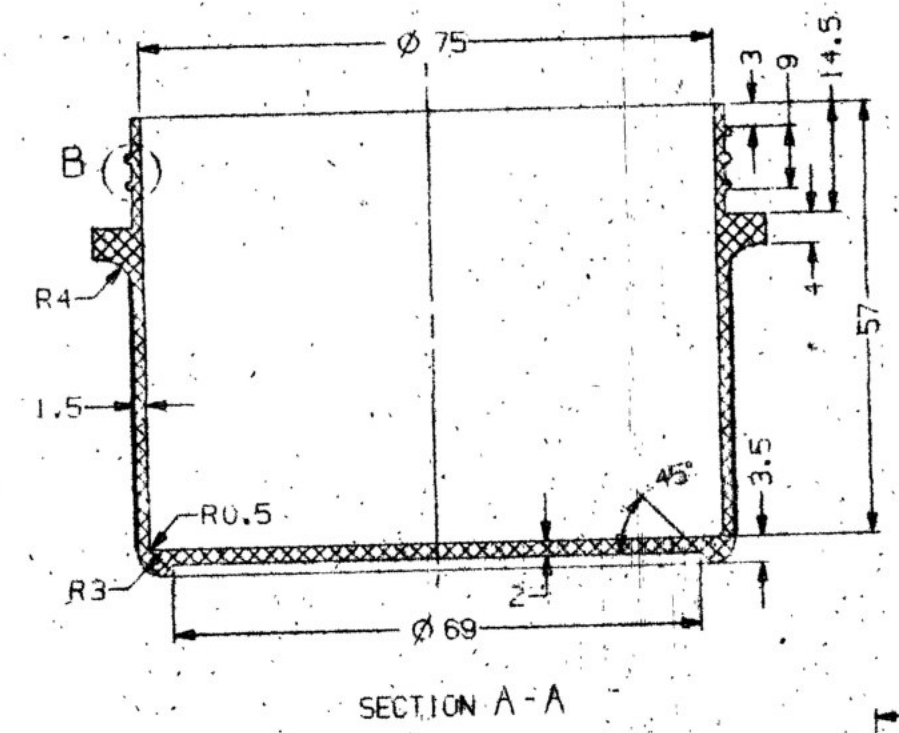
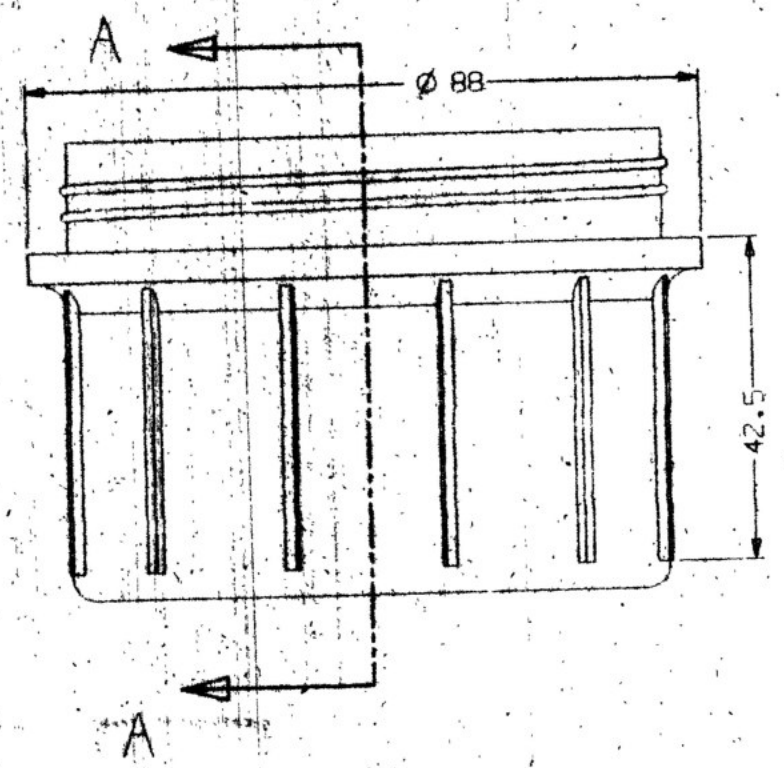
MATERIAL - HIGH DENSITY POLYETHELENE  
TYPE 3 TO ISS-9330-03-1995  
COLOUR-BLACK

R. NO.	DATE	ZONE	BRIEF RECORD	INITIAL

PROVISIONALLY SEALED BY		SIGNATURE		 <b>M.R.K. RAJU</b> REGIONAL DIRECTOR
RCMA(AA) 16 May 2008		NAME		
DATE		DESIGNATION		AAIW KHAMARIA 
INITIAL		ALL DIMENSIONS ARE IN mm		
MATERIAL		AS ABOVE		
DGN.	2-8-07	MyHEX	ASSY. DRG. NO.	APPD.  DRG. NO. AAIW 1147/6 SHT. NO. 7 NO. OF SHTS. 18
DRN.		Santosh	SCHD. NO.	
CHD.		Santosh	TITLE	
DATE	2-8-07	MyHEX	KNOB	
SCALE- 8:1				

DRG. NO. AAIW - 1147/1

DRG. CONVERSION CONFORM TO IS:696  
 DIMNS. ARE IN mm UNLESS OTHERWISE STATED  
 GEN. TOL.: MEDIUM CLASS IS:2102



NOTE:  
 1. CARBON BLACK TO SPECN. IS:7497, 2% TO 2.5% (BY MASS) SHOULD BE ADDED WITH MATERIAL.  
 2. IMMEDIATELY AFTER MOULDING THE MOULDED ARTICLE SHOULD BE TRANSFERRED TO THE HOT WATER BATH (TEMP: 80° C) FOR HALF AN HOUR.

MATERIAL:  
 HIGH DENSITY POLYETHELENE  
 TYPE 2 TO ISS:9330-03 1995  
 COLOUR: BLACK

R. NO.	DATE	ZONE	BRIEF RECORD	INITIAL

PROVISIONALLY SEALED BY RCMA(AA) 16 May 2008		SIGNATURE NAME DESIGNATION		M. R. K. RAJU REGIONAL DIRECTOR
DGN.	2-8-07	INITIAL	M. R. K.	
DRN.				AAIW KHAMARIA
CHD.				
DATE	2-8-07			APPD. <i>[Signature]</i>
SCALE	1:1			
		TITLE		DRG. NO. AAIW - 1147/1
				SHT. NO. 2
				NO. OF SHEETS