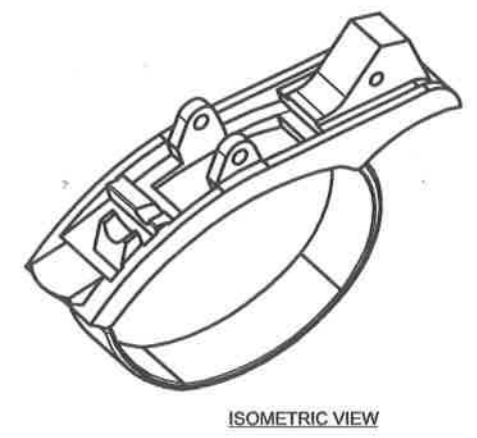
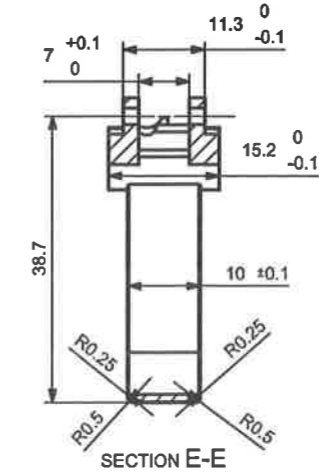
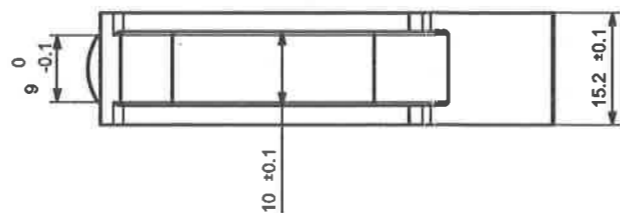
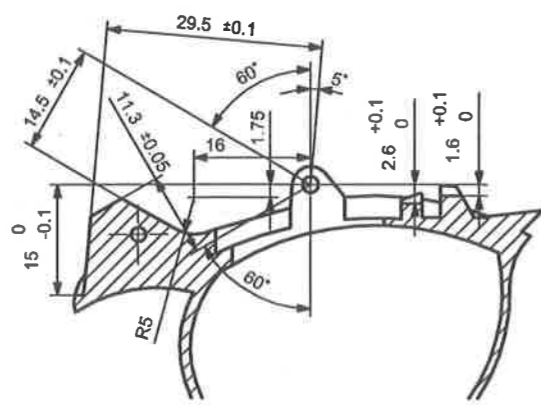
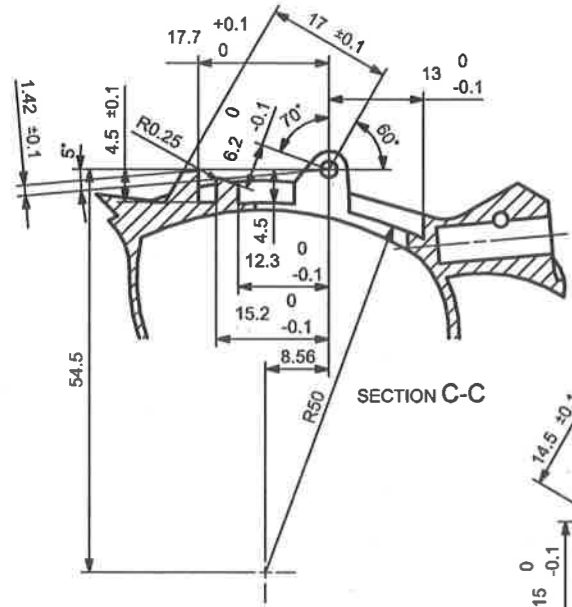
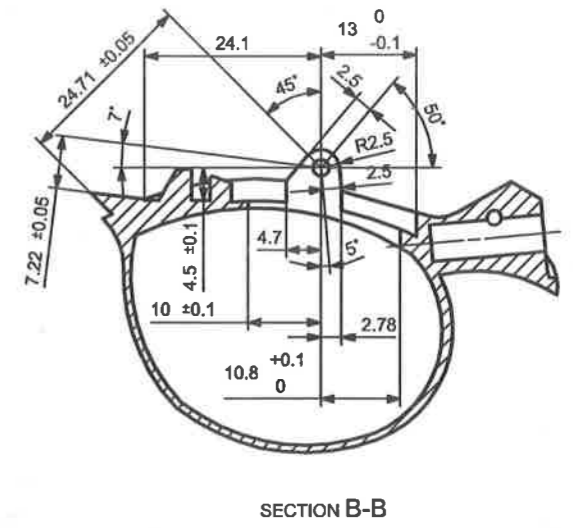
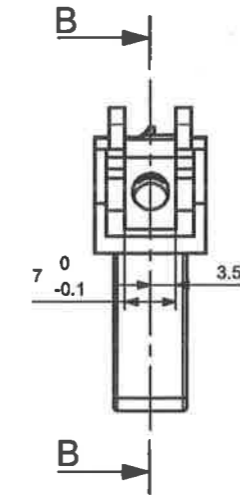
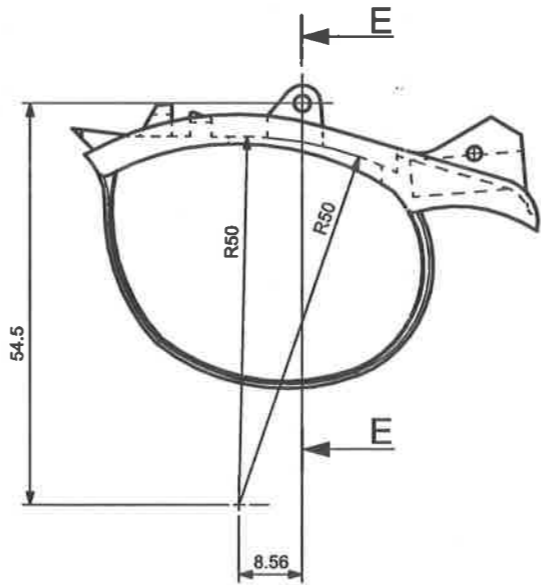
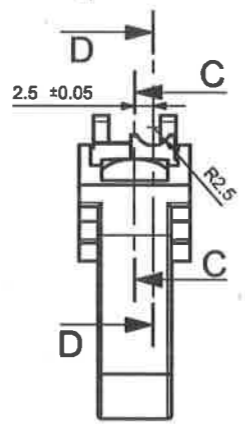
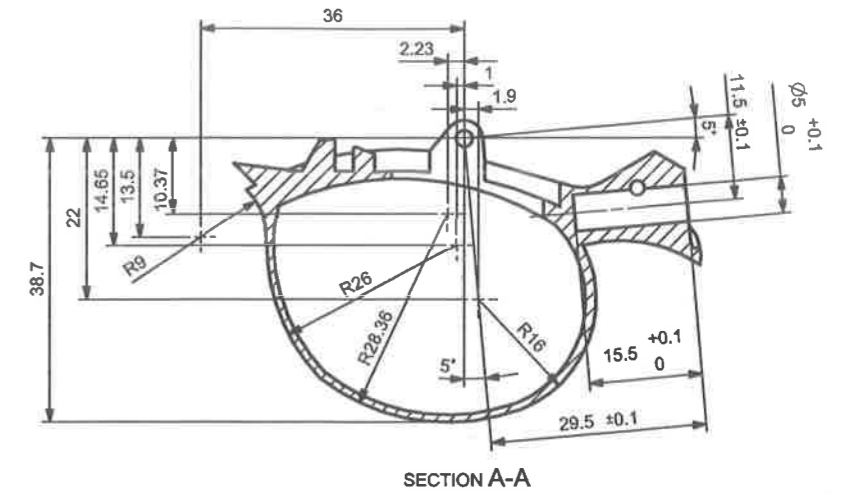
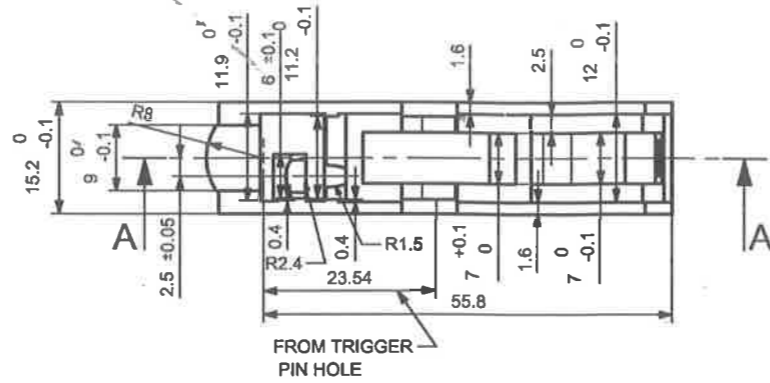
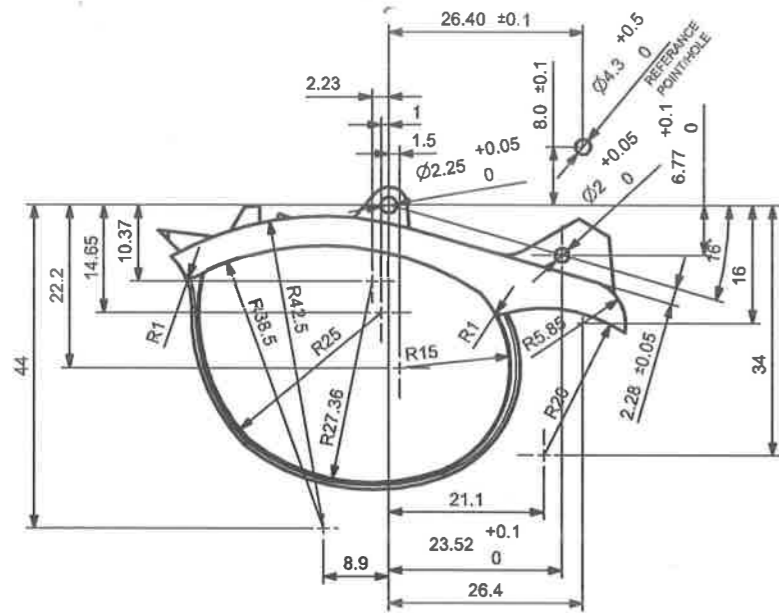


NOTE:- ALL PROFILE DIMNS (R42.5,R5.85 & 2.28 at 16°) SHOULD BE PROPERLY MATCHED WITH BODY PROFILE.



MATERIAL:- STEEL BS970 Pt.1:1983 Gd.708M40  
In 'T' CONDITION  
HEAT TREATMENT:- HARDENED & TEMPERED TO  
248 - 302 H.V.  
PROTECTIVE FINISH:-ELECTROSTATIC POWDER COATING  
IN BLACK COLOR AFTER ASSY.

REVOLVER.32 (7.65 mm) SIDE SWING	DESIGNED BY	A.S.RANA
TRIGGER GUARD	CHECKED BY	JWMDDO
	APPROVED BY	JWMDDO
	DATE	24.06.2019
SCALE 2 : 1	SMALL ARMS FACTORY KANPUR	DRAWING NO. RV-07/1 SW
		SHEET 1 OF 1

DIMENSIONS ARE IN MM.