

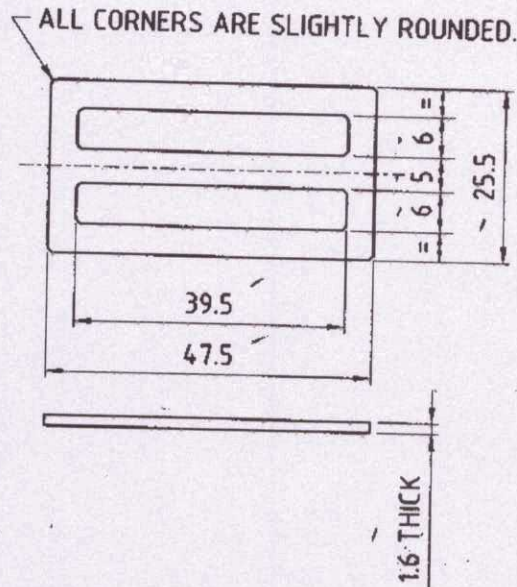
CHEST, SPARE PARTS, TOOLS & ACCESSORIES, 101C

BUCKLE ✓

DRG. No. :- CII-399/32.

MCT-3175

ORDNANCE FACTORY, DEHRADUN.



MCT-3176

NOTE :- WHERE CII-399/33, IS SOLDERED ON IT, BRONZING TO BE MADE AFTER SOLDERING.

MATL. :- BRASS, CuZn37 (HB) TO IS:410-1977.

FINISH :- BRONZED.

FOR TRADE USE
Date of Issue 04/01/21
Roy

ALL DIMENSIONS ARE MM.
IMPORTANT DIMENSIONS MARKED THUS ●
INFORMATION MARKED THUS † TO BE MARKED ON.

		DT.-22.09.2011	SCALE- 1:1
		DR.- R.K.SHARMA	MATL AS ABOVE
		TR.-	TREAT AS ABOVE
		CH.- <i>al</i>	SHTS.- 1
		APPROVED.	
AMENDMENTS. OFD/DO/002		<i>al</i> JWM/DO.	<i>AWM</i> AWM/ASSY.
		DRAWING No. - <u>MCT-3175</u>	

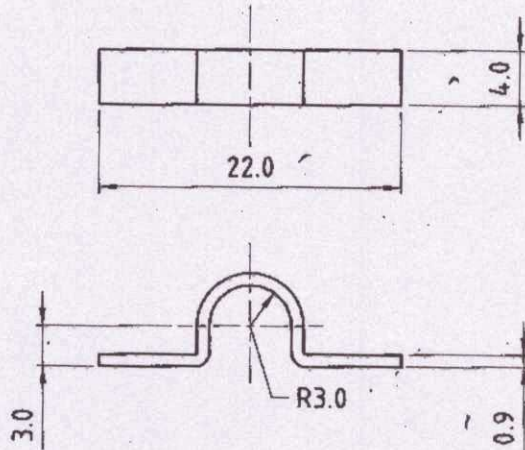
CHEST, SPARE PARTS, TOOLS & ACCESSORIES, 101C

LOOP

DRG. No. :- CII-399/33.

MCT-3176

ORDNANCE FACTORY, DEHRADUN.



MATL. :- BRASS, CuZn37 (HD) TO IS:410-1977.
FINISH :- CLEANED.

FOR TRADE USE
 Date of Issue: 22/09/11
 Rep

ALL DIMENSIONS ARE MM.
 IMPORTANT DIMENSIONS MARKED THUS ●
 INFORMATION MARKED THUS † TO BE MARKED ON.

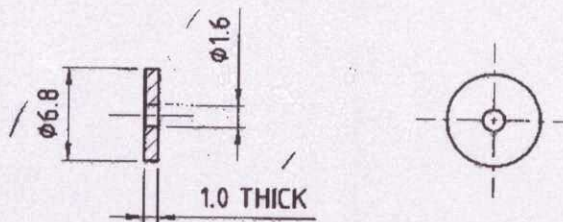
		DT.-22.09.2011	SCALE- 2:1
	DR.- R.K.SHARMA	<u>MATL.</u>	<u>TREAT.</u>
	TR.-	AS ABOVE	AS ABOVE
	CH.- <i>ch</i>	SHTS.- 1	SHT. NO.- 1
	<u>APPROVED.</u>	DRAWING No. - MCT-3176	
AMENDMENTS.	<i>ch</i>		
OFD/DO/002	JWM/DO. <i>AWM</i> AWM/ASSY.		

**CHEST, SPARE PARTS, TOOLS & ACCESSORIES, 101C
WASHER**

DRG. No. :- CII-399/4

MCT-3183

ORDNANCE FACTORY, DEHRADUN.



MATL. :- COPPER IS:3487-1966.
FINISH :- CLEANED.

FOR TRADE OFFICE
Date of Issue: 04/01/21
Rg

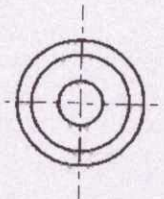
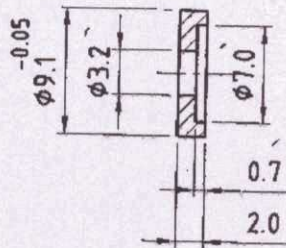
ALL DIMENSIONS ARE MM.
IMPORTANT DIMENSIONS MARKED THUS ●
INFORMATION MARKED THUS † TO BE MARKED ON.

		DT. - 15.09.2011	SCALE - 2:1
	DR. - R.K.SHARMA	<u>MATL.</u> AS ABOVE	<u>TREAT.</u> AS ABOVE
	TR. -		
	CH. - <i>AK</i>	SHTS. - 1	SHT. NO. - 1
	APPROVED.	DRAWING No. - <u>MCT-3183</u>	
AMENDMENTS.	<i>AK</i>		
OFD/DÔ/002	JWM/DO. AWM/ASSY.		

CHEST, SPARE PARTS, TOOLS & ACCESSORIES, 101C
WASHER, INSULATING

DRG. No. :- CII-399/2.

MCT-3180



ORDNANCE FACTORY, DEHRADUN.

MATL. :- FEBRIC BASE THERMO SETTING SYNTHETIC RESIN
 BONDED LAMINATED SHEET (HYLAM) GRADE F 1
 OF IS:2038-1962. -

FINISH :- CLEANED. -

FOR TRADE USE
 Date of Issue 04/01/21
Rgt

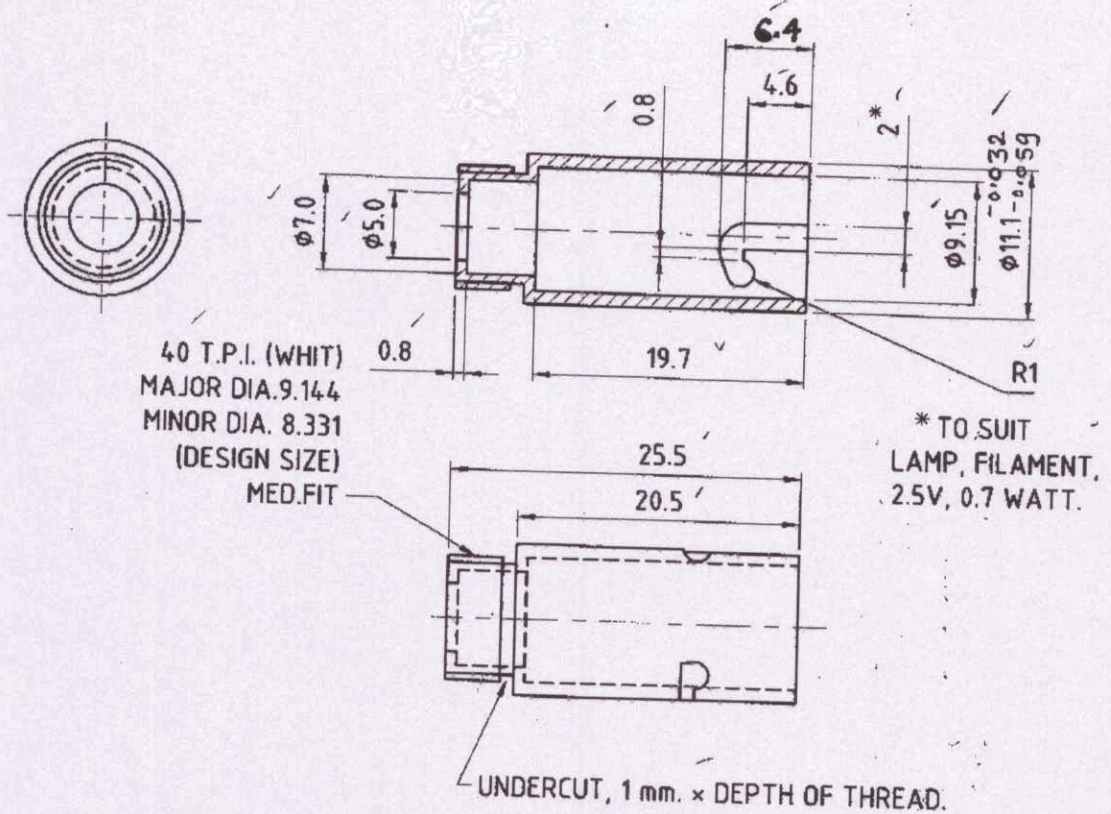
ALL DIMENSIONS ARE MM.
 IMPORTANT DIMENSIONS MARKED THUS ●
 INFORMATION MARKED THUS † TO BE MARKED ON.

		DT. - 15.09.2011	SCALE - 2:1
	DR. - R.K.SHARMA	MATL	TREAT
	TR. -	AS ABOVE	AS ABOVE
	CH. - <i>[Signature]</i>	SHTS. - 1	SHT. NO. - 1
	APPROVED.	DRAWING No. - MCT-3180	
AMENDMENTS.	<i>[Signature]</i>		
OFD/DO/002	JWM/DO. AWM/ASSY.		

CHEST, SPARE PARTS, TOOLS & ACCESSORIES, 101C ADAPTER

DRG. No. :- CII-399/1.

MCT-3161



ORDNANCE FACTORY, DEHRADUN.

MATL. :- BRASS, BS:2874-1969/CZ 122 M.
FINISH :- CLEANED.

FOR TRADE ONLY
Date of Issue: 04/01/11
Rg

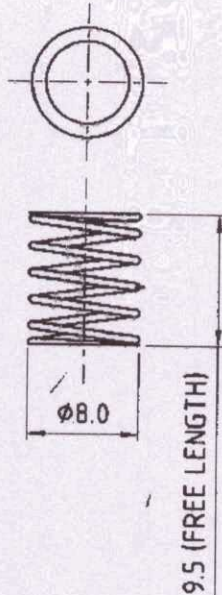
ALL DIMENSIONS ARE MM.
IMPORTANT DIMENSIONS MARKED THUS ●
INFORMATION MARKED THUS † TO BE MARKED ON.

		DT.-15.09.2011	SCALE- 2:1
DR.- R.K.SHARMA		MATL. AS ABOVE	TREAT. AS ABOVE
TR.-		SHTS.- 1	SHT. NO.- 1
CH.- <i>al</i>		DRAWING No.- MCT-3161-	
APPROVED.			
<i>al</i> JWM/DO. <i>al</i> AWM/ASSY.			
AMENDMENTS.			
OFD/DO/002			

CHEST, SPARE PARTS, TOOLS & ACCESSORIES, 101C
SPRING

DRG. No. :- CII-399/3

MCT-3182



NOTE :-

- DIA. OF WIRE 1.0 mm.
- DEFLECTION PER COIL --0.7 AT 1.5 Kg.
- No. OF EFFECTIVE COILS-- 5.
- PLAIN ENDS.

TREATMENT :- HARDENED & TEMPERED.

MATL. :- SPRING STEEL, Gde.SW OF IS:4454 (Pt. II) 1975.
FINISH :- CLEANED.

FOR TRADE ONLY
 Date of Issue: 04/01/24
 Raj

ALL DIMENSIONS ARE MM.
 IMPORTANT DIMENSIONS MARKED THUS ●
 INFORMATION MARKED THUS † TO BE MARKED ON.

		DT.-15.09.2011	SCALE- 2:1
	DR.- R.K.SHARMA	<u>MATL.</u>	<u>TREAT.</u>
	TR.-	AS ABOVE	AS ABOVE
	CH.- <i>ak</i>	SHTS.- 1	SHT. NO.- 1
	<u>APPROVED.</u>	<u>DRAWING No. -</u> <u>MCT-3182</u>	
AMENDMENTS.	<i>ak</i>		
OFD/DO/002	JWM/DO. AWM/ASSY.		

ORDNANCE FACTORY, DEHRADUN.

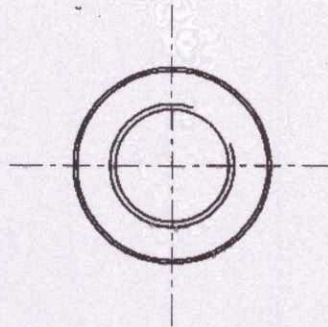
CHEST, SPARE PARTS, TOOLS & ACCESSORIES, 101C

NUT

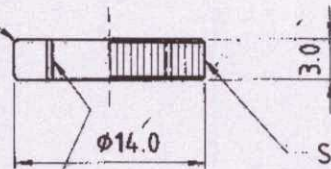
DRG. No. :- CII-399/20

MCT-3164

ORDNANCE FACTORY, DEHRADUN.



SLIGHTLY
CHAMFERED



STRAIGHT KNURLING
(FINE)

40 T.P.I. WHIT.
MAJOR DIA. 9.144 (DESIGN SIZE)
MINOR DIA. 8.331
(MEDIUM FIT)

MATL. :- BRASS, BS:2874/CZ -122 M.

FINISH :- BRONZED, BLACK DULL.

FOR TRADE COPY
Date of Issue 04/01/24
Rg

ALL DIMENSIONS ARE MM.
IMPORTANT DIMENSIONS MARKED THUS ●
INFORMATION MARKED THUS † TO BE MARKED ON.

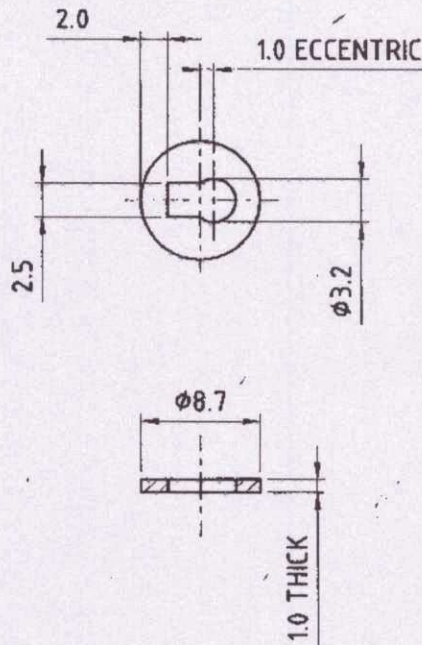
	DR. - R.K.SHARMA	DT. - 22.09.2011	SCALE - 2:1
	TR. -	<u>MATL.</u> AS ABOVE	<u>TREAT.</u> AS ABOVE
	CH. - <i>[Signature]</i>	SHTS. - 1	SHT. NO. - 1
	<u>APPROVED.</u>	<u>DRAWING No.</u> MCT-3164	
AMENDMENTS.	<i>[Signature]</i>		
OFD/DO/002	JWM/DO. AWM/ASSY.		

CHEST, SPARE PARTS, TOOLS & ACCESSORIES, 101C
WASHER

DRG. No. :- CII-399/19

MCT-3199

ORDNANCE FACTORY, DEHRADUN.



MATL. :- BRASS, IS:410/CuZn30, 1/2 H.
FINISH :- CLEANED.

FOR TRADE OFFICE
Date of Issue: 04/05/11
Ref: [Signature]

ALL DIMENSIONS ARE MM.
IMPORTANT DIMENSIONS MARKED THUS ●
INFORMATION MARKED THUS † TO BE MARKED ON

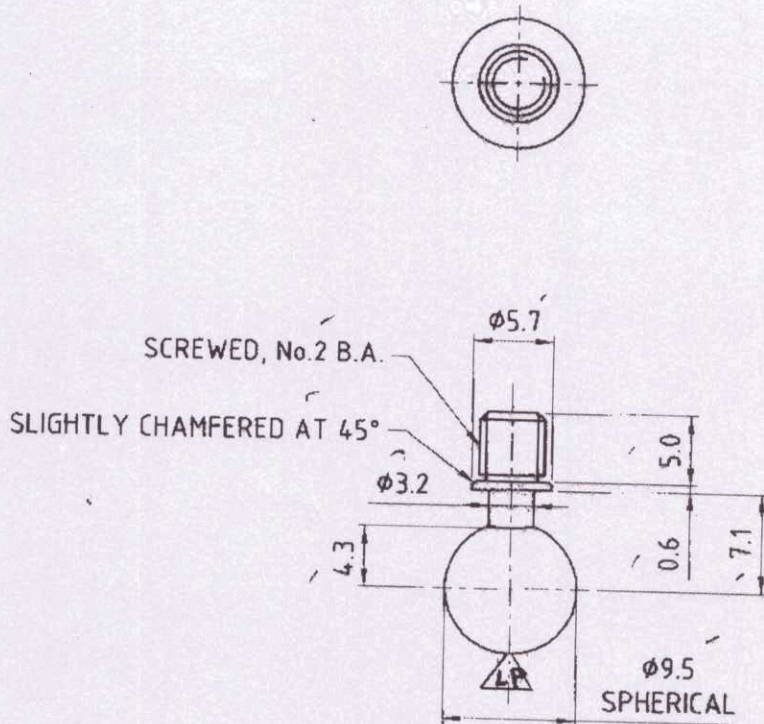
		DT.-21.09.2011	SCALE- 2:1
	DR.- R.K.SHARMA	MATL. AS ABOVE	TREAT. AS ABOVE
	TR.-		
	CH.- [Signature]	SHTS.- 1	SHT. NO.- 1
	APPROVED.	DRAWING No.- MCT-3199	
AMENDMENTS.	[Signature]		
OFD/DO/002	JWM/DO. [Signature] AWM/ASSY.		

CHEST, SPARE PARTS, TOOLS & ACCESSORIES, 101C
SCREW SPECIAL

DRG. No. :- CII-399/23

MCT-3166/1

ORDNANCE FACTORY, DEHRADUN.



MATL. :- STEEL, BS:970/En 43A (PROOF STRESS TESTED)
 OR IS:2073/C55 Mn 75.
FINISH :- LAPPED & BROWNE.

FOR TRADE USE
 Date of Issue 04/01/14
Rd

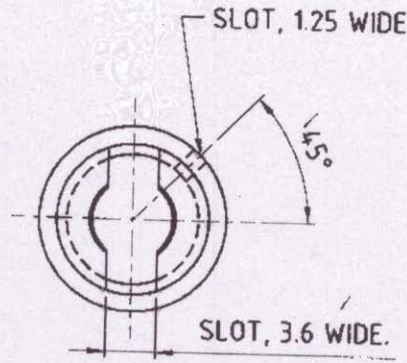
ALL DIMENSIONS ARE MM.
 IMPORTANT DIMENSIONS MARKED THUS ●
 INFORMATION MARKED THUS † TO BE MARKED ON.

		DT.-23.09.2011	SCALE- 2:1
		DR.- R.K.SHARMA	MATL. AS ABOVE
		TR.-	TREAT. AS ABOVE
		CH. <i>ad</i>	SHTS.- 1
D.A.No. 6/2014 Dtd. 0/2/2014		APPROVED	SHT. NO. 1
AMENDMENTS.		<i>ad</i>	DRAWING No - MCT-3166/1
OFD/DO/002		JWM/DO. AWM/ASSY.	

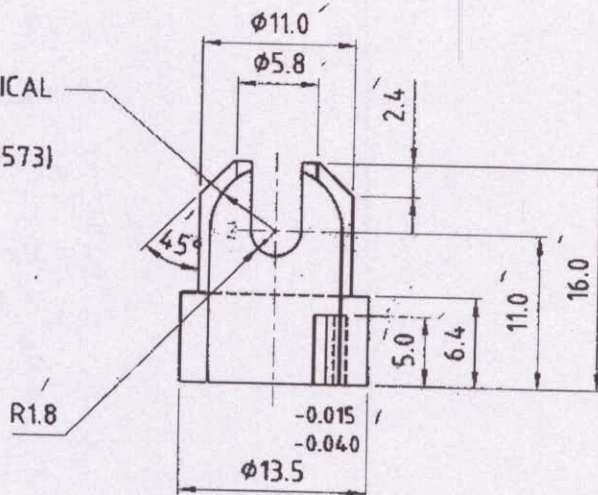
CHEST, SPARE PARTS, TOOLS & ACCESSORIES, 101C SOCKET

DRG. No. :- CII-399/24

MCT-3167



4.75 RAD. SPHERICAL
LAPPED TO SUIT
CII-399/23 (IOS-1573)
MCT-3166



FOR TRADE ONLY
Date of Issue 04/01/17

MATL. :- BRASS, BS:2874/CZ-122 M.
FINISH :- BRONZED, BLACK, DULL.

ALL DIMENSIONS ARE MM.
IMPORTANT DIMENSIONS MARKED THUS. ●
INFORMATION MARKED THUS † TO BE MARKED ON

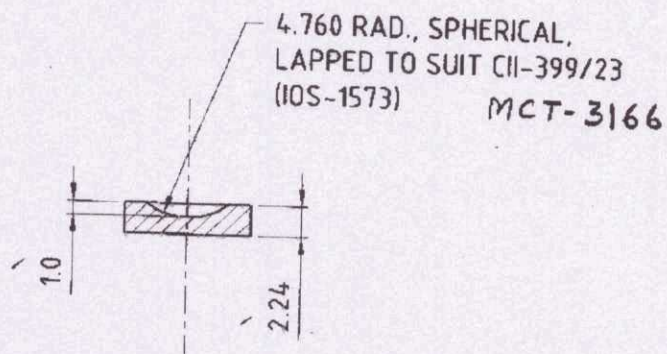
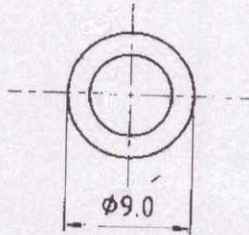
		DT. - 23.09.2017	SCALE - 2:1
DR. - R.K.SHARMA		MATL.	TREAT.
TR. -		AS ABOVE	AS ABOVE
CH. <i>[Signature]</i>		SHTS. - 1	SHT. NO. - 1
APPROVED.		DRAWING No. - MCT-3167	
<i>[Signature]</i>			
JWM/DO. AWM/ASSY.			
AMENDMENTS.			
OFD/DO/002			

ORDNANCE FACTORY, DEHRADUN.

**CHEST, SPARE PARTS, TOOLS & ACCESSORIES, 101C
SEAT, BEARING**

DRG. No. :- CII-399/25

MCT-3168/1



MATL. :- PHOS. BRONZE, IS:1385/P CuSn4 CONDITION H.
FINISH :- CLEANED.

FOR TRADE CHM
Date of Issue 04/01/14
Raj

ALL DIMENSIONS ARE MM.
IMPORTANT DIMENSIONS MARKED THUS ●
INFORMATION MARKED THUS † TO BE MARKED ON.

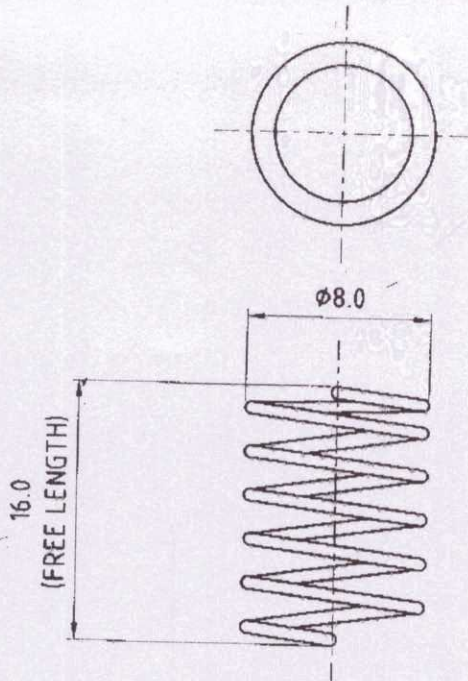
	DR.- R.K.SHARMA	DT.-23.09.2011	SCALE-- 2:1
	TR.-	MATL. AS ABOVE	TREAT. AS ABOVE
	CH.- <i>AK</i>	SHTS.- 1	SHT. NO.- 1
D.A.NO. 6/2014 Dtd. 8/2/2014	APPROVED	DRAWING No.- <u>MCT-3168/1</u>	
AMENDMENTS.	<i>AK</i>		
OFD/DO/002	JWM/DO. AWM/ASSY.		

ORDNANCE FACTORY, DEHRADUN.

CHEST, SPARE PARTS, TOOLS & ACCESSORIES, 101C SPRING

DRG. No. :- CII-399/26

MCT-3169



NOTE :-

DIA. OF WIRE=1.25 mm.
 TO COMPRESS TO 9.0 mm. WITH LOAD OF 14 Kg. ± 1 Kg.
 No. OF EFFECTIVE COILS= 6
 PLAIN ENDS.

MATL :- CARBON, SPRING STEEL WIRE, BS:970/En 42 B.
FINISH :- HARDENED, TEMPERED & BLUED.

FOR TRADE USE
 Date of Issue 04/01/11
 Rgn

ALL DIMENSIONS ARE MM.
 IMPORTANT DIMENSIONS MARKED THUS ●
 INFORMATION MARKED THUS † TO BE MARKED ON.

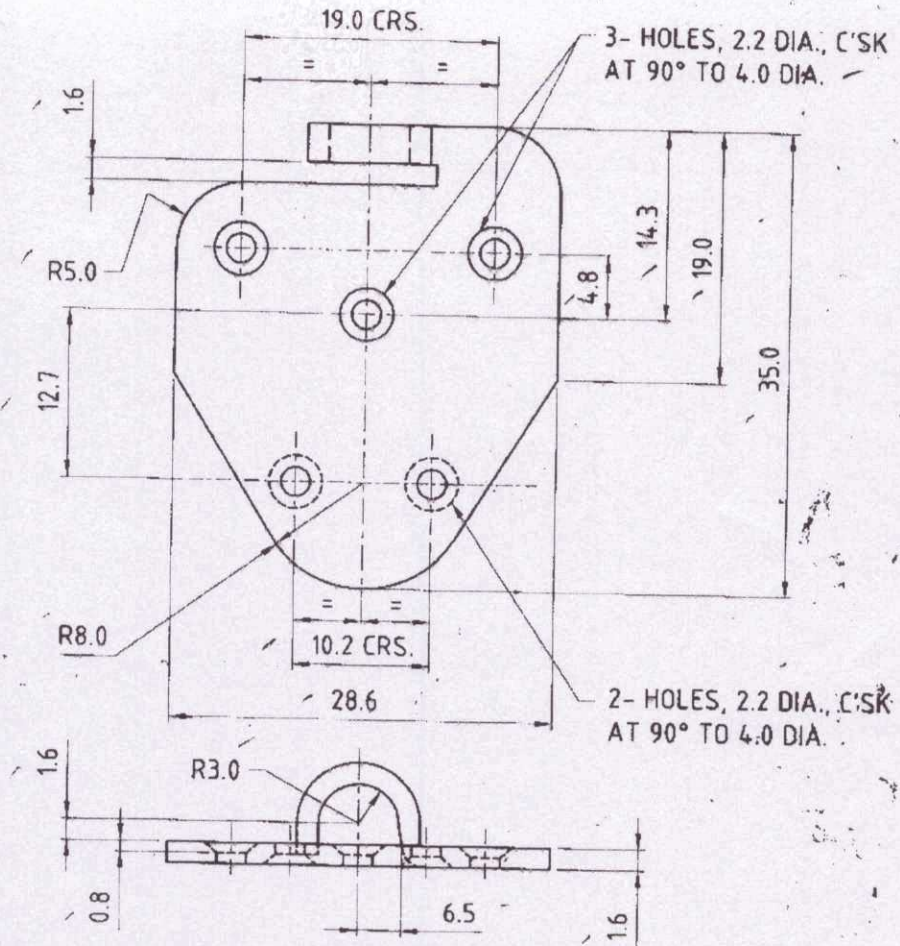
		DT.-24.09.2011	SCALE- 2:1
	DR.- R.K.SHARMA	MATL	TREAT
	TR.-	AS ABOVE	AS ABOVE
	CH.- <i>al</i>	SHTS.- 1	SHT. NO.- 1
	APPROVED	DRAWING No. - MCT-3169	
AMENDMENTS.	<i>al</i>		
OFD/DO/002	JWM/DO. <i>AWM</i> AWM/ASSY.		

ORDNANCE FACTORY, DEHRADUN.

CHEST, SPARE PARTS, TOOLS & ACCESSORIES, 101C PLATE

DRG. No. :- CII-399/29.

MCT-3172



MATL. :- M.S., BS:1449 Pt.1 B/CR 4 OR IS:513/DRAWING TYPE.
FINISH :- CLEANED.

FOR TRADE OFF
Date of Issue: 04/01/21
Rij

ALL DIMENSIONS ARE MM.
IMPORTANT DIMENSIONS MARKED THUS ●
INFORMATION MARKED THUS † TO BE MARKED ON

		DT.-22.09.2011	SCALE- 1:2
DR.- R.K.SHARMA		MATL.	TREAT.
TR.-		AS ABOVE	AS ABOVE
CH.- <i>[Signature]</i>		SHTS.- 1	SHT. NO.- 1
AMENDMENTS. OFD/DO/002		APPROVED	
		<div style="display: flex; justify-content: space-around;"> <div style="text-align: center;"> <i>[Signature]</i> JWM/DO. </div> <div style="text-align: center;"> <i>[Signature]</i> AWM/ASSY. </div> </div>	
		DRAWING No. - MCT-3172	

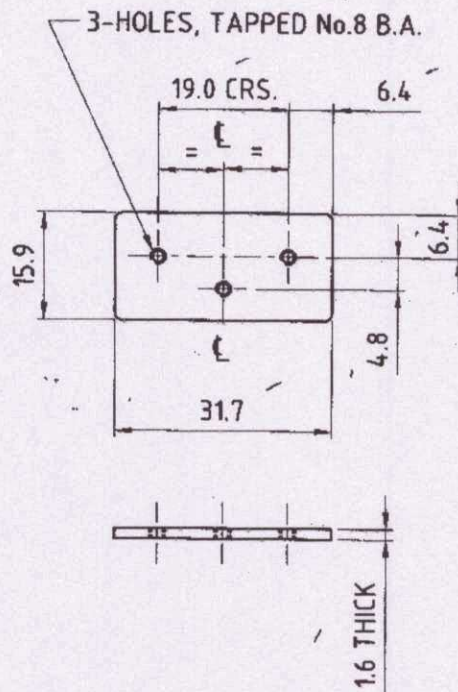
ORDNANCE FACTORY, DEHRADUN.

CHEST, SPARE PARTS, TOOLS & ACCESSORIES, 101C
PLATE

DRG. No. :- CII-399/30.

MCT-3173

ORDNANCE FACTORY, DEHRADUN.



MATL. :- M.S., BS:1449 Pt.1B/CR 4 OR IS:513/0.
FINISH :- CLEANED.

FOR TRADE USE
Date of issue 04/01/21
Rg

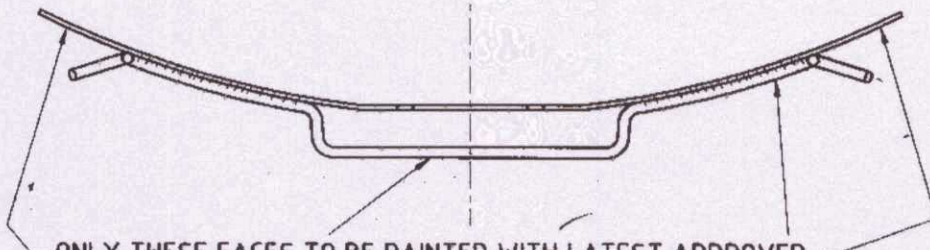
ALL DIMENSIONS ARE MM.
IMPORTANT DIMENSIONS MARKED THUS ●
INFORMATION MARKED THUS † TO BE MARKED ON.

		DT.-22.09.2011	SCALE- 1:1
		MATL.	TREAT.
		AS ABOVE	AS ABOVE
		CH.- <i>st</i>	SHTS.- 1, SHT. NO.- 1
		APPROVED.	
AMENDMENTS.		<i>st</i>	DRAWING No. - MCT-3173
0FD/DO/002		JWM/DO. AWM/ASSY.	

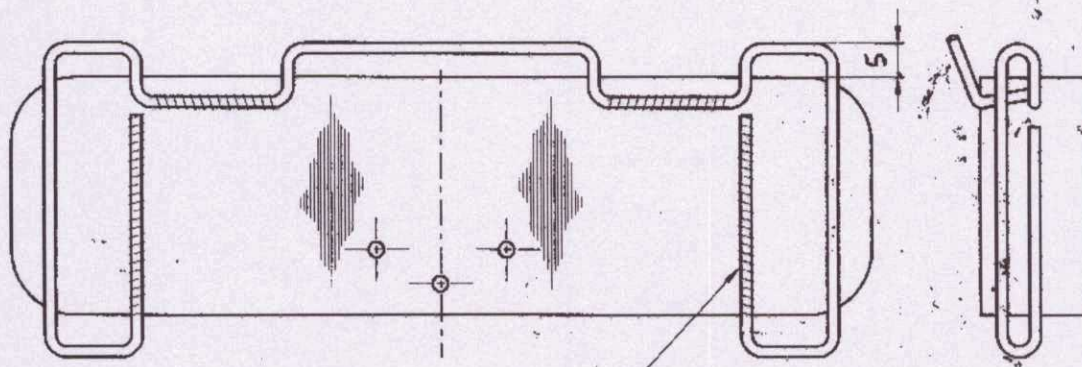
CHEST, SPARE PARTS, TOOLS & ACCESSORIES, 101E STRIP

DRG. No. :- CII-399/38 (SHT.1 OF 3)

MCT-3179
(SHT.1)



ONLY THESE FACES TO BE PAINTED WITH LATEST APPROVED SERVICE COLOUR AFTER ASSEMBLY.



TO BE SILVER SOLDERED

FOR TRADE USE
Date of Issue: 04/01/14
Ref:

ALL DIMENSIONS ARE MM.
IMPORTANT DIMENSIONS MARKED THUS ●
INFORMATION MARKED THUS † TO BE MARKED ON.

	DR.- R.K.SHARMA	DT.- 27.09.2011	SCALE- 1:1
	TR.-	MAIL- SEE DETAILS	TREAT- SEE DETAILS
	CH.- <i>al</i>	SHTS.- 3	SHT. NO.- 1
AMENDMENTS.	APPROVED:	DRAWING No. :- MCT-3179	
OFD/DO/002	<i>al</i> JWM/DO. <i>CS</i> AWM/ASSY.		

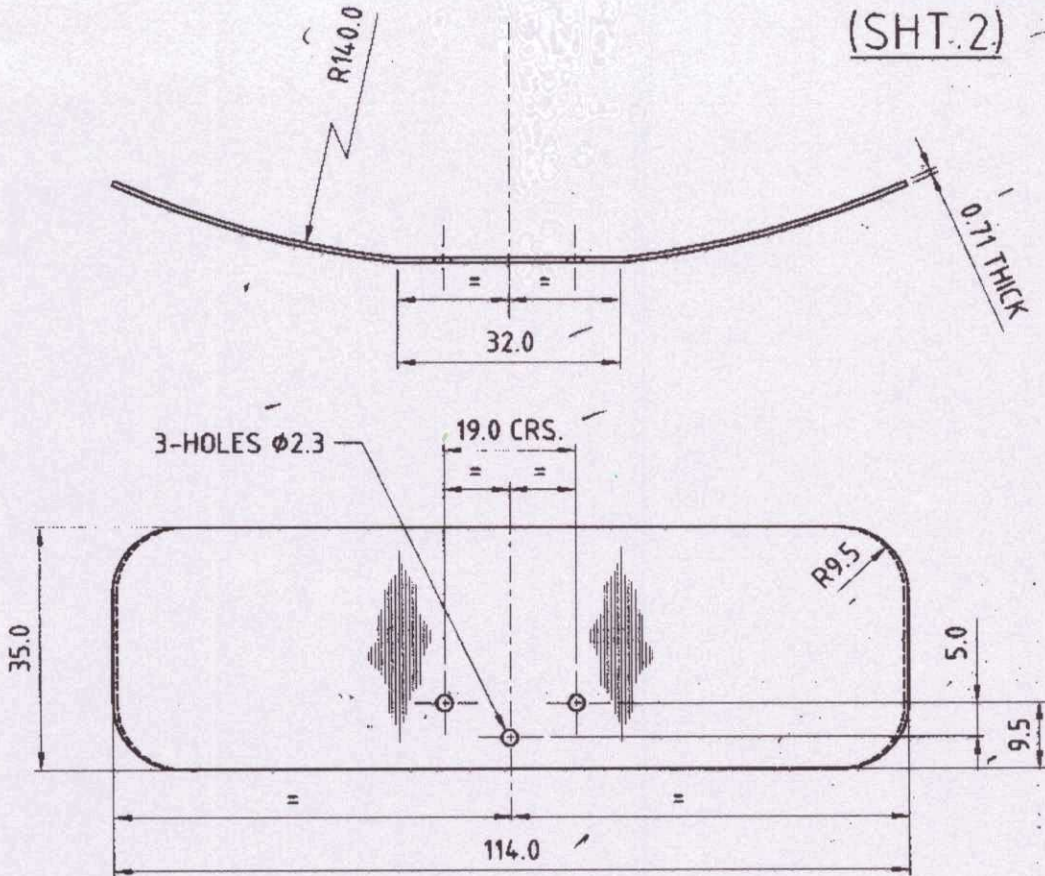
ORDNANCE FACTORY, DEHRADUN.

CHEST, SPARE PARTS, TOOLS & ACCESSORIES, 101C STRIP

DRG. No. :- CII-399/38 (SHT.2 OF 3)

MCT-3179
(SHT.2)

ORDNANCE FACTORY, DEHRADUN.



MATL. :- ~~CARBON~~ SPRING STEEL, BS:1449/En-43G.
FINISH :- TEMPERED & BROWNED.

PLATE

FOR TRADE USE
Date of Issue 04/01/21
R/S

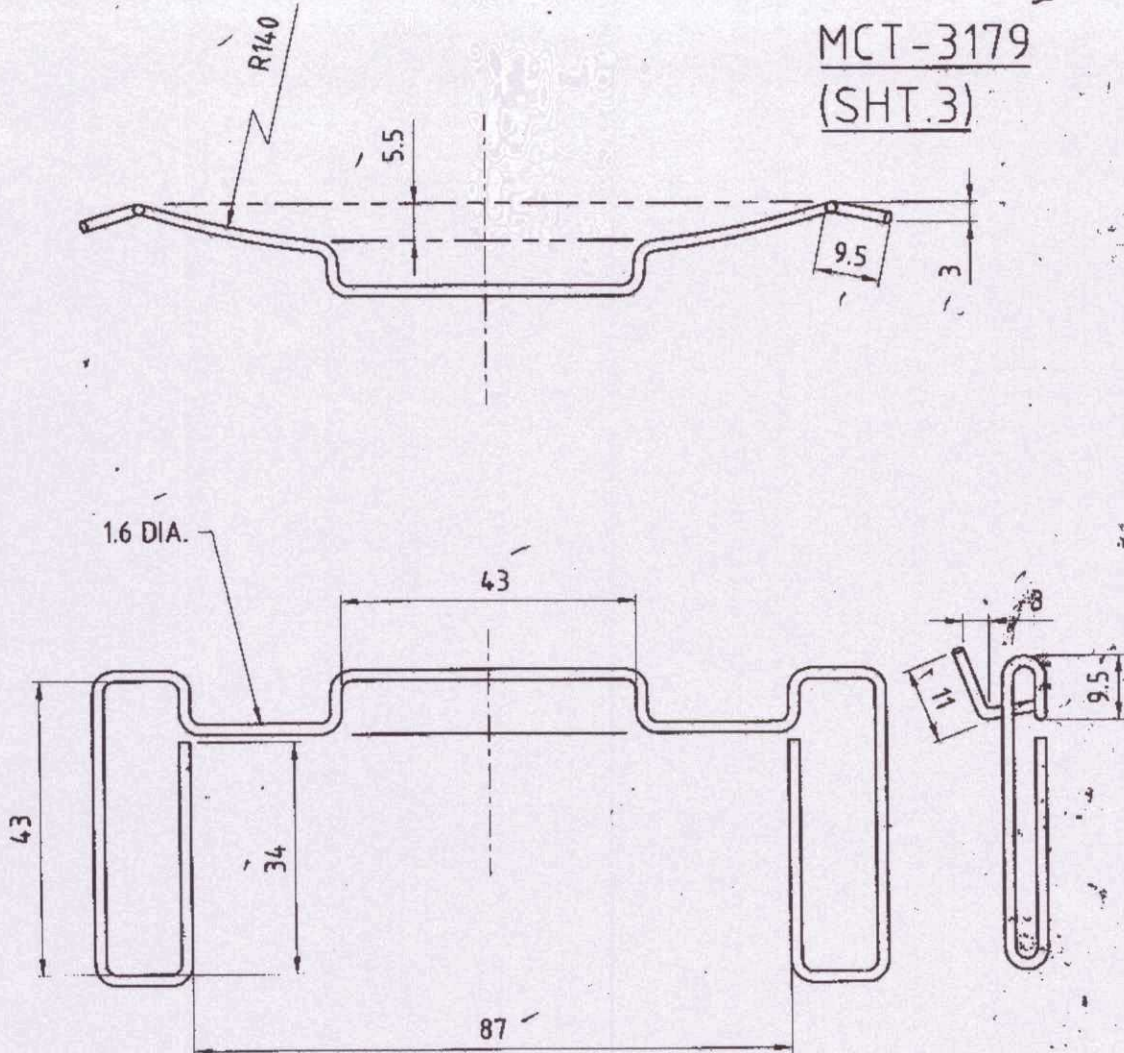
ALL DIMENSIONS ARE MM.
IMPORTANT DIMENSIONS MARKED THUS ●
INFORMATION MARKED THUS † TO BE MARKED ON.

		DT.-27.09.2011	SCALE- 1:1
		<u>MATL.</u>	<u>TREAT.</u>
		AS ABOVE	AS ABOVE
		DR.- R.K.SHARMA	
		TR.-	
		CH.- <i>[Signature]</i>	SHTS.- 3
			SHT. NO.- 2
		APPROVED	<u>DRAWING No.</u>
		<i>[Signature]</i>	MCT-3179
AMENDMENTS.		JWM/DO.	AWM/ASSY.
OFD/DO/002			

CHEST, SPARE PARTS, TOOLS & ACCESSORIES, 101C STRIP

DRG. No. :- CII-399/38 (SHT.3 OF 3)

MCT-3179
(SHT.3)



MATL. :- CARBON SPRING STEEL WIRE, BS:1429/En-42B.
FINISH :- SEE SHT. No. 1

FOR TRADE COPY
Date of Issue: 24/01/21
Rij

LOOP

ALL DIMENSIONS ARE MM.
IMPORTANT DIMENSIONS MARKED THUS ●
INFORMATION MARKED THUS † TO BE MARKED ON

	DR.- R.K.SHARMA	DT.-27.09.2011	SCALE: 1:1
	TR.-	MATL. AS ABOVE	TREAT. AS ABOVE
	CH.- <i>AK</i>	SHTS.- 3	SHT. NO.- 3
	APPROVED.	DRAWING No. - MCT-3179	
AMENDMENTS.	<i>AK</i>		
OFD/DO/002	JWM/DO. AWM/ASSY.		

ORDNANCE FACTORY, DEHRADUN.

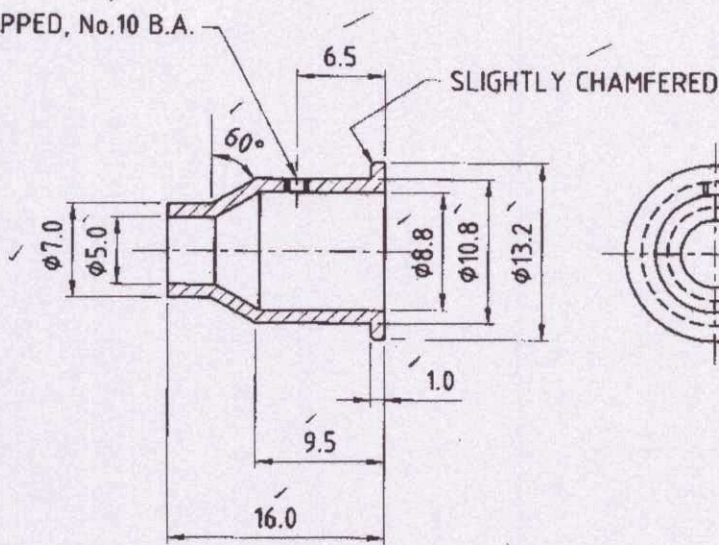
CHEST, SPARE PARTS, TOOLS & ACCESSORIES, 101C
SOCKET

DRG. No. :- CII-399/13

MCT-3189

ORDNANCE FACTORY, DEHRADUN.

HOLE, TAPPED, No.10 B.A.



MATL :- BRASS, Gde.-I HB OF IS:319-1989.
FINISH :- DULL BRONZE BLACK TO IS:1378-1979.

FOR TRADE ONLY
 Date of Issue: 24/01/11
 Raji

ALL DIMENSIONS ARE MM.
 IMPORTANT DIMENSIONS MARKED THUS ●
 INFORMATION MARKED THUS † TO BE MARKED ON

		DT.-20.09.2011	SCALE- 2:1
	DR.- R.K.SHARMA	MATL	TREAT
	TR.-	AS ABOVE	-
	CH.- <i>ast</i>	SHTS.- 1	SHT. NO.- 1
	APPROVED.	DRAWING No. - MCT-3189	
AMENDMENTS:	<i>ast</i>		
OFD/DO/002	JWM/DO. AWM/ASSY.		

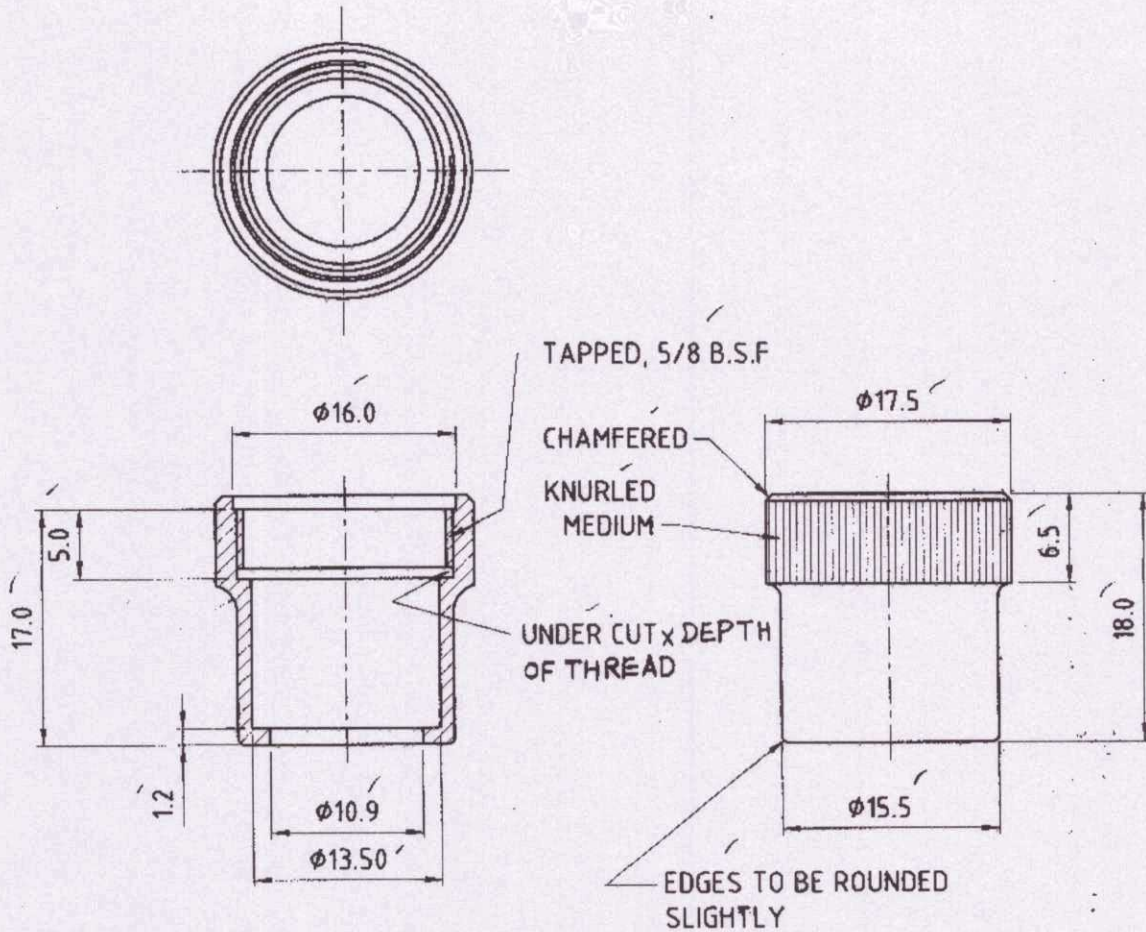
CHEST, SPARE PARTS, TOOLS & ACCESSORIES, 101C

NUT, CLAMPING -

DRG. No. :- CII-399/14.

MCT-3163

ORDNANCE FACTORY, DEHRADUN.



MATL. :- BRASS, IS:319-1968/CuZn42 Pb.3
FINISH :- DULL BLACK BRONZED

JOB TRADE OFFICE
 Date of Issu. 04/01/21
 Raj

ALL DIMENSIONS ARE MM.
 IMPORTANT DIMENSIONS MARKED THUS ●
 INFORMATION MARKED THUS † TO BE MARKED ON.

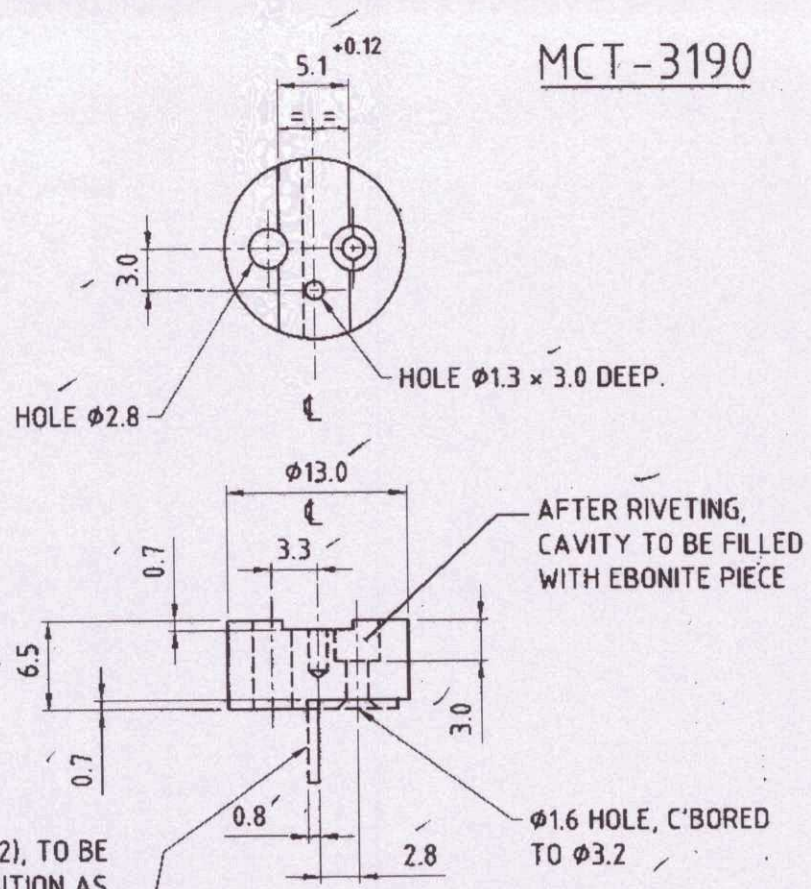
		DT.-22.09.2011	SCALE- 2:1
		DR.- R.K.SHARMA	MATL. AS ABOVE
		TR.-	TREAT. AS ABOVE
		CH.- <i>sh</i>	SHTS.- 1
			SHT-NO.- 1
APPROVED.		DRAWING No.-	
AMENDMENTS.		MCT-3163	
OFD/DO/002		<i>sh</i> JWM/DO.	<i>AWM</i> AWM/ASSY.

CHEST, SPARE PARTS, TOOLS & ACCESSORIES, 101C BUSH, INSULATING

DRG. No. :- CII-399/15 (SHT.1 OF 2)

ORDNANCE FACTORY, DEHRADUN.

MCT-3190



MCT-3190
CII-399/15 (SHT.2), TO BE RIVETED IN POSITION AS SHOWN IN CHAIN DOTTED LINES, WITH RIVET, COPPER, FLAT HD. $\phi 1.6 \times 5.0$ LONG---1

MATL. :- EBONITE OF IS:6693-1972.
FINISH :- CLEANED.

FOR TRADE OFF
Date of Issue: 04/01/21
Rji

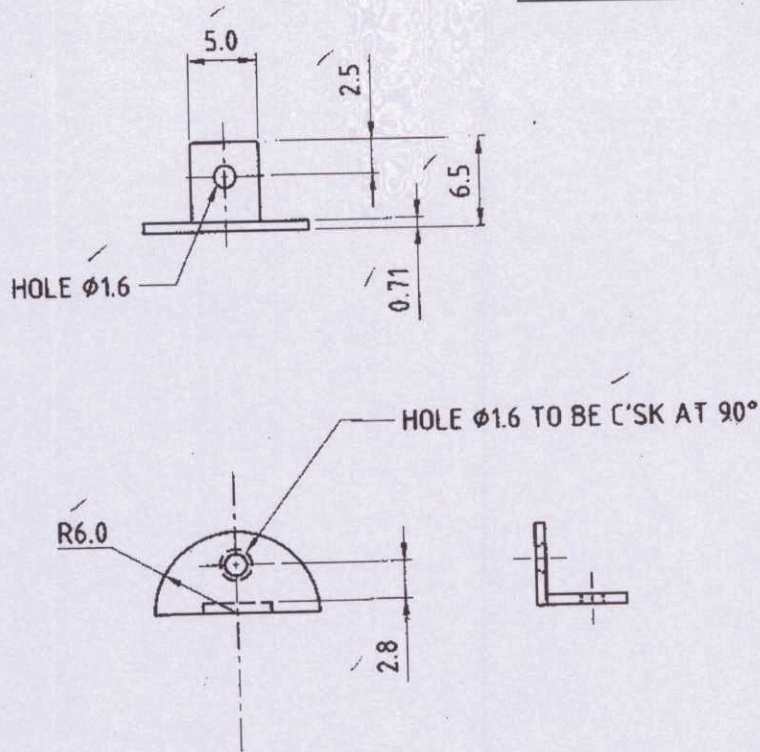
ALL DIMENSIONS ARE MM.
IMPORTANT DIMENSIONS MARKED THUS *
INFORMATION MARKED THUS † TO BE MARKED ON

	DR. - R.K.SHARMA	DT. - 27.09.2011	SCALE - 2:1
	TR. -	MATL. AS ABOVE	TREAT. -
	CH. - <i>[Signature]</i>	SHTS. - 2	SHT. NO. - 1
AMENDMENTS.	APPROVED.	DRAWING No. - MCT-3190	
OFD/DO/002	<i>[Signature]</i> JWM/DO. <i>[Signature]</i> AWM/ASSY.		

CHEST, SPARE PARTS, TOOLS & ACCESSORIES, 101C BUSH, INSULATING

DRG. No. :- CII-399/15 (SHT.2 OF 2)

MCT-3190



ORDNANCE FACTORY, DEHRADUN.

FOR TRADE USE
Date of Issue: 21/09/11
Raj

MATL. :- BRASS CuZn 30 HB OF IS:410-1977.
FINISH :- CLEANED.

PLATE BOTTOM

ALL DIMENSIONS ARE MM.
IMPORTANT DIMENSIONS MARKED THUS ●
INFORMATION MARKED THUS † TO BE MARKED ON

		D.T. - 21.09.2011	SCALE - 2:1
		MATL.	TREAT.
		AS ABOVE	-
		SHTS. - 2	SHT. NO. - 2
		DRAWING No. -	
		MCT-3190	
APPROVED.			
AMENDMENTS.			
OFD/DO/002		JWM/DO.	AWM/ASSY.

DR. - R.K.SHARMA

TR. -

CH. *oh*

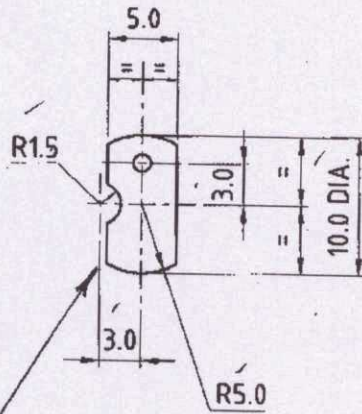
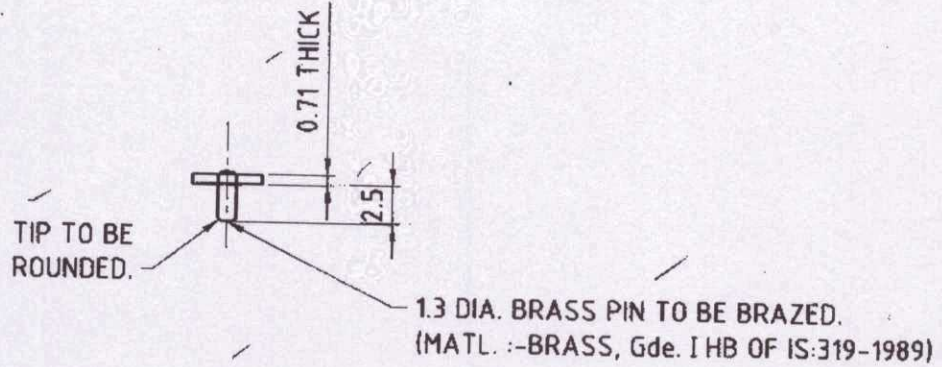
oh
AWM/ASSY.

CHEST, SPARE PARTS, TOOLS & ACCESSORIES, 101C
PLATE, WALL, ELECTRICAL

DRG. No. :- CII-399/16

MCT-3191

ORDNANCE FACTORY, DEHRADUN.



MATL. :- BRASS CuZn 30 HD OF IS:410-1977.
 FINISH :- CLEANED.

FOR TRADE USE
 Date of Issue: 04/01/11
 Ref:

ALL DIMENSIONS ARE MM.
 IMPORTANT DIMENSIONS MARKED THUS ●
 INFORMATION MARKED THUS † TO BE MARKED ON

		DT.-21.09.2011	SCALE- 2:1
	DR.- R.K.SHARMA	MATL: AS ABOVE	TREAT: AS ABOVE
	TR.-	SHTS.- 1	SHT. NO.- 1
	CH.- <i>al</i>	DRAWING No. - MCT-3191	
	APPROVED.		
AMENDMENTS.	<i>al</i>		
OFD/DO/002	JWM/DO.	<i>AWM</i>	AWM/ASSY.

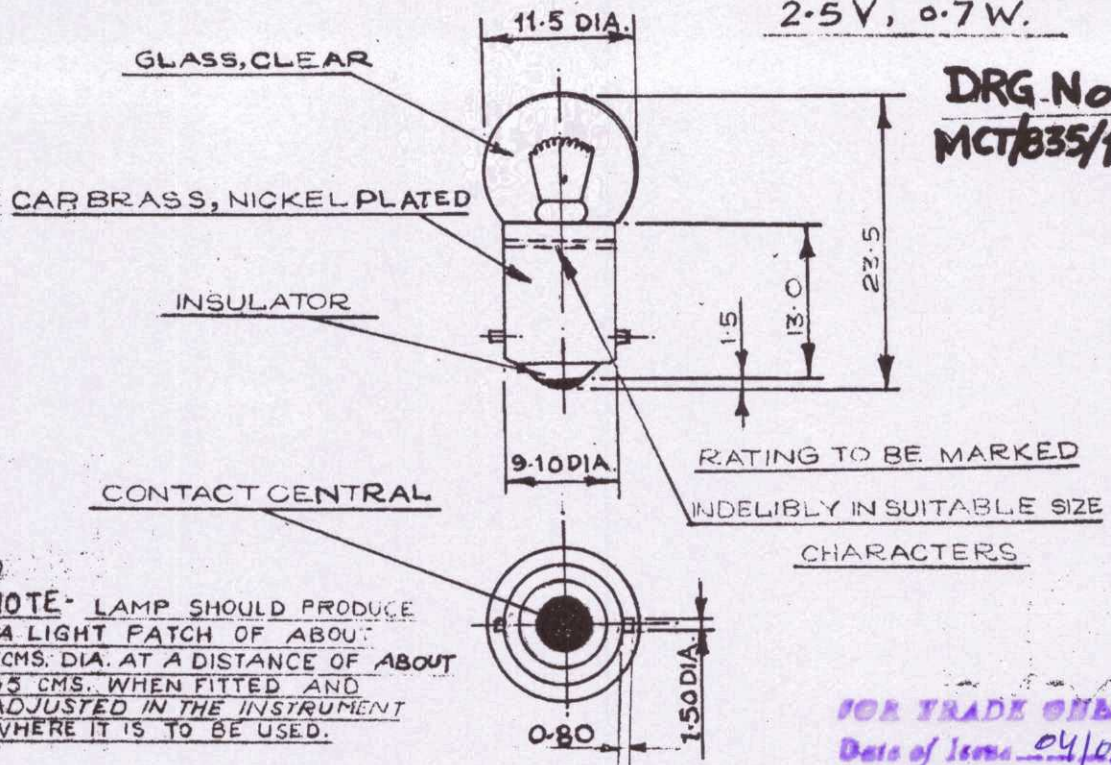
DEVICE F.C. ILLUMINATION 1A/2A.
(BOX SPARE PARTS)
LAMP FILAMENT 2.5V, 0.7W

DRG.No. CIL.SK.1197

(PROVISIONAL) CUTTING LINE

LAMP FILAMENT
2.5V, 0.7W.

DRG.No.
MCT/835/1



FOR TRADE ONLY
Date of Issue 04/01/21

ORDNANCE FACTORY DEHRA DUN

CATEGORY		INDICATOR LAMP				
TYPE		VACUUM.				
FILAMENT ARRANGEMENT		BOW.				
CAP	NAME	MCC				
	DESIGNATION	BA 9S/13 - TO BS 52				
LIFE ALLOWANCE.		"C"				
TEST PROCEDURE		AS PER SPECN. EL 1100 (METRIC) C				
REF. No.	RATING		LUMEN OUTPUT	AVERAGE LIFE IN HOURS	FINISH	SHAPE
CAT/PART.No.	VOLTS	WATTS				
X5/6240						
000012	2.5	0.7	7.8	10 HRS.	CLEAR	G
COEFFICIENT OF VARIATION		12 1/2% MAX.				
TOLERANCE ON WATTS		±12 1/2%				
AGEING PERIOD.		5 MINUTES				

3RD ANGLE PROJECTION
DIMENSIONS ARE IN M/M

DT. 25-7-79 SCALE 1:1
MATL. TREAT.

DR. <i>श्यामलका पासी</i>	AS STATED
TR.	REF. MPG. 5304 DT/3-7-79
CH. <i>श्यामलका पासी</i>	SHEETS 1 SHEET No. 1
APPROVED	DRG. No. MCT/835/1
⊕ D.A. NO. 3/82	A.E.D.O. A.M.O.P's
AMENDMENTS	

Based on the spec. provided by M/C
10/5/2020/12329

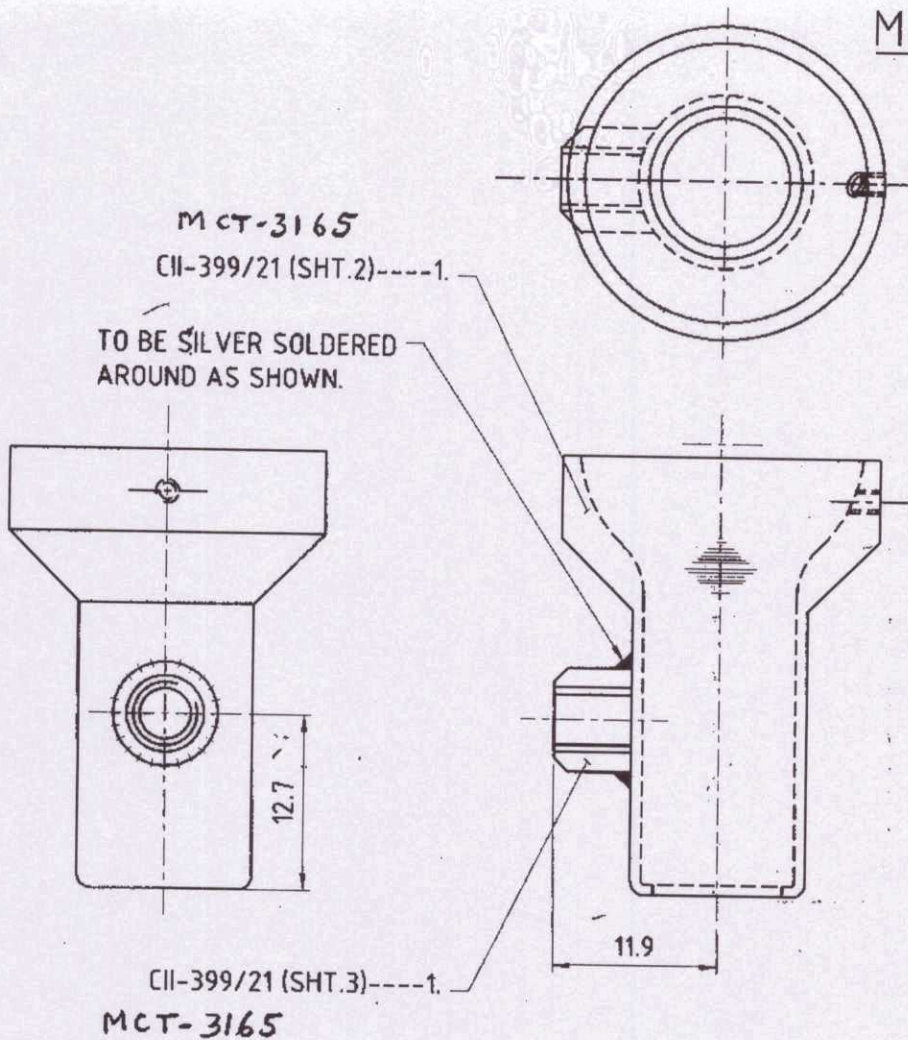
CHEST, SPARE PARTS, TOOLS & ACCESSORIES, 101C

CELL

DRG. No. :- CII-399/21 (SHT. No.1 OF 3)

MCT-3165

ORDNANCE FACTORY, DEHRADUN.



FOR TRADE USE
Date of Issue 04/09/14
Ref

ALL DIMENSIONS ARE MM.
IMPORTANT DIMENSIONS MARKED THUS ●
INFORMATION MARKED THUS † TO BE MARKED ON.

		DT.-23.09.2011	SCALE- 2:1
		DR.- R.K.SHARMA	MATL. TREAT.
		TR.-	SEE DETAILS SEE DETAILS
		CH.- <i>AK</i>	SHTS.- 3 SHT. NO.- 1
		APPROVED.	
AMENDMENTS.		<i>AK</i>	DRAWING No. - MCT-3165
OFD/DO/002		JWM/DO. AWM/ASSY.	

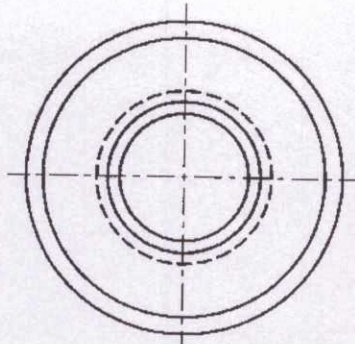
CHEST, SPARE PARTS, TOOLS & ACCESSORIES, 101C

CELL

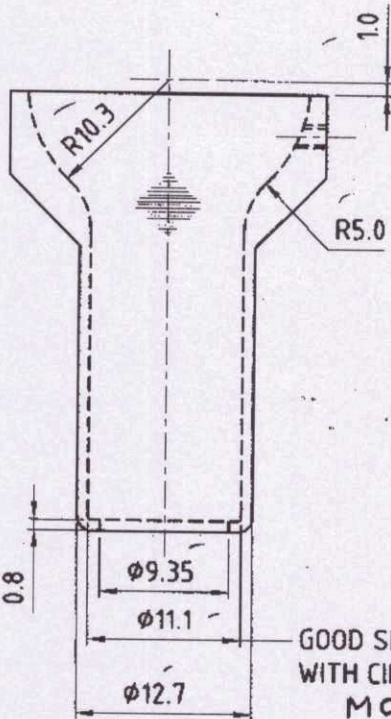
BRG. No. :- CII-399/21 (SHT. No.2 OF 3)

MCT-3165

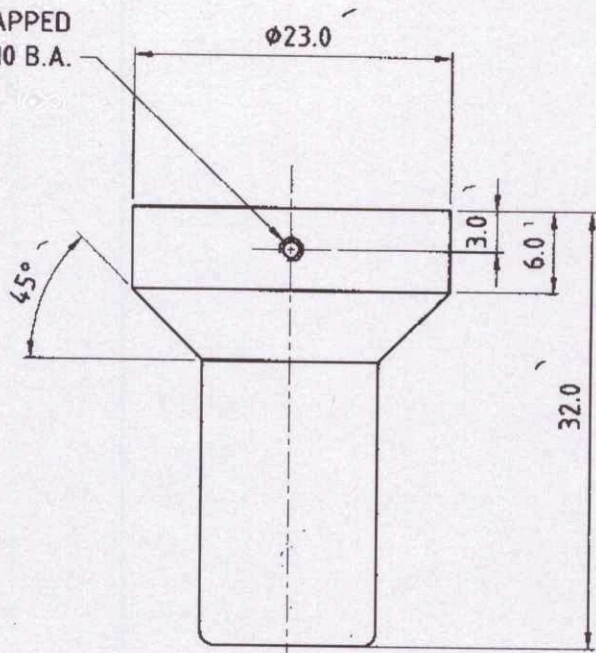
ORDNANCE FACTORY, DEHRADUN.



HOLE, TAPPED
No. 10 B.A.



GOOD SLIDE FIT
WITH CII-399/1.
MCT-3161



MATL :- BRASS, BS:2874/CZ -122 M.
FINISH :- BRONZED, BLACK DULL.

FOR TRADE ONLY
Date of issue 04/01/11
Rajiv

ALL DIMENSIONS ARE MM.
IMPORTANT DIMENSIONS MARKED THUS ●
INFORMATION MARKED THUS † TO BE MARKED ON.

	DR. - R.K.SHARMA	DT. - 22.09.2011	SCALE - 2:1
	TR. -	MATL SEE DETAIL	TREAT SEE DETAIL
	CH. <i>[Signature]</i>	SHTS - 3	SHT. NO. - 2
AMENDMENTS.	APPROVED.	DRAWING No. - MCT-3165	
OFD/D0/002	<i>[Signature]</i> JWM/DO. AWM/ASSY.		

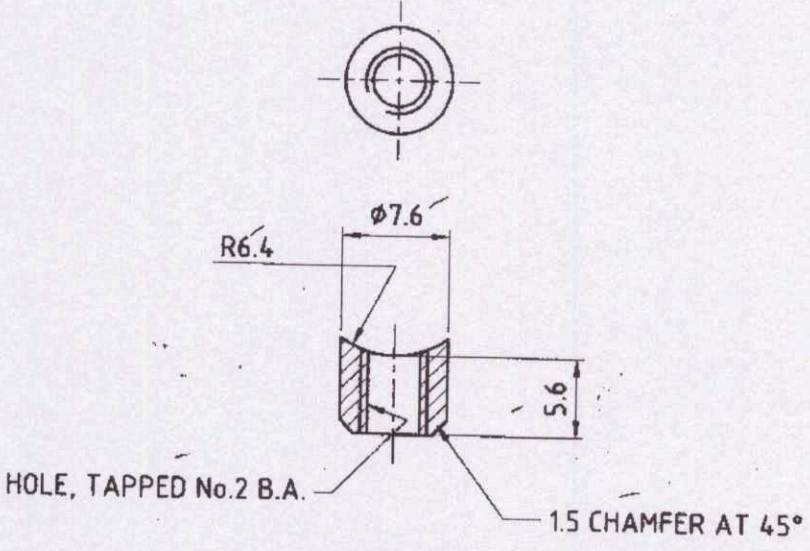
CHEST, SPARE PARTS, TOOLS & ACCESSORIES, 101C

CELL ✓

DRG. No. :- CII-399/21 (SHT. No.3 OF 3)

MCT-3165

ORDNANCE FACTORY, DEHRADUN.



MATL. :- BRASS, BS:2874/CZ -122 M.
FINISH :- CLEANED.

NUT ✓

JOB TRADE CHECK
 Date of Issue 04/01/21
Ref

ALL DIMENSIONS ARE MM.
 IMPORTANT DIMENSIONS MARKED THUS ●
 INFORMATION MARKED THUS † TO BE MARKED ON.

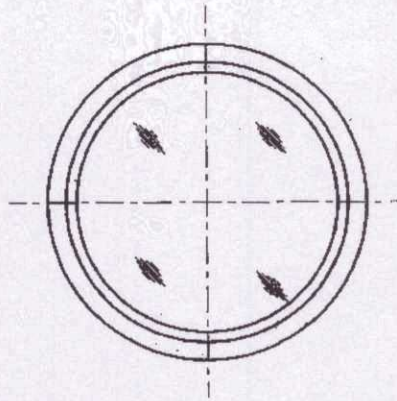
		DT.-22.09.2011	SCALE- 2:1
	DR.- R.K.SHARMA	<u>MATL.</u>	<u>TREAT</u>
	TR.-	AS ABOVE	AS ABOVE
	CH.- <i>JK</i>	SHTS.- 3	SHT. NO.- 3
	<u>APPROVED.</u>	DRAWING No - <u>MCT-3165</u>	
AMENDMENTS.	<i>JK</i>		
OFD/DO/002	JWM/DO. <i>AK</i> AWM/ASSY.		

CHEST, SPARE PARTS, TOOLS & ACCESSORIES, 101C

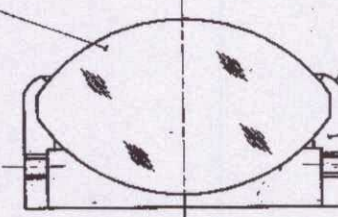
CELL

DRG. No. :- CII-399/36 (SHT.1 OF 2)

MCT-3177
(SHT.1)



CII-399/22-----1.
(MCT-949)



CELL TO BE SPUN,
AS SHOWN.

CII-399/36 (SHT.2)-----1.
(MCT-3177 SHT.2)

FOR TRADE USE
Date of Issue 04/05/11
Ref

ALL DIMENSIONS ARE MM.
IMPORTANT DIMENSIONS MARKED THUS ●
INFORMATION MARKED THUS † TO BE MARKED ON.

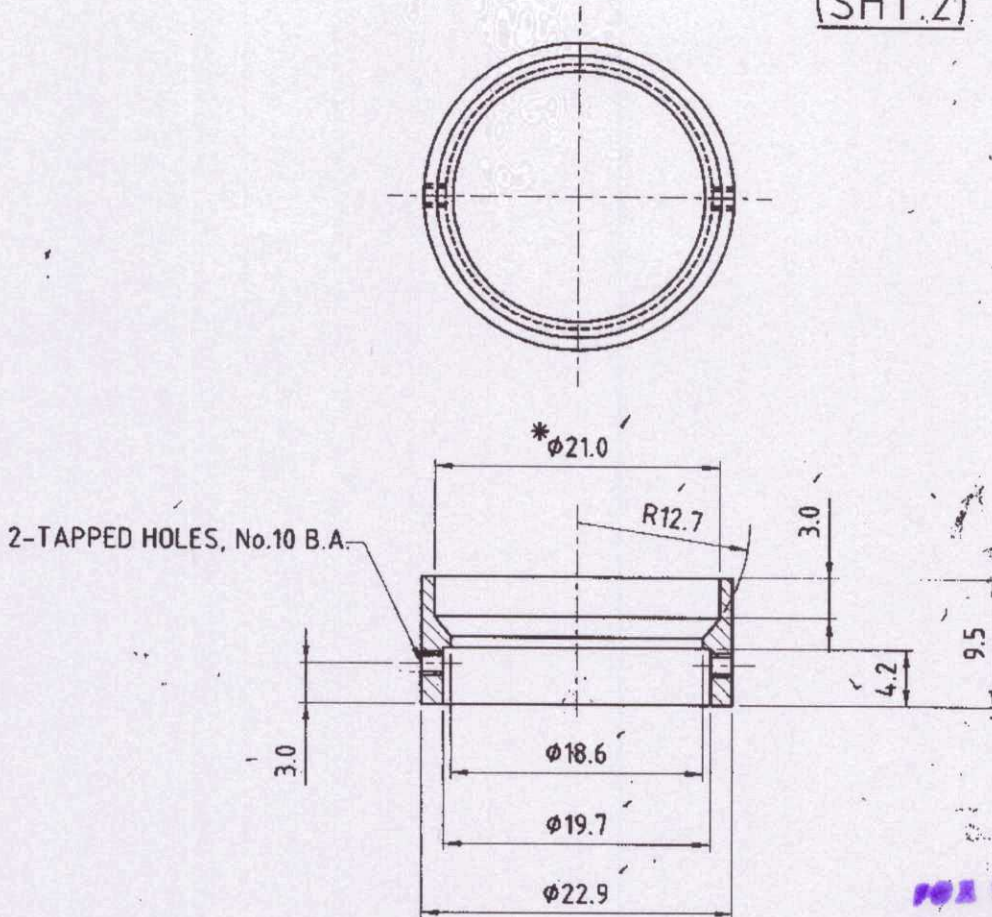
		DT.-26.09.2011	SCALE- 2:1
		MATERIAL	TREATMENT
		SEE DETAILS	SEE DETAILS
		DR.- R.K.SHARMA	SHTS.- 2
		TR.-	SHT. NO - 1
		CH.- <i>AK</i>	
APPROVED		DRAWING No -	
<i>AK</i>		MCT-3177	
AMENDMENTS.	JWM/DO.	<i>AK</i>	AWM/ASSY.
OFD/DO/002			

ORDNANCE FACTORY, DEHRADUN.

CHEST, SPARE PARTS, TOOLS & ACCESSORIES, 101C CELL

DRG. No. :- CII-399/36 (SHT.2 OF 2)

MCT-3177 -
(SHT.2)



FOR TRADE O/M
Date of Issue - 04/01/11
Raj

MATL. :- BRASS, BS:2874/CZ-122 M.
FINISH :- BRONZED BLACK, DULL.

* TO SUIT CII-399/22.
MCT-949

ALL DIMENSIONS ARE MM.
IMPORTANT DIMENSIONS MARKED THUS ●
INFORMATION MARKED THUS † TO BE MARKED ON.

		DT.-26.09.2011	SCALE- 2:1
	DR.- R.K.SHARMA	MATL.	TREAT.
	TR.-	AS ABOVE	AS ABOVE
	CH.- <i>at</i>	SHTS.- 2	SHT. NO.- 2
	APPROVED.	DRAWING No. - MCT-3177	
AMENDMENTS.	<i>at</i>		
OFD/DO/002	JWM/DO. AWM/ASSY.		

ORDNANCE FACTORY, DEHRADUN.

DEVICE F.C. ILLUMINATION 1A.

CAT PT. No 1290-000027

LENS

DCC(I) No. 3330 - I

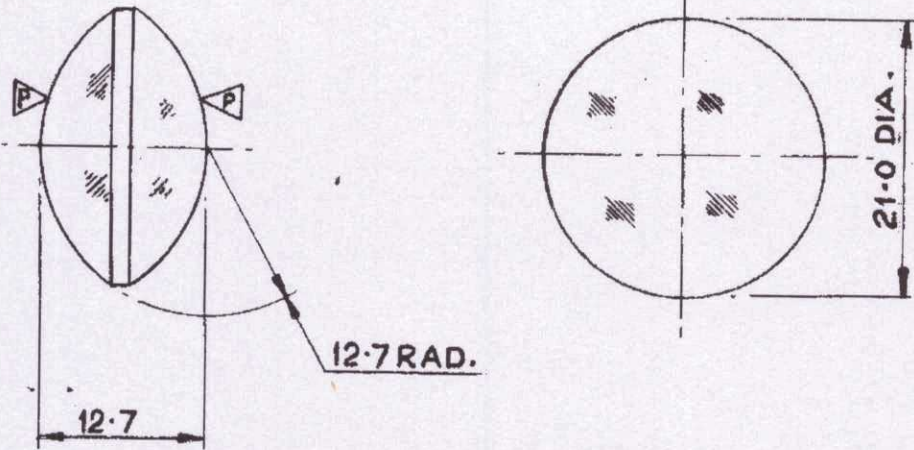
DRG. No. CII 399/22

CUTTING LINE

LENS

MCT- 949

ORDNANCE FACTORY DEHRA DUN



MATL. :— GLASS, B.S.C.

FINISH :— SURFACE MARKED \blacktriangle POLISHED
OTHER SURFACES GROUND

DIMENSIONS ARE IN MM.

FOR TRADE ONLY

Date of issue

04/01/82
Ray

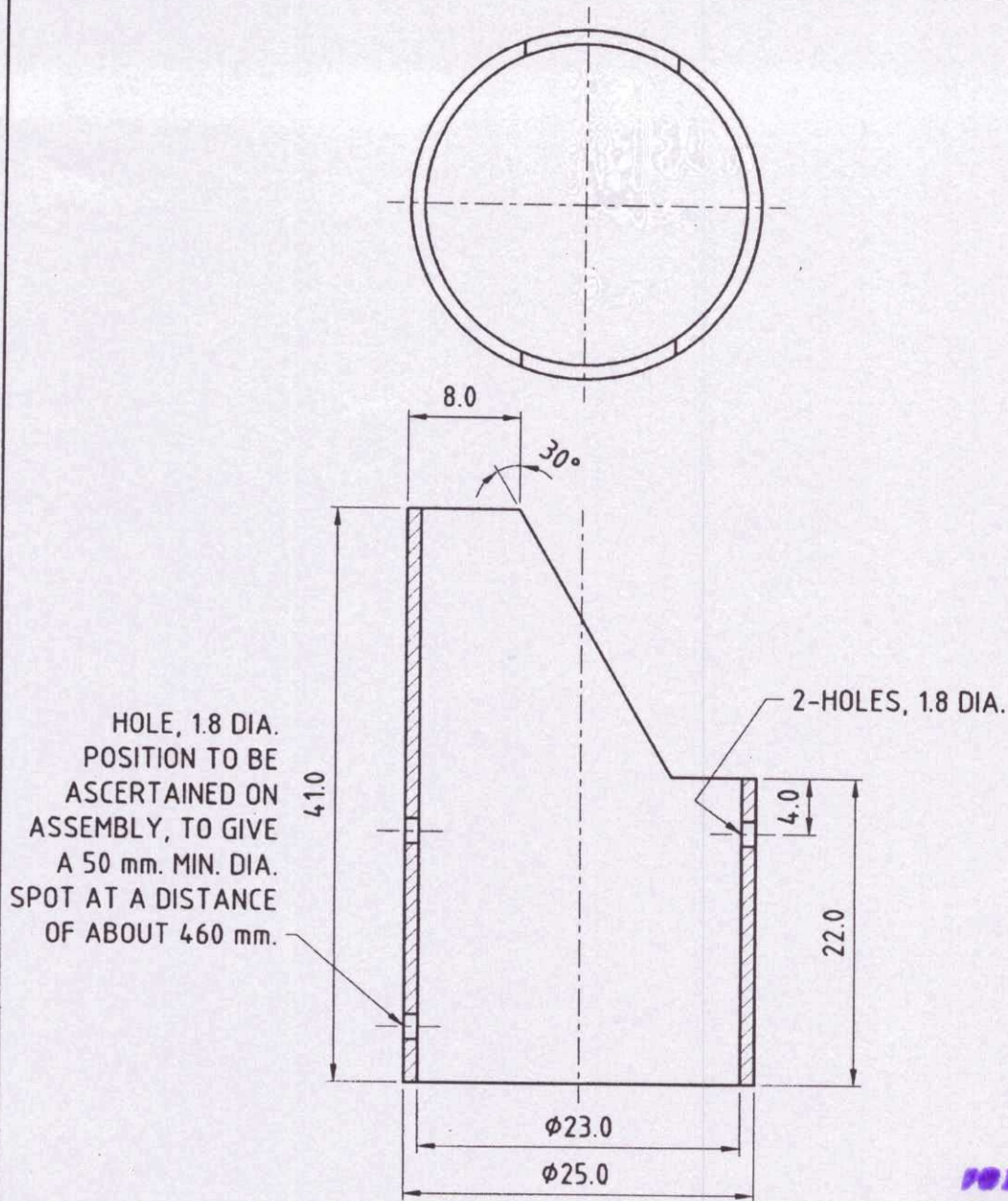
		Dt 13-9-82	SCALE 2:1
	DR. <i>R. Bhandari</i>	MATL.	TREAT.
	TR.	AS STATED	—
	CH.	MPG 4801	DT. 10.9.82
	APPROVED	SHEETS 1	SHE' No. 1

CHEST, SPARE PARTS, TOOLS & ACCESSORIES, 101C

HOOD

DRG. No. :- CII-399/37

ORDNANCE FACTORY, DEHRADUN.



MATL. :- BRASS TUBE, IS:407 ALLOY Cu Zn 30 AS.
FINISH :- INSIDE PAINTED WHITE, OUTSIDE PAINTED SERVICE COLOUR ON ASSEMBLY.

FOR TRADE ONLY
Date of Issue: 04/01/2024
Raj

ALL DIMENSIONS ARE MM.

IMPORTANT DIMENSIONS MARKED THUS ●

INFORMATION MARKED THUS † TO BE MARKED ON.

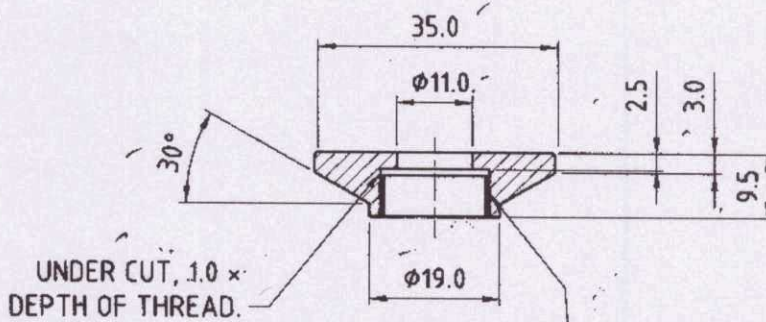
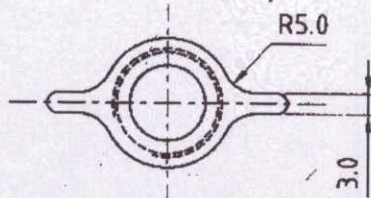
		DT.-27.09.2011	SCALE- 2:1
	DR.- R.K.SHARMA	MATL.	TREAT.
	TR.-	AS ABOVE	AS ABOVE
	CH.- <i>[Signature]</i>	SHTS.- 1	SHT. NO.- 1
	APPROVED.		DRAWING No. - MCT-3178
AMENDMENTS.	<i>[Signature]</i>	<i>[Signature]</i>	
OFD/DO/002	JWM/DO.	AWM/ASSY.	

CHEST, SPARE PARTS, TOOLS & ACCESSORIES, 101C

FLY NUT

DRG. No. :- CII-399/27 ✓

MCT-3170



32 T.P.I. WHIT. *
 MAJOR DIA. 15.875
 MINOR DIA. 14.859
 (MEDIUM FIT)
 * DESIGN SIZE.

MATL :- BRASS, BS:2874-1969-CZ 122 M.
FINISH :- BRONZED, BLACK DULL.

FOR TRADE ONLY
 Date of Iss. 04/01/11
 Raj

ALL DIMENSIONS ARE MM.
 IMPORTANT DIMENSIONS MARKED THUS ●
 INFORMATION MARKED THUS † TO BE MARKED ON.

		DT.-24.09.2011	SCALE= 1:1
		MATL	TREAT.
		AS ABOVE	AS ABOVE
		SHTS.- 1	SHT. NO.- 1
		APPROVED.	
AMENDMENTS:		DRAWING No.-	
OFD/DO/002		MCT-3170	
		JWM/DO.	AWM/ASSY.

ORDNANCE FACTORY, DEHRADUN.

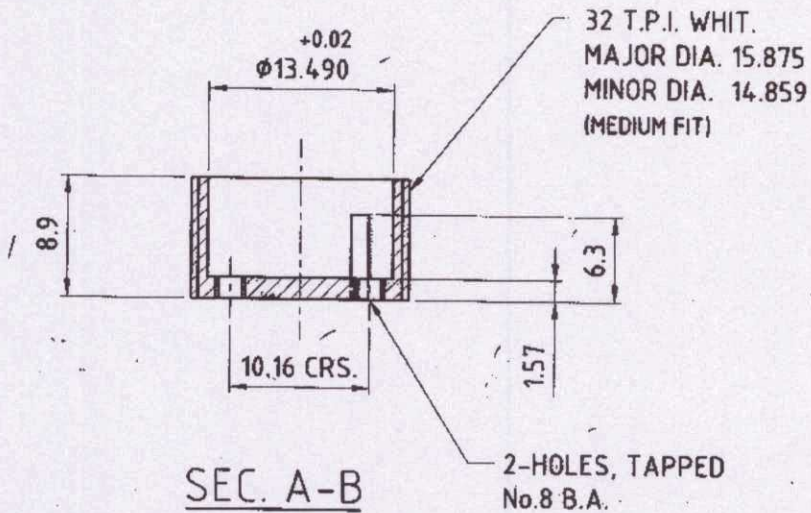
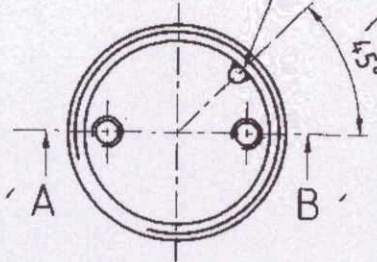
CHEST, SPARE PARTS, TOOLS & ACCESSORIES, 101C

CUP

DRG. No. :- CII-399/28

MCT-3171

PIN, STEEL, 1.25 DIA., TO BE DRIVEN IN POSITION & SOLDERED AS SHOWN, AT 6.12 P.C.R.



SEC. A-B

MATL. :- BRASS, CuZn 4:2 Pb₂ TO IS:3488 SOFT SOLDER IS:193-1982.

FINISH :- BRONZED, BLACK, DULL.

FOR TRADE USE

Date of Issue: 24/09/2011

Raj

ALL DIMENSIONS ARE MM.

IMPORTANT DIMENSIONS MARKED THUS ●

INFORMATION MARKED THUS † TO BE MARKED ON.

	DR.- R.K.SHARMA	DT.-24.09.2011	SCALE- 2:1
	TR.-	MATL. AS ABOVE	TREAT. AS ABOVE
	CH.- <i>AK</i>	SHTS.- 1	SHT. NO.- 1
	APPROVED.	DRAWING No. :- MCT-3171	
AMENDMENTS.	<i>AK</i>		
OFD/DO/002	JWM/DO. AWM/ASSY.		

ORDNANCE FACTORY, DEHRADUN.

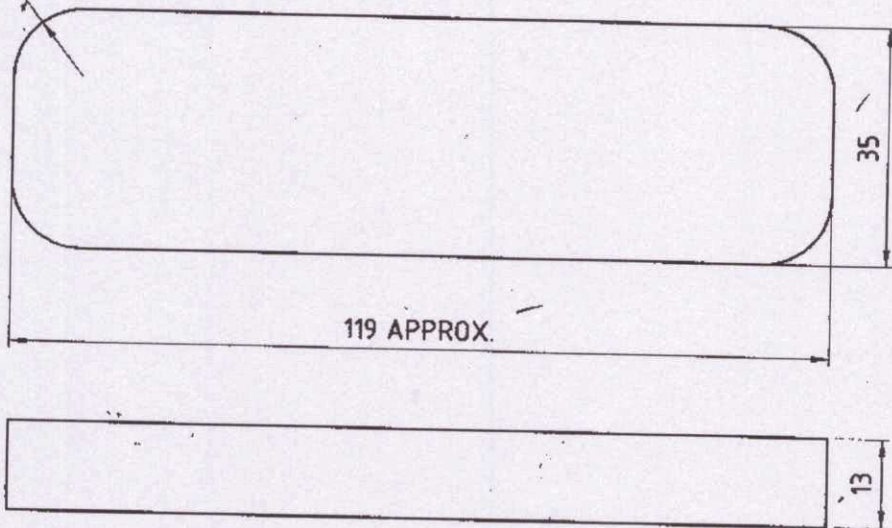
CHEST, SPARE PARTS, TOOLS & ACCESSORIES, 101C
CUSHION

DRG. No. :- CII-399/31.

MCT-3174

ORDNANCE FACTORY, DEHRADUN.

R10



MATL. :- SPONGE RUBBER, VULCANIZED, IND/ME/645 OR LATEX FOAM RUBBER, IS:1741 (LATEST Gde "B").
FINISH :- CLEANED.

FOR TRADE ONLY
 Date of Issue: 02/10/24
 Rg

ALL DIMENSIONS ARE MM.
 IMPORTANT DIMENSIONS MARKED THUS ●
 INFORMATION MARKED THUS † TO BE MARKED ON.

		DT.-22.09.2011	SCALE- 1:1
	DR.- R.K.SHARMA	MATL.	TREAT.
	TR.-	AS ABOVE	AS ABOVE
	CH.- <i>ak</i>	SHTS.- 1	SHT. NO.- 1
	APPROVED.	DRAWING No. - <u>MCT-3174</u>	
AMENDMENTS.	<i>ak</i>		
OFD/DO/002	JWM/DO. AWM/ASSY.		