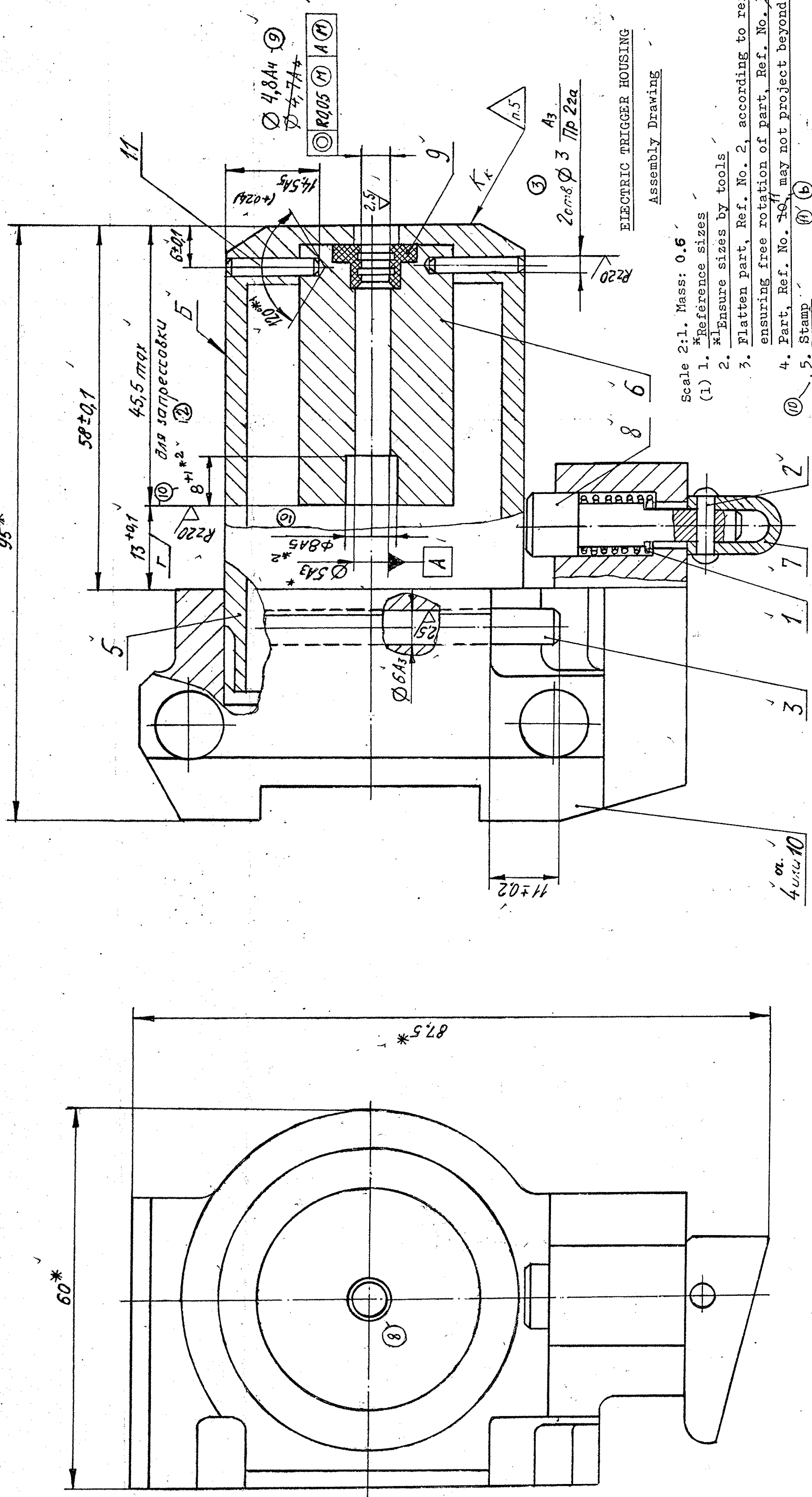


2A42.06.04.005



Scale 2:1. Mass: 0.6

- (1) 1. *Reference sizes
- 2. *1 Ensure sizes by tools
- 3. Flatten part, Ref. No. 2, according to reference sample ensuring free rotation of part, Ref. No. 7.
- 4. Part, Ref. No. 10, may not project beyond surface B
- 5. Stamp (a) (b)
- (2) for press-fitting
- (3) 2 holes $\varnothing 3$ $\text{Ipe}2a$

⑩ *2 CHECK THE DIMS. AFTER ENSURING THE

DIM. I

FINAL DRG FOR MFR. AT OFI

DATE 2/93
 UP-DATED
 CHECKED
 FIM-PROJ
 SCT...
 DGM / PROJ

11	763T-85	14.545	14.545
b	5124K2-8	14.545	14.545
10	551T-84	14.545	14.545
a	14.545	14.545	14.545

2A42.06.04.005

КОРПУС
 ЭЛЕКТРОСПУСК
 СБОРОЧНИЙ чертёж

№	№	№	№
1	2	3	4
0,6	0,6	0,6	0,6
2:1	2:1	2:1	2:1

15.02.93