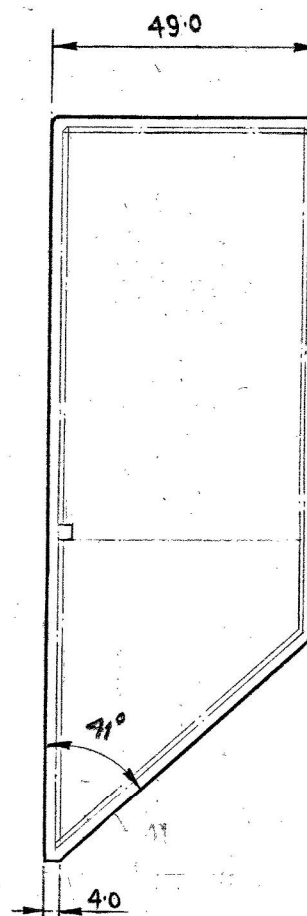
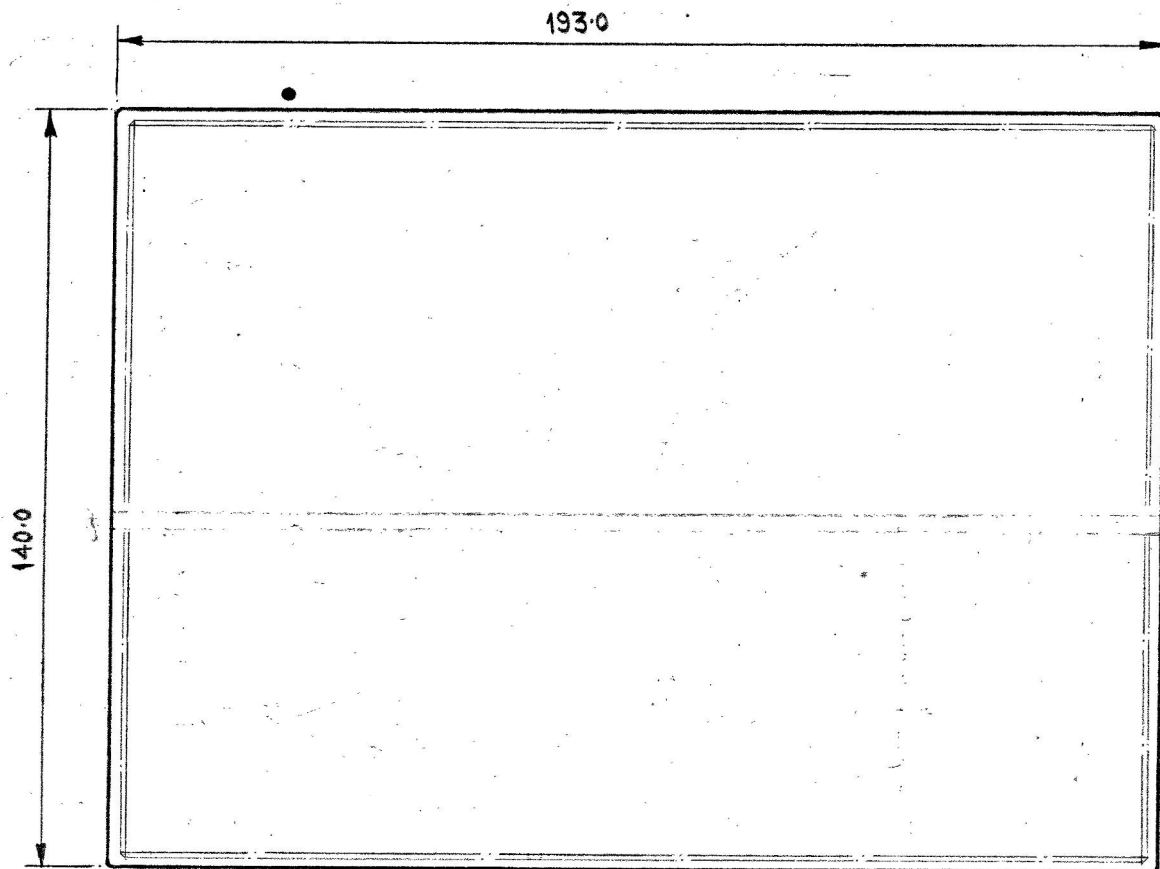


THIRD ANGLE PROJECTION

IF IN DOUBT 'ASK'

+ ODD/C/925/1



MATL :- GLASS TYPE - BSC - 510644
 Nd - 150970
 V - 64.44

GRADE OF GLASS :- AS PER IS:1400/1960
 GRADE 'B' FOR STRIAE &
 GRADE 'C' FOR BUBBLES
 GENERAL TOLERANCE $\pm 3.0 \text{ mm}$
 -0.00 mm
 CHAMFER ON ALL
 CORNERS 1.0 mm.

* GLASS TYPE - BSC - 517642 (BK-7)
 Nd - 151680, V - 64.17

NOTE :- THE MOULDS WILL BE HOMOGENEOUS, FREE FROM
 FELTS, FOLDS AND FROM EDGE OR SURFACE CRACKS.
 THESE WILL BE REASONABLY FREE FROM STRIAE, REAM,
 CORDS BUBBLES AND SEEDS ONLY LIGHT STRIAE WHICH
 ARE SENSIBLY PARALLEL TO THE FACE OF THE MOULDS
 MAY BE ACCEPTED ON THE AVERAGE NOT MORE THAN
 ONE BUBBLE PER 16 CUBIC CENTIMETRES OF GLASS.
 THE SIZE OF ANY INDIVIDUAL BUBBLE NOT EXCEEDING
 0.08 mm IN DIA. MAY BE ACCEPTED.

ALL DIMENSIONS ARE IN mm.

आयुध निर्माणी
 ORDNANCE FACTORY
 देहरादून
 DEHRADUN

प्राप्त. Rakesh
 अनु. TE
 पड़ता. CH
 अनुमोदित APPROVED
 आर. सी. / डी.ओ. का प्र. / पी. 1 C/00

DRG. NO. IRDE-1802/1
 ज़ुमाइका नाम TITLE OF
 सक्रिया OPERATION

COMMANDER DAY EPISCOPÉ
 PRISM (GLASS MOULDS)

D.A. No 20/2005
 DT. 16-10-2005
 AMENDMENTS
 OFD/00/002

दिनांक DT. 16-5-97
 पैमाना SCALE 1:1
 धातु/सामग्री MATL AS STATED
 व्यवहार TREAT -
 प्रतियाँ SHEETS 1
 प्रति संख्या SH. No 1
 ड्राइंग नं०
 DRG. No ODD/C/925/1

STORE DRG. RETURNED TO P.O.

26/10/97 DT. 13-5-97