

DRAWING NUMBER

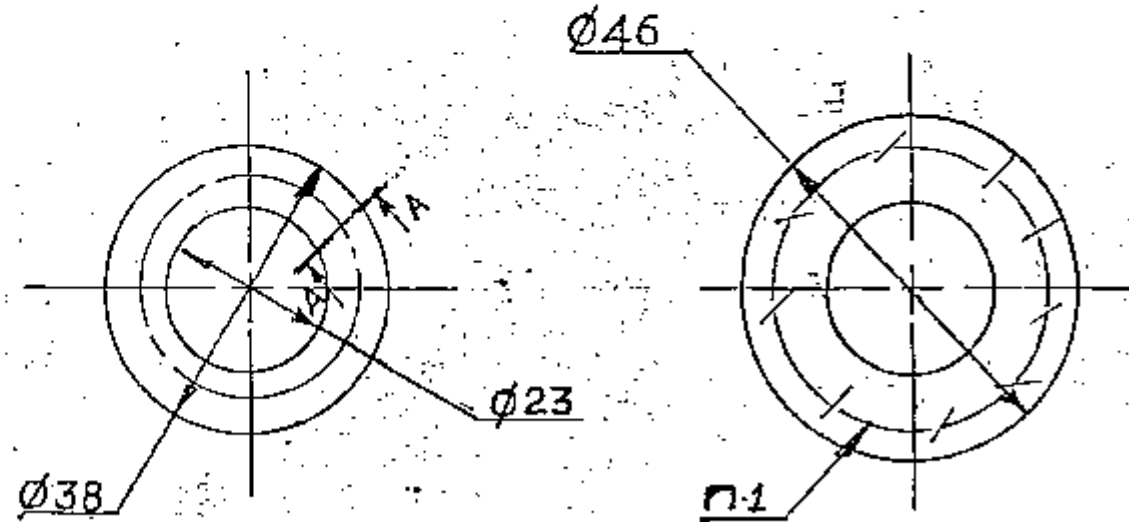
329-47-1

EXPLANATORY NOTE :

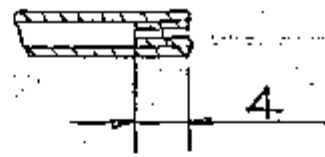
A - A

SCALE 2 : 1

BLANK



A - A SCALE 2:1



STICH WITH SILK THREAD No:13,  
GOST 22665-77

2. MATERIAL QUOTED : CAPRON SIEVE No:64 OCT 17-46-71

CAPRON FABRICS FOR SEIVES

64 = FIBRE NO

TECHNICAL REQUIREMENTS :

- a) THICKNESS OF FIBRE WARP AND WEFT = 2.22
- b) WEIGHT OF FABRIC SQUARE METER IN gm, (min) = 25.0
- c) TEARING FORCE OF FIBRE STRIP 50x200mm } = 20.0  
IN Kgf min WARP & WEFT
- d) NUMBER OF THREADS PER 10 cm.

WARP = 640 ± 38

WEFT = 640 ± 51

PILOT SAMPLE SHOULD BE APPROVED BY A H S P BEFORE BULK PRODUCTION

EST. WT. 0.115 Kg TO BE STAMPED OR MARKED WHERE INDICATED THUS # 1 LETTERS)  
1000 PIECES

ALL SHARP EDGES AND CORNERS TO BE REMOVED UNLESS OTHERWISE STATED MACHINED CORNERS TO HAVE R OUT SIDE INSIDE EQUIVALENT CHAMFERS ARE PERMISSIBLE.

DRN	<i>W. K. Kulkarni</i>
CHKD	<i>W. K. Kulkarni</i>
TCD	<i>W. K. Kulkarni</i>
APPD	<i>W. K. Kulkarni</i>
DATE	25-11-89
SCALE	1 : 1
DIMENSIONS IN mm	
TOLERANCE ON DIMNS	
UNLESS OTHERWISE STATED IS:2102-69	
ALL THREADS TO CONFORM TO	
ISSUE DATE	
NATURE OF AMENDMENTS	

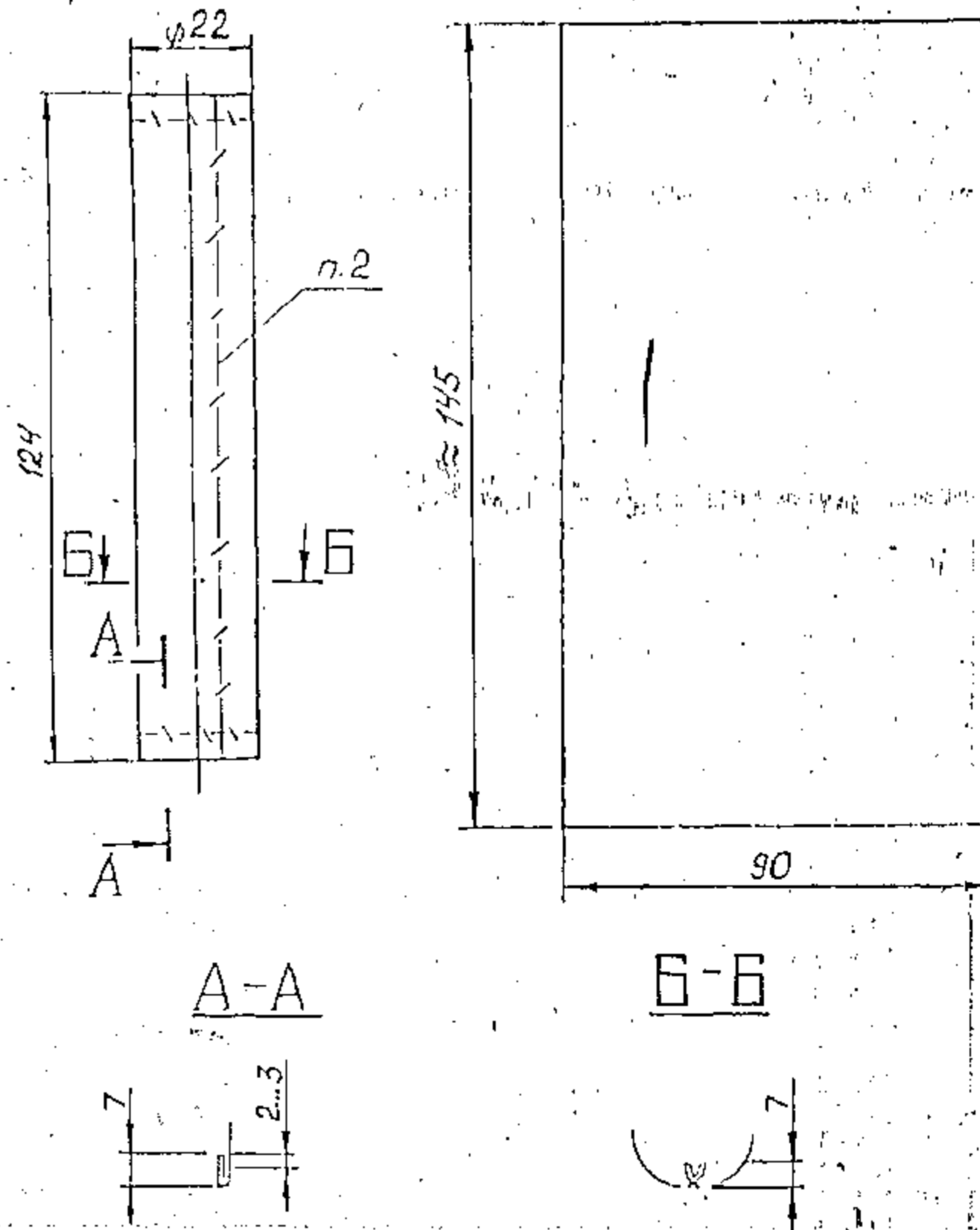
MATERIAL:- CAPRON SIEVE No.64 OCT 17-46-71	USED ON CS 329-07-2
CONTROLLERATE OF QUALITY ASSURANCE(HEAVY VEHICLES) AVADI	
	TITLE <b>CASING FLANGE</b>
D S CAT NUMBER	DRAWING NUMBER <b>329-47-1</b>



SIZE A3



*Развертка*  
DEVELOPMENT



1. ALTERNATE MATERIAL IS SILK CLOTH FOR SIEVES NO.55 AND N 61 GOST 4403-77.
2. STICH WITH SILK THREAD NO.13, GOST. 22665-77, THE STICHES SHOULD BE STRONG.
3. THE CASING SHOULD BE FREELY FIT ON TO THE FILTER SCREEN.

PLOT SAMPLE SHOULD BE APPROVED BY A H S P BEFORE BULK PRODUCTION.

EST. WT. 0.475 Kg  
1000 PIECES

TO BE STAMPED OR MARKED WHERE INDICATED THUS # ( LETTERS)

ALL SHARP EDGES AND CORNERS TO BE REMOVED UNLESS OTHERWISE STATED MACHINED CORNERS TO HAVE R OUTSIDE R INSIDE EQUIVALENT CHAMFERS ARE PERMISSIBLE.

EXPLANATORY NOTE :

4. MATERIAL QUOTED : CAPRON SIEVE No:64 OCT 17-46-71

CAPRON FABRICS FOR SIEVES

64 = FIBRE No.

TECHNICAL REQUIREMENTS :

- a) THICKNESS OF FIBRE WARP AND WEFT = 2.22
- b) WEIGHT OF FABRIC, SQUARE METER IN gm min = 25.0
- c) TEARING FORCE OF FIBRE STRIP 50x200mm IN Kgf min WARP & WEFT } = 29.0
- d) NUMBER OF THREADS PER 10 cm.  
WARP = 640 ± 38  
WEFT = 640 ± 51

DRN	<i>[Signature]</i>	MATERIAL :-	USED ON :-
CHD	<i>[Signature]</i>	CAPRON SIEVE No:64:	Cb 329-07-2
TCD	<i>[Signature]</i>	OCT 17-46-71	
APPD	<i>[Signature]</i>	(CONTROLLERATE OF QUALITY ASSURANCE (HEAVY VEHICLES))	
DATE	25-11-89	A V A D I	
SCALE	1 : 1	TITLE	
DIMENSIONS IN mm.		FILTER CASING	
TOLERANCE ON DIMS UNLESS OTHERWISE STATED IS 2102-59		D S CAT NUMBER	DRAWING NUMBER
ALL THREADS TO CONFORM TO			329-48-1
ISSUE	DATE	NATURE OF AMENDMENTS	



DRAWING NUMBER

329-49-1

EXPLANATORY NOTE :1. MATERIAL QUOTED : SILK No:3 GOST 1674-77.

No:3 = THREAD DESIGNATION.

SCOURED AND DYED TWISTED SILK THREAD.

TECHNICAL REQUIREMENTS :

(1) THREAD TEXTURE AS PER GOST 16736-71 = 3.23 TEX X 45 S1 320 X 3Z 215.

WHERE S AND Z ARE PROCESSES OF TWISTING.

(2) TYPE OF FINISH = SCOURED.

(3) RESULTANT LINEAR DENSITY, TEX = .377 (max)

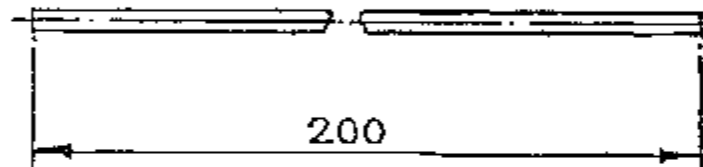
(4) BREAKING POINT = 13 Kg

(5) ELONGATION AT RUPTURE % = 21.5 (min)

(6) NORMAL FINAL TWIST = 215±25

(7) FAT AND SOAP CONTENT BY WEIGHT % = 17 (max)

(8) STANDARD MOISTURE CONTENT = 9 %



KVD No. 66754



SIZE A3

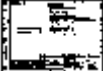
PLOT SAMPLE SHOULD BE APPROVED BY A H S P BEFORE BULK PRODUCTION

EST. WT.  
0.001 KG  
100 PIECES

TO BE STAMPED OR MARKED WHERE INDICATED THUS # 1 LETTERS)

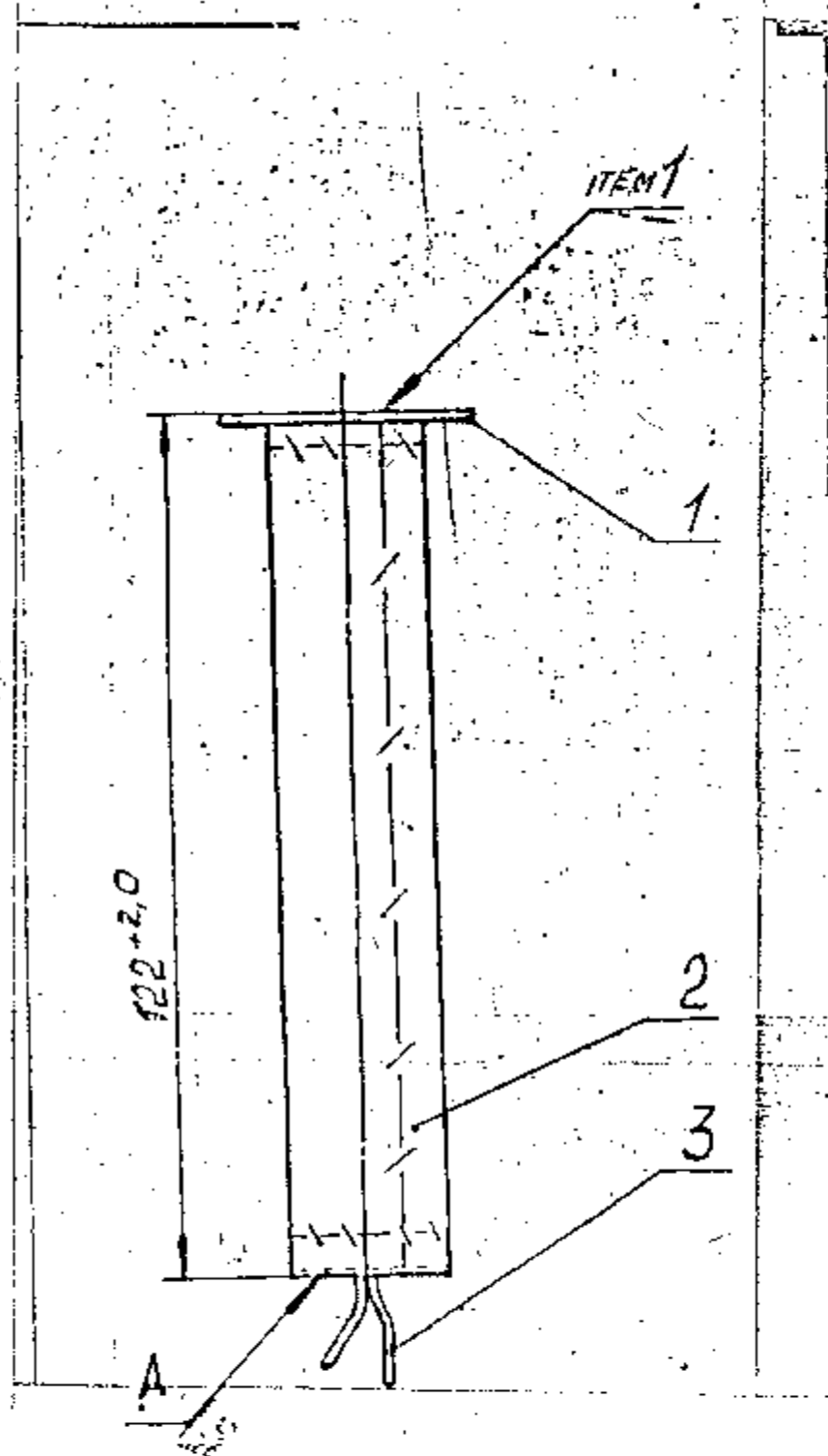
ALL SHARP EDGES AND CORNERS TO BE REMOVED UNLESS OTHERWISE STATED MACHINED CORNERS TO HAVE R OUT SIDE INSIDE EQUIVALENT CHAMFERS ARE PERMISSIBLE.

		DRN	<i>Quar...</i>	MATERIAL:-	USED ON
		CHKD	<i>...</i>	NATURAL SILK No:3	CS 329-07-2
		TEC	<i>...</i>	GOST 1674-77	
		APPD	<i>...</i>	CONTROLLERATE OF QUALITY ASSURANCE (HEAVY VEHICLES)	
		DATE	25-11-89	AVADI	
		SCALE:-	1:1	TITLE	
		DIMENSIONS IN mm		CORD	
		TOLERANCE ON DIMS		D S CAT NUMBER	
		UNLESS OTHERWISE		DRAWING NUMBER	
		STATED IS:2102-69		329-49-1	
		ALL THREADS TO			
		CONFORM TO			
		ISSUE DATE	NATURE OF AMENDMENTS		



DRAWING NUMBER

CB 329-07-2



1. TO BE SEWN WITH KADRON THREAD.
2. IT IS ALLOWED TO SEW WITH SILK THREAD.
3. CORO SHOULD BE PASSED THROUGH FILTER SACK FOLD ON FACE 'A'.
4. SACK SHOULD BE FREELY PUT ON FILTER GAUGE.

KVD No: 63507



SIZE A3

PILOT SAMPLE SHOULD BE APPROVED BY A H S P BEFORE BULK PRODUCTION

EST. WT. TO BE STAMPED OR MARKED WHERE INDICATED THIS # 1 LETTERS)

ALL SHARP EDGES AND CORNERS TO BE REMOVED UNLESS OTHERWISE STATED MACHINED CORNERS TO HAVE R OUT SIDE R INSIDE EQUIVALENT CHAMFERS ARE PERMISSIBLE

DRN	Gharu	MATERIAL:-	USED ON
CHD	...		CB-329-05
TCD	...		CB-329-05-1 (A)
APPD	...		
DATE	30-12-87	CONTROLLERATE OF QUALITY ASSURANCE (HEAVY VEHICLES)	
SCALE:-	1:1	AVADI	
DIMENSIONS IN mm		TITLE	
TOLERANCE ON DIMNS			<b>FILTER COVER ASSY.</b>
UNLESS OTHERWISE STATED IS: 2102-69			
ALL THREADS TO CONFORM TO		D. S. CAT NUMBER	DRAWING NUMBER
			CB 329-07-2
ISSUE	DATE	NATURE OF AMENDMENTS	
A	29.10.97	AUTHY LT. No. 90215/AHSP/ED/AL <sup>de</sup> 12.10.97	





