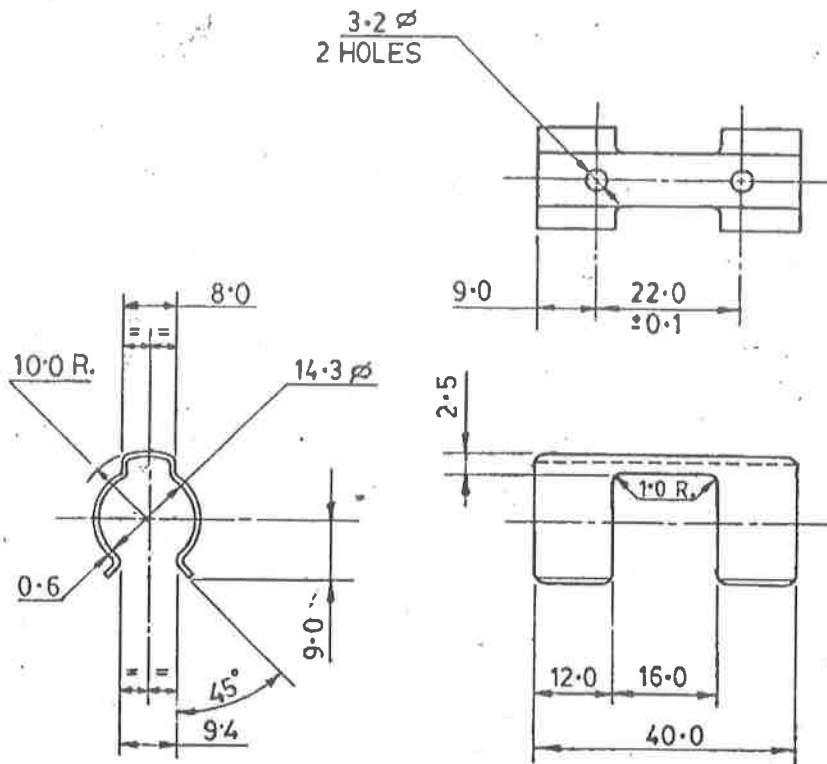


1 2 3 4
 No. 1005-560047 DRAWING CONVENTIONS CONFORM TO JSS:0104
 D.S.CAT. DIMNS. ARE IN mm. GEN. TOL. 'MEDIUM' IS:2102



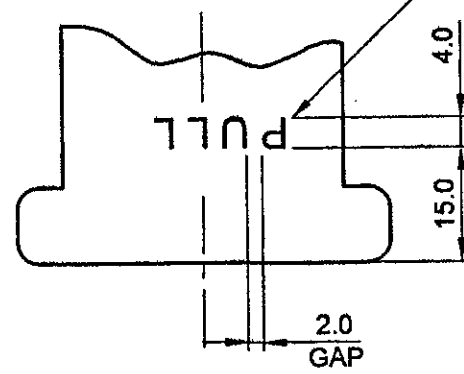
26.08.16	26920SA	MATERIAL AMENDED.	REVISION	1.0	JTO (D)	JTO	DAC
27-11-10	26531-SA	IN ASSY. CQA(SA) SK-971 ADDED.	REVISION	2.0	JTO (D)	JTO	DAC
19-07-10	26525-SA	NSN ADDED.	REVISION	3.0	JTO (D)	JTO	DAC
02-01-03	25638-SA	D.S. CAT. NO. 1005-560047 ADDED & IN ASSY. COLUMN D.S. CAT. NO. 1005-560046 WAS CQA(SA) SK-971	REVISION	4.0	JTO (D)	JTO	DAC
DATE	AUTHY	BRIEF RECORD	ZONE	I/C, D.O.	G.O.		

NSN: B1/1005-72-0000047

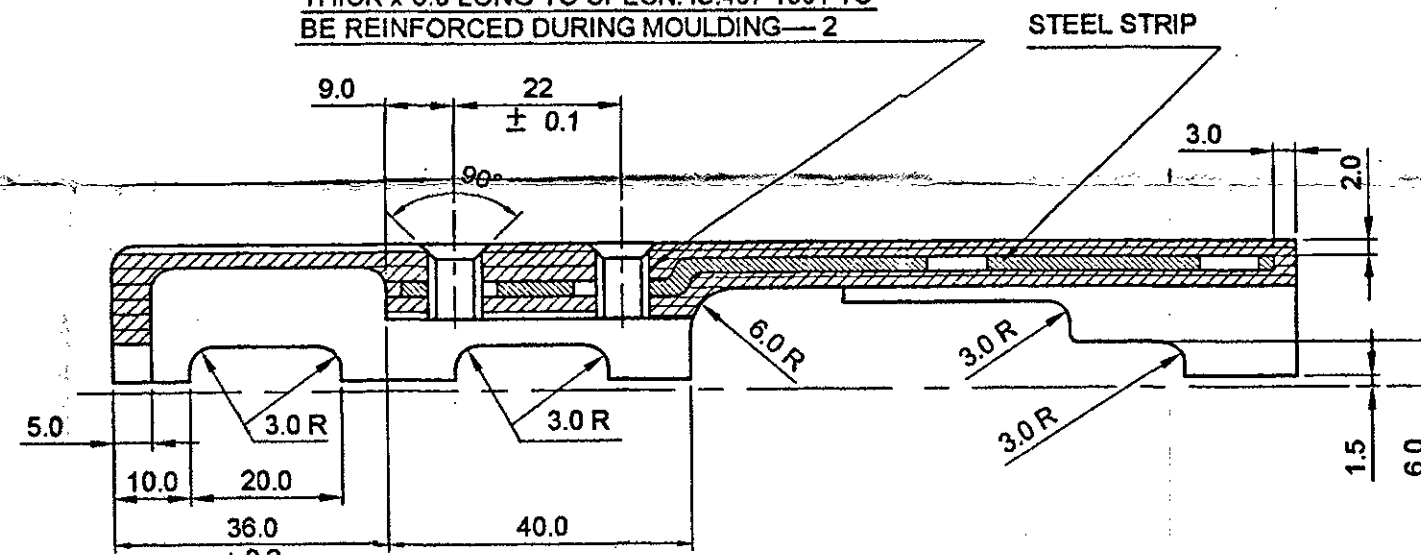
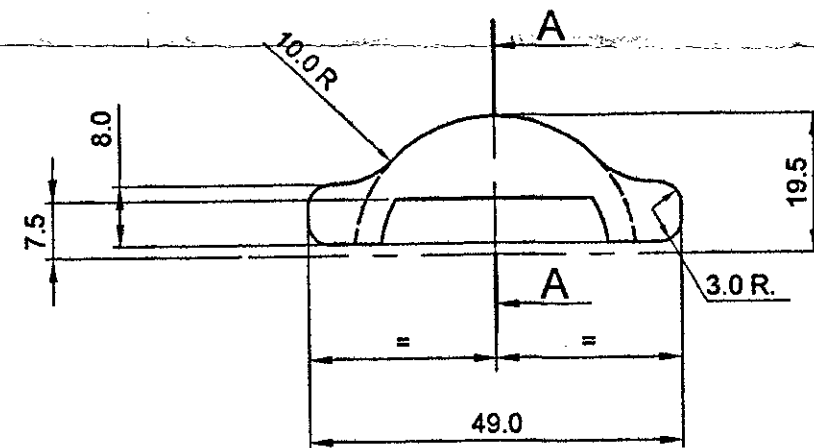
NOTE :-
 REMOVE ALL SHARP EDGES & BURRS

4-9-2001	25114-SA	DRG. PROV. SEALED			
DATE	AUTHY.	BRIEF RECORD	ZONE	I/C, D.O.	G.O.
SEALED :- PROV. D.C. NO. 26114-SA DT. 4.9.2001					SIGN.
DRN. <i>Datto</i>	CHD. M.K.R.C.	TRD.	COMP.	AHSP: CQA(SA) ICHAPUR	
SCALE:- 1:1		EST. MASS.		ASSY. 1005-560046 CQA(SA) SK-971	
DT. 3.9.01	<i>Datto</i> I/C, D.O.	APPROVED	DT. 3.9.01	DAC. CQA(SA)	
MATERIAL :- IS:7226-1974 DESIGNATION C80				DGNR'S ARDE SK.3143/112 Sht 2	
HT./HARDNESS: 400 TO 450 HV.				PART. No.	
PROTECTIVE FINISH :- PHOSPHATED TO SPECN. JSS:0465-01-1988 CLASS II (ACCELERATED), OIL FINISH.				DRG. No. CQA(SA) SK. 454/8/2	
NOMENCLATURE :- CLAMP GUARD HAND (UPPER)				D.S. CAT. No. 1005-560047	

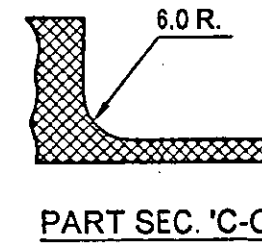
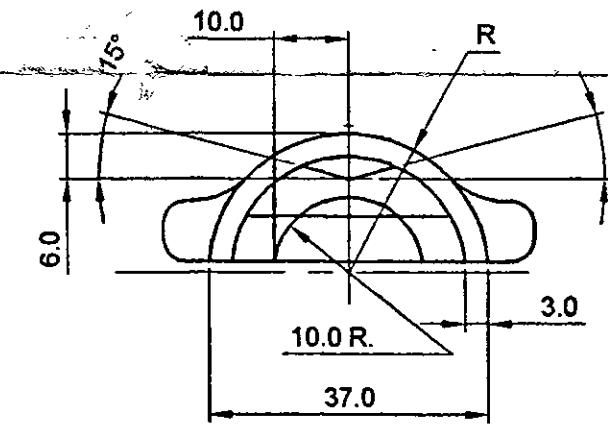
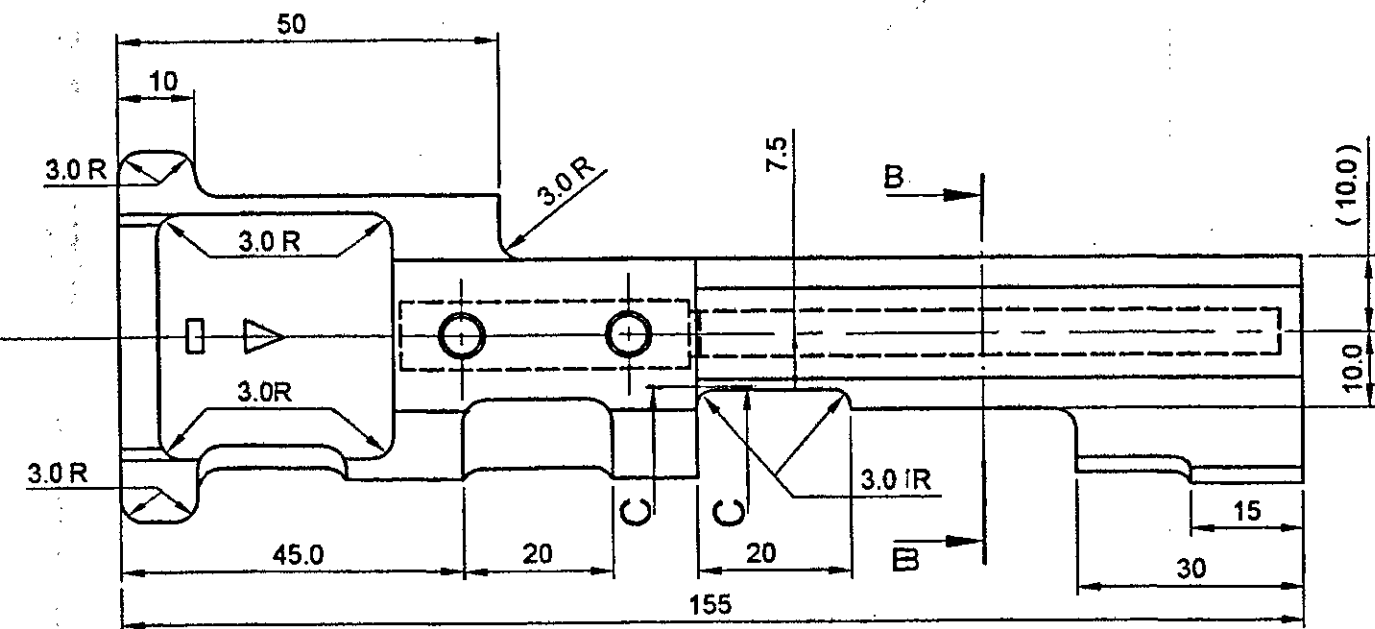
LETTER SIZE 4X3 & 2mm. GAP BETWEEN TWO LETTERS



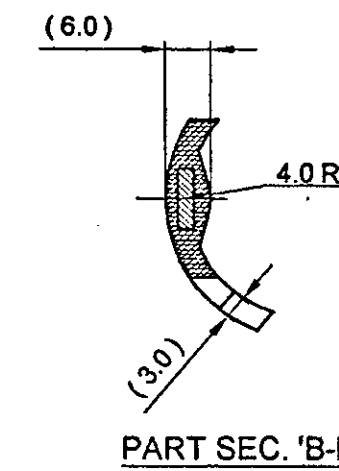
BRASS TUBE GENERAL OUT SIDE Ø5.0 x 1.0 THICK x 8.0 LONG TO SPECN. IS:407-1991 TO BE REINFORCED DURING MOULDING— 2



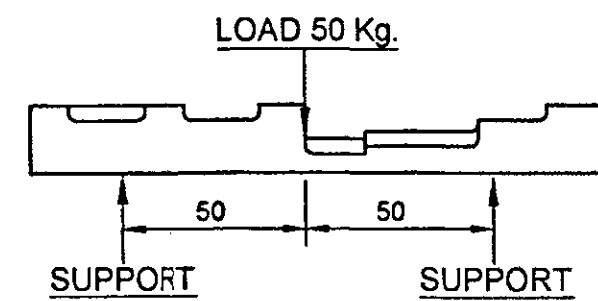
SECTION - 'A-A'



PART SEC. 'C-C'



PART SEC. 'B-B'



SCALE - 1 : 2

NOTE :-

FOR MATL. PHYSICAL PROPERTIES & TESTS REFER SPECN. No. ARDE/SPEC./543 (PROV)

* MANUFACTURER'S SYMBOL SIZE 4.0 mm.

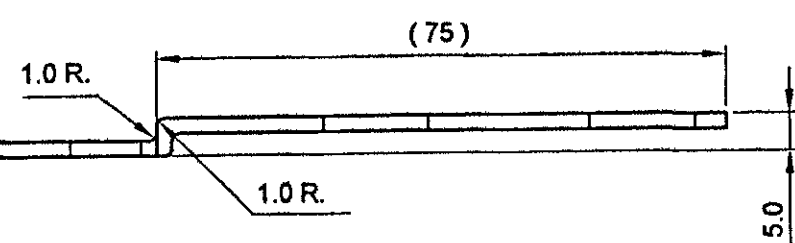
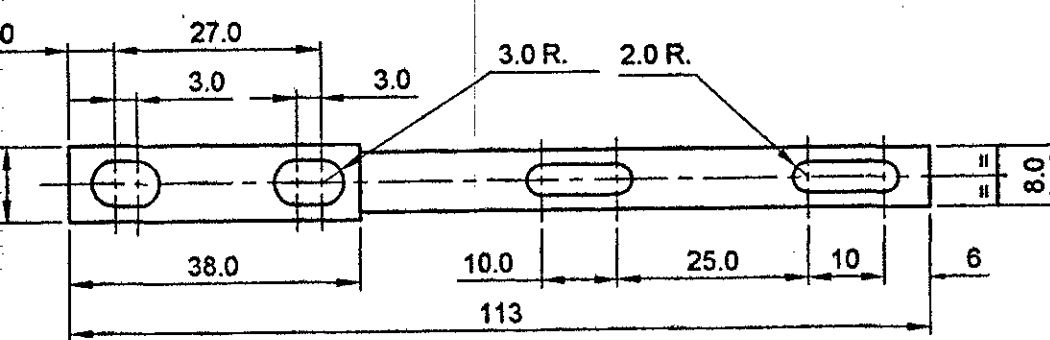
MARKING AT ZONE D/3 ON SAMPLE BY MOULDING.

□ Yr. Of. Mfg.

▽ MANUFACTURER'S CODE

PULL AT ZONE A/2 TO BE MARKED BY MOULDING.

STEEL STRIP



MATL. - STEEL STRIP B.S. 1449 Pt. 1, 1983 GRADE 80 CS SEC - 4.

PROTECTIVE FINISH :- PHOSPHATED TO SPECN. JSS - 0465 - 01 - 1988 CLASS II, OIL FINFSH.

HARDNESS :- 400 TO 450 HV.

CERTIFIED COPY OF THE STORE DRG/GAUGE DRG/Sch/ SPECN/NOTE SH. DATE: 29.07.13. 1000

DRN. <i>AK</i>	CHD. D.D.	TRD.	COMP.	AHSP. CQA(SA) ICHAPUR
SCALE :- 1:1		EST. MASS APPROVED		ASSY. 1005 - 560046
Dt 05-11-09	<i>AK</i> I.C. DO.	Dt 05-11-09	JTO. FOR CQA(SA)	
12-5-12 26635-SA D.S. CAT. NO. ADDED		PHENOLIC RESIN		DGNR'S. REF. 1005 - 560048
03-11-09 26469-SA MATL. & PROTECTIVE FINISH AMENDED, NEW DRG. No. ADDED & DRG. PROV. SEALED.		MATERIAL :- COLOUR : DARK BLUE GREY COLOUR CODE 695 TO SPECIFICATION IS 5 : 2007		PART No.
DATE AUTHY.	BRIEF RECORD	ZONE I/C:DO. G.O.		DRG. No. CQA(SA) SK - 997
SEALED :-	PROV. DC. No. 26496 - SA , DT. 03-11-09	SIGN		D.S.CAT. No. 1005-560832
NOMENCLATURE :- GUARD HAND UPPER (STEEL STRIP)				
PROTECTIVE FINISH :- VAPOUR COATING IN DARK BLUE GREY COLOUR CODE 695 TO SPECN. IS 5 : 2007 OR MRF SHADE No. BLACK - 600 WITH MATT FINISH.				