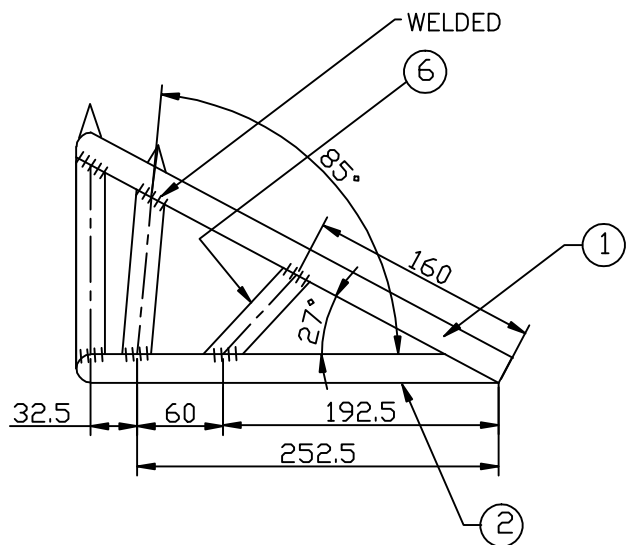
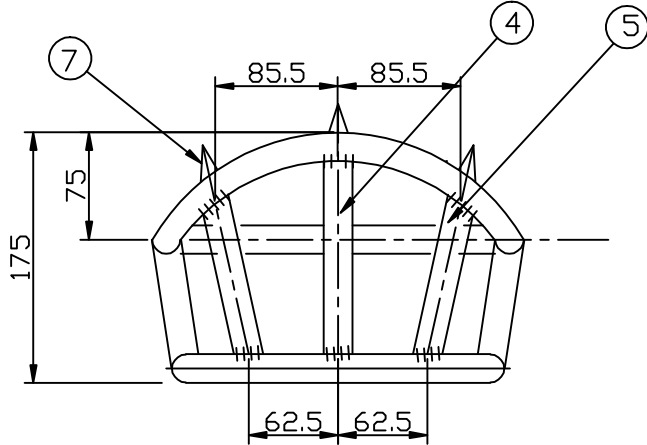
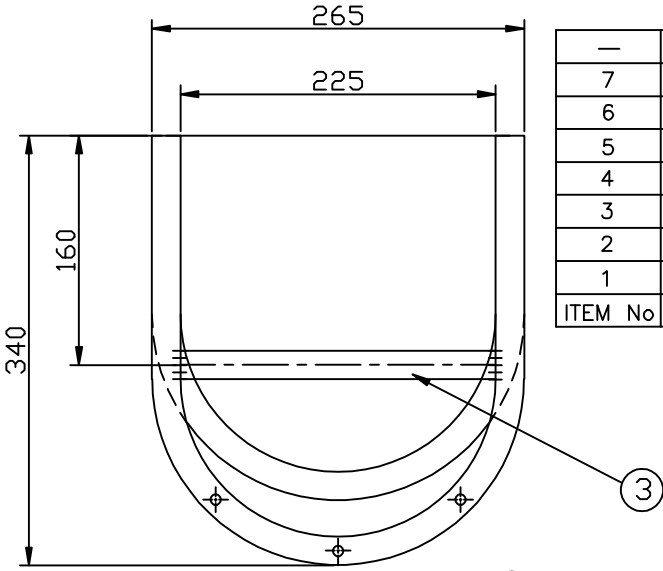


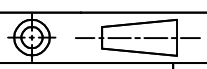
ITEM No	DRG/SPECN. No.	NOMENCLATURE	QTY	SHEET No
7	ADRDE/1427-07	CONC	3	8
6	ADRDE/1427-06	TAPER SIDE PIPE	2	7
5	ADRDE/1427-05	VERTICAL SIDE PIPE	2	6
4	ADRDE/1427-04	VERTICAL PIPE	1	5
3	ADRDE/1427-03	HORIZONTAL PIPE	1	4
2	ADRDE/1427-02	SMALL FRAME	1	3
1	ADRDE/1427-01	LARGE FRAME	1	2

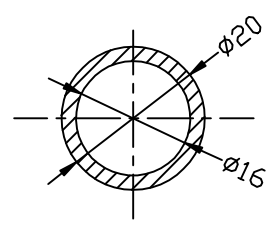
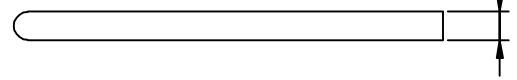
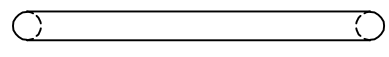
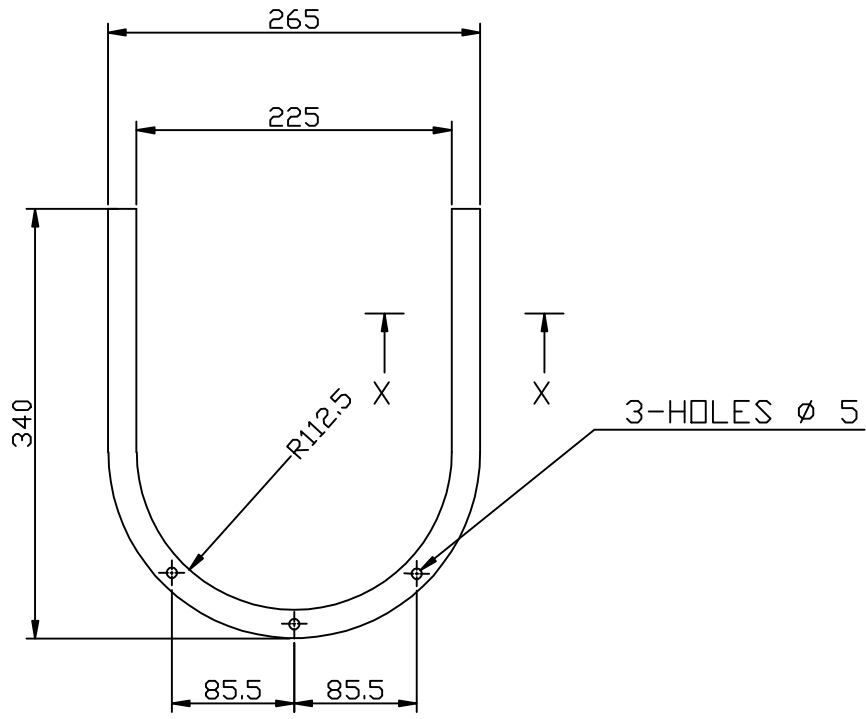
ITEM LIST



WELDING :- ALL JOINTS SHOULD BE WELDED BY ELECTRODES CONFORMING TO ADVANI OERLIKON SUPERCITO AWS A/SFA 5.1:E7018 OR IS:814:EB-5426 H3J X OR ITS EQUIVALENT. WELDED JOINTS SHOULD BE TESTED BY DPT(IS:3658) BEFORE FINISH.

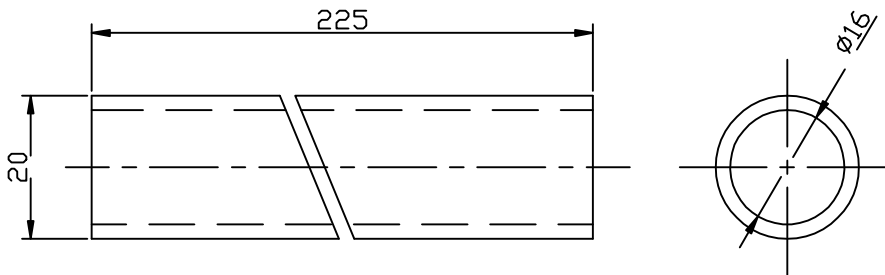
Ref.No	DATE	ZONE	AUTHORITY	BRIEF RECORD			<input type="checkbox"/> I/C HEAD (D&S)	<input type="checkbox"/> HEAD (Q.A.)
SCALE:- NTS	QTY:-1 No.	A D R D E AGRA		DRN.	SK SHARMA			
DIMENSIONS IN mm		GROUP:- HDS		CHD.	JC DUTTA		PROJ.DFFR./GP.DFFR.	
TOL:- IS:2102 (Pt-1) 1993 MEDIUM EXCEPT WHERE OTHERWISE SPECIFIED		ASSEMBLY CHOKO WHEEL (H D SYSTEM FOR AN 32 A/C)		APPROVED		PROJ. DIR.		
MATERIAL:- STEEL SECTION 15x15x1.4						GROUP DIR.		
FINISH:- AS PER SHEET No.6						DRG. No. ADRDE/1427		
HEAT TREATMENT:-								



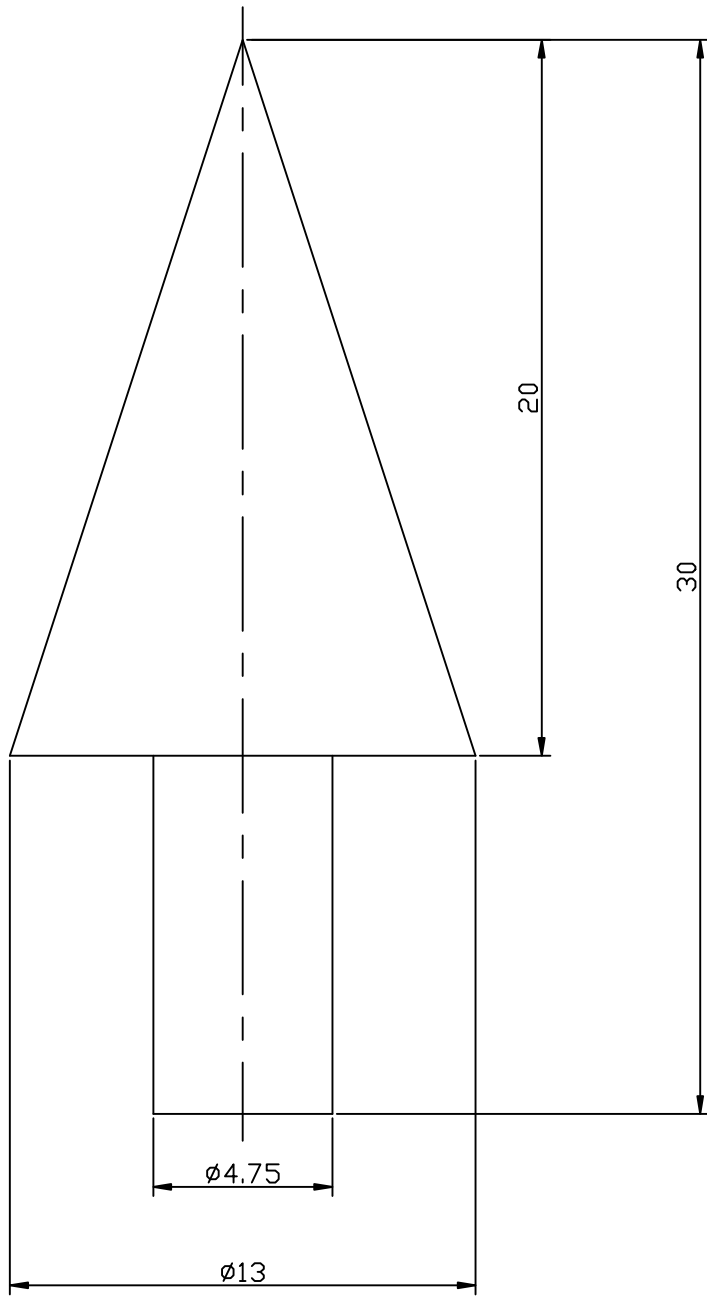


SECTION-XX

Ref.No	DATE	ZONE	AUTHORITY	BRIEF RECORD			<input type="checkbox"/> I/C HEAD (D&S)	<input type="checkbox"/> HEAD (Q.A.)
SCALE:- 1:5	QTY:- 1 No.		A D R D E AGRA	DRN.	SK SHARMA	PROJ.OFFR./GP.OFFR.		
DIMENSIONS IN mm			GROUP:- HDS	CHD.	JC DUTTA			
TOL:- IS:2102(Pt-1)1993 MEDIUM EXCEPT WHERE OTHERWISE SPECIFIED			<p style="text-align: center;">HORIZONTAL FRAME CHOKER WHEEL</p> <p style="text-align: center;">(H D SYSTEM FOR AN 32 A/C)</p>			PROJ. DIR.		
MATERIAL:- MS PIPE						APPROVED		
FINISH:- NATURAL						GROUP DIR.		
HEAT TREATMENT:-						DRG. No. ADRDE/1427-01		



Ref.No	DATE	ZONE	AUTHORITY	BRIEF RECORD			<input type="checkbox"/> I/C HEAD (D&S) (Q.A.)
SCALE:- 1:1	QTY:-1 No.		ADRDE AGRA	DRN.	SK SHARMA	PROJ.OFFR./GP.OFFR.	
DIMENSIONS IN mm			GROUP:- HDS	CHD.	JC DUTTA		
TOL:- IS:2102(Pt-1)1993 MEDIUM EXCEPT WHERE OTHERWISE SPECIFIED			HORIZONTAL PIPE CHOKER WHEEL (H D SYSTEM FOR AN 32 A/C)			PROJ. DIR.	
MATERIAL:- MS PIPE						APPROVED	
FINISH:- NATURAL						GROUP DIR.	
HEAT TREATMENT:-						DRG. No. ADRDE/1427-03	



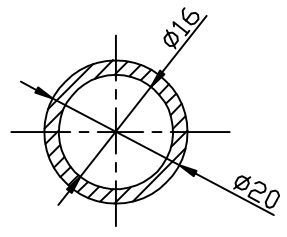
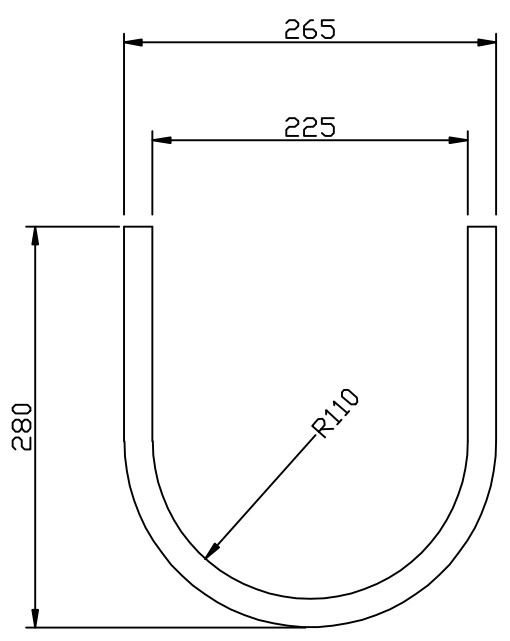
Ref.No	DATE	ZONE	AUTHORITY	BRIEF RECORD			<input type="checkbox"/> I/C HEAD (D&S) (Q.A.)
SCALE:- 5:1	QTY:-3 Nos.		A D R D E AGRA	DRN.	SK SHARMA	PROJ.OFFR./GP.OFFR.	
DIMENSIONS IN mm			GROUP:- HDS	CHD.	JC DUTTA	PROJ. DIR.	
TOL:- IS:2102(Pt-1)1993 MEDIUM EXCEPT WHERE OTHERWISE SPECIFIED			CONE CHOKE WHEEL (H D SYSTEM FOR AN 32 A/C)			APPROVED	
MATERIAL:- MS						GROUP DIR.	
FINISH:- NATURAL						DRG. No. ADRDE/1427-04	
HEAT TREATMENT:-							

1

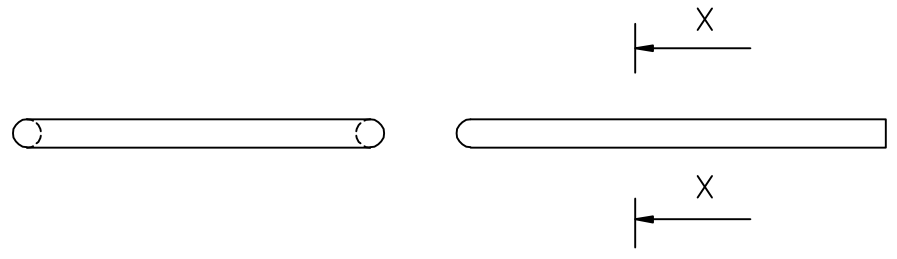
2

3

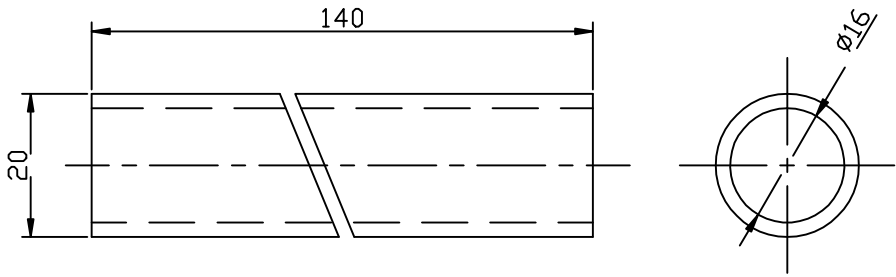
4



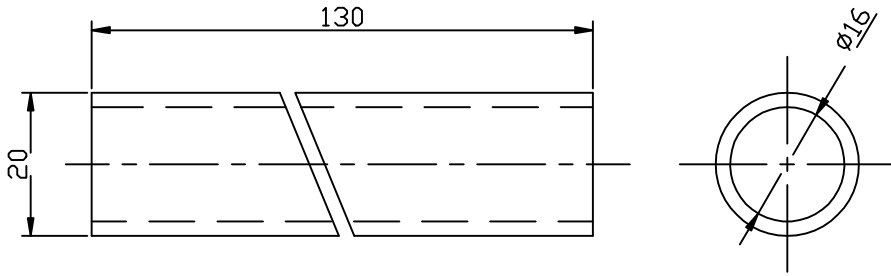
SECTION XX
SCALE:-1:1



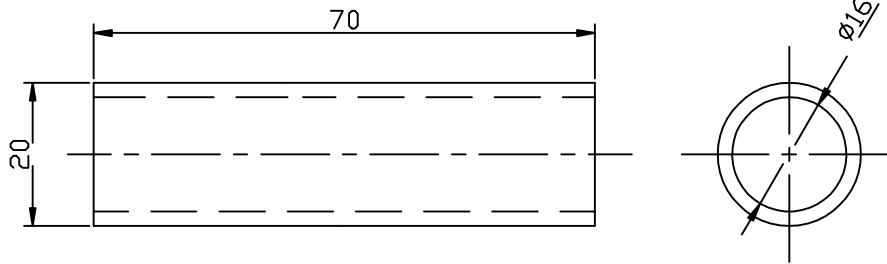
Ref.No	DATE	ZONE	AUTHORITY	BRIEF RECORD			<input type="checkbox"/> I/C HEAD (D&S)	<input type="checkbox"/> HEAD (Q.A.)
SCALE:- 1:5	QTY:- 2 Nos.		A D R D E AGRA	DRN.	SK SHARMA			
DIMENSIONS IN mm			GROUP:- HDS	CHD.	JC DUTTA	PROJ.OFFR./GP.OFFR.		
TOL:- IS:2102(Pt-1)1993 MEDIUM EXCEPT WHERE OTHERWISE SPECIFIED			INCLINED FRAME CHOKE WHEEL (H D SYSTEM FOR AN 32 A/C)			PROJ. DIR.		
MATERIAL:- MS PIPE						APPROVED		
FINISH:- NATURAL						GROUP DIR.		
HEAT TREATMENT:- _____						DRG. No. ADRDE/1427-02		

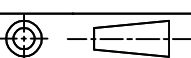


Ref.No	DATE	ZONE	AUTHORITY	BRIEF RECORD			<input type="checkbox"/> I/C HEAD (D&S) (Q.A.)
SCALE:- 1:1	QTY:-1 No.		ADRDE AGRA	DRN.	SK SHARMA	PROJ.OFFR./GP.OFFR.	
DIMENSIONS IN mm			GROUP:- HDS	CHD.	JC DUTTA		
TOL:- IS:2102(Pt-1)1993 MEDIUM EXCEPT WHERE OTHERWISE SPECIFIED			VERTICAL PIPE CHOKE WHEEL (H D SYSTEM FOR AN 32 A/C)			PROJ. DIR.	
MATERIAL:- MS PIPE						APPROVED	
FINISH:- NATURAL						GROUP DIR.	
HEAT TREATMENT:-						DRG. No. ADRDE/1427-04	



Ref.No	DATE	ZONE	AUTHORITY	BRIEF RECORD			<input type="checkbox"/> I/C HEAD (D&S) (Q.A.)
SCALE:- 1:1	QTY:-2 Nos.		ADRDE AGRA	DRN.	SK SHARMA	PROJ.OFFR./GP.OFFR.	
DIMENSIONS IN mm			GROUP:- HDS	CHD.	JC DUTTA		
TOL:- IS:2102(Pt-1)1993 MEDIUM EXCEPT WHERE OTHERWISE SPECIFIED			VERTICAL SIDE PIPE CHOKER WHEEL (H D SYSTEM FOR AN 32 A/C)			PROJ. DIR.	
MATERIAL:- MS PIPE						APPROVED	
FINISH:- NATURAL						GROUP DIR.	
HEAT TREATMENT:-						DRG. No. ADRDE/1427-05	



Ref.No		DATE	ZONE	AUTHORITY	BRIEF RECORD			<input type="checkbox"/> I/C HEAD (D&S) (Q.A.)
SCALE:- 1:1		QTY:- 2 Nos.		ADRDE AGRA	DRN.	SK SHARMA		
DIMENSIONS IN mm				GROUP:- HDS	CHD.	JC DUTTA		
TOL:- IS:2102(Pt-1)1993 MEDIUM EXCEPT WHERE OTHERWISE SPECIFIED				<p style="text-align: center;">TAPER SIDE PIPE CHOKER WHEEL (H D SYSTEM FOR AN 32 A/C)</p>			PROJ.DFFR./GP.DFFR.	
MATERIAL:- MS PIPE							PROJ. DIR.	
FINISH:- NATURAL							APPROVED	
HEAT TREATMENT:-							GROUP DIR.	
							DRG. No. ADRDE/1427-06	