

SEC. AT 'A-A'

**CONTROLLED COPY**

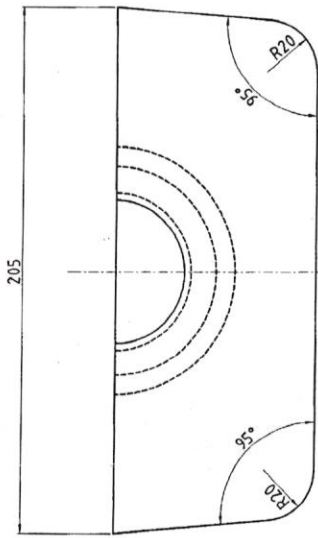
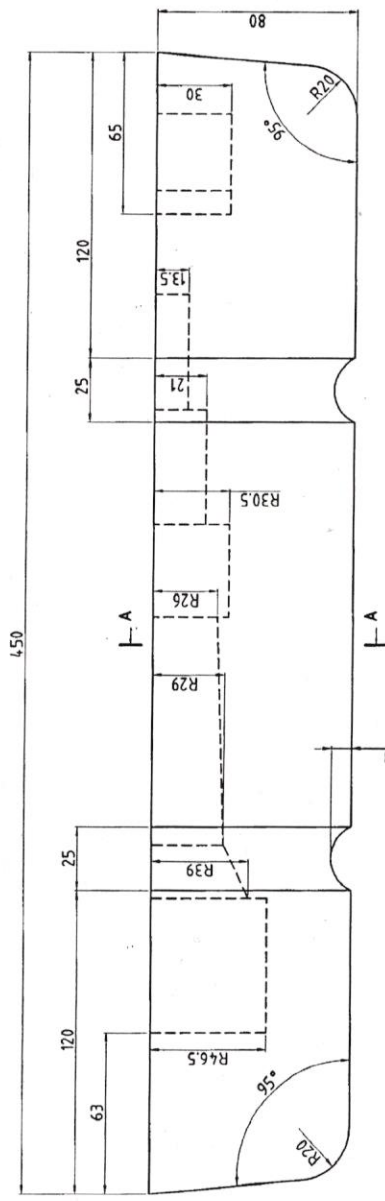
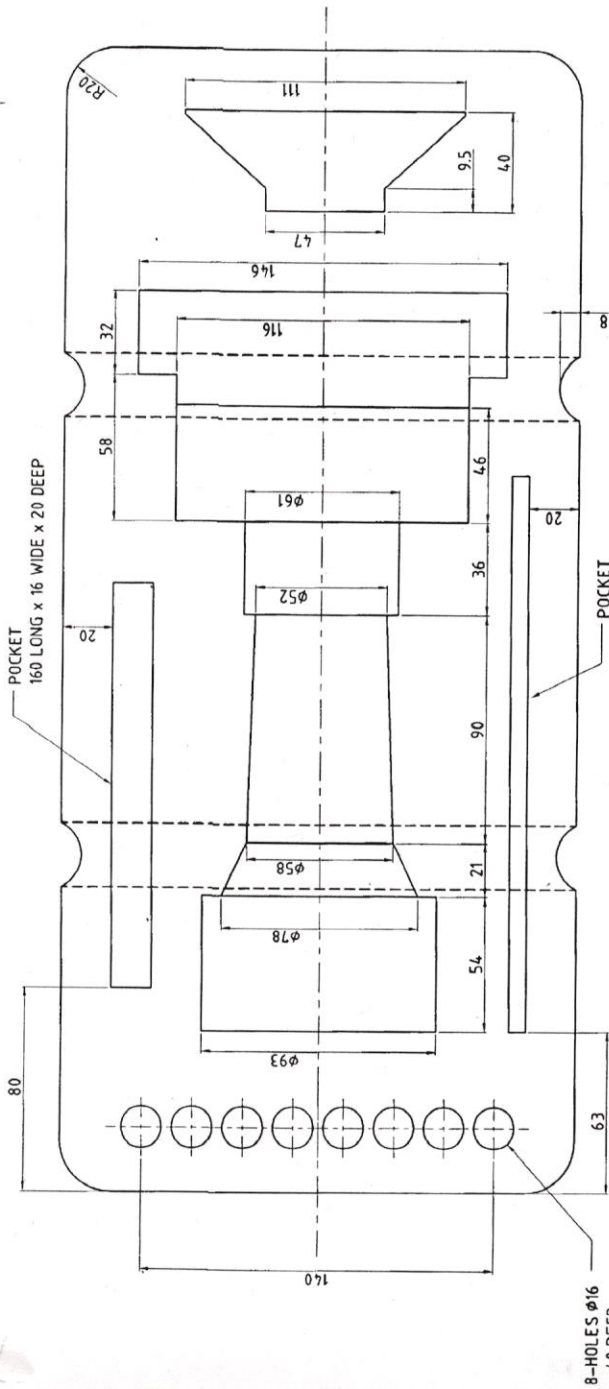
Copy No. ....

Date of Issue 19.11.18

MATL. :- EXPANDED POLYTHELENE FOAM  
(DENSITY 0.09+0.01 g/cm<sup>3</sup>, BLACK/GREY)  
FINISH :- CLEAN.

ALL DIMENSIONS ARE IN MM.

ORDNANCE FACTORY DEHRADUN	DR. :- RK SHARMA	DI. :- 18.11.2016	SCALE :- N.T.S.
	TR. :-	MATL. AS ABOVE	TREAT AS ABOVE
	CH. :-	SHTS. :- 1	SHT. NO. :- 1
APPROVED. (AJAY SINGH) HOS/DO.		DRAWING No. :- CWC - 247/1	
CASE CARRYING PASSIVE NIGHT VISION BINOCULAR (LIGHT WEIGHT) M2 PAD UPPER			



SEC. AT 'A-A'

**CONTROLLED COPY**

Copy No. ....  
Date of Issue ...

MATL. :- EXPANDED POLYTHELENE FOAM  
(DENSITY 0.09+0.01 g/cm<sup>3</sup>, BLACK/GREY)  
FINISH :- CLEAN.

ALL DIMENSIONS ARE IN MM.

ORDNANCE FACTORY DEHRADUN	DR. :- R.K. SHARMA	DI. :- 18.11.2016	SCALE :- N.T.S.
	TR. :-	MATL. AS ABOVE	TREAT AS ABOVE
	CH. :-	SHTS. :- 1	SHT. NO. :- 1
	(AJA) (R) (GH) (T) (K) (T) (R) (R) HOS/DO.	DRAWING No. :- CWC-247/2	
	APPROVED.	AMENDMENTS.	
		OFD/DO/002.	
CASE CARRYING PASSIVE NIGHT VISION BINOCULAR (LIGHT WEIGHT) M2 PAD LOWER			

ORDNANCE FACTORY, DEHRADUN

CAT/PT. NO.		NOMENCLATURE		SCHEDULE OF PARTS COMPRISING :-		DRAWING NO.	
/STORE DRG.NO.		CASE CARRYING PASSIVE NIGHT VISION		BINOCULAR (L/W) M2		CWC-247	
		BOX		1	IRDE-2003/1		
		RIVET SNAP HD. STEEL $\phi 2.5 \times 8$ , IS:2998		16			
		RIVET SNAP HD. STEEL $\phi 2.0 \times 8$ , IS:2998		24			
		PUNCHED WASHER M2.5, IS:2016 BRASS		16			
		PUNCHED WASHER M2.2, IS:2016 BRASS		24			
		LID		1	IRDE-2003/2		
		RIVET SNAP HD. STEEL $\phi 2.0 \times 7$ , IS:2998		42			
		RIVET SNAP HD. STEEL $\phi 2.5 \times 14$ , IS:2998		8			
		PUNCHED WASHER M2.2, IS:2016 BRASS		42			
		PUNCHED WASHER M2.5, IS:2016 BRASS		8			
		PAD UPPER		1	CWC-247/1		
		PAD LOWER		1	CWC-247/2		
		NAME PLATE		1	CWC-247/3		
		NAME PLATE		1	CWC-247/4		
		HANDLE		2	IRDE-1613/5		
		PLATE		2	IRDE-1613/6		
		CLIP		10	IRDE-1613/8		
		FASTENER SET TURN LOCK		2	IRDE-328		
		STRAP WEB COTTON VOD OG. COLOUR		1			
		38 WIDE $\times$ 2.5 THICK $\times$ 225, LONG.					
		STRAP WEB COTTON VOD OG. COLOUR		2			
		38 WIDE $\times$ 2.5 THICK $\times$ 1500 LONG.					
		BUCKLE, BRASS, QUICK-RELEASE, 38 mm.		2			
		TIP, BRASS 38 mm.		2			
		EYE LET, BRASS		4			
		'O' RING OF SYNTHETIC RUBBER NITRILE		1			
		VARIETY IRHD 51 TO 60 $\phi 5.1 \times 1380$ LG.					
DR - R.K.SHARMA		DT. - 18/11/2016		SCALE		SHT. No.-1	
TR-		CH-		SHEETS.-2		DRAWING NO.	
APPROVED		(T.KHATTERJI)		CWC-247		AMENDMENTS	
HOS/D.O. (AJAY SINGH)		Jt.GM/P&P		OFD/DO/002			

DATE OF ISSUE / S.T. K.

5