



OFT

**ASSEMBLY PARTS LIST**

Assembly Parts List For: 064706A-00

Rev: -

Status: Released

Description: BODY EXTERNAL WELDED

FN	CMD	PART NUM	ECO	DESCRIPTION	MB	QTY	U/M	REF. DES./REMARKS	MFG. PN / CUSTOMER	LA	LI
1	MP	064707A-00		BODY EXTERNAL	M	1	Each				
2	MP	064708A-00		POINTER	M	1	Each				

2

DWG NO 064707A-00

SH 1

1

SHEET REV RECORD

ALL SHEETS ARE THE SAME REVISION

REVISION RECORD

REV	ECO	DESCRIPTION	DATE	APVD
01		Freeze	02-Oct-12	
02		Freeze	28-Nov-13	
03		Restricted	11-Jun-14	L. Goldshtein
--		Identical To Previous Released	09-Apr-18	L. Goldshtein

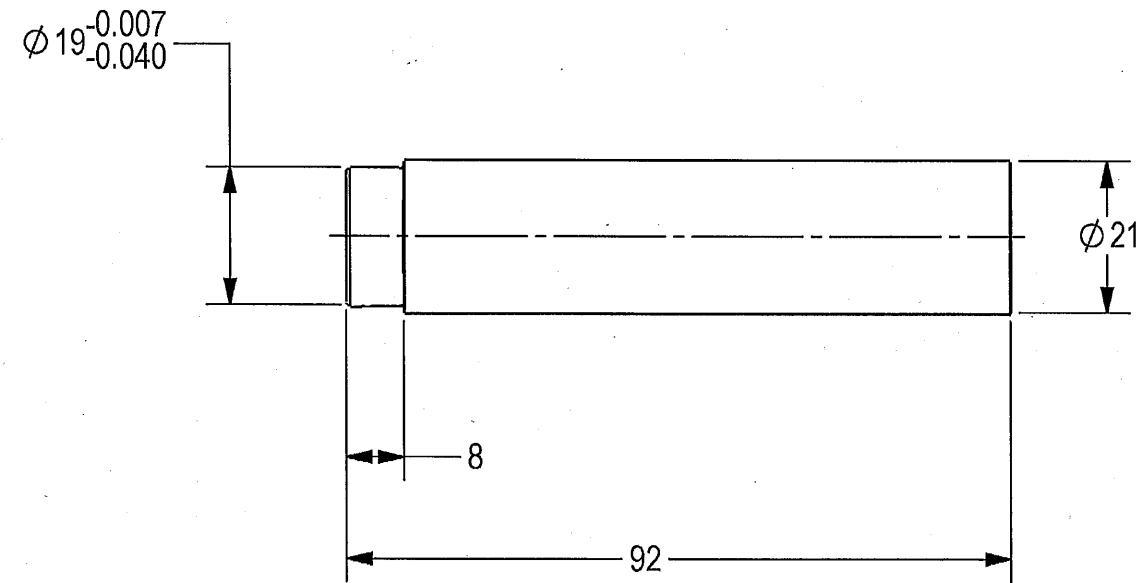
THIS DOCUMENT AND THE INFORMATION CONTAINED IN IT ARE PROPRIETARY AND CONFIDENTIAL TO OFT. NO PERSON OR ENTITY IS ALLOWED TO COPY, REPRINT, REPRODUCE OR PUBLISH ANY PART OF THIS DOCUMENT, NOR DISCLOSE ITS CONTENTS TO OTHERS, NOR MAKE ANY USE OF IT, NOR ALLOW OR ASSIST OTHERS TO MAKE ANY USE OF IT UNLESS BY THE PRIOR WRITTEN EXPRESS AUTHORIZATION OF OFT AND THEN ONLY TO THE EXTENT AUTHORIZED.  
COPYRIGHT-OFT.

NOTES :

- INTERPRET THIS DRAWING IAW ASME Y14.100M.
- MATERIAL: ALLOY STEEL BAR RND SAE 4130 NORMALIZED PER SAE-AMS-S-6758 OR SAE 4340 NORMALIZED PER SAE-AMS-S-5000.
- UNLESS OTHERWISE SPECIFIED, UNDEFINED MACHINED FILLET RADII SHALL BE 0.2...0.3.
- DEBURR AND REMOVE SHARP EDGES, APPROX. 0.2X45 Deg.
- QUALITY ASSURANCE PROVISIONS:
  - QUALITY ASSURANCE PROVISIONS FOR THIS ITEM PER RDMQD00012P.
- PARENTHETICAL FIGURES ARE FOR REFERENCE ONLY.
- PACKAGING AND PACKING: THE FINISHED PART SHALL BE PRESERVED AND PACKAGED IN ACCORDANCE WITH MANUFACTURER'S BEST COMMERCIAL PRACTICE.
- IDENTIFY PER MIL-STD-130 PARA 4.1.B, BY LABELING ITS CONTAINER WITH THE PART NUMBER. CHARACTERS MINIMUM TEXT HEIGHT 1.25 MM.

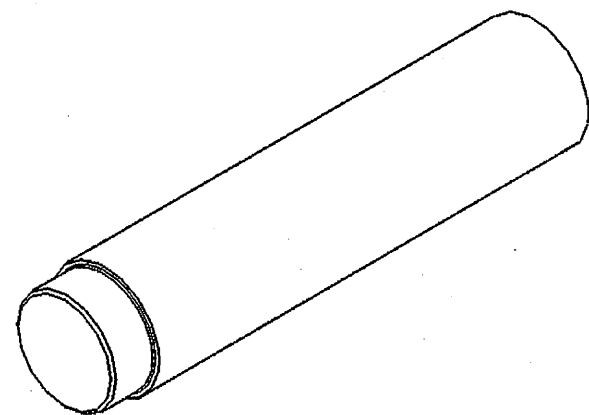
B

B



A

A



(WEIGHT: 0.24 Kg APPROX.)

2

SEE ATTACHED MEDIA

UNLESS OTHERWISE SPECIFIED		SIGNATURE		DATE		ORDNANCE FACTORY TIRUCHIRAPPALLI	
DIMENSIONS ARE IN MM PER ASME Y14.5M - 1994		DRAWN		2/1/21		TITLE	
TOLERANCES		CHECKED		2/1/21		FOR: BODY EXTERNAL WELDED	
LINEAR	ANGULAR	HOS/DDO				OF: 12.7MM SRCG	
± 0.2	± 0.5°	OFFICER/PRODN				SIZE	
1st ANGLE PROJECTION		OFFICER/OC				CAGE CODE	
SURFACE TEXTURE IN Micro Meter		OFFICER/DDO		4/1/21		DWG NO	
PROJECT OFFICER		Dinesh		4/1/21		SCALE 1:1	
PLM Control						AUTOMATED DRAWING (SW)	
						SHEET 1 OF 1	



BODY EXTERNAL

SIZE B

CAGE CODE 2291A

DWG NO 064707A-00

1

2

DWG NO 064708A-00

SH 1

1

SHEET REV RECORD

ALL SHEETS ARE THE SAME REVISION

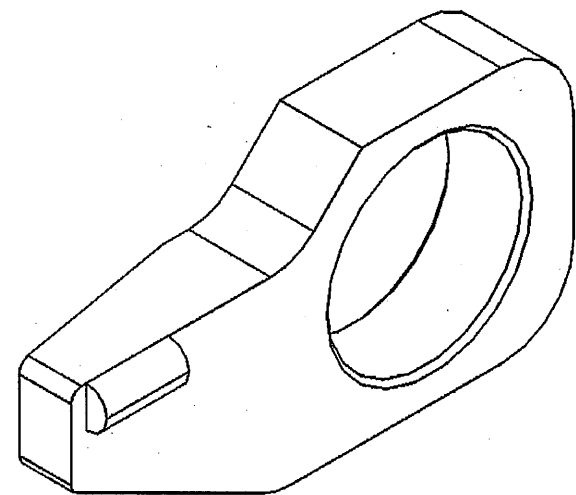
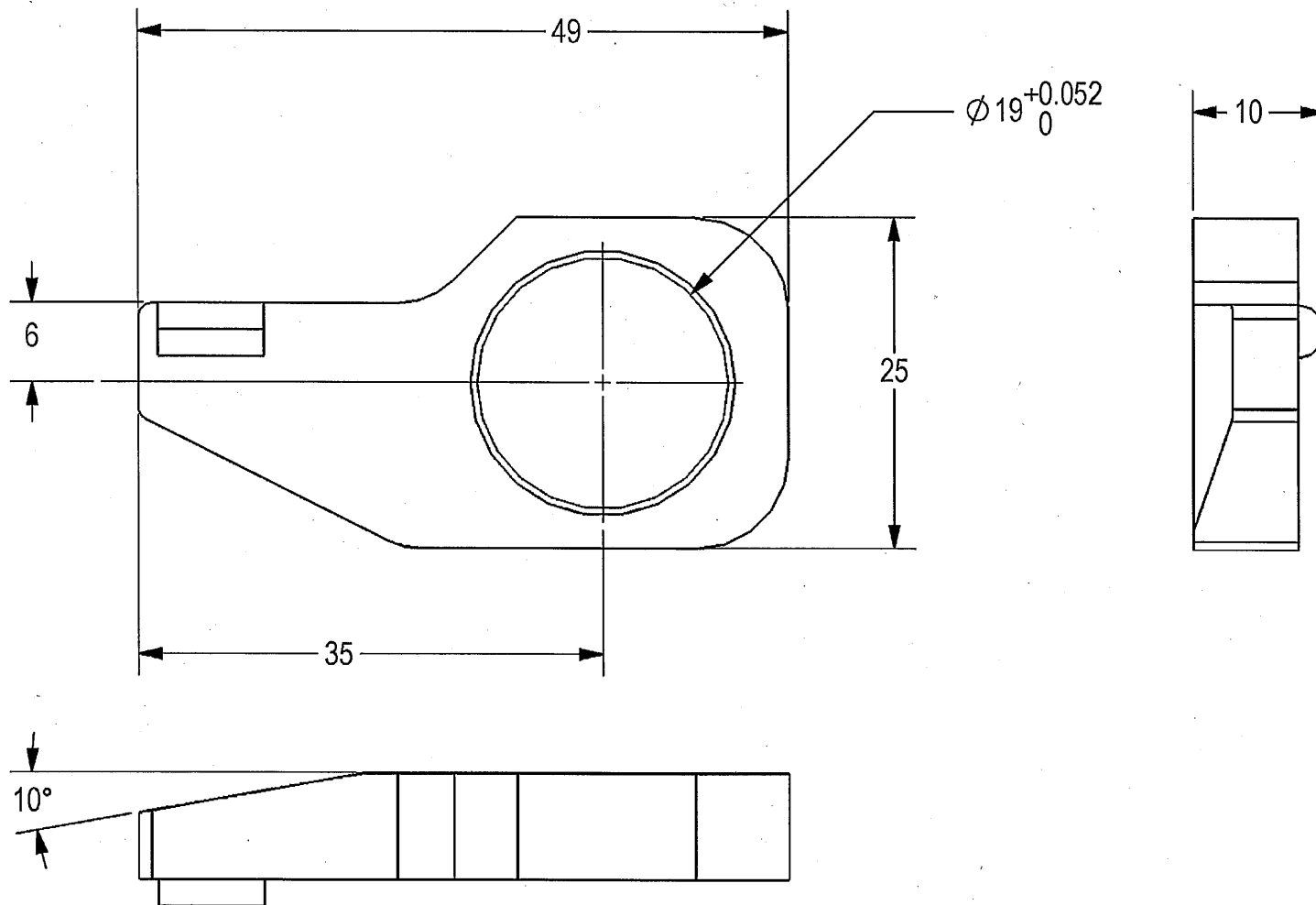
REVISION RECORD

REV	ECO	DESCRIPTION	DATE	APVD
02		4 Scrap Freeze	23-Nov-12	
03		Freeze	24-Jan-13	
04		Freeze	28-Nov-13	
05		Restricted	28-May-14	L. Goldstein
--		Identical To Previous Released	09-Apr-18	L. Goldstein

THIS DOCUMENT AND THE INFORMATION CONTAINED IN IT ARE PROPRIETARY AND CONFIDENTIAL TO OFT. NO PERSON OR ENTITY IS ALLOWED TO COPY, REPRINT, REPRODUCE OR PUBLISH ANY PART OF THIS DOCUMENT, NOR DISCLOSE ITS CONTENTS TO OTHERS, NOR MAKE ANY USE OF IT, NOR ALLOW OR ASSIST OTHERS TO MAKE ANY USE OF IT UNLESS BY THE PRIOR WRITTEN EXPRESS AUTHORIZATION OF OFT AND THEN ONLY TO THE EXTENT AUTHORIZED. COPYRIGHT-OFT.

NOTES :

- INTERPRET THIS DRAWING IAW ASME Y14.100M.
- MATERIAL: ALLOY STEEL PLATE SAE 4130 NORMALIZED PER SAE-AMS-6345 OR SAE 4340 NORMALIZED PER AMS-6359.
- UNLESS OTHERWISE SPECIFIED, UNDEFINED MACHINED FILLET RADII SHALL BE 0.2...0.3.
- DEBURR AND REMOVE SHARP EDGES, APPROX. 0.2X45 Deg.
- QUALITY ASSURANCE PROVISIONS:
  - QUALITY ASSURANCE PROVISIONS FOR THIS ITEM PER RDMQD00012P.
- PARENTHETICAL FIGURES ARE FOR REFERENCE ONLY.
- PACKAGING AND PACKING: THE FINISHED PART SHALL BE PRESERVED AND PACKAGED IN ACCORDANCE WITH MANUFACTURER'S BEST COMMERCIAL PRACTICE.
- IDENTIFY PER MIL-STD-130 PARA 4.1.B, BY LABELING ITS CONTAINER WITH THE PART NUMBER. CHARACTERS MINIMUM TEXT HEIGHT 1.25 MM.



(WEIGHT: 0.04 Kg APPROX.)

SEE ATTACHED MEDIA

UNLESS OTHERWISE SPECIFIED		SIGNATURE	DATE	ORDNANCE FACTORY TIRUCHIRAPPALLI	
DIMENSIONS ARE IN MM PER ASME Y14.5M - 1994		DRAWN	2/1/21	FOR: BODY EXTERNAL WELDED	
TOLERANCES		CHECKED		OF: 12.7MM SRCG	
LINEAR	ANGULAR	HOS/DDO	2/1/21	TITLE <b>POINTER</b>	
± 0.2	± 0.5°	OFFICER/PRODN		SIZE	CAGE CODE
1st. ANGLE PROJECTION		OFFICER/QC		<b>B</b>	<b>2291A</b>
SURFACE TEXTURE IN Micro Meter		OFFICER/DDO	4/1/21	DWG NO	<b>064708A-00</b>
PROJECT OFFICER		SCALE 2:1		AUTOMATED DRAWING (SW)	SHEET 1 OF 1

3.2/

PLM Control

1

2