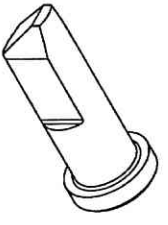


THIS DOCUMENT AND THE INFORMATION CONTAINED IN IT ARE PROPRIETARY AND CONFIDENTIAL TO ODT. NO PERSON OR ENTITY IS ALLOWED TO COPY, REPRODUCE, REPRODUCE OR PUBLISH ANY PART OF THIS DOCUMENT, NOR DISCLOSE ITS CONTENTS TO OTHERS, NOR MAKE ANY USE OF IT, NOR ALLOW OR ASSIST OTHERS TO MAKE ANY USE OF IT UNLESS BY THE PRIOR WRITTEN EXPRESS AUTHORIZATION OF ODT AND THEN ONLY TO THE EXTENT AUTHORIZED. COPYRIGHT-ODT.

NOTES:

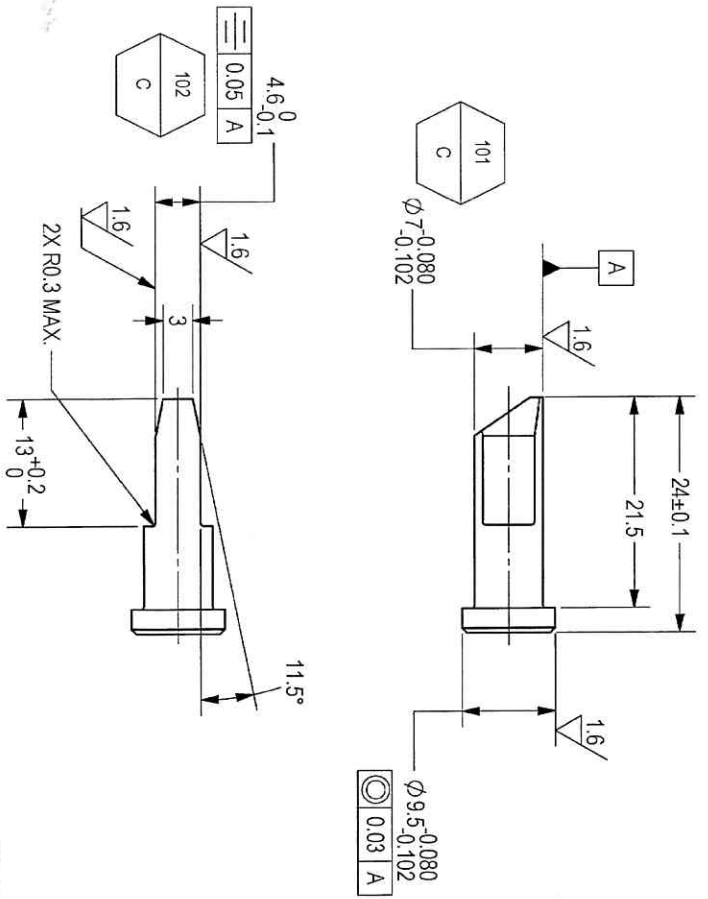
- INTERPRET THIS DRAWING IN ACCORDANCE WITH ASME Y14.100M.
- MATERIAL: ALLOY STEEL BAR RND SAE 4130 NORMALIZED PER SAE-AMS-S-6758 OR SAE 4340 NORMALIZED PER SAE-AMS-S-5000.
- UNLESS OTHERWISE SPECIFIED, UNDEFINED MACHINED FILLET RADI SHALL BE 0.2...0.3
- DEBURR AND REMOVE SHARP EDGES, APPROX. 0.2X45 Deg. BEFORE COATING.
- ALL DIMENSIONS ARE AFTER HEAT TREATMENT AND BEFORE COATING.
- GENERAL TOLERANCES ACCORDING TO ISO 2768-m.
- HEAT TREATMENT TO 36+3 HRC PER AMS 2759/1.
- COATING: PHOSPHATE MANGANESE COATING PER MIL-DTL-16232 TYPE M CLASS 2; 5-10 MICRON THICK WITH LUBRICANT OIL PER MIL-PRF-16173 GRADE 3 OR MIL-PRF-3150.
- BAKE PART AFTER PLATING WITHIN 3 HOURS PER MIL-DTL-16232 TABLE I for 8 hours at 98° to 107°.
- QUALITY ASSURANCE PROVISIONS FOR THIS ITEM PER RDMQD00012P.
- MAJOR CHARACTERISTICS NRS 101 TO 102.
- PARENTHEICAL FIGURES ARE FOR REFERENCE ONLY.
- PACKAGING AND PACKING: THE FINISHED PART SHALL BE PRESERVED AND PACKAGED IN ACCORDANCE WITH MANUFACTURERS BEST COMMERCIAL PRACTICE.
- IDENTIFY PER MIL-STD-130 PARA 4.1 B, BY LABELING ITS CONTAINER WITH THE PART NUMBER, CHARACTERS MINIMUM TEXT HEIGHT 1.25 MM.



(WEIGHT: 0.01 kg APPROX.)

DWG NO. Y05288A-01		SHEET REV RECORD	
ALL SHEETS ARE THE SAME REVISION			

REV	ECO	DESCRIPTION	DATE	APVD
01	ECH5800	Restricted	08-Feb-18	Z. Rabeyev
		Released	09-Apr-18	L. Goldstein



3.2 (1.6)

SEE ATTACHED MEDIA

UNLESS OTHERWISE SPECIFIED		DIMENSIONS ARE IN MM PER ASME Y14.5M-1994	
TOLERANCES		ANGULAR	
LINEAR		SEE NOTE 6	
1st ANGLE PROJECTION		SEE NOTE 6	
SURFACE TEXTURE IN Micro METER		PLM Control	
PROJECT OFFICER	SURFACE OFFICER	OFFICER/PRODN	OFFICER/QC
SIGNATURE		DATE	
TITLE		ORDNANCE FACTORY TRUCHINAPALLI	
PUSHER TRIGGER		FOR: BLOCK INSTALLATION	
SCALE	2:1	DWG NO	Y05288A-01
AUTOMATED DRAWING (SM)		SHEET 1 OF 1	

42062 7490316405