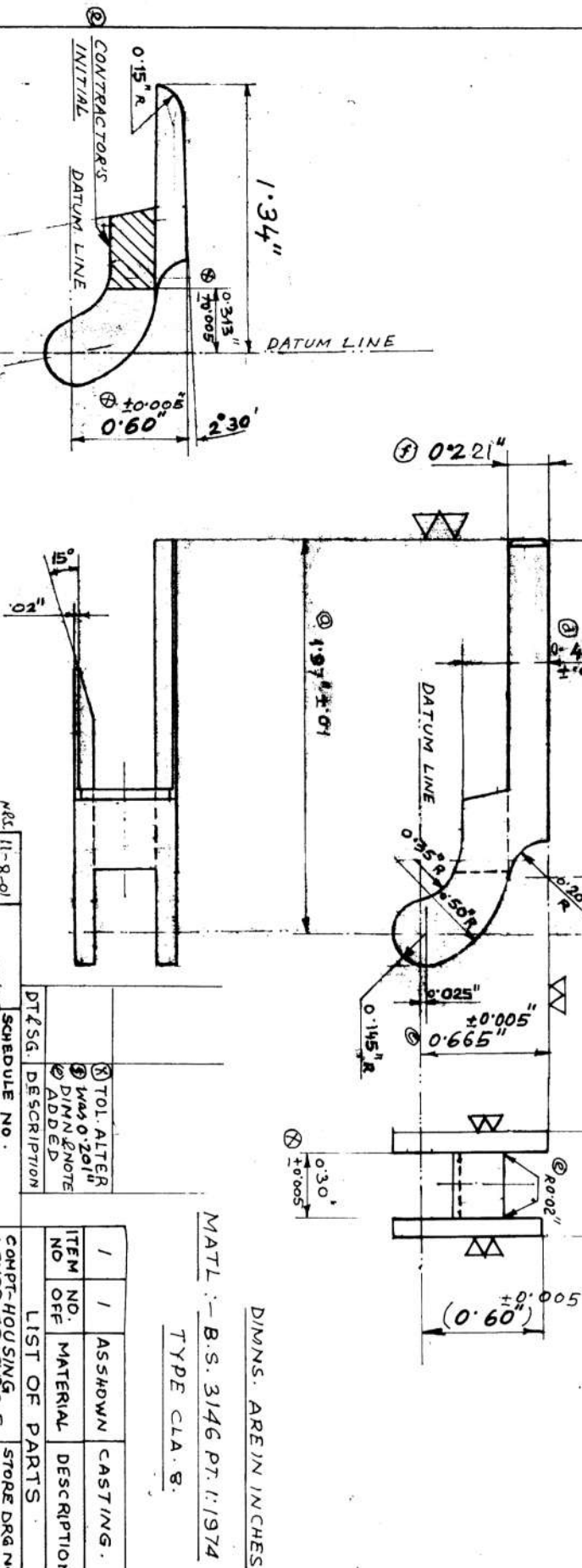


5. THREE TEST PIECE FROM EACH BATCH OF CASTING ARE TO BE SUPPLIED ALONG WITH EVERY CONSIGNMENT. THE PIECE SHOULD ATTAIN HARDNESS OF 400 - 450 V.P.N.
6. ∇ - INDICATES SURFACE TO BE MACHINED.
7. STRAIGHTNESS, PARALLELISM & SQUARENESS TO BE MAINTAINED WITHIN 0.005"
8. FEED PADS TO BE REMOVED/GROUNDED TEST -
1. CHEMICAL ANALYSIS & PHYSICAL TESTS OF CASTING ARE TO BE SUPPLIED
2. 100% MAGNETIC TEST & 3% RADIOGRAPHY TEST TO BE CARRIED OUT FOR BULK SUPPLY



NOTE:-
 1. UNSPECIFIED TOLERANCE AS PER IS: 11166-1984, CLASS-I
 2. FINISH DIMS. ARE GIVEN. SURFACE MUST BE SMOOTH FINISH.
 3. CASTING TO BE SUPPLIED IN HEAT TREATED CONDITION.
 4. HARDNESS - 200 TO 250 V.P.N.
 5. CASTING MUST BE FREE FROM ANY DEFECTS.

STATUS OF DRAWING IS "X" OF DRAWING No. CTC-0023 A AS ON 21-02-2012 & ISSUED TO P.V. A.P. BAIDYA (HOS / CDO)

DIMNS. ARE IN INCHES.

MATL:- B.S. 3146 PT. I: 1974
 TYPE CLA. B.

ITEM NO.	ASSHOWN	CASTING DESCRIPTION
1	1	ASSHOWN

LIST OF PARTS	STORE DRG NO.
COMP. HOUSING LEVER SHAFT (G.F. P. L. 7.65mm (0.300"))	M-8201

PRECISION CASTING
 CASTING DRG NO. CTC-0023A

DT/SG. DESCRIPTION	SCHEDULE NO.	PROJECTION THIRD ANGLE
1. TOL. ALTER WAS 0.2014 PINN. NOTE ADDED	11-8-01	1st
2. WAS 0.43	SCALE: 2:1	27-3-2001
3. WAS 0.645	DRAWN BY: P.V. 27-3-2001	
4. WAS 0.50	TRACED BY:	
5. WAS 1.95	CHECKED BY: P.V. 3.4.2001	
	APPROVED BY: P.V. 27-3-2001	
	CONCURRED BY: P.V. 16-4-11	

AMENDMENTS	DATE	SIGN.
DT/SG. DESCRIP.		

G.F.S. FY. COSSIPORE	SHEET NO.
	NO. OF SHEET - 1