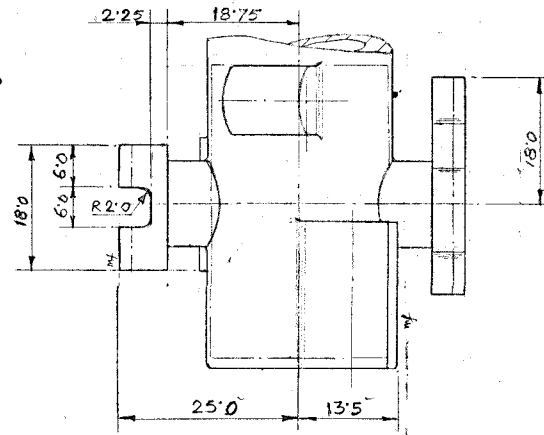
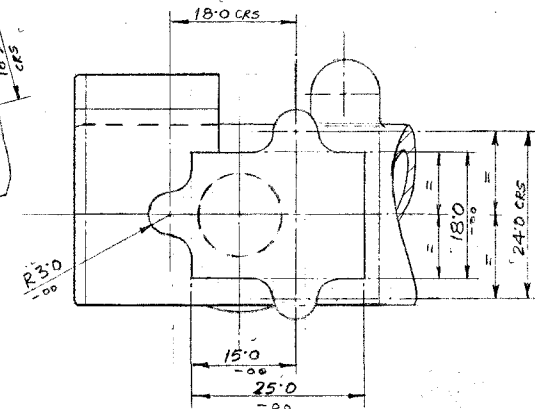
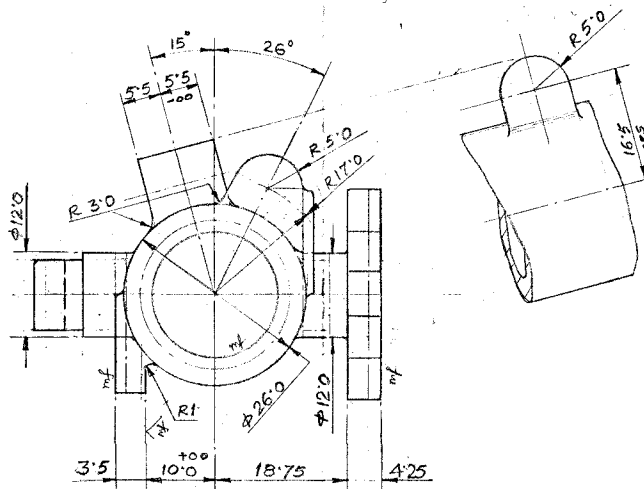
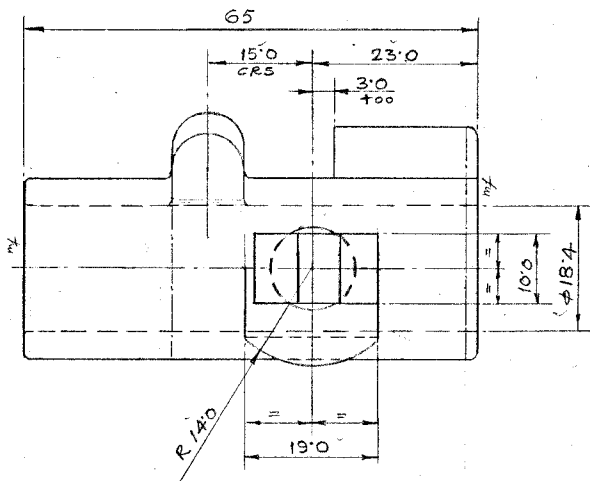


† ODD/C/871

NOTE:- COMPONENT DRAWING SHOWN IN CHAIN DOTTED LINES,  
MACHINING ALLOWANCES ARE ADDED BUT SHRINKAGE ALLOW-  
ANCES ARE NOT INCLUDED IN THE DIMENSIONS.  
SURFACES MARKED THUS 'mf' TO BE MACHINED.  
CASTING TO BE SUPPLIED IN NORMALISED AND SAND  
BLASTED CONDITION.  
UNSPECIFIED RADII TO BE R1



UNLESS OTHERWISE STATED THE FOLLOWING  
TOLERANCE WILL BE ACCEPTABLE  
UPTO 25mm  $\pm 0.12$   
FROM 25mm TO 37mm  $\pm 0.20$   
FROM 37mm TO 50mm  $\pm 0.24$   
FROM 50mm TO 75mm  $\pm 0.36$   
FROM 75mm TO 100mm  $\pm 0.48$  AND SO ON



MATL: BRASS. DC B2  
OF IS: 1264-1989

आयुध निर्मात्री  
देहरादून

रेखन- ४२५ अक्षरखन-  
ऑच- ऑच-  
अनुमोदित  
25/10/96  
प्र/अ.अ.

ML-  
का प्र/थो  
ड्राइंग नं.  
IRDE-68/40

साइट यूनिट केस 102 बी  
होल्डर  
(इन्वेस्टमेंट कास्टिंग)

दि-6-6-96	घेमाना- 2.1
ग्रामजी	उपचार
उपर देखो	-
REF: R&D VE/01/96 DT 23.5.96	
शीट्स - 1	शीट - 1
संशोधन	ड्राइंग नं.
OFD/DO/002	ODD/C/871