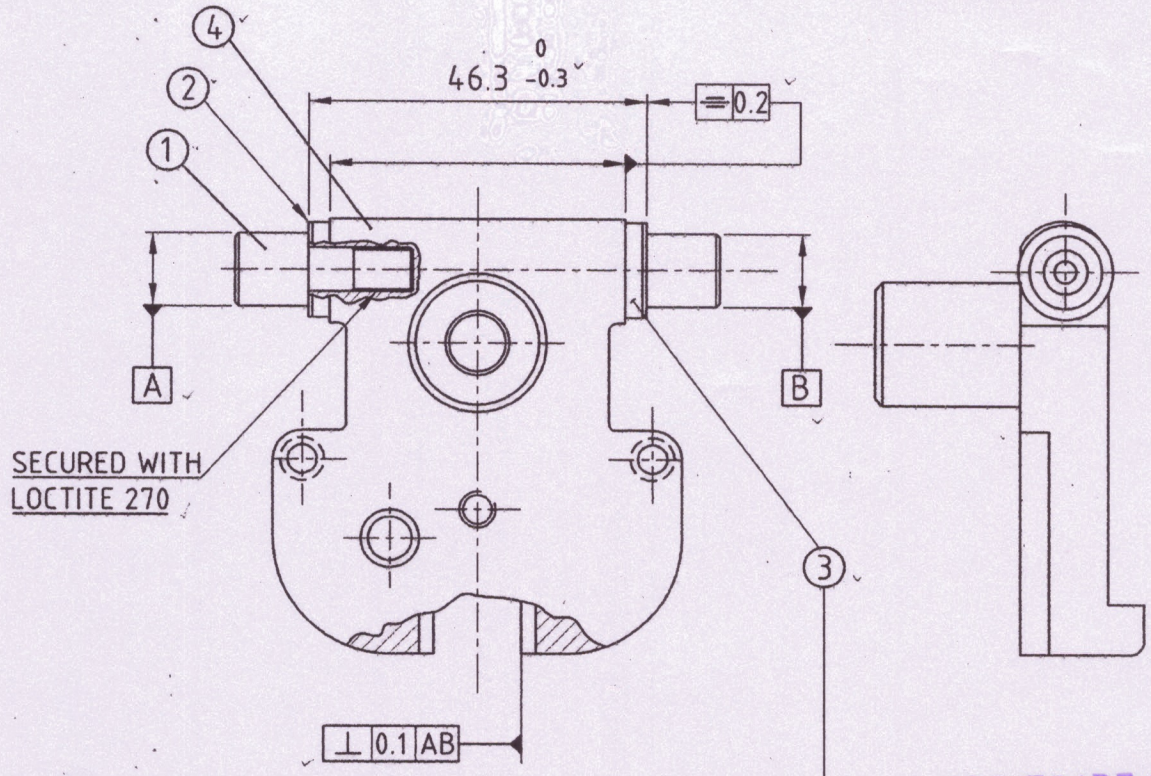


TELESCOPE SIGHT FOR 84 mm. CARL GUSTAV MK-III
MOUNTING PLATE, ASSY.
FFV 557

DRG. No.-
 F 1303-028360 A. ✓

MCT-2289

ORDNANCE FACTORY, DEHRADUN.



THE RUBBER RING SHALL ALWAYS BE COMPRESSED WITH IN STATED DIMENSION 46.3 ± 0.3 SO THAT WASHER WILL BE AXIALLY TENSIONED.

FOR TRADE OFF
 Date of Issue 14/12/06
 Rgpi

DET.	QTY.	SCHEDULE OF PARTS	REFERENCE	
1	2	TRUNNION ✓	F 1303-028370	MCT-2393/1
2	2	WASHER	Gf 215105 ✓ →	MCT-2395/1
3	2	RUBBER WASHER	Gf 215104 ✓ MC	T-2394
4	1	MOUNTING PLATE	F 1303-028380	MCT-2392/2

ALL DIMENSIONS ARE MM.
 IMPORTANT DIMENSIONS MARKED THUS ●
 INFORMATION MARKED THUS † TO BE MARKED ON.

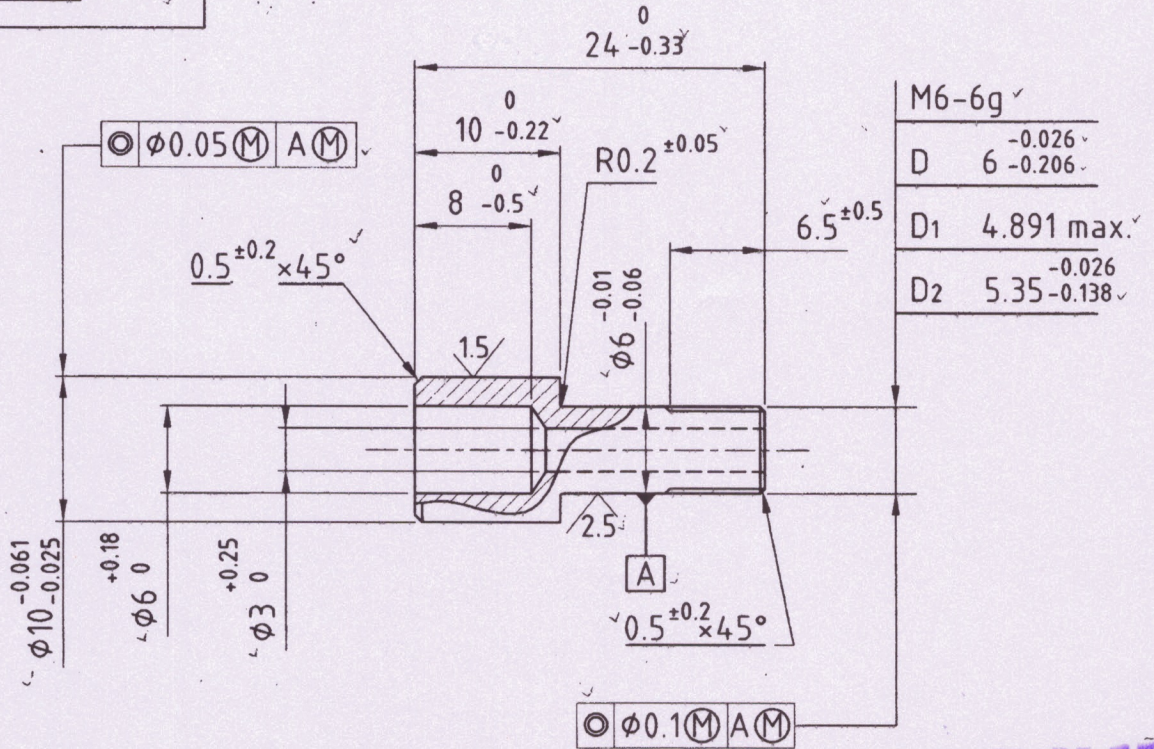
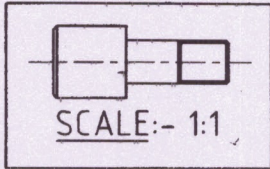
	DR.- R.K.SHARMA	DT.-12.8.06	SCALE- 1:1
	TR.-	MATL.-	TREAT.-
	CH. <i>Chander</i>	SHTS.-	SHT. NO.-
	APPROVED.	DRAWING No.- MCT-2289	
AMENDMENTS.	<i>fiosh</i>		
OFD/DO/002	IC/DO. DGM/P.		

TELESCOPE SIGHT FOR 84 mm. CARL GUSTAV MK-III TRUNNION

DRG. No. -

F 1303-028370C ✓

MCT-2393/1



M6-6g ✓	
D	6 ^{-0.026} / _{-0.206}
D1	4.891 max. ✓
D2	5.35 ^{-0.026} / _{-0.138}

FOR TRADE USE
Date of Issue 14/12/2020
Rg

MATL :- IS: 5517-93 STEEL DESIGN 50 C & A V2

TREAT :- NITROCARBURIZED FZ min 10 μm, max 15 μm OXIDATION-TREATED.

ALL DIMENSIONS ARE MM.

IMPORTANT DIMENSIONS MARKED THUS ●

INFORMATION MARKED THUS † TO BE MARKED ON.

	DT.-13.8.06	SCALE- 2:1
DR.- R.K.SHARMA	MATL. AS ABOVE	TREAT. AS ABOVE
TR.-	SHTS.-	SHT. NO.-
CH. <i>Chandani</i>	DRAWING No.- MCT-2393/1	
DANo 18/2014 Dt 16/10/14		
AMENDMENTS.		
OFD/DO/002		
APPROVED.		
<i>Josh</i> IC/DO.	<i>[Signature]</i> DGM/P.	

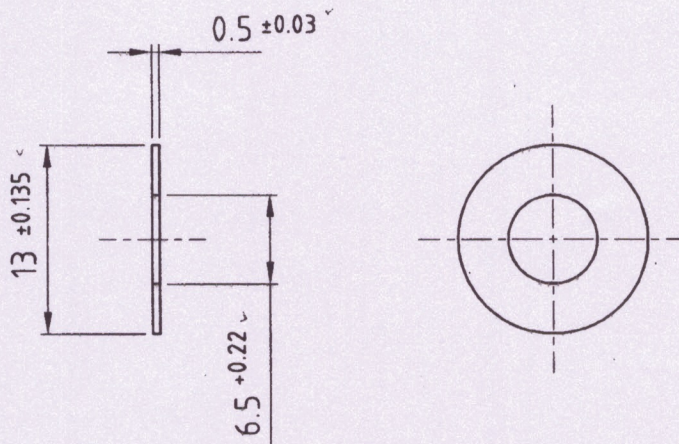
ORDNANCE FACTORY, DEHRADUN.

ORDNANCE FACTORY, DEHRADUN.

TELESCOPE SIGHT FOR 84 mm. CARL GUSTAV MK-III
WASHER

DRG. No. -
Gf 215105 ✓

MCT-2395/1



MATL.:- BS:1449 Pt.1-83 Gde 70 'CS' WITH RESTRICTION %
& % P = 0.025 MAX. (EACH)

TREAT :- ALKALINE BLACKENED AND OILED TO GF 1.003.063 -

FOR TRADE USE
Date of Issue 14/12/2010
Raji

ALL DIMENSIONS ARE MM.
IMPORTANT DIMENSIONS MARKED THUS ●
INFORMATION MARKED THUS † TO BE MARKED ON

	DT.-12.8.06	SCALE- 2:1
	DR.- R.K.SHARMA	MATL. AS ABOVE
	TR.-	TREAT. AS ABOVE
	CH. <i>Chandani</i>	SHTS.-
		SHT. NO.-
DA No 18/2014 DT 16/10/14	APPROVED.	DRAWING No.- MCT-2395 / 1
AMENDMENTS.	<i>Josh</i>	
OFD/DO/002	IC/DO. DGM/P.	

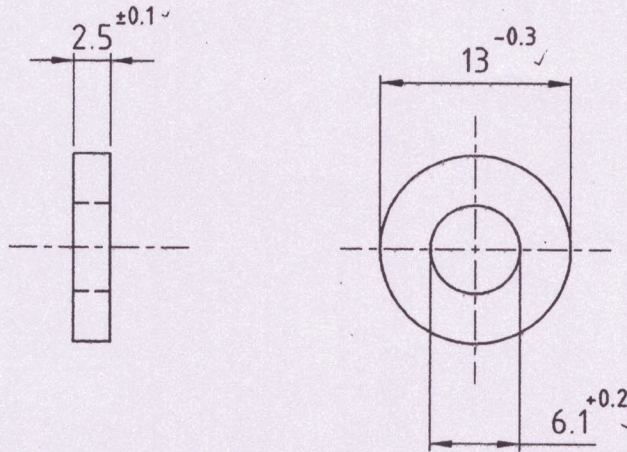
TELESCOPE SIGHT FOR 84 mm. CARL GUSTAV MK-III RUBBER WASHER

DRG. No.-

Gf 215104 ✓

MCT-2394

ORDNANCE FACTORY, DEHRADUN.



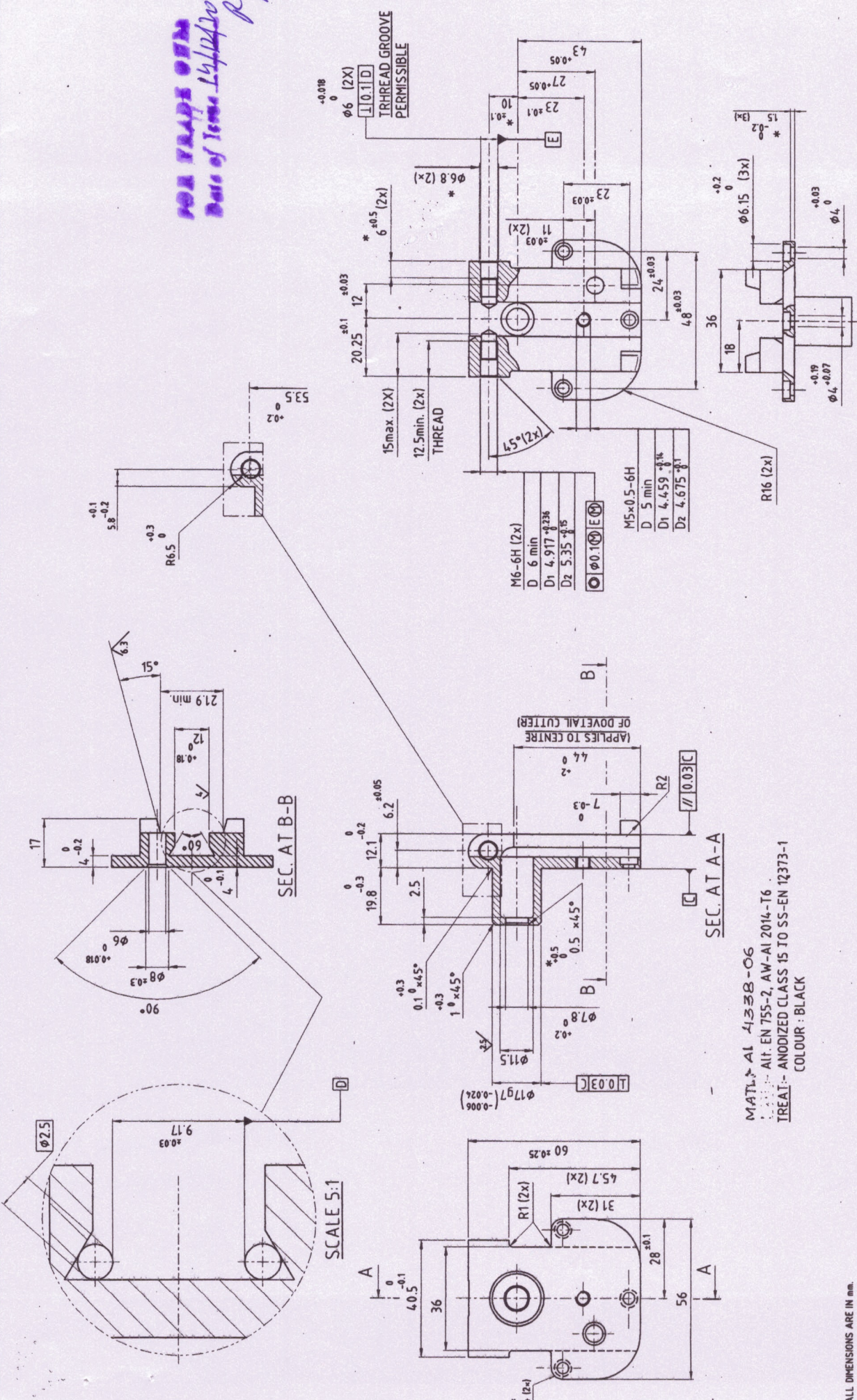
FOR TRADE ONLY
Date of Issue 14/12/2006
Raj

MATL. :- NITRILE RUBBER HNBR COLOUR : BLACK °SHORE = $90^{\circ} \pm 5^{\circ}$

ALL DIMENSIONS ARE MM.
IMPORTANT DIMENSIONS MARKED THUS *
INFORMATION MARKED THUS † TO BE MARKED ON.

		DT.-12.8.06	SCALE- 2:1
	DR.- R.K.SHARMA	MATL.	TREAT.
	TR.-	AS ABOVE	-
	CH. <i>R.K. Sharma</i>	SHTS.-	SHT. NO.-
	<u>APPROVED.</u>	<u>DRAWING No.-</u> <u>MCT-2394</u>	
AMENDMENTS.	<i>R.K. Sharma</i>		
OFD/DO/002	IC/DO. DGM/P.		

FOR TRADE USE
 Base of Telescope Sight Mk-II
 pg-1



ORDNANCE FACTORY DEHRADUN		DR- R.K.SHARMA	TELESCOPE SIGHT FOR 84 mm. CARL GUSTAV MK-II		DT- 02.08.2006	SCALE- N.T.S.
TR-	APPROVED:	DRG. No. - F-1303-028380 D	MOUNTING PLATE		MATL. AS ABOVE	TREAT AS ABOVE
CH-	IC/DO.	F-1303-028380 D	FFV 557		SHTS.- 1	SHT. NO.- 1
DRAWING NO.- MCT-2392/2		AMENDMENTS.		DRG. NO. 19/2014 D.P. 16/10/14 * D.A. No. 1272009 DT. - 12/12/2009		

MATL- AL 4338-06
 AL EN 755-2, AW-AL 2014-T6
 TREAT- ANODIZED CLASS 15 TO SS-EN 12373-1
 COLOUR- BLACK

ALL DIMENSIONS ARE IN mm.