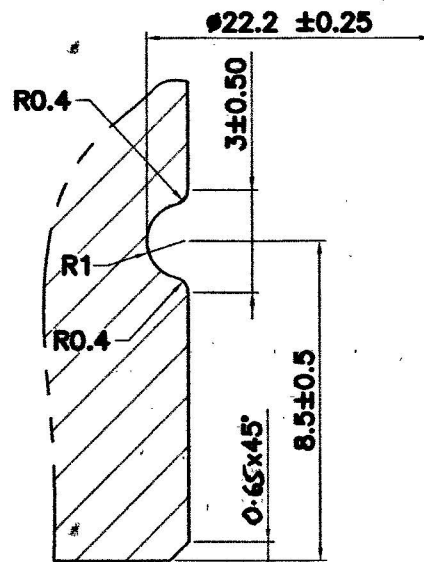
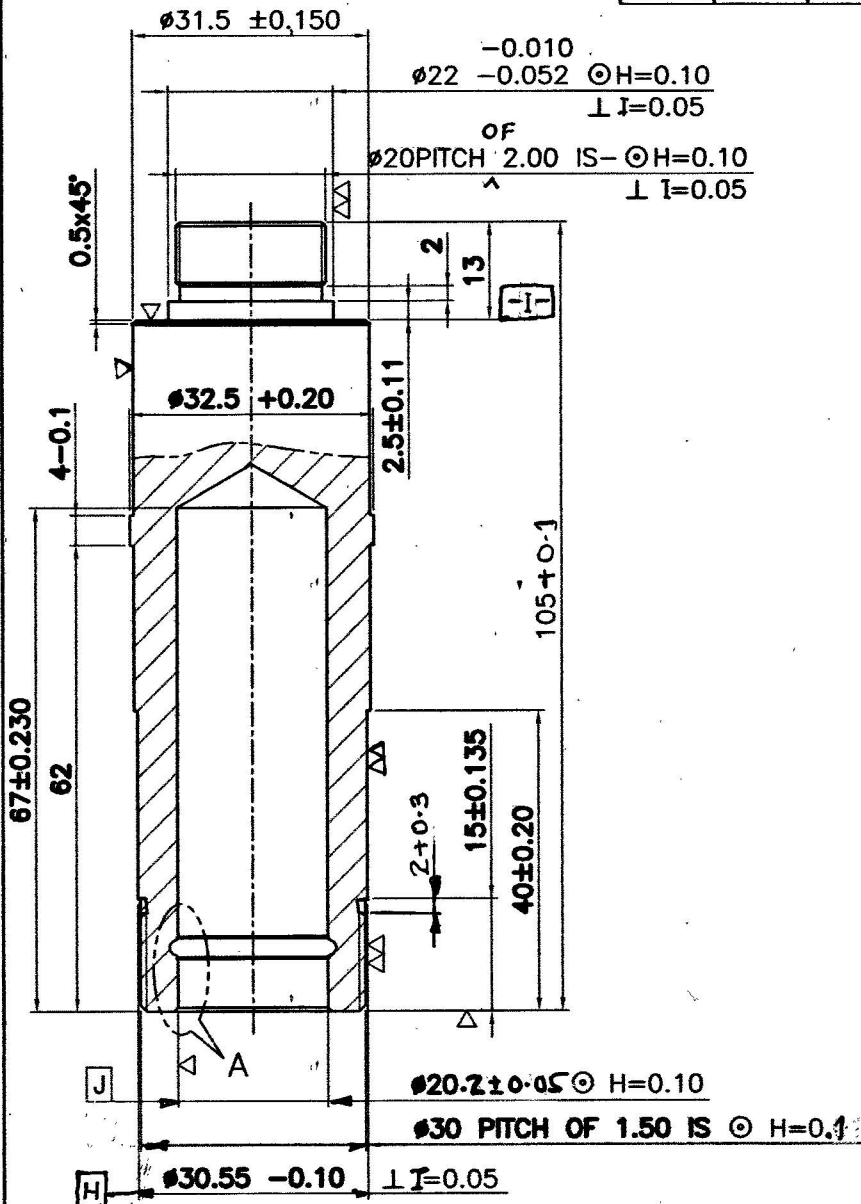


DRG. NO: FS-2956C

AMENDMENTS

REV	DATE	DESCRIPTION	SIGN
A $\frac{184}{11}$	23/7/11	On dia 30 pitch of 1.5 is $\odot H=0.1$ was $\odot H=0.01$.	<i>ANM/FS</i>
B $\frac{51}{13}$	12/4/13	Dim 20.2 ± 0.05 was $\phi 20 \pm 0.1$ & chamfer 0.5 was 0.5x45° Dim adv. to B	<i>ANM/FS</i>
C $\frac{26}{204}$	4.2.14	ALT. MATL. ADDED & UPDATED AS PER LATEST DC 37344-A Dt. 9.10.13	<i>Ksh</i>



VIEW AT 'A'
SCALE:5:1

MATERIAL:- (AMD 5879, FEB 89)
BS1474:1987 HE 15 TF OR
IS:733-1983 (THIRD REVISION) ALLOY
DESIGNATION 24345 WP.

ALT. MATERIAL: AL. ALLOY RDE 40 WITH
MINIMUM MECHANICAL PROPERTIES
AS UNDER 0.2% PS-435 MPa, %EL-7
UTS- 480 MPa

NOTE:-

1. TOLERANCE UNLESS OTHERWISE STATED= ± 0.1
2. THOUGH SURFACE TREATMENT IS NOT TO BE DONE, SURFACE OF THE COMPONENT SHOULD BE PROPERLY PROTECTED TO AVOID STORAGE & TRANSIT DETERIORATION.
3. ALL BURRS TO BE REMOVED AFTER DRILLING.



DIMENSIONS ARE IN mm			MATERIAL: AS STATED		ऑर्डनेंस फैक्टरी अम्बाझरी ORDNANCE FACTORY AMBAZHARI
THIRD ANGLE PROJECTION			NOMENCLATURE:		
SCALE: 1:1			SEMI-FINISH CONTAINER CARTRIDGE (TURNED FINISH EXCEPT CENTRE HOLE)		DRG. NO. FS-2956 C
2010	NAME	DATE			SHEET NO. 1
DRAWN	सतिश वाडबुधे	25-10-2010			NO. OFF SHEETS 1
CHECKED	<i>[Signature]</i>				OPERATION -
I/C/CDD	<i>[Signature]</i>				COMPT: CONTAINER CARTRIDGE (IV-30)
APPVD.	Jt.GM/FS	<i>[Signature]</i>	M/c.-	STORE: 81mm MORTAR	