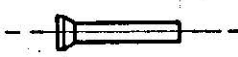
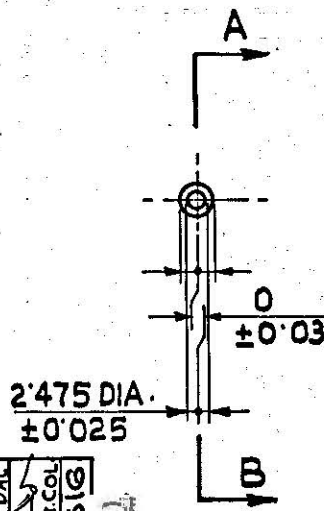
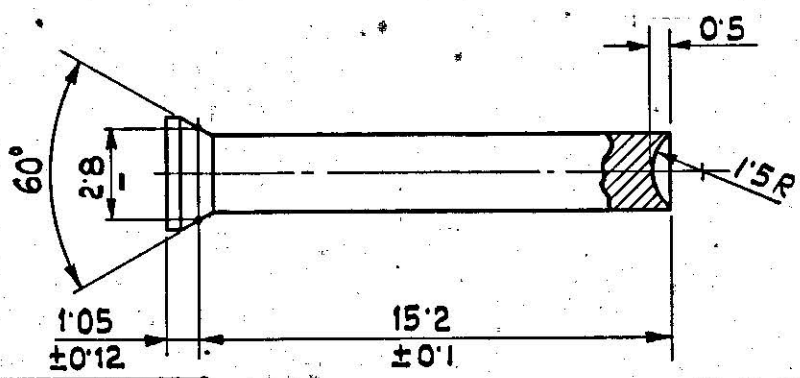


A
B
C
D
E
F
G
H
I
J
K
L
M
N
O
P
Q
R



NOTE
 ACCEPTANCE STANDARDS FOR MACRO ETCH TEST AND MICROSCOPIC DETERMINATION OF NON METALLIC INCLUSIONS FOR STEEL.
 i) MACRO ETCH TEST AS PER ASTM E 381 WITH ACCEPTANCE STANDARD AS C2, R2, S2
 ii) NMIR TEST AS PER IS: 4163-82.



RECORD OF RECEIPT CANCELLED AND ORG. SEALED AFRESH.
 25359-10.05 SA 2002
 22278-22.9 SA 93
 AUTHY DATE BRIEF RECORD SIG.
 DC No. 27012-SA, DT. 14-01-2007 - MATERIAL AMENDED.

22119-SA	20.1.93	"ACCELERATED" ADDED IN PROTECTIVE FINISH.	MAJOR
21609-SA	21.3.92	DS CAT No. ADDED & FINISH AMENDED	LT COL
19845-SA	26.11.87	MATL. AMENDED	LT COL
18079-SA	10.9.84	MATL. AMENDED	SSO
16538-SA	11.9.80	DS CAT NO. ADDED	DSS
15414-SA	13.12.77	DRG. SEALED AS A RECORD OF RECEIPT. MATL. & PROT. FINISH ADDED. CL. NEG. PREPARED.	CL. NEG. PREPARED
AUTHY.	DATE	ZONE	BRIEF RECORD. SIG.

DS CAT NO. 5315-001526
 PARTIAL SECTION-AB
 SCALE :- 4:1

160
 EVERYWHERE.

MATERIAL: IS: 5517-1993 DESIGNATION 40C8
 PROTECTIVE FINISH:- PHOSPHATE TO SPECN. JSS: 0465: 01-1988 CLASS II OIL FINISH
 (ACCELERATED) OIL FINISH.

DGN.	DATE	NAME	ASSY. PART NO. 1005-006625	CI(SA) ICHAPUR.
DRN.			MATERIAL:- AS STATED	
CHD.			DIMENSIONS ARE IN MILLIMETRES.	
TRD.		B.L.NATH.		APPROVED.
COMP.				(CL. NEG. PREPARED)
Mhally: 1/c. D.O.			RETAINING PIN, FEED STUD.	FOR CI(SA)
SCALE :- 1:1, 4:1				DRG.No. A 1242
SEALED:- DC.No. 25359-SA DT.10.05.2002				PART No. 320