

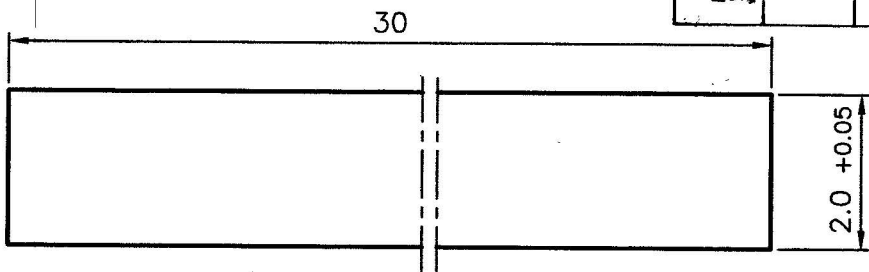
DRG. NO : FS-2483 C

**A M E N D M E N T S**

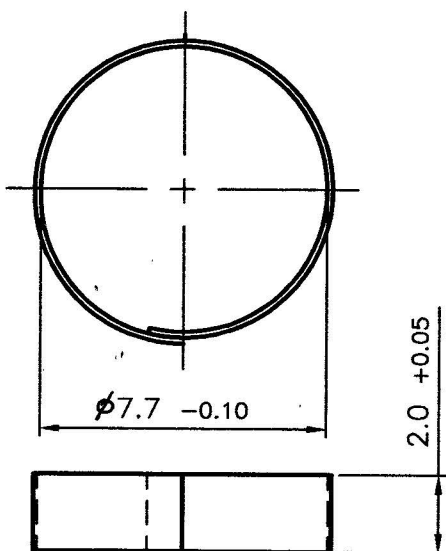
TOLERANCE ON UNTOLERATED DIMNS. ARE AS PER IS: 2102, MEDIUM CLASS

PROVISIONAL

REV.	DATE	DESCRIPTION	SIGN.
A 24/04	10-08-04	Material: Sheets spec added by deleting BS 970: part 3: 1991 which is for rods/bars only. Drg. marked provisional.	JGM/R&D
B 177 2016	11-8-16	Mat. EN 10088-2, 1-4301 2H + C 1300 was BS 1449 Pt 2 1983 Grade 304S15 Tempered re.B. Drg adv. to B	JGM/lec
C 40 2017	10-4-17	Material condition +C1000 was +C1300. Drg adv. to C.	RH A-WM/lec



STRIP LENGTH = 30mm  
 STRIP THICKNESS = 0.15mm  
 SCALE 10:1



MATERIAL: EN 10088-2, 1-4301  
 2H + C 1000

0.025 /

DIMENSIONS ARE IN mm			MATERIAL : AS ABOVE		ORDNANCE FACTORY AMBAJHARI
THIRD ANGLE PROJECTION			NOMENCLATURE :		
SCALE : 5 : 1			ROTOR SPIRAL		DRG. NO :
2004	NAME	DATE			FS-2483 C
DRAWN	<i>Metashy</i>	02/03/04			SHEET NO : 1
REDRAWN					NO. OF SHEETS : 1
CHECKED	<i>Boomal</i>	03/03/04			OPERATION NO :
JWM/CDD	<i>Boomal</i>	03/03/04	COMPT. : FUZE M859		
APPVD.	JGM/R&D	<i>ll</i>	03/03/04	MACHINE :	
				STORE :	
				AMMN. 20mm AMR SAPHEI	