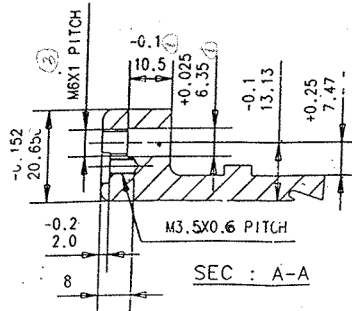
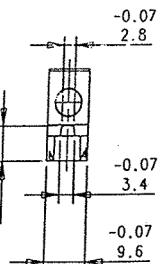
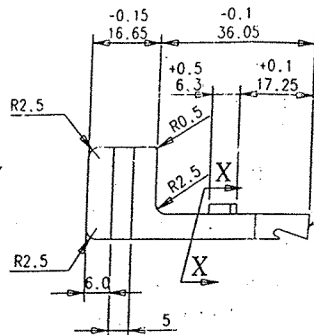
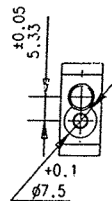
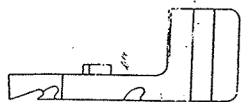
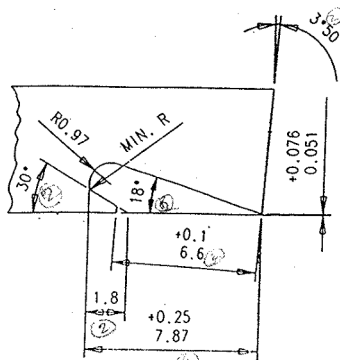


ENLARGED VIEW
SCALE- 2:1



SEC : A-A



ENLARGED VIEW
SCALE:- 5:1

DIMENSIONS ARE IN mm.
UNTOLERATED DIMNS. AS PER IS : 2102 (MED)
MARK DRAWING No.

NOTE :-

- 10 NOS. OF SAMPLE TO BE SUBMITTED BY THE SUPPLIER/MFR. FOR FITMENT AND FUNCTIONAL TEST BEFORE BULK SUPPLY.
- ALL SHARP EDGES TO BE REMOVED.

HEAT TREATMENT :-

HARDENED TO RIGHT OF THE LINE X-X.
FACE D TEMPERED TO A HV OF 550-650
REMAINDER OF HARDENED SURFACE TO BE TEMPERED TO A HV OF 450-550

FINISH:-

PHOSPHATE TO SPECN.JSS:0465:01-1988
CLASS 1 PAINT REFU-STOVING-BLACK TO SPECN.JSS:8010-37 MATT FINISH.

FACE 'D' TO BE POLISHED AFTER ANTIRUST FINISH.

MATERIAL- B.S.970 PT.1:1983 GR.709 M-40 / ALT. En19

~~B.S.970 PT.1:1983 GR.080 M-40.~~ 001/15

ALT. MATL FOR MIM ROUTE ONLY.

MATL. SPECN.: MIM 4650

C-0.3 TO 0.6, Si-0.5 MAX.

Ni-1.5 TO 2.5, Mn-0.3 MAX.

Cr-0.5 MAX., P- 0.03 MAX

Mo-0.5 MAX., Fe- BALANCE

		AS ABOVE			
PART NO.	DESCRIPTIONS	NO OFF	MATERIAL	TREATMENT	REMARKS
	SIGNATURE & DATE.	SUB: COCKING PIECE			SCALE 1:1, 2:1
TRACED		FOR: 0.315" SPORTING RIFLE			5:1
DRAWN		DES.REF.NO. SP-16			STORE DRG.NO.
CHECKED		DRG. No.: 29 P 0016* 2			OPERATION NO.
OIC/D&DO		ORDNANCE FACTORY			SHEETS: 01
OFFICER/PRODN.		TIRUCHIRAPPALLI-16.			SHEET No.: 01
OFFICER/D&DO					
AMENDMENTS	SIG. & DATE	APPROVED ON. 11/2004			

001/15

DA No 001/15
25.09.15
D.A. 1150
8996/14/
DD0/01
Dt-29.5.09

P. Purohit
b20