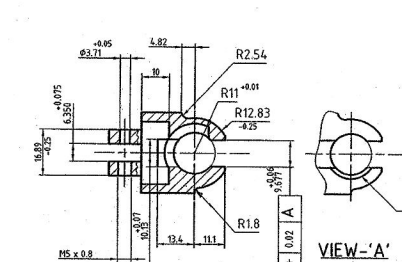
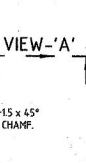


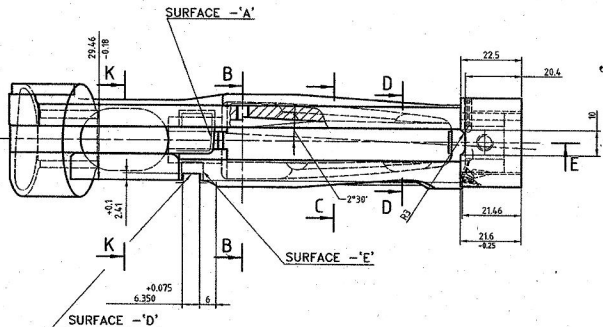
SECTION B-B



SECTION K-K

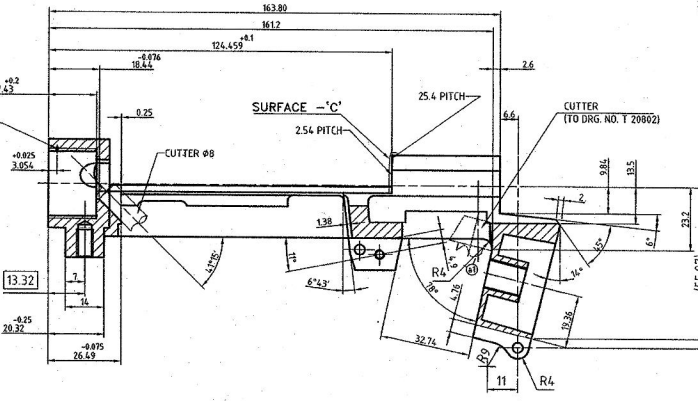


VIEW -A-



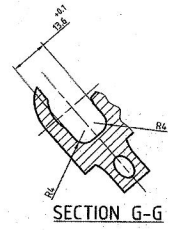
SURFACE -A-

SURFACE -E-

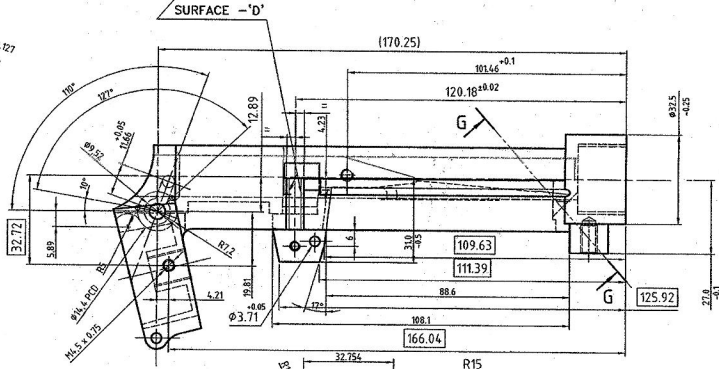


SURFACE -C-

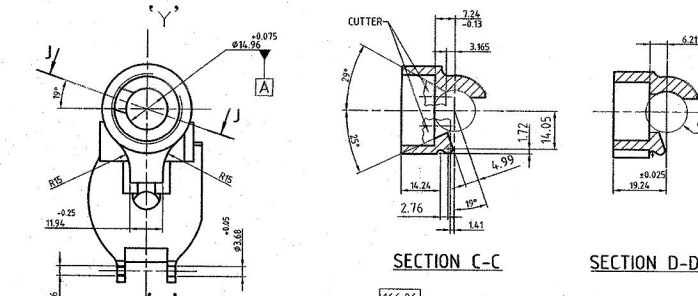
SECTION C-C



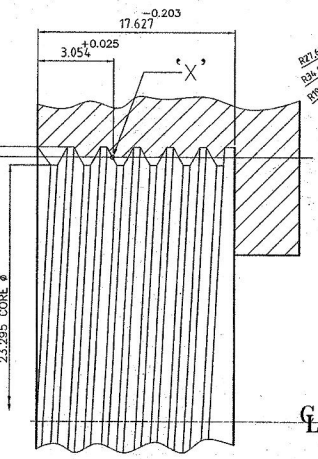
SECTION G-G



SECTION D-D



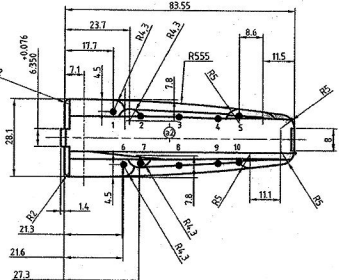
SECTION E-E



ENLARGED VIEW SHOWING START OF THREAD ON VERTICAL AXIS 'YY' AT 'X' 1.5 PITCH METRIC S.I. FORM.

POINT	CO-ORDINATE 'X'	CO-ORDINATE 'Y'
0	0	0
1	-65.403	8.967
2	-55.860	9.106
3	-41.860	8.909
4	-27.701	8.473
5	-20.201	8.377
6	-61.935	-9.129
7	-55.848	-9.126
8	-41.848	-9.052
9	-27.689	-8.632
10	-20.189	8.595

DIMENSIONS ARE IN mm.
 IMPORTANT DIMS. MARKED THUS @
 INFORMATION MARKED THUS 't' TO BE MARKED ON
 UN TOLERATED DIMS. ASPER IS: 2102(MEDIUM)



VIEW OF MAGAZINE POCKET OPENING

CERTIFIED CORRECT COPY OF APPROVED DRAWINGS AT THIS DATE
 17.08.2020
 Design & Drawing Office
 Ordnance Factory,
 Tiruchirappalli-600018

UN CONTROLLED COPY

NOTE:-
 REFERENCE POINT OF BOTH THE LUGS (LOWER & UPPER) OF HELICAL SURFACES SHOULD BE CONTROLLED WITH IN 0.05mm TOLERANCE

ALT. MATERIAL:-
 BS- 970 PT.-1983 GR. 826 M-31 T' CONDITION WITH 150 LBS.

MATERIAL:-
 BS- 970 En 21 R'

NOTE: MANUFACTURE SHOULD SUPPLY 5 NOS OF SAMPLES FOR TRIAL REPORT BULK SUPPLY.

PART NO.	DESCRIPTIONS	NO OF	MATERIAL	TREATMENT	RE

SIGNATURE & DATE: DRAWN: [Signature] CHECKED: [Signature] HOS/DDO: PRON: [Signature] INCHAL OFFICER: OFFICER DDO: [Signature]	SUB: BODY (WHITE FINISHED) OF: 0.315" SPORTING RIFLE DES. REF. No: 29P 0012 '2 DRG. NO: TEND - 2644	SCALE: 1: STORE G: OPERATOR: SHEETS: SHEET N
APPROVED ON: 13/08/2020	ORDNANCE FACTORY TIRUCHIRAPALLI-16	SHEETS: SHEET N