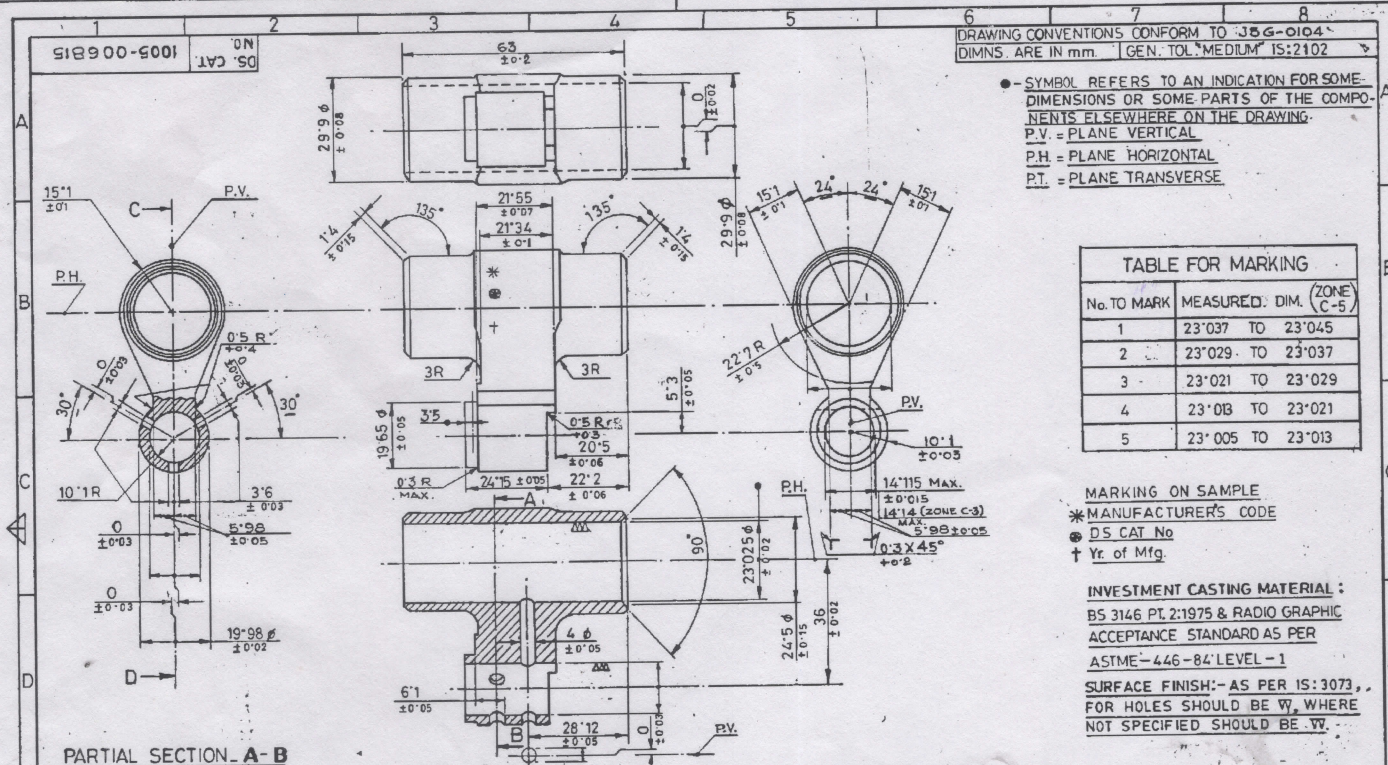


1



DRAWING CONVENTIONS CONFORM TO IS: 56-0104
DIMNS. ARE IN mm. GEN. TOL. "MEDIUM" IS: 2102

● SYMBOL REFERS TO AN INDICATION FOR SOME DIMENSIONS OR SOME PARTS OF THE COMPONENTS ELSEWHERE ON THE DRAWING.
P.V. = PLANE VERTICAL
P.H. = PLANE HORIZONTAL
P.T. = PLANE TRANSVERSE

TABLE FOR MARKING		
No. TO MARK	MEASURED DIM.	(ZONE C-5)
1	23'037 TO 23'045	
2	23'029 TO 23'037	
3	23'021 TO 23'029	
4	23'018 TO 23'021	
5	23'005 TO 23'013	

MARKING ON SAMPLE
* MANUFACTURER'S CODE
● DS CAT No
† Yr. of Mfg.

INVESTMENT CASTING MATERIAL :
BS 3146 PT. 2:1975 & RADIO GRAPHIC
ACCEPTANCE STANDARD AS PER
ASTM E-446-84 LEVEL-1
SURFACE FINISH:- AS PER IS: 3073,
FOR HOLES SHOULD BE W, WHERE
NOT SPECIFIED SHOULD BE V.

DRN: <i>Shetty</i> CHD <i>Chh.</i> TRD: <i>Chh.</i> COMP: <i>Chh.</i>		ASSY. DS CAT NO: 1005-006803 & 1005-006603
SCALE: 1:1 EST MASS		
MFG/INSP. INSTRUCTIONS		
APPROVED: <i>Shetty</i> DT. 19.3.78		
IC.D.O. DRG. RE-DRAWN		
15.04.25328-SA RECORD OF RECEIPT CANCELLED AND DRG. SEALED AFRESH.	CD <i>Shetty</i> DT. 20-5-96	AHSP: CQA(SA) CHAPUR
16.5.96.23332-SA PROFORMA CHANGED, MATL & SURFACE FINISH AMENDED CONVENTION TOLERANCE & MARKING NOTE ADDED - DRG. REVISED RE-DRAWN COMPRISING THE EXISTING PART No. & RE-SEALED AS A RECORD OF RECEIPT.	MATERIAL: STEEL TO SPECN. BS 970 PT. 3:1991 GR. 410 S-21 OR 420 S 29.	DGNRS REF.
DATE AUTHY. BRIEF RECORD	HT/HARDNESS: 265 ± 300 BHN. सही प्रमाणित	PART No. 16001 D & 14001 D
SEALED:- D.C. No. 25328-SA DT. 13-04. 2002	PROTECTIVE FINISH: <i>Host</i>	DRG. No. A 2233 & A 2201
NOMENCLATURE: BLOCK GAS		DS. CAT. No. 1005-006815

Certified as correct copy
of drg. on *11/05/96*

क. कायशाला पवसक
Jr. Works Manager
डी.डी.नो.