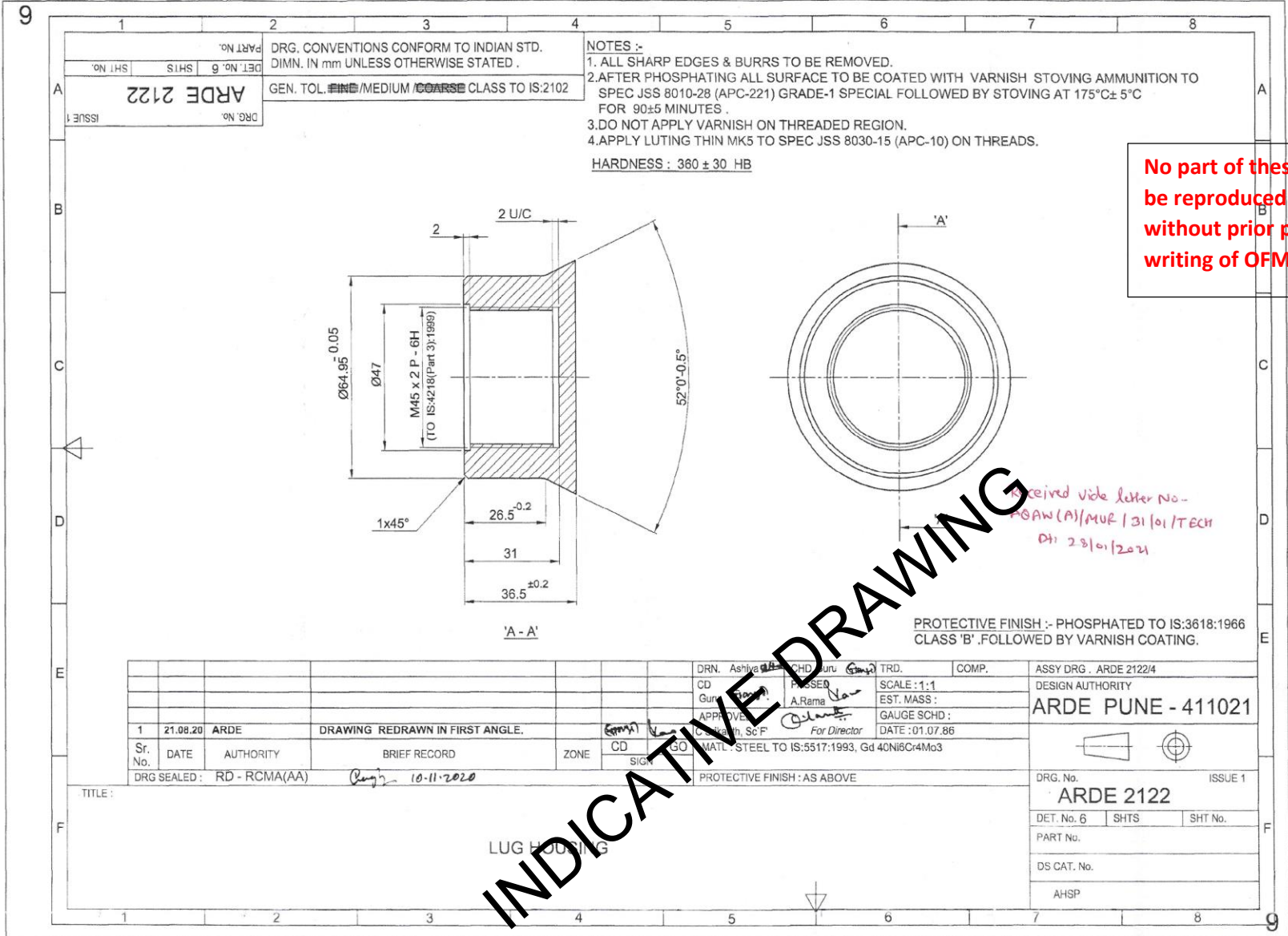


These drawings are only for reference.
Actual drawings may be different and shall be issued at the time for procurement.



No part of these drawings may be reproduced in any form without prior permission in writing of OFM.

- NOTES :-
1. ALL SHARP EDGES & BURRS TO BE REMOVED.
 2. AFTER PHOSPHATING ALL SURFACE TO BE COATED WITH VARNISH STOVING AMMUNITION TO SPEC JSS 8010-28 (APC-221) GRADE-1 SPECIAL FOLLOWED BY STOVING AT 175°C ± 5°C FOR 90 ± 5 MINUTES.
 3. DO NOT APPLY VARNISH ON THREADED REGION.
 4. APPLY LUTING THIN MK5 TO SPEC JSS 8030-15 (APC-10) ON THREADS.
- HARDNESS : 360 ± 30 HB

Received vide letter no. -
MSAW(A)/MUR/131/01/TECH
Dt: 23/01/2021

PROTECTIVE FINISH :- PHOSPHATED TO IS:3618:1966 CLASS 'B'. FOLLOWED BY VARNISH COATING.

DRN. Ashvini	CHD. Guru	TRD.	COMP.	ASSY DRG. ARDE 2122/4
CD. Gurus	PRESSER A.Rama	SCALE : 1:1	EST. MASS :	DESIGN AUTHORITY
APPROVED	For Director	GAUGE SCHED :	DATE : 01.07.86	ARDE PUNE - 411021
Sr. No.	DATE	AUTHORITY	BRIEF RECORD	ZONE
1	21.08.20	ARDE	DRAWING REDRAWN IN FIRST ANGLE.	CD
DRG SEALED: RD - RCMA(AA) 10-11-2020				SIGN
MATERIAL: STEEL TO IS:5517:1993, Gd 40Ni6Cr4Mn3				PROTECTIVE FINISH : AS ABOVE

TITLE: LUG HOUSING

DRG. No. ARDE 2122 ISSUE 1

DET. No. 6 SHTS SHT No.

PART No.

DS CAT. No.

AHSP

INDICATIVE DRAWING