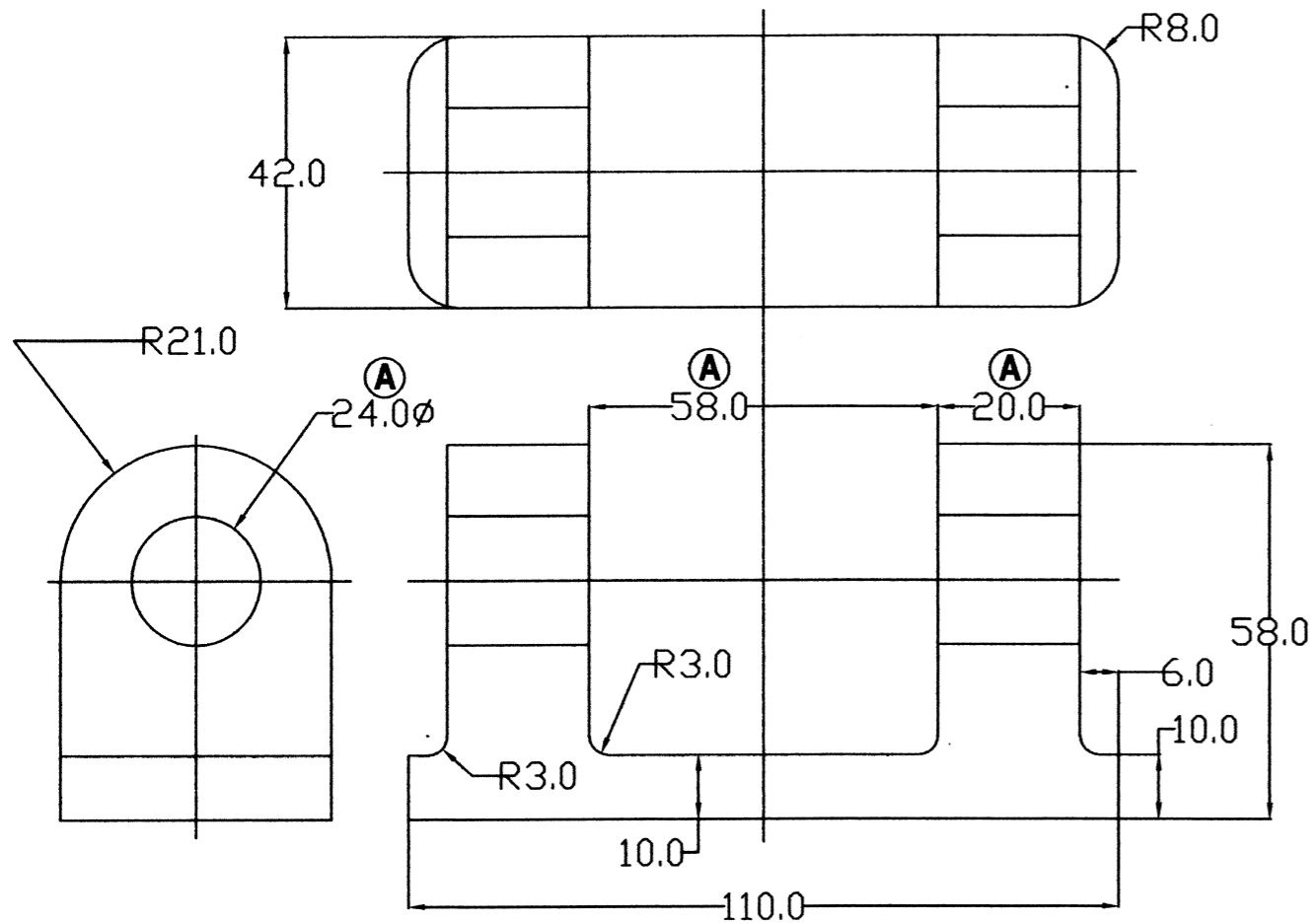


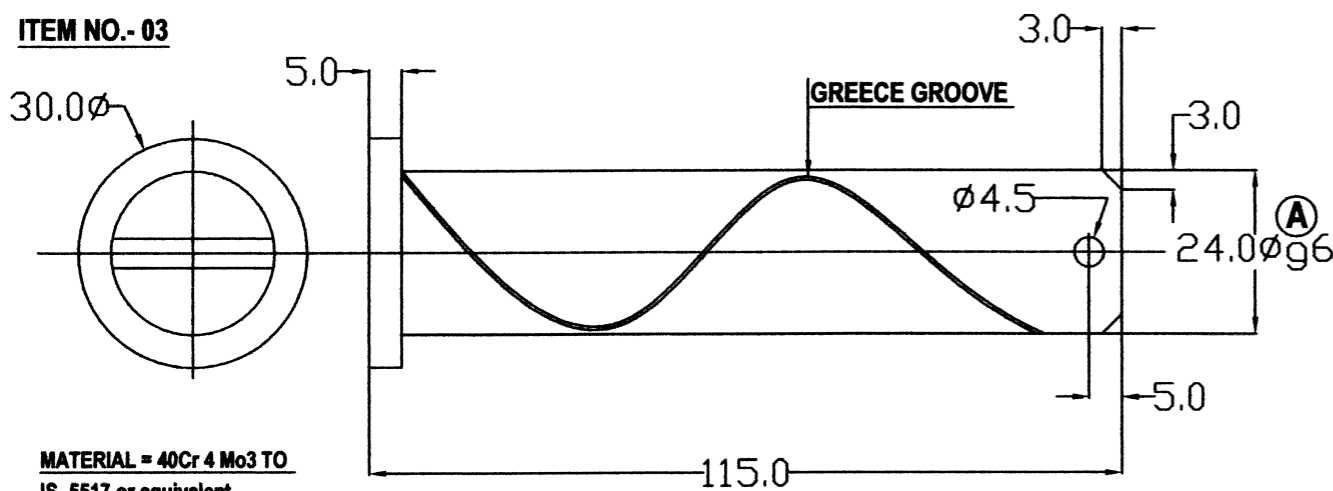
DRG. NO.- HULL/MPV/112/B

ITEM NO.- 01

MATERIAL = FORGING  
OF 40 Cr 4 TO IS : 4367-91  
or equivalent



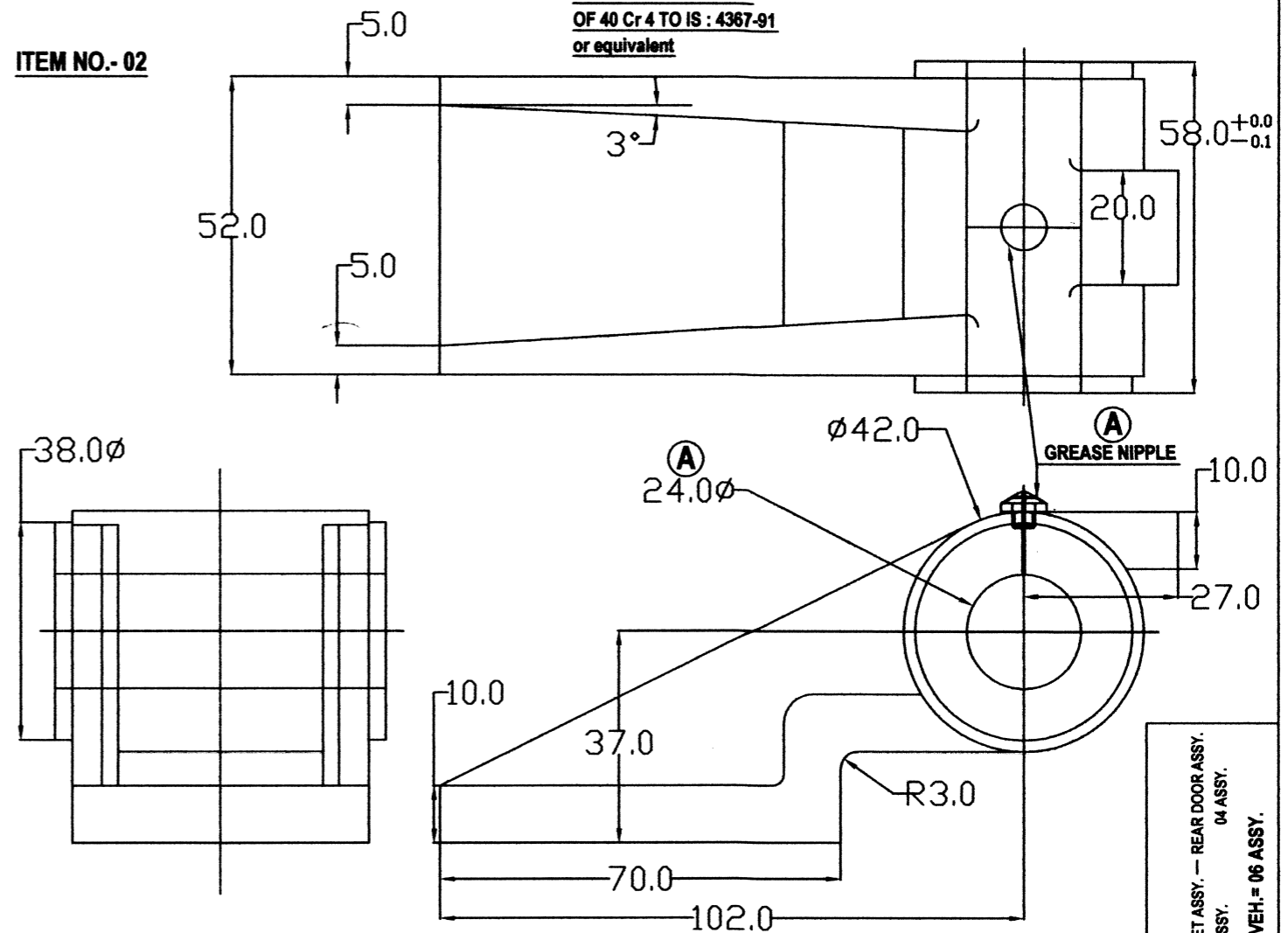
ITEM NO.- 03



MATERIAL = 40Cr 4 Mo3 TO  
IS- 5517 or equivalent.

ITEM NO.- 02

MATERIAL = FORGING  
OF 40 Cr 4 TO IS : 4367-91  
or equivalent



BONNET ASSY. - REAR DOOR ASSY.  
02 ASSY. 04 ASSY.  
QTY./VEH. = 06 ASSY.

AMENDMENTS "A" (DATE-30-12-2009)

- ITEM NO. 03 (PIN) DIA INCREASED FROM 20φG6 TO 24φ G6.
- IN ITEM NO. 01 DIMENSIONS 58.0, 20.0 WERE 54.0 AND 22.0.
- IN ITEM NO. 01 DIMENSIONS 24φ WAS 20φ
- IN ITEM NO. 02 DIMENSION 24φ WAS 20φ.
- IN ITEM NO. 02 GREASE NIPPLE PROVIDED.

NOTE:-

ALL THE COMPONENTS BE SUPPLIED IN ASSEMBLED CONDITION.  
PILOT SAMPLE TO BE APPROVED BEFORE BULK SUPPLY  
ALL DIMENSIONS ARE IN MM.  
THIS DRAWING SUPERSEDES PREVIOUS DRAWING VIDE NOS.-  
645-01-1317,1318,1319/1  
ⓐ IN TITLE BLOCK WORD (ARMY) DELETED.

APPROVED BY  
*J.G.W.V.*  
J.G.W.V.

ITEM	DESCRIPTION	NO. OF OFF	MAT.	STD.	SIZE/WT.	REMARKS	
03	HINGE PIN 645-01-1319	01	AS GIVEN	—	AS SHOWN	—	
02	HINGE 645-01-1318	01	AS GIVEN	—	AS SHOWN	—	
01	HINGE 645-01-1317	01	AS GIVEN	—	AS SHOWN	—	
				JWM/VDO	WM/BS		
INDEX	ALTERATION	DATE	SIGN.	C. SINGH DRN.	CKD.	APPD.	
DIM.	TOL.	<b>HINGES FOR REAR DOOR &amp; BONNET ASSY. OF M.P.V.</b>				645-01-1317,18,19-1	N.T.S.
0-30	±0.1					REF. DRG. NO.	SCALE
30-250	±0.2					MACHINE	14/09/09
250-800	±0.3					M. P. V.	DATE
800-2000	±0.5					REF. DEM. NO.	1/1
>2000	±0.8		SHTS.				
GEN. TOL.				VEHICLE FACTORY JABALPUR		DRG. NO.- HULL/MPV/112/B	
V.D.O.							