

USED ON

172.45.060cbCb
~~175.45ebCb~~
 188.45.001cb-3Cb

(10B)

(10)

(10A)

(10)

15-09-06

"COMMON TO T-90"

(B. JAYAVELU, JTOID) /L RE-CREATED BASED ON RUSSIAN ORIGINAL ISSUE - 9

F - 84

11

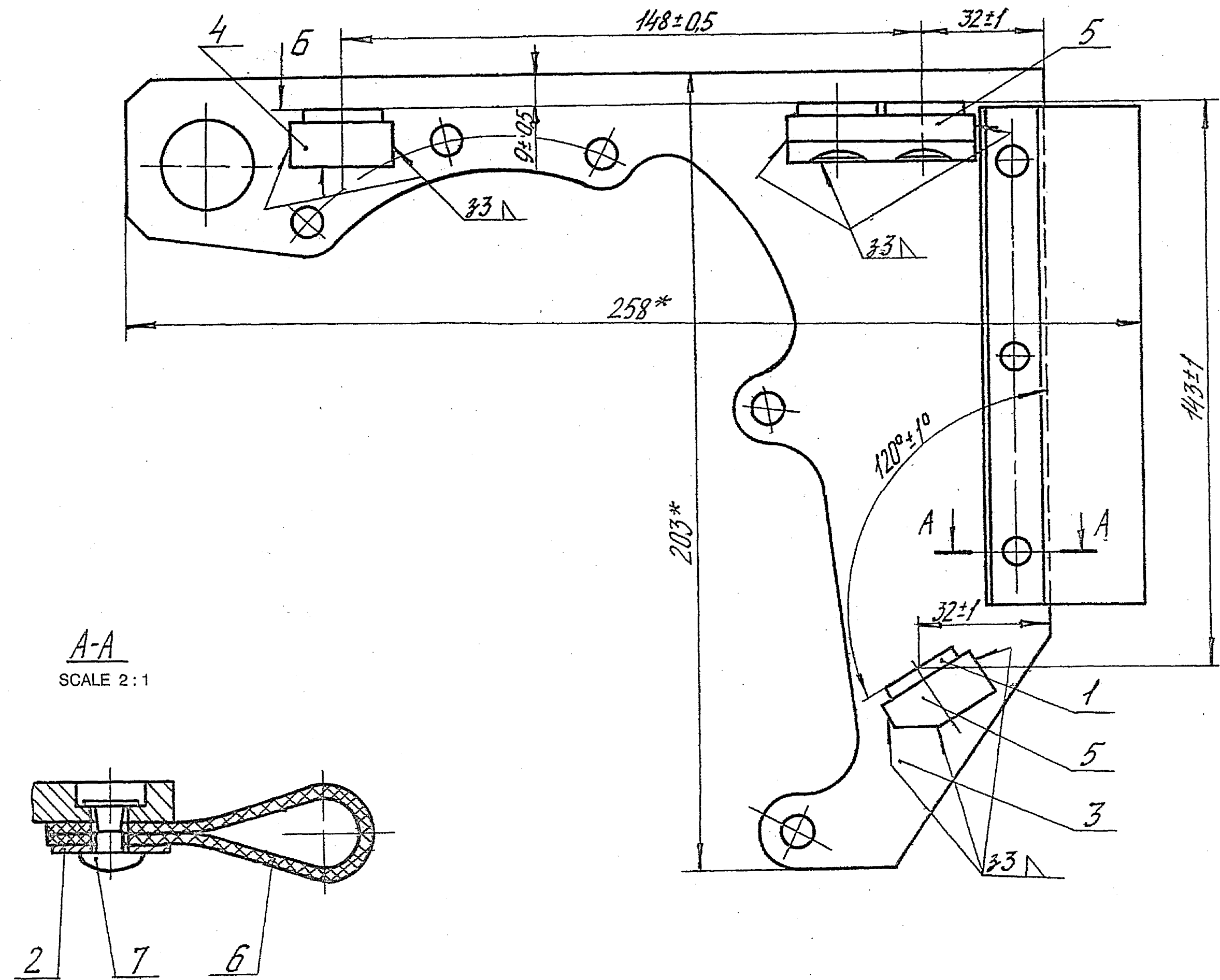
ZONE	ITEM NO	DRAWING NUMBER	D S CAT NUMBER	DESCRIPTION	QTY	REMARKS
		175.45.017cb-1Cb		RIB		
		& ITEM LIST				
	1	175.45.060		NUT	5	
	2	175.45.061-1		COVER PLATE	1	
	3	175.45.062-2		BRACKET	1	
	4	175.45.064-1		BOSS	1	
	5	175.45.079		BOSS	2	
	6	175.45.080		COLLAR	1	
	7	OST 17-600-76		TUBULAR RIVET 3X-25	3	
	7	OST 17-600-81		ASSY RIVET 3CP-25	3	
				OR 3CP-22		

10B	25.10.04	N OF A No. CQA(HV)/T90/45/001			
10A	27.01.2K	N OF A No. CQA(HV)/45/004			
10	24.11.88	AMDT. LIST. No.6 / II BOOK - 7			
ISSUE	DATE	NATURE OF AMENDMENTS	ISSUE	DATE	NATURE OF AMENDMENTS

DRN	Sd/=	CONTROLLERATE OF QUALITY ASSURANCE (HEAVY VEHICLES) AVADI.			
CHD	Sd/=	TITLE : BRACKET			
APPD	Sd/=				
DATE	04 - 03 - 88	SHT. NO. 1 OF 1	D S CAT NUMBER	ITEM LIST FOR 175.45.017cb-1Cb	

DRAWING NUMBER
175.45.017cb-1Cb

SHEET No. 1 OF 1



1. FACES "5" OF NUTS SHOULD BE IN ONE PLANE.
NON-COINCIDENCE IS NOT TO BE MORE THAN 0.5 mm WITHIN OVERALL DIMENSIONS OF THE BRACKET.
2. WHEN SCREWING THE NUT IN THE BOSS APPLY A THIN LAYER OF ZINC WHITE (PREPARED IN COMPLIANCE WITH INSTRUCTIONS OF PROCESS ENGINEERING DEPARTMENT) OR SEALING COMPOUND TY 6-10-1010-80. TO THE NUT OUTER THREAD.
PRESERVATION AND APPLICATION OF THE SEALING COMPOUND IN COMPLIANCE WITH INSTRUCTIONS OF PROCESS ENGINEERING DEPARTMENT.
3. * DIMENSIONS FOR REFERENCE.

15-09-06
 (B. JAYAVELUJ, JTOID)

" COMMON TO T-90 "
 DRG.RE INDIANISED BASED ON RUSSIAN ORIGINAL ISSUE - 9

A-A
SCALE 2:1

F-84
11
SIZE A2

PILOT SAMPLE SHOULD BE APPROVED BY A H S P BEFORE BULK PRODUCTION.

EST. WT. (Kg) 0.277	TO BE STAMPED OR MARKED WHERE INDICATED THUS # (LETTERS)
------------------------	---

ALL SHARP EDGES AND CORNERS TO BE REMOVED UNLESS OTHERWISE STATED MACHINED CORNERS TO HAVE R OUTSIDE R INSIDE EQUIVALENT CHAMFERS ARE PERMISSIBLE.

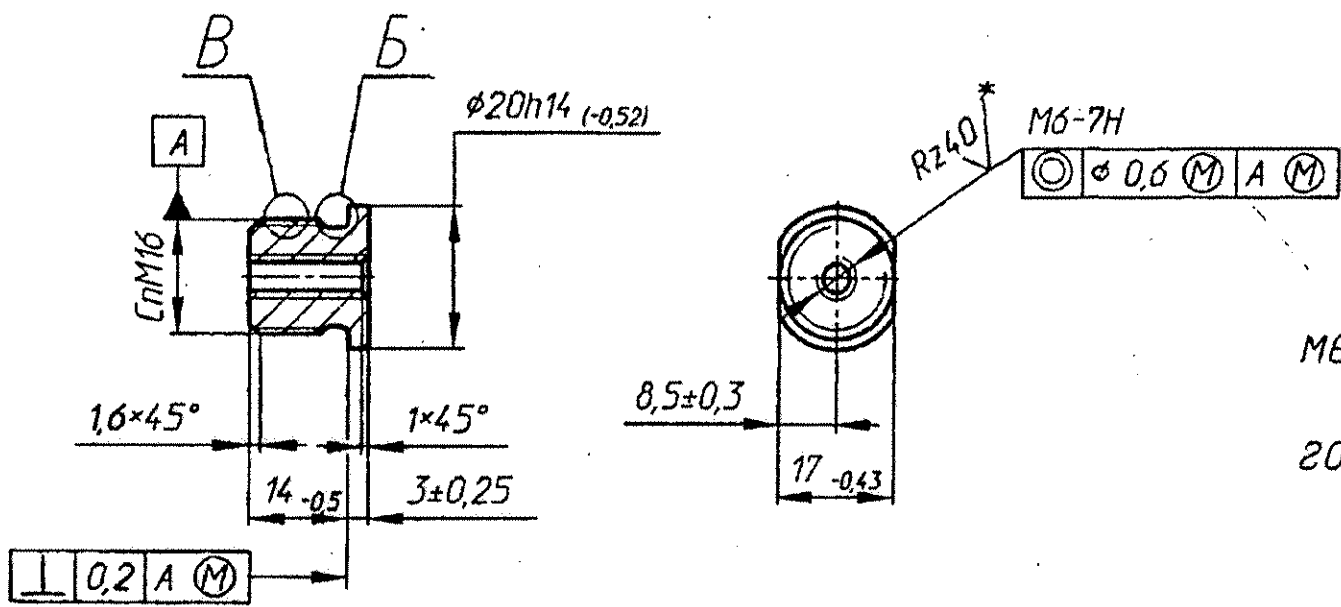
DRN	Sd / =	MATERIAL :-	USED ON :- 175.45ebCb-172.45.060cbCb
CHD	Sd / =		
APPD	Sd / =	CONTROLLERATE OF QUALITY ASSURANCE (HEAVY VEHI AVADI)	
DATE	04 - 03 - 88		
SCALE:- 1 : 1		TITLE :-	BRACKET
DIMENSIONS IN mm			
TOLERANCE ON DIMNS UNLESS OTHERWISE STATED IS : 2102 - 69		D S CAT NUMBER	DRAWING NUMBER 175.45.017cb-
10B	25.10.04 N OF A No.CQA(HV)/T90/45/001		
10A	27.01.2K I/L AMENDED.		
10	24.11.88 I/L AMENDED.		
ISSUE	DATE	NATURE OF AMENDMENTS	

188.45.001cb-3Cb (10B)

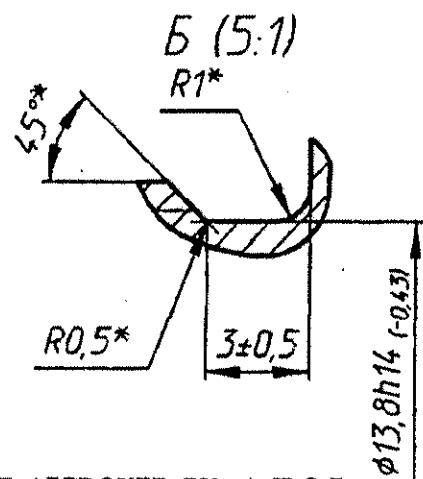
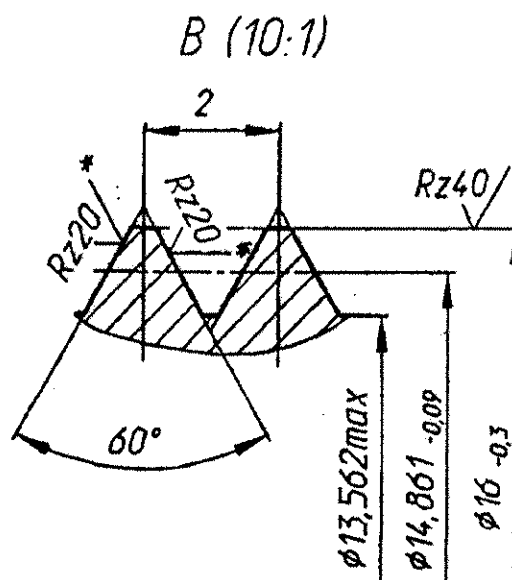
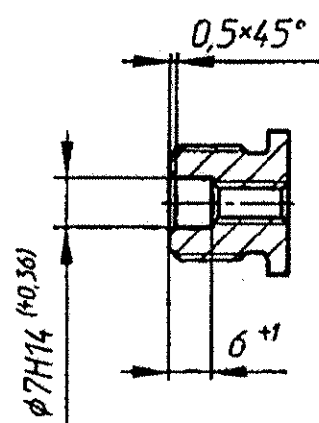
DRAWING NUMBER
175.45.060

SHEET No. 1 OF 1

Rz80/√(√)



Alternate
Вариант



1. 255...302 НВ. Допускается проверять в заготовке.
2. Покрытие Хим. Фос. окс. прм.
3. *Размеры и шероховатость обеспечить инструментом.
4. Допускается изготовление из профиля стального фасонного №2477.
5. Остальные требования по 520.ТУ1.

1. BHN 255 to 302, may be checked in blank .
2. Coating: Chemical phosphating, oxidation and oil finishing.
3. *Dimensions and surface finishing are to be ensured by tool.
4. May be manufactured out of shaped steel profile No. 2477.
5. Other requirements as per 520.TY1.

ALT. MATL: STEEL GR. 708 M40 (EN-19A) TO BS: 970-83 PT.1
 AUTHORITY: CGA (HV) LETTER NO. 091/IFD/IND-V/
 MTPF/OE, DATED: 29-09-2004.

21.3.11

DRG. INDIANISED BASED ON RUSSIAN ORIGINAL ISSUE -14
COMMON TO T-72

356

SUPPLY CODE
U-01-1-2
D 90059

PILOT SAMPLE SHOULD BE APPROVED BY A H S P BEFORE BULK PRODUCTION.

EST. WT. (Kg) 0.0055 TO BE STAMPED OR MARKED WHERE INDICATED THUS # (LETTERS)

ALL SHARP EDGES AND CORNERS TO BE REMOVED UNLESS OTHERWISE STATED MACHINED CORNERS TO HAVE R OUTSIDE R INSIDE EQUIVALENT CHAMFERS ARE PERMISSIBLE.

DRN	V. @	MATERIAL:-	USED ON:-
CHD	R. Gangan	Steel 38XC	175.45.017cb-1Cb
APPD	Chanchal	GOST 4543-71	175.45.019cbCb
DATE	18.8.04	CONTROLLERATE OF QUALITY ASSURANCE (HEAVY VEHICLES)	
SCALE:-	1:1	AVADI	
DIMENSIONS IN mm		TITLE:-	
TOLERANCE ON DIMNS UNLESS OTHERWISE STATED IS: 2102-69		NUT	
ALL THREADS TO CONFORM TO		D S CAT NUMBER	DRAWING NUMBER
ISSUE	DATE		175.45.060

F-80
33

SIZE A3

DRAWING RE INDIANISED BASED ON RUSSIAN ORIGINAL ISSUE-4.

Approved
 (B. JAYA VELU, JTOID)
 14-07-06

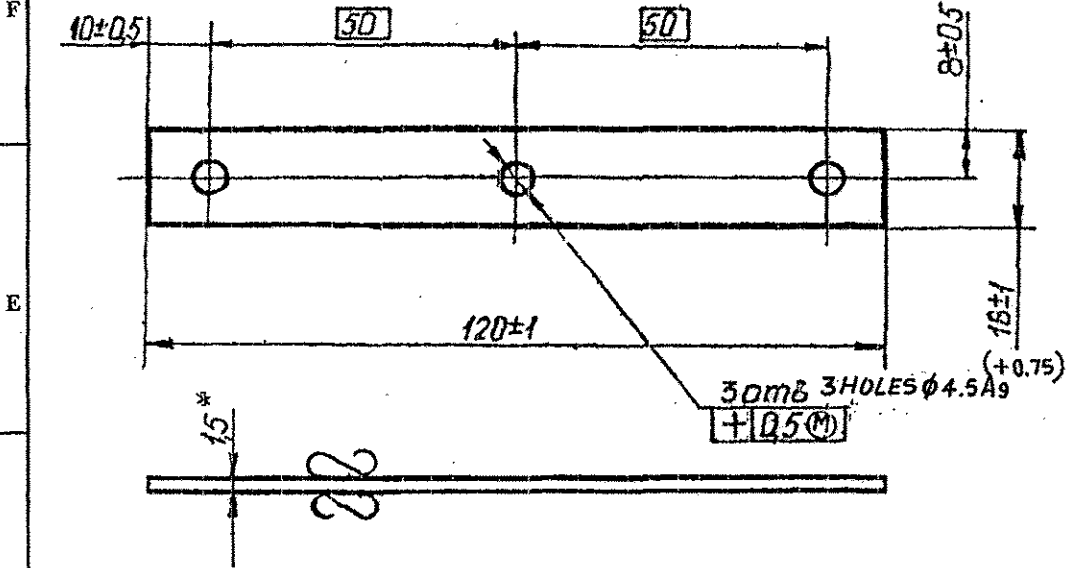
COMMON TO T 90

F-85

DRAWING NUMBER
175.45.061-1 /

SHEET No 1 OF 1

UNLESS OTHERWISE SPECIFIED $R_{2.320}$ ✓(✓)



1. MAY BE MANUFACTURED FROM SHEET AMUM OR AD1M GOST 21631 - 76.
2. * DIMENSION FOR REFERENCE.

Ⓐ ALT. MATL: GRADE 54300 TO IS: 737-86

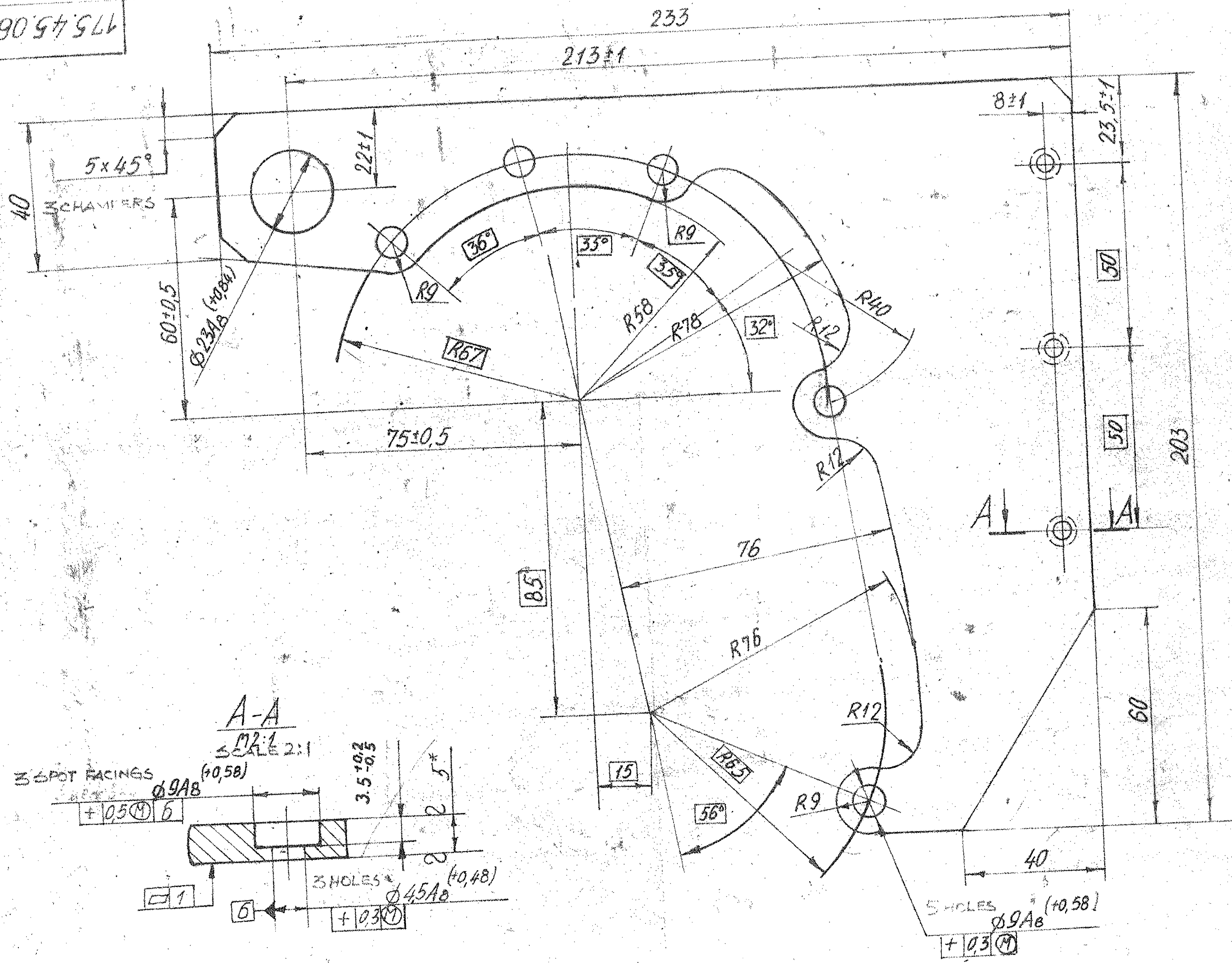
PILOT SAMPLE SHOULD BE APPROVED BY A H S P BEFORE BULK PRODUCTION

		EST WT (Kg) 0.004 Kg	TO BE STAMPED OR MARKED WHERE INDICATED THUS # (LETTERS)
		ALL SHARP EDGES AND CORNERS TO BE REMOVED UNLESS OTHERWISE STATED MACHINED CORNERS TO HAVE R OUT SIDE R INSIDE EQUIVALENT CHAMFERS ARE PERMISSIBLE	
		MATERIAL SHEET AMГ 6 Б M-1.5 GOST 21631-76.	USED ON 175.45.017cb-1 175.45.018cb-1 175.45.019cb-1
4A	7.7.06	AUTHY L1 No 80001/CQAIHV/GEN DT 15.10.05	
ISSUE	DATE	NATURE OF AMENDMENTS	
DRN	Sd/=	SCALE 1 : 1	CONTROLLERATE OF QUALITY ASSURANCE (HEAVY VEHICLES) AVADI
CHD	Sd/=	DIMENSIONS IN mm	
APPD	Sd/=	TOLERANCE ON DIMENSIONS UNLESS OTHERWISE STATED IS 2102 69	TITLE COVER PLATE
DATE	16.11.94	ALL THREADS TO CONFORM TO	D S CAT NUMBER
			DRAWING NUMBER 175.45.061-1
SIZE A4			

175.45.062-2

Rz 650 (▽)

ALT. MATL : IS: 737-74 Gr. 54300
 AUTH : C&A (HV) LETTER No. 091/IFD/INV-V/MTPE/OE
 DT. 17-03-2005



ALL SHARP EDGES AND CORNERS TO BE REMOVED UNLESS OTHERWISE STATED
 MACHINED CORNERS TO HAVE R OUTSIDE R INSIDE EQUIVALENT CHAMFERS
 ARE PERMISSIBLE

- MAY BE MANUFACTURED FROM SHEET AM Γ 5, AM Γ 6M AND AM Γ 6YM
 GOST 21631-76.
- DRAFTS, SHRINKAGE OF EDGES, STAMPING MARKS AND TRACES OF STROKES
 ARE ALLOWED.
- DEVIATION OF THE COMPONENT CONTOUR FROM TEMPLAT MADE TO SUIT
 NOMINAL DIMENSIONS SHOULD NOT EXCEED 1.5mm.
- * DIMENSION FOR REFERENCE.

MASTER COPY

F 85

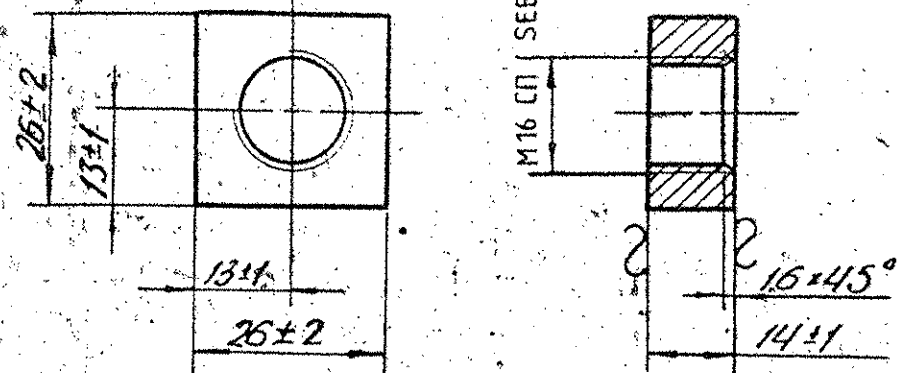
PILOT SAMPLE SHOULD BE APPROVED BY A H S P BEFORE BULK PRODUCTION

EST. MASS.	0.2 kg	TO BE STAMPED OR MARKED WHERE INDICATED THUS *	LETTERS)
ALL SHARP EDGES AND CORNERS TO BE REMOVED UNLESS OTHERWISE STATED MACHINED CORNERS TO HAVE R OUTSIDE R INSIDE EQUIVALENT CHAMFERS ARE PERMISSIBLE.			
ISSUE	DATE	NATURE OF AMENDMENTS	USED ON:-
URN		SCALE - 1:1	SHEET AM Γ 6 B M-5 GOST 21631-76
CPD		DIMENSIONS IN mm	175.45.017 C8-1
TLD		TOLERANCE ON DRWS UNLESS OTHERWISE STATED.	CONTROLLERATE OF INSPECTION (HEAVY VEHICLES) AVADI
APPD			TITLE: BRACKET
DATE	01/11/18	ALL THREADS CONFORM TO	D S CAT NUMBER
			DRAWING NUMBER 175.45.062-2

ORIGINAL DATE : 1-9-86
 DRG. INDIANISED BASED ON RUSSIAN ORIGINAL ISSUE 5.
 DRG. REDRAWN AND EXPLANATORY NOTE ADDED ON 20.02.92.

DRAWING NUMBER
 175 45 064-1

Rz 6.30 (▽)



EXPLANATORY NOTE :-

3. REFERENCE MATERIAL QUOTED :- PLATE AMГ 6 GOST 17232-79.
 ALUMINIUM ALLOY PLATE TO GRADE AMГ 6 GOST 17232-79 AND
 MANUFACTURED IN ACCORDANCE WITH GOST 4784-71.

a) CHEMICAL COMPOSITION :- AS PER GRADE AMГ 6 TO GOST 4784-71.

ALLOY ELEMENTS %					IMPURITIES % MAXIMUM				OTHER IMPURITIES EACH	TOTAL
Al	Mg	Mn	Ti	Be	Fe	Si	Cu	Zr		
BASE CONSTITUENT	5.8-6.8	0.5-0.8	0.02-0.10	0.0002-0.005	0.4	0.4	0.1	0.2	0.05	0.1

b) MECHANICAL PROPERTIES :- AS PER GRADE AMГ 6 TO GOST 17232-79.

TENSILE STRENGTH Kgf/mm ²	YIELD POINT Kgf/mm ²	ELONGATION
MINIMUM		
310	15.0	11.0

- DRAFTS, SHRINKAGE OF EDGES AND ROUNDING OFF SHARP ANGLES TO R. 3 mm. ARE ALLOWED.
- THREAD M16 (H) DIFFERS FROM M16-5H6H ONLY IN MINOR DIAMETER WHICH SHOULD BE EQUAL TO $\phi 14.1 + 0.3$

ALT. MATL: ALUMINIUM GR. 54300 TO IS: 737-86
 AUTHORITY: CQA(HV) LETTER NO. 091/IFD/IND-V/MTPF/OE
 DATED 24.03.2005

2.3.11

MASTER COPY

PILOT SAMPLE SHOULD BE APPROVED BY A H S P BEFORE BULK PRODUCTION


EST. WT. 0.0077 (7) TO BE STAMPED OR MARKED WHERE INDICATED THUS # (LETTERS)

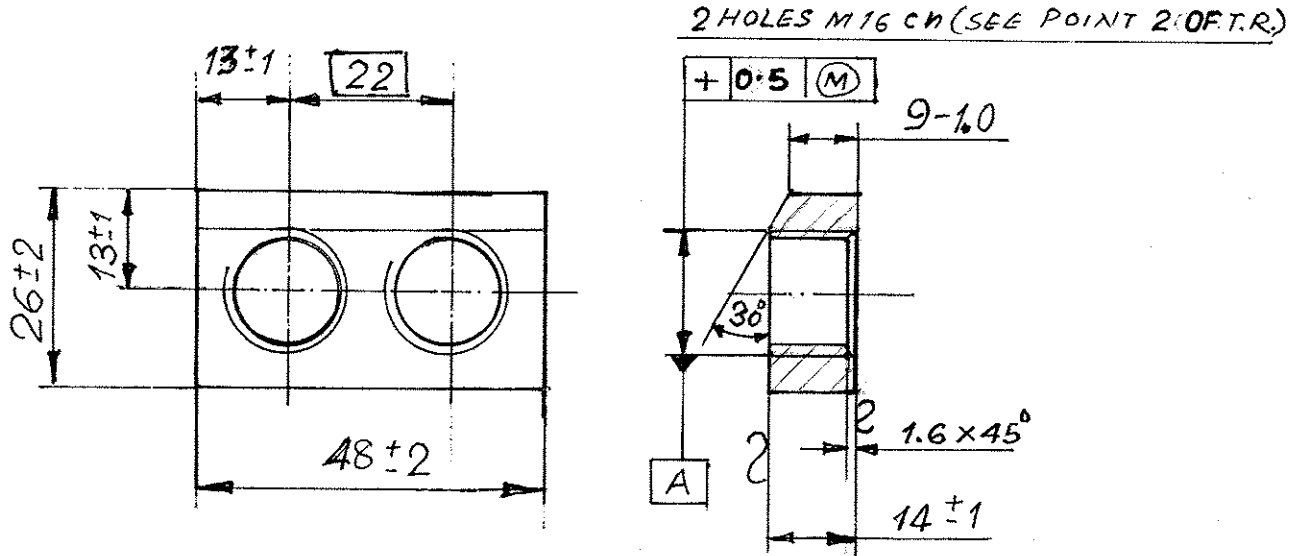
ALL SHARP EDGES AND CORNERS TO BE REMOVED UNLESS OTHERWISE STATED MACHINED CORNERS TO HAVE R OUT SIDE R INSIDE EQUIVALENT CHAMFERS ARE PERMISSIBLE.

DRN	<i>S. Sharma</i>	MATERIAL:- PLATE - AMTY 347 61 - AMГ 6, GOST 17232-79 (6)	USED ON 175 45 017 Cb-1 175 45 019 Cb
CHD	<i>S. Sharma</i>	CONTROLLERATE OF QUALITY ASSURANCE (HEAVY VEHICLES) AVADI.	
TCD	<i>T. Sharma</i>		
APPO	<i>V. Ramana</i>	TITLE BOSS	
DATE	20-02-92		
SCALE:-	1:1	D S CAT NUMBER DRAWING NUMBER 175 45 064-1	
DIMENSIONS IN mm			
TOLERANCE ON DIMNS UNLESS OTHERWISE STATED IS : 2102-69.			
ALL THREADS TO CONFORM TO			
ISSUE	67	DATE	21-4-88
NATURE OF AMENDMENTS			
AMDT. LIST No. 6 / II, BOOK - 7.			

F 85
 SIZE A3


This drg. has prepared based on AHSP drg.

Rx 630
 (▽)



1. DRAFTS, SHRINKAGE OF EDGES AND ROUNDING OFF SHARP ANGLES TO R 3MM ARE ALLOWED.

2. THREAD M16 CH DIFFERS FROM M16-5HG ONLY IN MINOR DIAMETER, WHICH SHOULD BE EQUAL TO $\phi 14.1 \pm 0.3$.

PKS
 22 FEB 2005

 MAMOC

ALT. MATL: IS: 737-74 GT. 54300
 AUTH: CQA(HV) LETTER NO.
 091/IFD/IND-V/MTPF/OE
 DT. 17-03-2005.

संख्या NO. OFF.	विवरण DESCRIPTION	पुर्जा क्र. PART NO.	पदार्थ MATERIAL	मानक STANDARD	परिमाण DIMENSIONS	अभ्यांकित REMARKS	MASS
	PLATE AM #6						0.020 Kg
सामान्य सहिष्णुता GENERAL TOLERANCE							
रेखिक परिमाण LINEAR DIMENSION							
0-6 ± 0.1							
6-30 ± 0.2							
30-120 ± 0.3							
120-315 ± 0.5							
315-1000 ± 0.8							
1000-2000 ± 1.2							
कोणिक परिमाण ANGULAR DIMENSION							
1-10 ± 1°							
10-50 ± 30'							
50-100 ± 20'							
> 100 ± 10'							
मापांक 'म्य. एम.' म VALUE IN 'um'							
~ > 25							
∅ 8-25							
∅ 1.8-8							
∅ 0.025-1.8							
∅ < 0.025							
मूलमाप व अन्वायोजन NOMINAL SIZE & FIT	विचलन DEVIATION	संख्या NO. OFF.	संबंधित पुर्जाका आरेखण क्र. DRG. NO. OF ASSOCIATED PART	सूचक INDEX	संशोधन ALTERATION	1996	दिनांक DATE
							नाम NAME
							21.5. RAUT
							22.5. MCM
							23.5.
BOSS INTERMEDIATE GEAR BOX. CODE-45. T-72/T-90						मापमान SCALE	आरेखित DRAWN
						1:1	जांचा CHECKED
							अनुमोदित APPROVED
						द्वारा बदला REPLACED BY	
						हेतु बदला REPLACED FOR	
						आरेखण क्र. DRAWING NO.	
						VMT	175-45-079.
मशीनी औजार आविस्वरूप फैक्टरी, अम्बरनाथ MACHINE TOOL PROTOTYPE FACTORY, AMBARNATH						कार्यालय OFFICE	

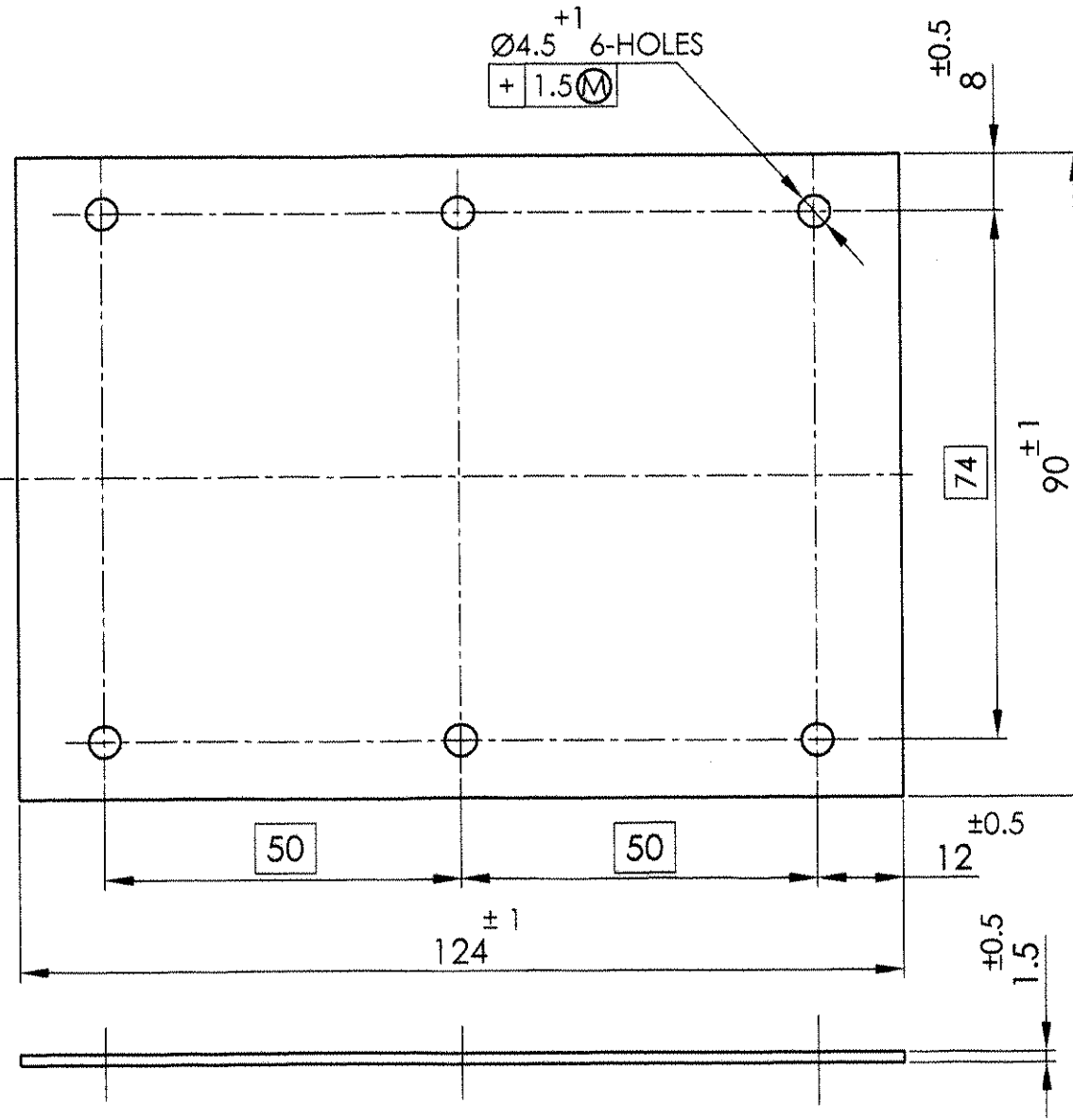
TRACED FROM ORIGINAL PRINT

5 prints to i/c. TPL with a note.

ENTRY NO. 0102

PHYSICAL & MECHANICAL PROPERTIES OF RUBBER

DESCRIPTION	RUBBER - 1847 TY 005 216 - 75 (REF.TY 005 216 - 99)	
GRADE OF RUBBER	1847	
TYPE OF RAW RUBBER	HK	
MODE OF VULCANISATION AND THERMOSTATting OF (T) STANDARD SAMPLE	TEMP °C	151 ^{±3}
	TIME MIN.	15 ^{±1.0}
RELATIVE TENSILE STRENGTH MPa (kgf/cm ²), NOT LESS THAN	15.7 (160)	
RELATIVE ELONGATION AT RUPTURE %, NOT LESS THAN	600	
RELATIVE RESIDUAL DEFORMATION AFTER BREAKING %, NOT MORE THAN	32	
HARDNESS UNIT IN SHORE A, WITHIN THE LIMITS	35 - 50	
TEMPERATURE LIMIT OF FRAGILITY °C, NOT MORE THAN	Minus 45	
DENSITY Kg/M. ³ (LIMIT DEVIATION)	1.05 ^{±0.05}	
STORAGE LIFE OF RUBBER STOCK, MONTHS	4	
TECHNOLOGICAL PROPERTIES OF RUBBER STOCK	BY MOLDING BY CALENDERING	



1. TY 005216 - 75 AND FROM RUBBER 1847 TY 38 -005 - 838 - 70, 2mm THICK
2. HOLES MAY BE PUNCHED TO SUIT THE PLACE DURING ASSEMBLY
3. REQUIREMENTS FOR THE FINISHED COMPONENT - IN COMPLIANCE WITH TY 005216 - 75.
4. PILOT SAMPLE SHOULD BE APPROVED BEFORE BULK SUPPLY



USED ON: 175-45-017 CD-1
175-45-019 CD

This drg. has been prepared based on AHS drg.

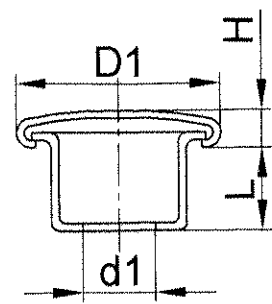
इन आरेखणों तथा इसके साथ की सम्पूर्ण सामग्री का स्वत्वाधिकार भारत सरकार रक्षा मंत्रालय की भारतीय आयुध निर्माणियों के पास है। भारतीय आयुध निर्माणियों के महानिदेशक की लिखित अनुमति के बिना इनकी नकल या किसी भी रूप में इनके उद्धरण या इनमें समाहित सूचना किसी अनधिकृत व्यक्ति को उपलब्ध नहीं कराई जानी चाहिए।

THE COPYRIGHT OF THESE DRAWINGS AND ALL ATTACHMENTS THERE TO BELONGS TO THE INDIAN ORDNANCE FACTORIES, MINISTRY OF DEFENCE, GOVT. OF INDIA THEY SHOULD NOT BE COPIED, REPRODUCED IN ANY WAY OR THE INFORMATION CONTAINED THEREIN MADE AVAILABLE TO UNAUTHORISED PERSONS WITHOUT THE WRITTEN PERMISSION OF THE DIRECTOR OF ORDNANCE FACTORIES.

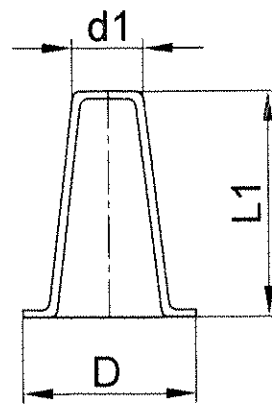
मूलमाप व अन्वयोजन
NOMINAL SIZE & FIT

विचलन
DEVIATION

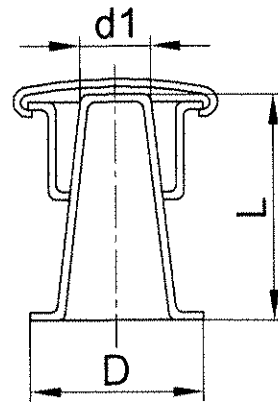
GASKET		PLATE 25.4311-1.5 RUBBER 1847	TY 005216 - 75	WT = 0.020 Kg		
संख्या NO.OFF	विवरण DESCRIPTION	पुर्जा क. PART NO	पदार्थ MATERIAL	मानक STANDARD	परिमाण DIMENSIONS	अभ्यक्ति REMARKS
सामान्य सहिष्णुता GENERAL TOLERANCE		* Added as per part				
रेखिक परिमाण LINEAR DIMENSION						
0-6		±0.1				
6-30		±0.2				
30-120		±0.3				
120-315		±0.5				
315-1000		±0.8				
1000-2000		±1.2				
कोणिक परिमाण ANGULAR DIMENSION	संख्या NO OFF	संबंधित पुर्जा का आरेखण क्र. DRG NO. OF ASSOCIATED PART	सूचक INDEX	संशोधन ALTERATION	2006	दिनांक DATE
1-10	±1'				06.02.06	Selvi
10-50	±30'				11.11.06	
50-100	±20'				13.11.06	
>100	±10'					
मापक 'म्यू एम' में VALUE IN "um"						
-	>25					
▽	8-25					
▽▽	1.6-8					
▽▽▽	0.025-1.6					
▽▽▽▽	<0.025					
GASKET (COLLAR) TRANSMISSION GEAR UNIT CODE- 45 / T-72 & T-90				मापमान SCALE	आरेखित DRAWN	06.02.06
				1:1	जाँचा CHECKED	11.11.06
					अनुमोदित APPROVED	13.11.06
				द्वारा बदला REPLACED BY	हेतु बदला REPLACED FOR	
मशीनी औजार आदिरूप फैक्टरी, अम्बरनाथ MACHINE TOOL PROTOTYPE FACTORY, AMBERNATH				कार्यालय OFFICE	आरेखण क्र. DRAWING NO. 175-45-080	
				DO		



ASSEMBLY RIVET TYPE 3 C

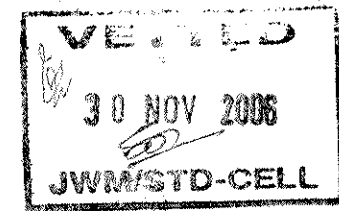


HOLLOW RIVET TYPE 3 n-25



ASSEMBLY RIVET TYPE 3 Cn

CHEMICAL COMPOSITION (%)		MECHANICAL PROPERTIES	
COLD-ROLLED STEEL BAND MADE OF LOW-CARBON STEEL GRADE 0.8-1.0		DESCRIPTION	STEEL 08 GOST 1050-74
ELEMENT		HEAT TREAT.	NORMALISING
STEEL 08 GOST 1050-74		TENSILE STRENGTH	33 Kg/mm ² MIN
C	0.05 - 0.12	YIELD POINT	20 Kg/mm ² MIN
Si	0.17 - 0.37	ELONGATION	33 % MIN
Mn	0.35 - 0.65	HARDNESS	131 BHN
Cr	0.10 MAX	REDUCTION IN AREA	60 % MIN
S	0.040 MAX		
P	0.035 MAX		



DESIGNATION	CONVENTIONAL DESIGNATION OF THE TYPE OF ARTICLE	D1	d1	H	L	CONVENTIONAL DESIGNATION OF THE TYPE OF ARTICLE	D	d1	L1	TYPE OF COATING PLATING
3CП-25	3 C -25	^{+0.20} 7.8	^{+0.16} 3.25	^{+0.2} 1.0	^{+0.2} 4.0	3n-25	^{-0.20} 7.0	^{-0.16} 3.15	^{-0.20} 10.0	NICKEL

1. SURFACE OF RIVETS AND NAILS SHOULD BE CLEAN WITHOUT ANY CRACKS, CAVITIES, BURRS SPALLING OF METAL AND OTHER MECHANICAL DAMAGES. CORROSION CENTRES ARE NOT ALLOWED ON THE SURFACES OF RIVET AND NAIL.
2. PATTERN OF THE CAP OF RIVETS AND NAILS OBTAINED BY EMBASSING, ENGRAVING OR CUTTING SHOULD BE CLEAR AND PROJECTING.
3. INCOMPLETING PRESSING AT THE VERTEX OF HALF-ROUND HEADS OF RIVET AND NAIL IN THE FORM OF AREA WITH A DIAMETER OF MAXIMUM 0.3 OF HEAD DIAMETER.
4. FLASH FORMED DURING HEADING AND INCOMPLETELY REMOVED WHILE FINISHING, IF THE DIMENSIONS OF HEAD DO NOT EXCEED THE TOLERANCE LIMIT.
5. OVALITY OF HEADS, CAP OR COLLAR OF RIVETS AND NAILS SHOULD NOT EXCEED THE TOLERANCE ON THEIR DIAMETER.
6. ASSYMMETRY WITH RESPECT TO THE AXIS OF SYMMETRY OF GROOVE OF SECTIONAL RIVET SHOULD NOT EXCEED 0.3 mm.
7. FLAIRING OF THE EDGES OF COVER OF RIVET AND NAIL SHOULD BE UNIFORM WITHOUT ANY CARRYGATING AND FOLD PARTS OF ASSEMBLY NAIL SHOULD BE FIRMLY JOINED.
8. PILOT SAMPLE SHOULD BE APPROVED BY A H S P BEFORE BULK PRODUCTION.

** MATERIAL: COLD-ROLLED STEEL BAND MADE OF LOW-CARBON STEEL GRADE 08-1.0 TO GOST 1050-74

ALTERNATE MATERIAL: COMMERCIAL QUALITY CAN BE USED WHICH IS SUITABLE FOR END USE.

AUTHORITY: CQA(HV), LETTER No. 98704/04/ID-CO-ORD/ALT COM.

DATED: 03-05-2005

USED ON:- 175-45-017 CD-1
175-45-018 CD-1
175-45-019 CD

This sketch along with all details is an abstract based on Russian Specification OST-17-600-81

COATING NICKLE COATING 6 μ THICKNESS LUSTROUS. (or)
NICKLE COATING 6 μ THICKNESS SEMI-LUSTROUS.

इन आरेखणों तथा इसके साथ की सम्पूर्ण सामग्री का स्वत्व अधिकार भारत सरकार रक्षा मंत्रालय की भारतीय आयुध निर्माणियों के पास है। भारतीय आयुध निर्माणियों के महानिदेशक की लिखित अनुमति के बिना इनकी नकल या किसी भी रूप में इनके उद्धरण या इनमें समाहित सूचना किसी अनधिकृत व्यक्ति को उपलब्ध नहीं कराई जानी चाहिए।

THE COPYRIGHT OF THESE DRAWINGS AND ALL ATTACHMENTS THERE TO BELONGS TO THE INDIAN ORDNANCE FACTORIES, MINISTRY OF DEFENCE, GOVT. OF INDIA THEY SHOULD NOT BE COPIED, REPRODUCED IN ANY WAY OR THE INFORMATION CONTAINED THEREIN MADE AVAILABLE TO UNAUTHORISED PERSONS WITHOUT THE WRITTEN PERMISSION OF THE DIRECTOR OF ORDNANCE FACTORIES.

मूलमाप व अन्वयोजन
NOMINAL SIZE & FIT

विचलन
DEVIATION

संख्या NO. OFF	विवरण DESCRIPTION	पुर्जा क्र. PART NO.	पदार्थ MATERIAL	मानक STANDARD	परिमाप DIMENSIONS	अभ्यक्ति REMARKS
	सामान्य सहिष्णुता GENERAL TOLERANCE			@	Drg. updated	25/11/06
	रेखिक परिमाप LINEAR DIMENSION					
	0-6					
	6-30					
	30-120					
	120-315					
	315-1000					
	1000-2000					
	कोणिक परिमाप ANGULAR DIMENSION	संख्या NO. OFF	संबंधित पुर्जा का आरेखण क्र. DRG. NO. OF ASSOCIATED PART	सूचक INDEX	संशोधन ALTERATION	2006
	1-10					दिनांक DATE
	10-50					नाम NAME
	50-100					
	> 100					
	मापांक 'म्यू एम' में VALUE IN 'μm'					
	-					
	~					
	∇					
	▽					
	▽▽					
	▽▽▽					
ASSEMBLY RIVET TYPE 3Cn-25 TRANSMISSION GEAR UNIT ASSY. CODE-45 / T-72 & T-90						मापमान SCALE आरेखित DRAWN 28.11 जाँचा CHECKED अनुमोदित APPROVED 01.12.06 11/12/06
मशीनी औजार आदिरूप फैक्टरी, अम्बरनाथ MACHINE TOOL PROTOTYPE FACTORY, AMBERNATH						कार्यालय OFFICE DO
द्वारा बदला REPLACED BY हेतु बदला REPLACED FOR आरेखण क्र. DRAWING NO. MPF/IGB/OST-17-600						VML RS