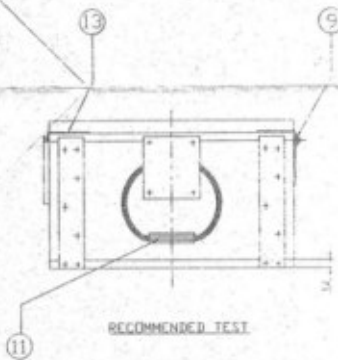


V 929 ASI

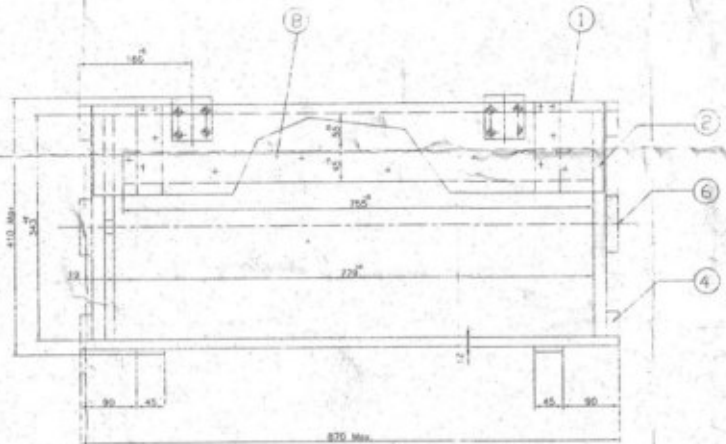
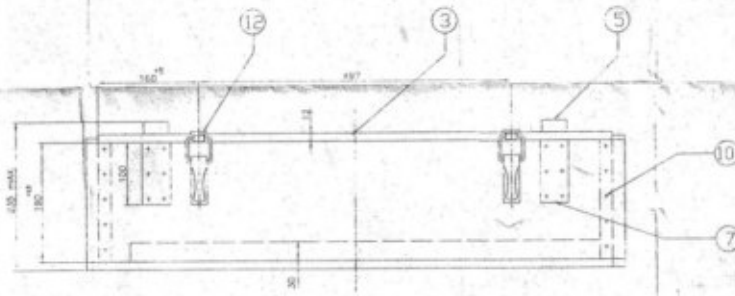
ENR. CONVENTIONS CONFORM TO IS: SPECIFICATIONS  
DIMENSIONS ARE IN mm.

DC-37261-A

GEN. TOL. MEDIUM CLASS TO IS-2102.



RECOMMENDED TEST



NOTES :-

- 1) ALL JOINTS TO BE DONE BY SUITABLE Nos. OF M.S. NAILS.
- 2) ALL TRAILS SHOULD BE TIPPED PLATED OR ANY RUST-PROOF COATED.
- 3) ALL NAILS CLIPPED FROM INSIDE.
- 4) HINGES & LATCHES TO BE PLATED OR ANY RUSTPROOF COATED.
- 5) THE BOX TO BE PAINTED WITH COLOUR OLIVE GREEN (IS-22 ORD E-19) AS PER SPECN. IA 948 (5k).

REFERENCE DRAWING NO. 118405-3 CAT. No. 11-711, 9160

MATERIAL :-

- 1) PLY WOOD- GR. TYPE BWR IN ACC WITH IS 1455 OR BWR TYPE AA 30 SPEC. IS 303-1999.
- 2) TIMBER- IND/ML/BS3 (I) PROV.
- 3) METAL FITMENTS (LATCH UNIT & HINGES) STEEL STRIP AS PER SPEC. IS-513 'O' GR.

RECOMMENDED TEST

(BASED ON SPECN. No. JSG-0102)

- 1) FLATE DROP TEST FROM THE HEIGHT OF 1.2m SHALL BE CARRIED OUT.
- 2) BOUNCE TEST WITH RPM - 180 SHALL BE CARRIED OUT.
- 3) VIBRATION TEST WITH 12mm AMPLITUDE AND 5 TO 10 Hz FREQUENCY SHALL BE CARRIED OUT.

LIST OF COMPONENTS				
S.NO.	DESCRIPTION	DESIGNER'S REF. No.	PART No.	QTY.
1	FRONT & BACK PLY	CGA(A)/MM/3506 BMT1	ISV 2236	2
2	SIDE PLY	CGA(A)/MM/3506 BMT2	ISV 2230	2
3	TOP & SIDE PLY	CGA(A)/MM/3506 BMT3	ISV 2240	2
4	BATTEN - 1	CGA(A)/MM/3506 BMT4	ISV 2251	4
5	BATTEN - 2	CGA(A)/MM/3506 BMT5	ISV 2242	4
6	BATTEN - 3	CGA(A)/MM/3506 BMT6	ISV 2243	2
7	BATTEN - 4	CGA(A)/MM/3506 BMT7	ISV 2244	2
8	BATTEN - 5	CGA(A)/MM/3506 BMT8	ISV 2245	2
9	HINGE ASSY	CGA(A)/MM/3506	ISV 2411 24	2
10	NAIL 32mm LONG			120
11	HANDLE WITH SLEEVE	CGA(A)/MM/3506	ISV 224 12	2
12	LATCH UNIT	CGA(A)/MM/3506	ISV 206 24	2
13	TONGUE	CGA(A)/MM/3510	ISV 2240	2

DESIGNER	CHECKED	APPROVED	DATE	SCALE	NO.
DATE	SCALE	NO.	NO.	NO.	NO.
DATE	SCALE	NO.	NO.	NO.	NO.

AMMUNITION CONTAINER BOX C 55A ( PLYWOOD )  
FOR AMN. CONTAINER ASSY. 173A

MANUFACTURED BY  
CGA / MM / 3506  
ISV 626 A

APPROVED BY  
CGA(A) KIRKEE

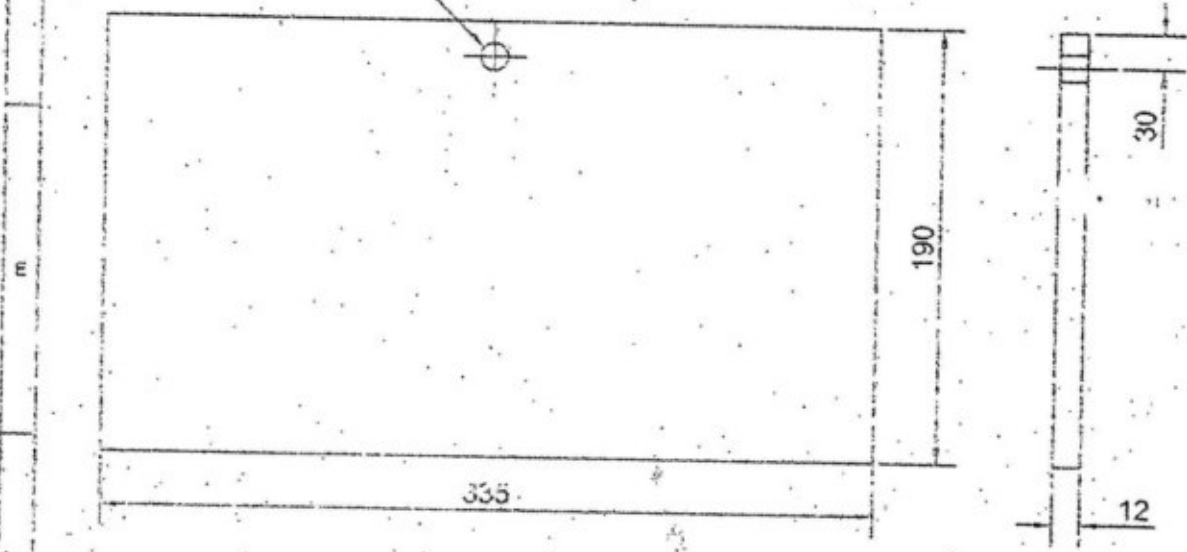
ISV 2233

DRG. CONVENTIONS CONFORM TO IS: SPECIFICATIONS.

PART No. DIMENSIONS ARE IN mm.

DC:37283-A.

GEN. TOLERANCE MEDIUM CLASS TO SPEC. IS:2102-1969.



MATERIAL

POLYWOOD Gr. I TYPE BWR IN ACC WITH B.S. 1455 OR BWR TYPE A-A TO SPEC. IS : 303-1989

R.No	DATE	AUTHORITY	REVISION	ZONE	AHSP	D.O.
	30-06-2011	DC 37283-A	DRG. SEALED (PROV.)			

DRG. SEALED:- 30-06-2011 (PROV.)			
DRN. <i>R.R. Sharma</i>	CHD. <i>M. Jadhav</i>	TRD.	COMP
C.D'MAN	O/C D.O.	SCALE:- 1:3	ASSY. DRG. ISV 557 GA
APPD. <i>[Signature]</i>	FOR CQA(A)	EST. MASS.	
		Gauge Schd. DATE:- 01-06-2011	

MATL:- AS ABOVE	DESIGNER'S REF. CQA(A) / AMN / 3504 DET. 2
PROTECTIVE FINISH:-	PART No. ISV 2233
<b>BOARD WITHDRAWAL</b>	D.S. CAT No. NOT TO BE ALLOTTED.
	AHSP:- CQA(A) KIRKEE

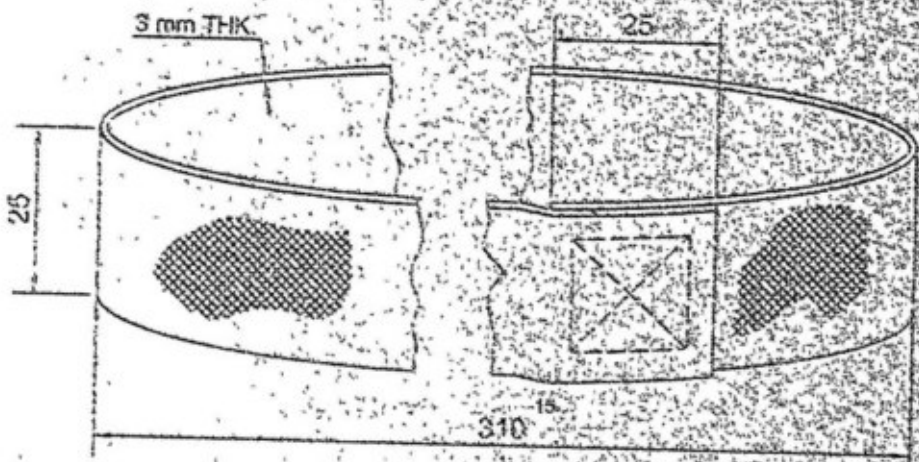
ISV 2232

DRG. CONVENTIONS CONFORM TO ISI SPECIFICATIONS.

DIMENSIONS ARE IN mm.

DC.37283-A.

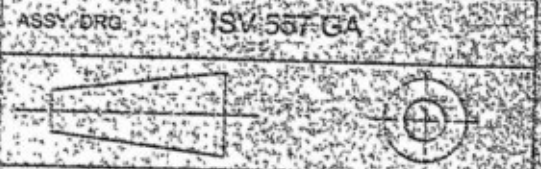
GENL. TOLERANCE MEDIUM CLASS TO SPEC. IS:2102-1989



**MATERIAL:**  
WEBBING COTTON MOKUD PROOF DYED TO ISG-220 OF IS-5-1978 TO SPEC. JSS-1-69-2007

	30-06-2011	DC.37283-A	DRG. SEALED, ↑ PROV.				
R.No.	DATE	AUTHORITY	REVISION	ZONE	AHSP	D.O.	SIG.
DRG. SEALED-	30-06-2011	↑ PROV.					

DRN. <i>P. P. Sharma</i>	CHD. <i>M. S. Jadhav</i>	TRD.	COMP.
C D'MAN	○ I/C D.O.	SCALE:-	EST. MASS:-
APPD. <i>[Signature]</i>	FOR CQM(AT)	GAUGE SCHD:-	DATE: 02-06-2011



MATL:- AS ABOVE  
PROTECTIVE FINISH:-

DESIGNER'S REF.  
CQA(A) / AMN / 3504 DET

**BAND WITHDRAWAL**

PART No. ISV 2232  
D.S. CAT. No. NOT TO BE ALLOTTED  
AHSP CQA(A) KIRKEE

26

4	3	2	1
ISV 2234 <small>PART No</small>		DRG. CONVENTIONS CONFORM TO IS: SPECIFICATIONS. DIMENSIONS ARE IN mm.	
DC.37283-A.		GEN. TOLERANCE MEDIUM CLASS TO SPEC: IS:2102-1969.	
<b>MATERIAL :</b> MILL BOARD JSS : 9310-01-1994 REV. No. 1 DC ( 1 )-3279 / ME DT. 21-02-1995			
11-3731 11/3			
30-06-2011		DC 37283-A.	
DRG SEALED (PROV)			
R.No.	DATE	AUTHORITY	REVISION
			ZONE
			AHSP
			D.O
			SIG.
DRG. SEALED:- 30-06-2011 (PROV.)			
DRN. <i>P.C. Phisaw</i>	C. <i>K. Gudhar</i>	TRD	COMP.
ASSY. DRG.		ISV 557 GA	
C.D'MAN	<i>[Signature]</i>	SCALE:- 1:4	
APPD.	<i>[Signature]</i>	EST MASS:-	
	FOR CQA(A)	GAUGE SCHD:-	
		DATE:- 02-06-2011	
MATL:- AS ABOVE		DESIGNER'S REF	
PROTECTIVE FINISH:-		CQA(A) / AMN / 3504 DET.3	
<b>FILLER-1</b>		PART No	
		ISV 2234	
		D.S.CAT No	
		NOT TO BE ALLOTTED.	
		AHSP:-	
		CQA(A) KIRKEE	

9877 ASI

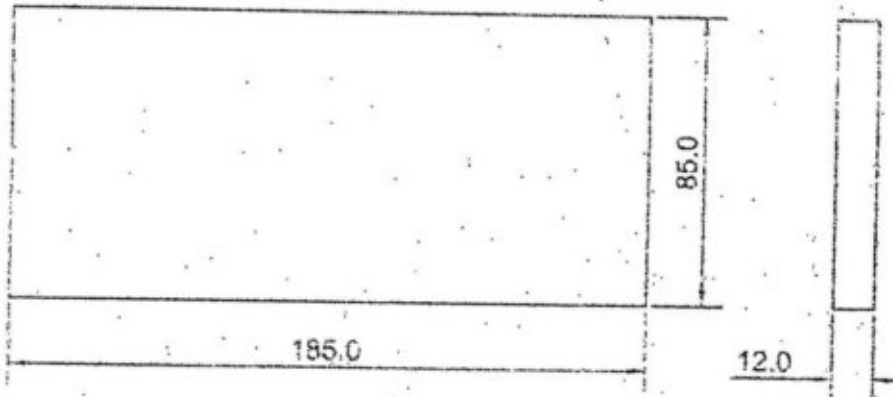
DRG. CONVENTIONS CONFORM TO IS: SPECIFICATIONS.

PART No.

DIMENSIONS ARE IN mm.

DC.337283-A.

GEN. TOLERANCE MEDIUM CLASS TO SPEC. IS:2102-1969.



**MATERIAL :**

PLYWOOD Gr. I TYPE BWR IN ACC WITH B.S. 1455 OR BWR TYPE A-A TO SPEC. IS : 303-1989

D-07051  
11/8

3

	30-06-2011	DC-37283-A	DRG. SEALED (PROV.)		
R.No.	DATE	AUTHORITY	REVISION	ZONE	AHSP D.O
					SIG

DRG. SEALED- 30-06-2011 (PROV.)

DRN. <i>R.R. Chakraverty</i>	CHD. <i>M. Jadhav</i>	TRD.	COMP.	ASSY. DRG.	ISV 557 GA
C.D.MAN	O.V.C.D.	SCALE- 1:4			
APPD <i>S</i>	FOR CQA(A)	EST.MASS-			
		GAUGE SCHED.	DATE- 02-06-2011		

MATL. AS ABOVE  
PROTECTIVE FINISH:-  
DESIGNER'S REF  
CQA(A) / AMN / 3504 - DET.4

PART No.		ISV 2235
D.S. CAT No		NOT TO BE ALLOTTED.
AHSP -		CQA(A) KIRKEE

**SPACER**



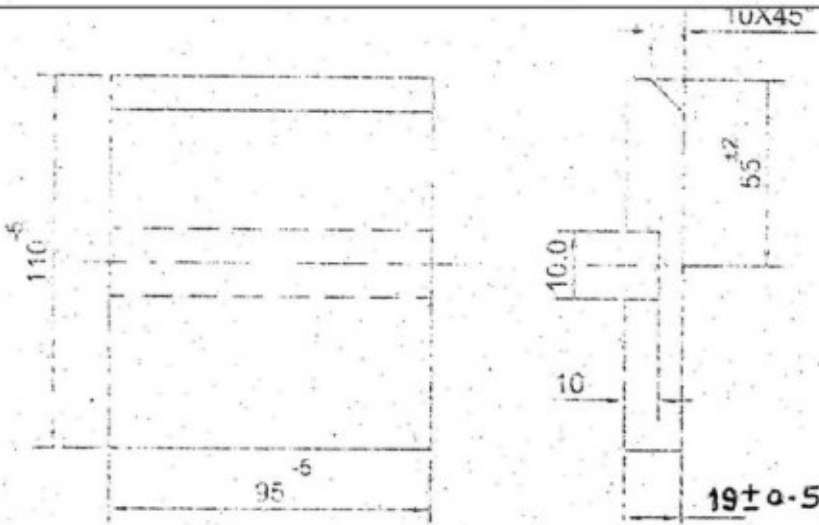
4

ISV 2239

DRG. CONVENTIONS CONFORM TO IS. SPECIFICATIONS

PART No DIMENSIONS ARE IN mm.

DC 37283-A



MATERIAL

PLYWOOD GR 1 TYPE BWR IN ACC WITH B.S. 1455 OR BWR TYPE A-A TO SPEC. IS:303-1989

10 103 131  
113

R.No.	DATE	AUTHORITY	REVISION	ZONE	AHSP	D.O.
	30-06-2011	DC 37283-A	DRG SEALED PROV			
DRG SEALED 30-06-2011 (PROV)						
DRN.	CHKD.	TRL.	COMP.	ASSY. DRG	ISV 626 A	
C.D/MAN		SCALE	2:1	EST MASS		
APPD.		GAUGE	5:10	DATE 01-06-2011		
MATERIAL AS ABOVE				DESIGNER'S REF		
PROTECTIVE FINISH				CQA(A)/AMN/3506 DET. 2		
				PART No		
				ISV 2239		
				D.S. CAT No		
				AHSP		
				CQA(A) KIRKEE		

SIDE PLY

38

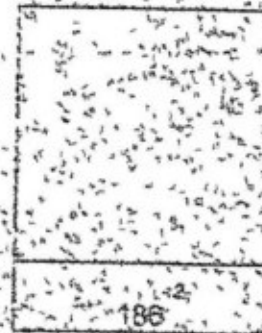
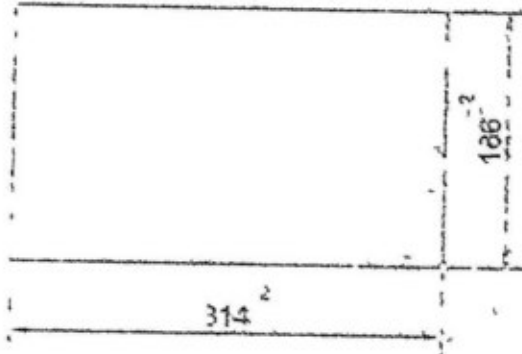
ISV 2236

DRG CONVENTIONS CONFORM TO IS SPECIFICATIONS.

ON L&P DIMENSIONS ARE IN mm

DC 27283-A

GEN TOLERANCE MEDIUM CLASS TO SPEC IS 2102-1969.



MATERIAL

EXPANDED POLYSTYRENE 30 kg/m<sup>3</sup> MIN  
TYPE 1 CLASS 2 (A.W. M.L.-T-503\*2 HUMIDITY  
(BY MASS) 0.15 MAX

ALT MATERIAL

EXPANDED POLYSTYRENE FOAM 30 kg/m<sup>3</sup>  
MIN; SPEC. S-771-984

30-06-2011		DC 27283-A	DRG SEALED / PROV.			
DR No	DATE	AUTHORITY	REVISION		ZONE	ARSP, D.O.
DRG SEALED		30-06-2011 (PROV)				SIG
DRN	REL	CHKD	TRD	COMP	ASSY DRG	ISV 557 GA
CD MAN		J/C D O	SCALE - 1 : 1			
AFPD		FOR CQWA	EST MASS			
MATL	IS ABOVE		GAJGE SCHED -			
PROTECTIVE FINISH			DATE - 25/06/2010			
FILLER, POLYSTYRENE				DESIGNER'S REF	CQA(A) / AMN / 3504 DET 5	
				PART No	ISV 2236	
				PUS CAT No	NOT TO BE RELOTTED	
				ARSP	CQA(A) KIRKEE	

00

ISV 2238

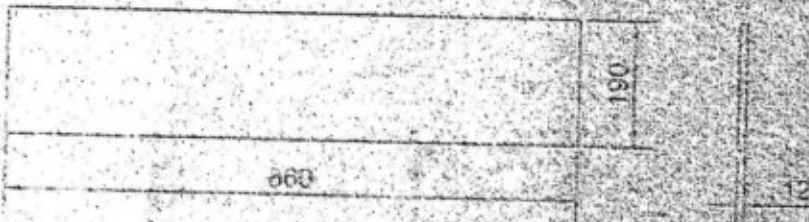
DRG. CONVENTIONS CONFORM TO IS: SPECIFICATIONS

PART No.

DIMENSIONS ARE IN mm.

DC.37283-A

GEN. TOLERANCE MEDIUM CLASS TO SPEC. IS:2102-1959



**MATERIAL :**

PLY WOOD Gr. I TYPE BWR IN ACC WITH B.S. 1455 OR BWR TYPE A-A TO SPEC. IS : 303-1989

Handwritten notes: 11/2

	30-06-2011	DC 37283-A	DRG. SEALED (PROV.)			
R.No.	DATE	AUTHORITY	REVISION	ZONE	AHSP	D.O.
						SIG.
DRG. SEALED- 30-06-2011 (PROV.)						
B)	DRN. <i>RB Dhanoo</i>	CHD. <i>MT Mathan</i>	TRD.	COMP.	ASSY DRG.	ISV 626 A
	C.D/MAN	D.I/C.D.O.	SCALE: 1:10			
			EST. MASS.			
APPD.	<i>S</i>	FOR CQA(A)	GAUGE SCHED.			
			DATE: 04-06-2011			
MATL: AS ABOVE				DESIGNER'S REF		
PROTECTIVE FINISH:				CQA(A) / AMN / 3506 DET.		
FRONT & BACK PLY				PART No.		
				ISV 2238		
				U.S. CAT No.		
				NOT TO BE ALLOTTED.		
				AHSP		
				CQA(A) KIRKEE		

ISV 2240

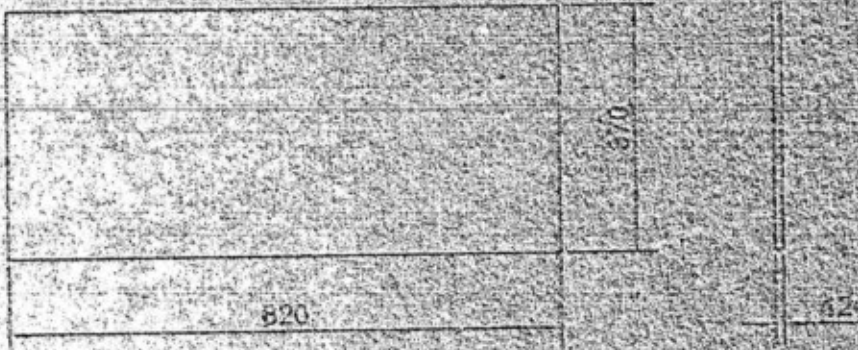
PART NO

DRG. CONVENTIONS CONFORM TO IS SPECIFICATIONS

DIMENSIONS ARE IN mm

DC.37283-A

GEN. TOLERANCE MEDIUM CLASS TO SPEC. IS:2102-1969



**MATERIAL**

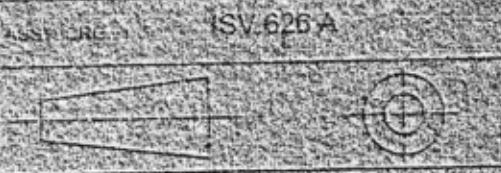
PLY WOOD Gr. 1 TYPE BWR IN ACC WITH B.S. 1455 OR BWR TYPE A-A TO SPEC. IS. 303-1989

Handwritten notes: 10-52031, 11

R.No.	DATE	AUTHORITY	REVISION	ZONE	ANSR	D.D	SIG
	30-06-2011	DC.37283-A	DRG. SEALED (PROV.)				

DRG. SEALED: 30-06-2011 (PROV.)

DRN. <i>S. S. Sivas</i>	CHD. <i>Mr. Jadhav</i>	TRD.	COMP.
C.D'MAN	O.I.C.D.C.	SCALE: 1:10	EST. MASS.
APPD. <i>[Signature]</i>	FOR COA(A)	GAUGE SCHD.	DATE: 04-06-2011



MATL: AS ABOVE  
PROTECTIVE FINISH:

DESIGNER'S REF: COA(A) / AMN 7 3506 DET 3

TOP & BASE PLY

PART NO: ISV 2240  
D.S.CAT No: NOT TO BE ALLOTTED  
ANSR: COA(A) KIRKEE

ISV 2241

DRG. CONVENTIONS CONFORM TO IS: SPECIFICATIONS.

PART No. DIMENSIONS ARE IN mm.

DC 37283-A

GEN TO: ERANCE MEDIUM CLASS TO SPEC. IS: 2102-1966.



**MATERIAL :**  
 PLY WOOD Gr. I TYPE BWR IN ACC WITH B.S. 1455 OR  
 BWR TYPE A-A TO SPEC. IS : 303-1989.

30-06-2011		DC 37283-A	DRG SEALED (PROV.)			
R.No.	DATE	AUTHORITY	REVISION	ZONE	AHSP	D.O.
DRG SEALED 30-06-2011 (PROV.)					SIG	
DRN. <i>SC. Sharma</i>	CHD. <i>K. Jadhav</i>	TRD.	COMP.	ASSY. DRG ISV 626 A		
C.D'MAN	O I/C D.O.	SCALE: 2:1	EST. MASS.			
APPD. <i>S</i>	FOR CQA(A)	GAUGE SCHED.	DATE: 06-06-2011			
MATE: AS ABOVE				DESIGNER'S REF		
PROTECTIVE FINISH:				CQA(A) / AMN / 3506 DET.4		
<b>BATTEN-1</b>				PART No		
				<b>ISV 2241</b>		
				D.S. CAT No		
				NOT TO BE ALLOTTED.		
				AHSP		
				<b>CQA(A) KIRKEE</b>		

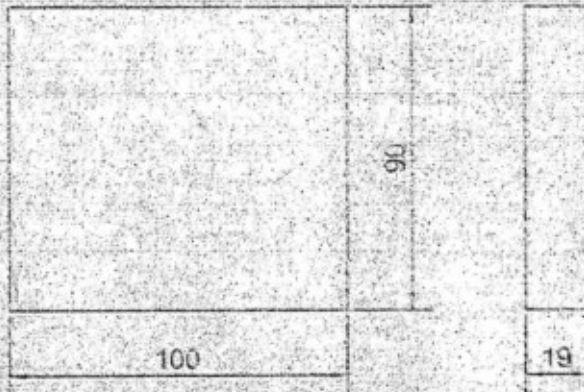
ISV 2243

DRG. CONVENTIONS CONFORM TO IS: SPECIFICATIONS.

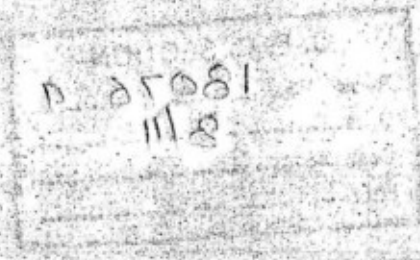
PART No. DIMENSIONS ARE IN mm.

DC.37283-A

GEN. TOLERANCE MEDIUM CLASS TO SPEC. IS:2102-1969.



**MATERIAL :**  
 PLY WOOD Gr. 1 TYPE BWR IN ACC WITH B.S. 1455 OR  
 BWR TYPE A-A TO SPEC. IS : 303-1989.



R.No.	DATE	AUTHORITY	REVISION	ZONE	AMSP	D.O
	30-06-2011	DC 37283-A	DRG. SEALED (PROV.)			

DRG. SEALED:- 30-06-2011 (PROV.)

DRN. <i>KG Dhanoo</i>	CHD. <i>M.V. Jain</i>	TRD.	COMP.	ASSY. DRG.	ISV 626 A
C.D'MAN	D.T.C.D.O.	SCALE: 2:1	EST. MASS.		
APPD. <i>[Signature]</i>	FOR CQA(A)	GAUGE SCHD.	DATE: 04-06-2011		
MATL: AS ABOVE	DESIGNER'S REF.	CQA(A) / AMN / 3506 DET. 6			
PROTECTIVE FINISH:	PART No.	ISV 2243			
<b>BATTEN-3</b>	D.S. CAT No.	NOT TO BE ALLOTTED.			
	AMSP:	CQA(A) KIRKEE			

7

ISV 2242

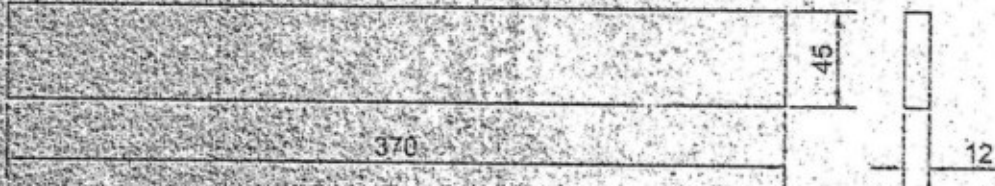
DRG. CONVENTIONS CONFORM TO IS: SPECIFICATIONS.

PART No.

DIMENSIONS ARE IN mm.

DC 37283-A

GEN. TOLERANCE MEDIUM CLASS TO SPEC. IS:2102-1969.



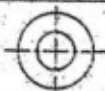
**MATERIAL:**

PLY WOOD Gr 1 TYPE BWR IN ACC WITH B.S. 1455 OR BWR TYPE A-A TO SPEC. IS : 303-1989.

0-11061  
11

30-06-2011	DC 37283-A	DRG. SEALED (PROV)				
R.No.	DATE	AUTHORITY	REVISION	ZONE	AHSP	D.O.
DRG. SEALED: 30-06-2011 (PROV)						SIG.

DRN. <i>R.K. Sharma</i>	CHD. <i>Mr. Sharma</i>	TRD.	COMP.	ASSY. DRG.	ISV 626 A
C.D/MAN	O.H.C D.O.	SCALE: 3:1			
APPD. <i>S</i>	FOR CQA(A)	EST. MASS.			
MATERIAL: AS ABOVE					
PROTECTIVE FINISH					
<b>BATTEN-2</b>				DESIGNER'S REF.	CQA(A) / AMN / 3506 DET.5
				PART No.	ISV 2242
				D.S. CAT No.	NOT TO BE ALLOTTED.
				AHSP-	CQA(A) KIRKEE



ISV 2244

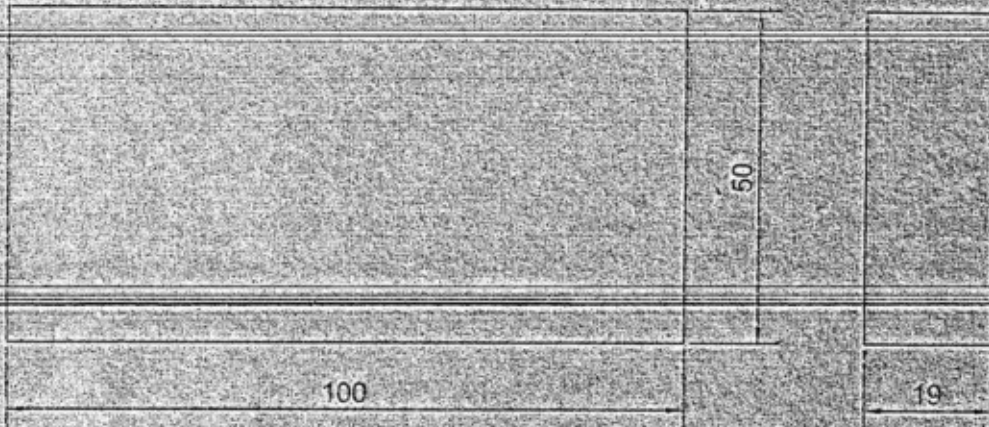
DRG. CONVENTIONS CONFORM TO IS: SPECIFICATIONS

PART No.

DIMENSIONS ARE IN mm.

DC 37283-A

GEN. TOLERANCE MEDIUM CLASS TO SPEC. IS: 2102-1969.



**MATERIAL :**

PLY WOOD Gr. I TYPE BWR IN ACC WITH B.S. 1455 OR BWR TYPE A-A TO SPEC. IS : 303-1989.

Handwritten notes: 11/08/11, 11/5

R.No.	DATE	AUTHORITY	REVISION	ZONE	AHSP	D.O.
	30-06-2011	DC 37283-A	DRG. SEALED (PROV.)			
DRG. SEALED- 30-06-2011 (PROV.)						

DRN. <i>DRB</i>	CHD. <i>DRB</i>	TRD.	COMP.	ASSY. DRG.	ISV 626 A
C.D'MAN	O/T/D.O.	SCALE- 2:1	EST.MASS-		
APPD. <i>[Signature]</i>	FOR CQA(A)	GAUGE SCHED-	DATE- 06-06-2011		
MATL- AS ABOVE				DESIGNER'S REF CQA(A) / AMN / 3506 DET. 7	
PROTECTIVE FINISH-				PART No. <b>ISV 2244</b>	
<b>BATTEN-4</b>				D.S.CAT No. NOT TO BE ALLOTTED	
				AHSP- <b>CQA(A) KIRKEE</b>	

ISV 2247

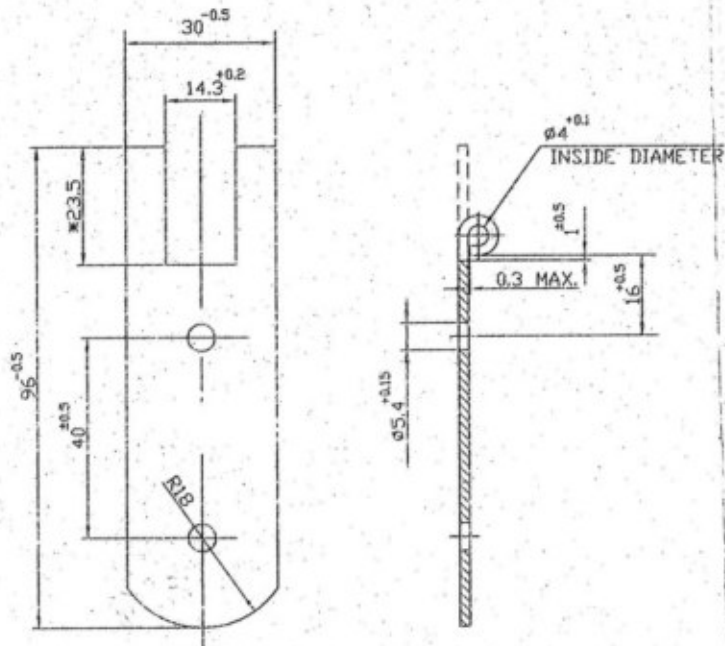
ON PART NO

DRG. CONVENTIONS CONFORM TO IS: SPECIFICATIONS

DIMENSIONS ARE IN mm.

DC.37283-A

GEN. TOL. MEDIUM CLASS TO IS:2102.



DEVELOPMENT

**MATERIAL :-**

COLD ROLLED CARBON STEEL STRIP, IN ACC. WITH ASTM A 109 M-77  
DRAWING QUALITY ALUMINIUM KILLED TEMPER NO.3 EDGE NO.4 FINISH NO.2  
DIMENSION OF STRIP:- $2 \pm 0.05$  ( $0.0787 \pm 0.002$ )

**ALT. MATERIAL :-**

COLD REDUCED LOW CARBON STEEL STRIP TO SPEN. IS : 513-2008  
DESIGNATION CR 1 TEMPER 1/4 HARD WITH 'P' CONTENT 0.035% Max.

\* INFORMATION DIMENSIONS ADJUST TO SUIT FINAL DIMENSIONS OF PART.

				DRN:- RAUT	CHD:-	TRD:-	COMP:-	ASSY DRG	ISV303 SA
				C.D/MAN	O/C D.O.	SCALE:- 1:1			
				APPD. <i>[Signature]</i>	FOR COM(A)	EST.MASS:-	GAUGE SCHD:-		
R. NO.	DATE	AUTHORITY	REVISION	ZONE	AHSP	D.O.	DATE:- 15-06-2010	DESIGNER'S REF.	
	30-06-2011	DC 37283-A	DRG. SEALED (PROV.)					CQA(A)AMN /3507	DET.1
DRG SEALED:- 30-06-2011 (PROV.)								PART NO	ISV 2247
								D.S. CAT NO	
								AHSP:	CQA(A) KIRKEE

**HINGE FIXED HALF**

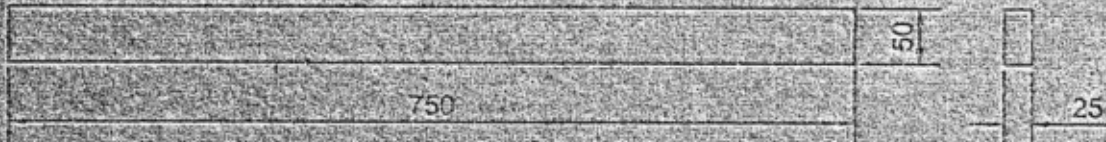
ISV 2245

DRG. CONVENTIONS CONFORM TO IS: SPECIFICATIONS.

PART No. DIMENSIONS ARE IN: mm.

DC 37283-A

GEN. TOLERANCE MEDIUM CLASS TO SPEC. IS: 2102-1969.



**MATERIAL:**

PLY WOOD Gr. I TYPE BWR IN ACC WITH B.S. 1455 OR BWR TYPE A-A TO SPEC. IS: 303-1989.

B-53061  
11/9

R.No.	DATE	AUTHORITY	REVISION	ZONE	AHSP	D.O.
	30-06-2011	DC 37283-A	DRG. SEALED (PROV.)			
					SIG	

DRG. SEALED - 30-06-2011 (PROV.)

DRN. <i>R.C. Dhanraj</i>	CHD. <i>M.K. Jadhav</i>	TRD.	COMP.	ASSY. DRG.	ISV 526 A
CD MAN	DIV. D.O.	SCALE: 1:5	EST. MASS.		
APPD. <i>S</i>	FOR CQA(A)	GALGE SCHED.	DATE: 06-06-2011		
MATERIAL: AS ABOVE				DESIGNER'S REF: CQA(A) / AMN / 3506 DET. 8	
PROTECTIVE FINISH:				PART No. ISV 2245	
<b>BATTEN-5</b>				D.S. CAT No. NOT TO BE ALLOTTED	
				A-ISP CQA(A) KIRKEE	

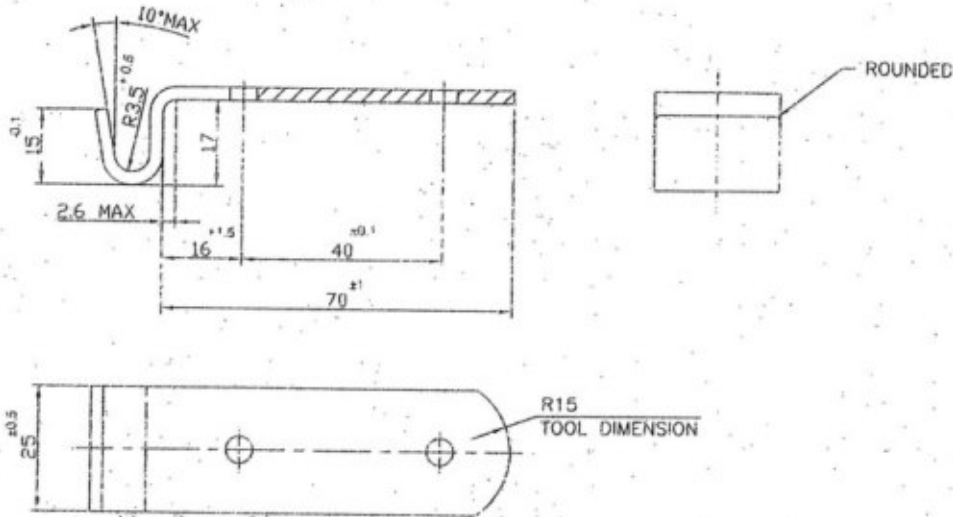
ISV 2246

PART NO.

DRG. CONVENTIONS CONFORM TO IS. SPECIFICATIONS  
DIMENSIONS ARE IN mm.

DC.37283-A.

GEN. TOL. MEDIUM CLASS TO IS:2102.



**MATERIAL :-**

COLD ROLLED CARBON STEEL STRIP IN ACC TO ASTM A 109M-77  
DRAWING QUALITY ALUMINIUM KILLED TEMPER Nm3 EDGE Nr4 FINISH Nr2  
DIMENSION OF STRIP:- 2.6±0.05 (0.102"±0.002")

**ALT. MATERIAL :-**

COLD REDUCED LOW CARBON STEEL STRIP TO SPEC. IS:513-2008  
DESIGNATION CR1, TEMPER 1/4 HARD WITH 'P'CONTENT 0.035% Max

**PROTECTIVE FINISH :-**

CADMIUM PLATING WITH SUPPLEMENTARY CHROMATE TREATMENT  
THICKNESS 0.0076 TO 0.020 TYPE II CLASS 1 IN ACC WITH FED  
SPEC: QQ-P-416

**ALT. PROTECTIVE FINISH :-**

ZINC COATING WITH CHROMATE TREATMENT TYPE III Fe/Zn 13 IN ACC  
WITH-ASTM B 633

DEVELOPMENT LENGTH:- 106mm

				DRN: RAJT	CHD: <i>S. S. Jadhav</i>	TRD:	COMP:	ASSY DRG	ISV 626 A
				C.D/MAN.	O/C D/O.	SCALE: 1:1			
				APPD	<i>S</i>	EST/MASS:			
					FOR CQA(A)	GAUGE SCHED.		DESIGNER'S REF	
						DATE: 25-08-2010		CQA(A)/AMN / 3509	
								PART NO	
								ISV 2246	
								D.S. CAT NO	
								AHSP: CQA(A) KIRKEE	

**TONGUE**

ISV 2249

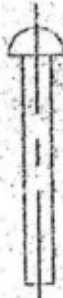
PART No.

DRG. CONVENTIONS CONFORM TO IS: SPECIFICATIONS.

DIMENSIONS ARE IN mm.

DC.37283-A.

GEN. TOLERANCE MEDIUM CLASS TO SPEC: IS:2102-1969



ACTUAL SIZE



STANDARD HEAD

33-0.5

Ø4.0-0.1

MATERIAL:

STEEL WIRE IN ACC WITH SAE J 430, GRAD. 0

ALT. MATERIAL:

STEEL WIRE TO SPEC IS:7557-1994 IN ANNEALED CONDITION WITH P. CONTENT 0.04% Max.

PROTECTIVE FINISH:

CADMIUM PLATING WITH SUPPLEMENTARY CHROMATE TREATMENT TYPE II, CLASS I, IN ACC WITH FED SPEC. QQ-P-416

R.No.	DATE	AUTHORITY	REVISION	ZONE	ALSP	D.O.
	30-06-2011	DC 37283-A	DRG. SEALED (PROV.)			

DRG SEALED: 30-06-2011 (PROV.)						
DRN. <i>RC Dhawan</i>	CHD. <i>[Signature]</i>	TRD.	COMP.	ASBY. DRG.	ISV302-5A	
C.D/MAN	Q.I. <i>[Signature]</i>	SCALE: 1:1	EST. MASS.			
APPD. <i>[Signature]</i>	FOR CORN	GAUGE. SCHO.	DATE: 09-03-2011			
MATL: AS ABOVE				DESIGNER'S REF		
PROTECTIVE FINISH: AS ABOVE				COA(A) / AMN / 3507 DET 3		
<b>HINGE RIVET</b>				PART No.		
				ISV 2249		
				D.S. CAT No.		
				NOT TO BE ALLOTTED.		
				AHSP		
				COA(A) KIRKEE		

ISV 2248

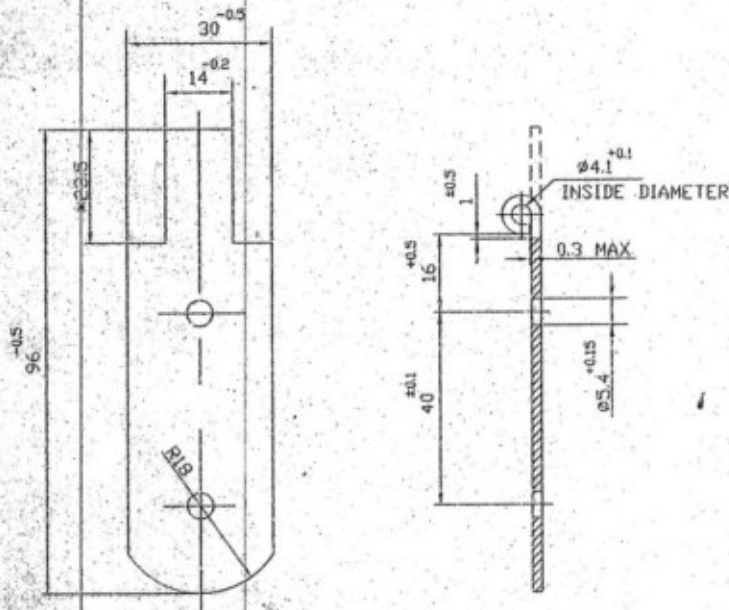
PART NO.

DRG. CONVENTIONS CONFORM TO IS: SPECIFICATIONS

DIMENSIONS ARE IN mm.

DC 37283-A

GEN. TOL. MEDIUM CLASS TO IS:2102.



DEVELOPMENT

**MATERIAL :-**

COLD ROLLED CARBON STEEL STRIP, IN ACC. WITH ASTM A 09 M-77 DRAWING QUALITY ALUMINIUM KILLED TEMPER NO.3 EDGE NO.4 FINISH NO.2

**ALT. MATERIAL :-**

COLD REDUCED LOW CARBON STEEL STRIP TO SPEN. IS : 513-2008 DESIGNATION CR 1 TEMPER 1/4 HARD WITH 'P' CONTENT 0.035% Max.

**DIMENSION OF STRIP:-**  $2 \pm 0.06$  (0.0787"  $\pm$  0.002")

\* INFORMATION DIMENSIONS ADJUST TO SUIT FINAL DIMENSIONS OF PART.

DRN: <i>RCC Divies</i>	CHD: <i>A.V. Jadhav</i>	TRD:	COMP:
C.D/MAN	O/C D.O.	SCALE: NTS	EST MASS:
APPD	FOR CQA(A)	GAUGE SCHD:	DATE: 15-06-2010
MATL: AS ABOVE	PROTECTIVE FINISH:	DESIGNER'S REF	
DRG. SEALED: 30-06-2011 (PROV.)		CQA(A)/AMN / 3507 DET. 2	
PART NO.		ISV 2248	
D.S CAT NO.		AHSP: CQA(A) KIRKEE	

DRN: <i>RCC Divies</i>	CHD: <i>A.V. Jadhav</i>	TRD:	COMP:	ASSY.DRG.	ISV303 SA
C.D/MAN	O/C D.O.	SCALE: NTS	EST MASS:		
APPD	FOR CQA(A)	GAUGE SCHD:	DATE: 15-06-2010	DESIGNER'S REF	
MATL: AS ABOVE	PROTECTIVE FINISH:	CQA(A)/AMN / 3507 DET. 2			
DRG. SEALED: 30-06-2011 (PROV.)		PART NO.			
		ISV 2248			
		D.S CAT NO.			
		AHSP: CQA(A) KIRKEE			

**HINGE MOVING HALF**

16

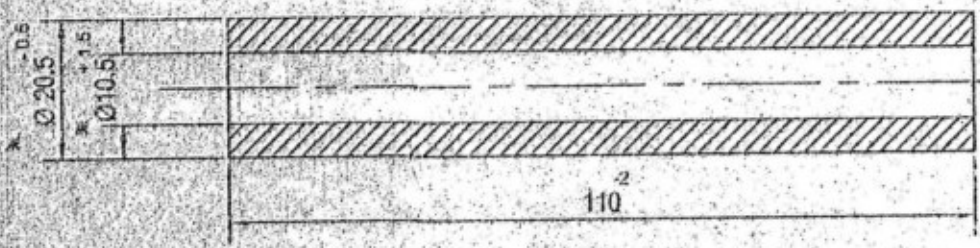
ISV 2250

PART No.

DRG. CONVENTIONS CONFORM TO IS: SPECIFICATIONS.  
DIMENSIONS ARE IN mm.

DC.37283-A

GEN. TOLERANCE MEDIUM CLASS TO SPEC. IS:2102-1969.



**MATERIAL :-**

- 1) POLYPROPYLENE, GENERAL PURPOSE IN ACC WITH L-P-394  
COLOUR:- BROWN
- 2) \* THE TOLERANCE INCLUDES CASTING TAPERS
- 3) NO BURRS ALLOWED

02031  
11/8

R.No.	DATE	AUTHORITY	REVISION	ZONE	AHSP	D.O.
	30-06-2011	DC 37283-A	DRG. SEALED (PROV.)			
DRG. SEALED - 30-06-2011 (PROV.)				SIG.		

DRN. <i>R.K. Sharma</i>	CHD.	TRD.	COMP.	ASSY. DRG.	ISV 304 SA
C.D.MAN.	<i>Q/C D.O.</i>	SCALE: 1:1			
APPD. <i>[Signature]</i>	FOR CQA(A)	EST M 33-			
MATERIAL: AS ABOVE			GAUGE SCHED-		
PROTECTIVE FINISH-				DESIGNER'S REF.	CQA(A) / AMN / 3508 DET 1
<b>SLEEVE</b>				PART No.	ISV 2250
				D.S. CAT No.	NOT TO BE ALLOTTED.
				AHSP-	CQA(A) KIRKEE

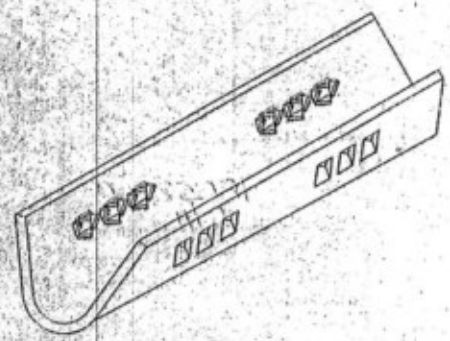
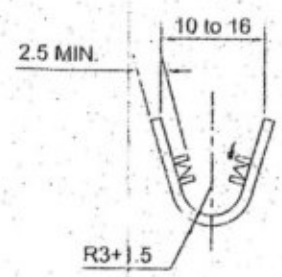
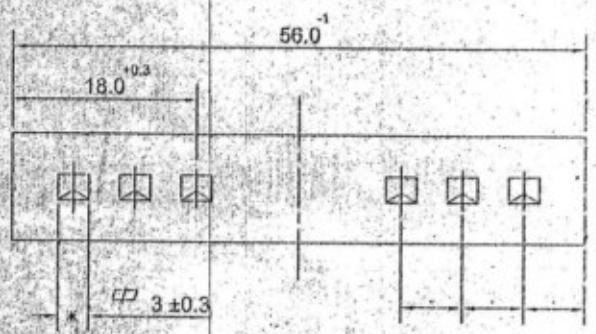
ISV 2251

PART NO.

DRG. CONVENTIONS CONFORM TO IS: SPECIFICATIONS  
DIMENSIONS ARE IN mm.

DC 37283-A

GEN. TOL. MEDIUM CLASS TO IS:2102.



**MATERIAL :-**

STRIP, S 304, COLD ROLLED, FINISH No. 2  
THICKNESS:- 1 MM (NOMINAL)

**ALT.MATERIAL :-**

STEEL STRIP TO SPEC. IS:6911-1992 (RA-2004) DESIGN.  
X 04 Cr 19Ni9 WITH 'P' CONTENT 0.04% Max.

I.A.W. ASTM A 240 AND ASTM A 480

\* PERMIT 12 CIRCLE HOLES,  $\phi 2 \pm 1$  DIM. INSTEAD OF SQUARE HOLES

DEVELOPMENT LENGTH:-30 MM

					DRN: <i>R.C. Shrivastava</i>	CHD: <i>R.A. Jadhav</i>	TRD:	COMP:	ASSY.DRG	
					C D/MAN	O W D/G	SCALE: NTS		ISV 304 SA	
					APPD: <i>[Signature]</i>		EST.MASS:-			
						FOR CQA(A)	GAUGE SCHED:-			
R. NO.	DATE	AUTHORITY	REVISION	ZONE	AHSP	D.O.	MATL - AS ABOVE	DATE - '15-03-2011'	DESIGNER'S REF	
						SIG.	PROTECTIVE FINISH		CQA(A)/AMN / 3508 DET 2	
DRG. SEALED: 30-08-2011 (PROV.)										PART NO.
										ISV 2251
										D.S. CAT NO.
										AHSP: CQA(A) KIRKEE

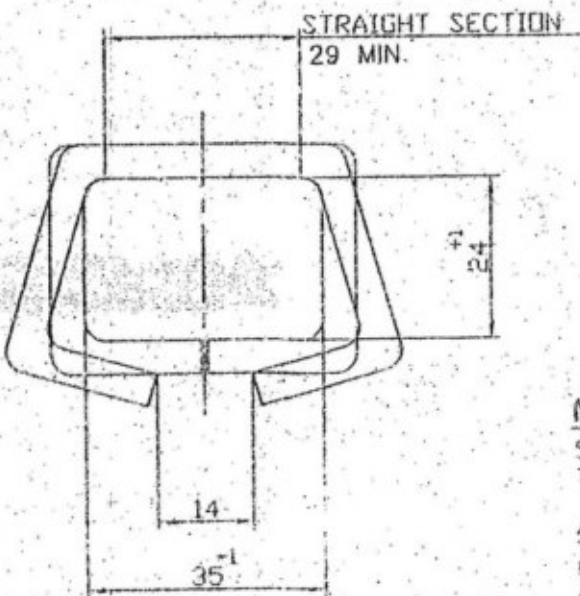
CLAMP

ISV 2255

DRG. CONVENTIONS CONFORM TO IS: SPECIFICATIONS.  
DIMENSIONS ARE IN mm.

DC.37283-A

GEN. TOLERANCE MEDIUM CLASS TO SPEC. IS:2102-1969.



**MATERIAL :-**

STEEL ROD, COLD DRAWN SAE 1010 TO 1020  
THICKNESS:  $\phi$  5.00

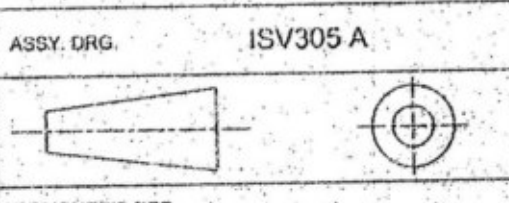
**ALT. MATERIAL :-**

MS WIRE DIA 5mm TO SPEC. IS:280-1978  
(3rd REW) IN SOFT DRAWN CONDITION.  
COMPOSITION AS PER IS:7887-1992,  
Gde 8 WITH 'P' CONTENT 0.04% Max.

Handwritten notes: 0 21131, 113

R.No.	DATE	AUTHORITY	REVISION	ZONE	AHSP	D.O.
	30-06-2011	DC 37283-A	DRG. SEALED (PROV.)			
DRG. SEALED- 30-06-2011 (PROV.)				SIG.		

DRN. <i>R.C. Chious</i>	CHD. <i>Ab N Jadhav</i>	TRD.	COMP.
C.D/MAN	O/C D.O.	SCALE- 1:1 & 2:1	EST.MASS:-
APPD. <i>[Signature]</i>	FOR CQA(A)	GAUGE SCHD:-	DATE-16-03-2011



MATL: AS ABOVE  
PROTECTIVE FINISH: ~~XXXXXXXXXX~~

DESIGNER'S REF.  
CQA(A) / AMN / 3505 DET.4

**LOOP**

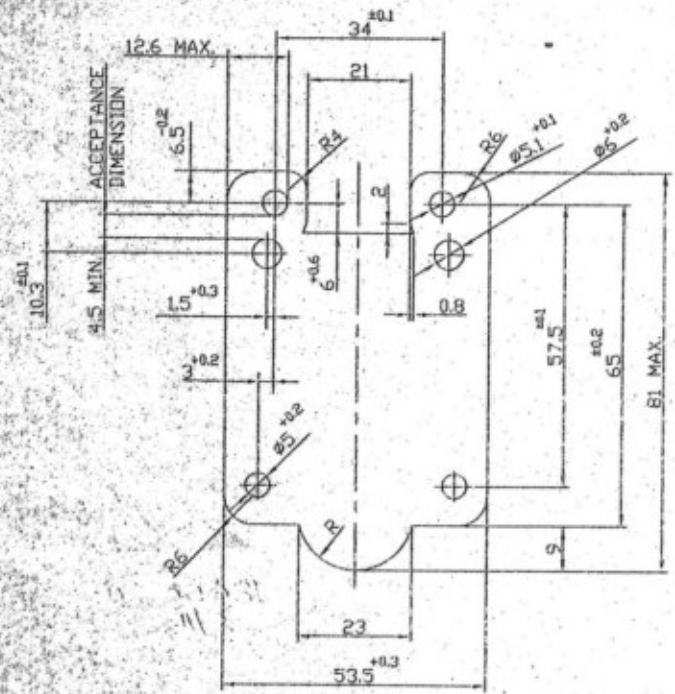
PART No. ISV 2255  
D.S.CAT No. NOT TO BE ALLOTTED  
AHSP - CQA(A) KIRKEE

ISV 2252

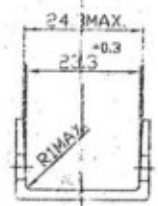
DRG. CONVENTIONS CONFORM TO IS: SPECIFICATIONS  
DIMENSIONS ARE IN mm.

DC 37283-A

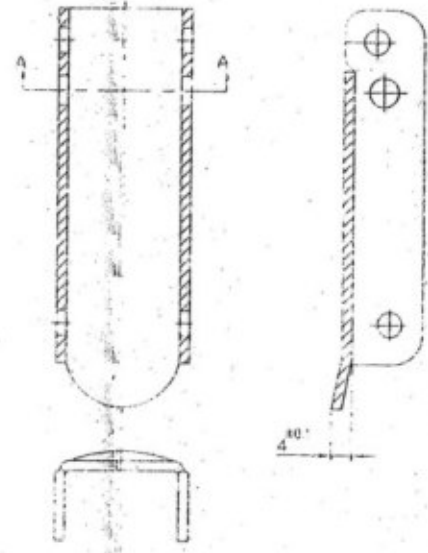
GEN. TOL. MEDIUM CLASS TO IS:2102.



DEVELOPMENT



SECTION - 'A-A'

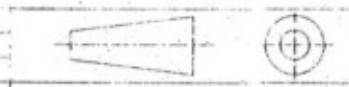


**MATERIAL :-**  
COLD ROLLED CARBON STEEL,  
STEEL STRIP IN ACC TO ASTM A109M-77  
DRAWING QUALITY, ALUMINIUM KILLED,  
TEMPER Nr3, EDGE Nr4, FINISH Nr2

**ALT. MATERIAL :-**  
COLD REDUCED LOW CARBON STEEL STRIP TO  
SPEC. IS: 513-2008, DESIGNATION CR1, TEMPER  
1/4 HARD WITH 'P' CONTENT 0.035% Max

**DIMENSION OF STRIP :-** 2±0.05(0.0787±0.002")  
DIMENSION WITHOUT TOLERANCE ARE  
TOOL DIMENSIONS.

DRN	RAU	CHD	TRD	JOMP	ASSY DRG	ISV305 A
C'DMAN	INC'D O	SCALE NTS	EST MASS			
APPC	FOR CD/IA	G'NGE SCHED	DATE '16-03-201'			
MATL	AS ABOVE	PROTECTIVE FINISH				
DRG SEALED- 30-06-2011 (PROV.)	DRG SEALED (PROV.)	ZONE	ANSP	SIG	DESIGNER'S REF: CQA(A) / AMN / 3505 DE1	



PART NO. ISV 2252  
D/S CAT NO  
AHSP: CQA(A) KIRKEE

LATCH



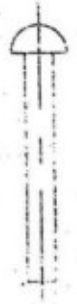
ISV 2254

DRG. CONVENTIONS CONFORM TO IS: SPECIFICATIONS

PART No. DIMENSIONS ARE IN mm.

DC.37283-A

GEN. TOLERANCE MEDIUM CLASS TO SPEC. IS:2102-1969.



ACTUAL SIZE

**MATERIAL :-**

STEEL WIRE IN ACCORDANCE WITH SAE J 430 GRADE 'O'

**ALT. MATERIAL :-**

- i) STEEL WIRE TO SPEC. IS:7557-1994 IN ANNEALED CONDITION WITH 'P' CONTENT 0.04% Max.
- ii) TO BE MANUFACTURED IN ACCORDANCE WITH SPEC.No. IS:2155-1962

R.No.	DATE	AUTHORITY	REVISION	ZONE	AHSP	D.O.
	30-06-2011	DC 37283-A	DRG. SEALED (PROV.)			

DRG SEALED - 30-06-2011 (PROV.)			
DRN. <i>AK</i>	CHD.	TRD	COMP
		SCALE: 1:1 & 2:1	ASSY DRG ISV305 A
G.D.MAN	D/IC D.O.	EST MASS	
APPD. <i>S</i>	FOR CQA(A)	GAUGE SCHD.	
MATL. AS ABOVE		DATE: 16-03-2011	DESIGNER'S REF
PROTECTIVE FINISH.			CQA(A) / AMN / 3505 DET.3

PART No. ISV 2254	
D.S.CAT No. NOT TO BE ALLOTTED.	
AHSP: CQA(A) KIRKEE	

**LATCH RIVET**

VS 303 SA

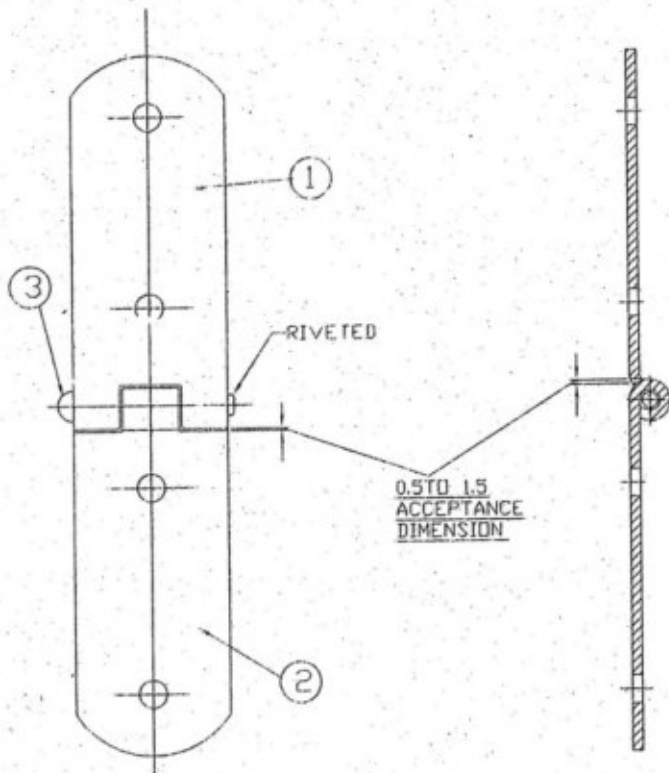
PART NAME

DRG. CONVENTIONS CONFORM TO IS: SPECIFICATIONS

DIMENSIONS ARE IN mm

DC 37283-A

GEN. TOL. MEDIUM CLASS TO IS:2102



LIST OF COMPONENTS

SL. NO.	DESCRIPTION	DESIGNER'S REF. No.	PART No.	QTY.
1	HINGE-FIXED HALF	CQA(A)/AMN/3507 DET.1	ISV 2247	1
2	HINGE-MOVING HALF	CQA(A)/AMN/3507 DET.2	ISV 2248	1
3	HINGE RIVET	CQA(A)/AMN/3507 DET.3	ISV 2249	1

NOTES:

1) WEIGHT OF HINGE ASSEMBLY=76 grms.

2) PROTECTIVE FINISH:-

CADMIUM PLATING WITH SUPPLEMENTRY CHROMATE TREATMENT THICKNESS 0.0076 TO 0.020 TYPE II, CLASS 1 IN ACC WITH FED. SPEC. QQ-P-416

ALTERNATIVE PROTECTIVE FINISH:-

ZINC COATING WITH CHROMATE TREATMENT TYPE II Fe/Zn 13 IN ACC WITH ASTM B 633

OR CADMIUM PLATING FOLLOWED BY CHROMATE PASSIVATION TO SPECN. IS:1572

R. NO.	DATE	AUTHORITY	REVISION	ZONE	AHSP	D.O.	SIG
	30-06-2011	DC 37283-A	DRG. SEALED (PROV.)				
DRG. SEALED- 30-06-2011 (PROV.)							

DRN. RAUT	CHD: <i>M.A. Jadhav</i>	TRD:	COMP:	ASSY DRG	ISV 626 A
C'DMAN	O/JC D.O.	SCALE: NTS			
APPO:	<i>S</i>	EST. MASS:-			
	FOR CQA(A)	GAUGE SCHD:-			
		DATE:- 15-06-2010			
MATL:-				DESIGNER'S REF	CQA(A)/AMN / 3507
PROTECTIVE FINISH:- AS ABOVE				PART NO.	ISV 303 SA
				D.S. CAT NO.	
				AHSP:	CQA(A) KIRKEE

HINGE ASSEMBLY

SHIS No - 65/0072/14.

DT - 28/12/2014

ENCL OF L.F. NO. 9911358228

**LIST OF COMPONENTS**

SL. NO.	DESCRIPTION	DESIGNER'S REF NO	PART NO.	QTY.
1	PLYWOOD BOX	CQA(A)/AMN/3506	ISV 626A	
2	BAND WITHDRAWAL	CQA(A)/AMN/3504 DET.1	ISV 2232	1
3	BOARD WITHDRAWAL	CQA(A)/AMN/3504 DET.2	ISV 2233	1
4	FILLER - I	CQA(A)/AMN/3504 DET.3	ISV 2234	3
5	SPACER	CQA(A)/AMN/3504 DET.4	ISV 2235	2
6	FILLER, POLYSTERENE	CQA(A)/AMN/3504 DET.5	ISV 2236	1
7	FILLER - II	CQA(A)/AMN/3504 DET.6	ISV 2237	3

DC 37283-A DT. 30-06-2011 for all above items.

15

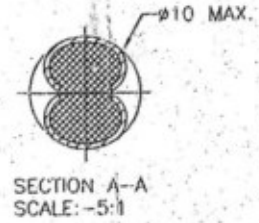
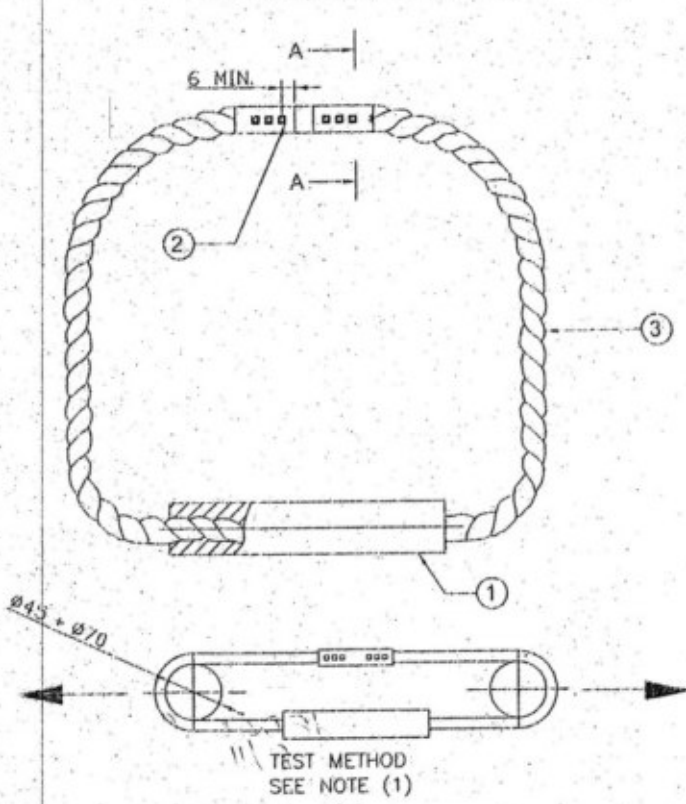
ISV 304 SA

PART NO

DRG CONVENTIONS CONFORM TO IS: SPECIFICATIONS  
DIMENSIONS ARE IN mm.

DC.37283-A

GEN. TOL. MEDIUM CLASS TO IS:2102.



LIST OF COMPONENTS				
SL. NO.	DESCRIPTION	DESIGNER'S REF. No.	PART No.	QTY.
1	SLEEVE	CQA(A)/AMN/3508 DET. 1	ISV 2250	1
2	CLAMP	CQA(A)/AMN/3508 DET. 2	ISV 2251	1
3	ROPE NYLON Ø 8.0x480 LONG	-	-	1

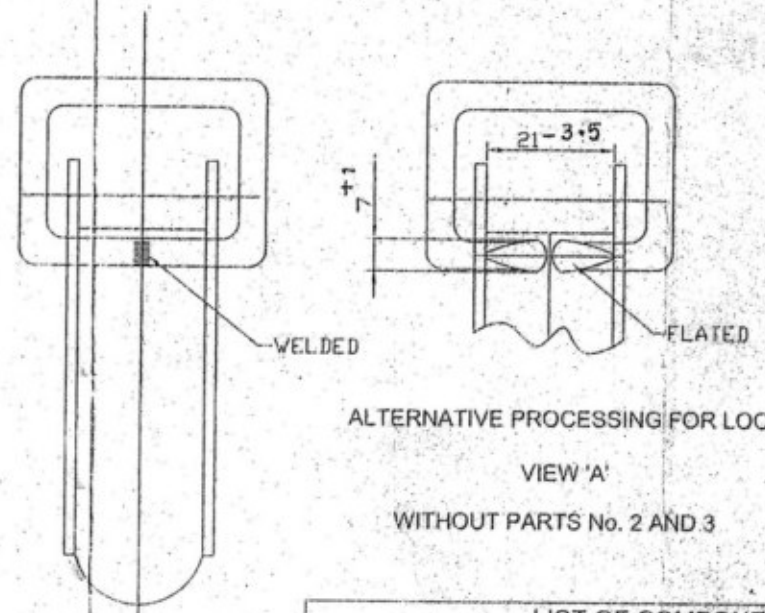
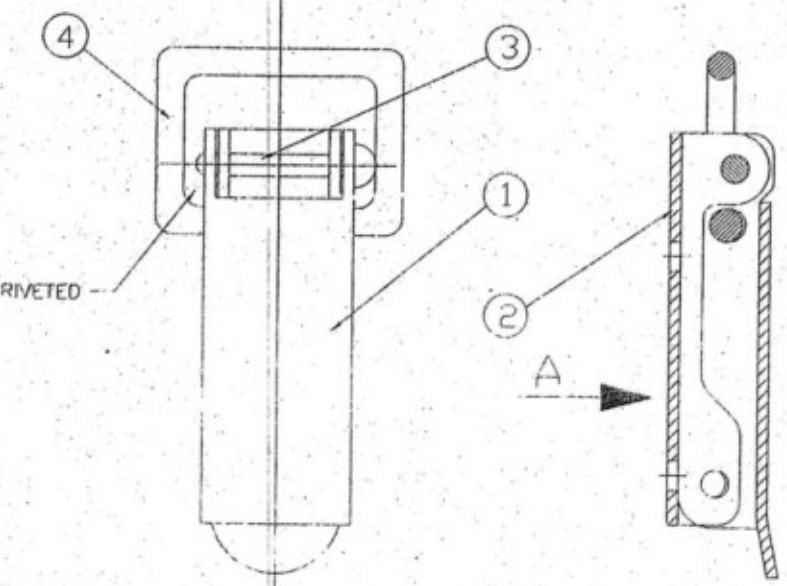
NOTE :-  
STRENGTH OF ASSEMBLY: 140 Kg MINIMUM  
(WHEN PULLED AS SHOWN IN TEST METHOD SKETCH)

DRG SEALED (PROV.)				DRG SEALED:- 30-06-2011 (PROV.)		DRN:- RAUT	CHD:- <i>S.A. Jadhav</i>	TRD:-	COMP:-	ASSY.DRG. ISV 626 A
R. NO.	DATE	AUTHORITY	REVISION	ZONE	AHSP SIG.	C.D/MAN	OVC D.O.	SCALE:- NTS	EST.MASS:-	
						APPD. <i>[Signature]</i>	FOR CQA(A)	GAUGE SCHD:-	DATE:- 15-06-2010	
						MATERIAL:- AS ABOVE				DESIGNER'S REF. CQA(A)/AMN / 3508
						PROTECTIVE FINISH:-				PART NO. ISV 304 SA
										D.S. CAT NO.
										AHSP: CQA(A) KIRKEE

HANDLE WITH SLEEVE

ISV 305 SA  
ON PART  
DC.37283-A

DRG. CONVENTIONS CONFORM TO IS: SPECIFICATIONS  
DIMENSIONS ARE IN mm.  
GEN. TOL. MEDIUM CLASS TO IS:2102.



**PROTECTIVE FINISH-**

ZINC COATING WITH SUPPLEMENTARY CHROMATE TREATMENT TYPE III Fe/Zn 12 ACC ASTM B 633.

**ALTERNATIVE TREATMENT :-**

CADMIUM PLATING WITH SUPPLEMENTARY CHROMATE TREATMENT TYPE II CLASS: 1 ACC TO FED. SPEC. QQ-P-416  
OR CADMIUM PLATING FOLLOWED BY CHROMATE PASIVATION SPECN. IS:1572

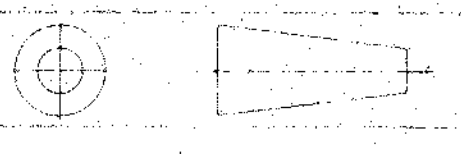
LIST OF COMPONENTS				
SL. NO.	DESCRIPTION	DESIGNER'S REF. No	PART No.	QTY
1	LATCH	COA(A) / AMN / 3505 DET.1	ISV 2252	1
2	BASE	COA(A) / AMN / 3505 DET.2	ISV 2253	1
3	LATCH RIVET	COA(A) / AMN / 3505 DET.3	ISV 2254	1
4	LOOP	COA(A) / AMN / 3505 DET.4	ISV 2255	1

DRG SEALED (PROV.)				DRG SEALED - 30-06-2011 (PROV.)		DRN - <i>RP Thera</i>	CHD - <i>A V Judhan</i>	TRD -	COMP -	ASSY DRG	ISV 626 A
R NO	DATE	AUTHORITY	REVISION	ZONE	AHSP	D.O	SIG	C.D/MAN	OVC D.O.	SCALE - NTS	EST. MASS -
										FOR COA(A)	GAUGE SCHED -
										DATE - 18-03-2011	
LATCH UNIT						MATERIAL -			DESIGNER'S REF.		
						PROTECTIVE FINISH - AS ABOVE			CQA(A) / AMN / 3505		
									PART NO		
									ISV 305 SA		
									D.S. CAT NO		
									AHSP: CQA(A) KIRKEE		

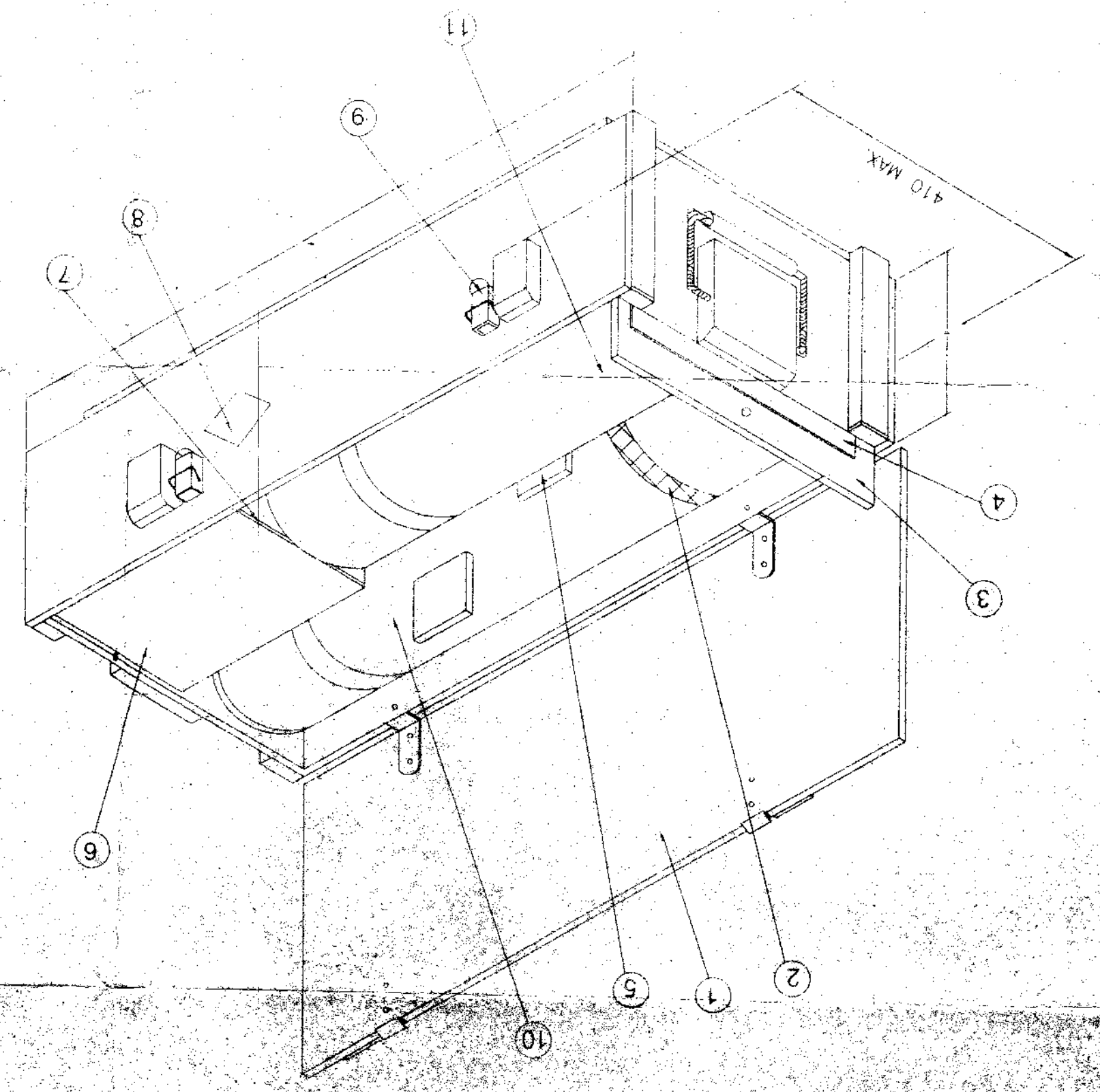
AHSP	COA(A) KIRKEE
DES. CAT. NO.	NOT TO BE ALLOTTED
PART NO.	ISV 557 GA
DESIGNER'S REF.	COA(A) / AMN / 3504

DATE	30-06-2011	DRG. SEALER (PROV.)	DC 37293 A	AUTHORITY	
REVISION		REVISION		ZONE	
AHSP	SIG	APPR	DATE	25-06-2010	SCALE
APPR	DATE	EST. MASS	G. R. D. C.	APPR	DATE
APPR	DATE	G. R. D. C.	APPR	DATE	G. R. D. C.

AMMUNITION CONTAINER ASSY 173 A  
 CONSISTING OF AMN. CONTAINER BOX C 55A (PLYWOOD) TO HOLD TWO AMN. CONTAINERS No. 82A & 83A HAVING  
 ONE CARTG. 125mm, APFSDS-T CL3254M (IMI DESIGN) & ONE MAIN CHARGE FOR 125mm (IMI DESIGN)



GENERAL ARRANGEMENT I



NOTE: IN ORDER TO OBTAIN TIGHT PACKING  
 PLACE FILLERS AS REQUIRED

Sr. No.	DESCRIPTION	DESIGNER'S REF. No.	PART No.	QTY
1	PLYWOOD BOX	COA(A)/AMN/3506	ISV-526-A	1
2	BAND WITHDRAWAL	COA(A)/AMN/3504 DET.1	ISV 2232	1
3	BOARD WITHDRAWAL	COA(A)/AMN/3504 DET.2	ISV 2233	1
4	FILTER-I	COA(A)/AMN/3504 DET.3	ISV 2234	0-4
5	SPACER	COA(A)/AMN/3504 DET.4	ISV 2235	2
6	FILTER, POLYSTERENE	COA(A)/AMN/3504 DET.5	ISV 2236	1
7	FILTER-II	COA(A)/AMN/3504 DET.6	ISV 2237	1-2
8	GOVT. EXPLOSIVE LABEL	LABLE IA 1009		1
9	SEAL			2
10	AMN. CONTAINER No. 82 A TO HOLD CARTG. 125mm, APFSDS-T CL 3254 M (IMI DESIGN)	COA(A)/AMN/3502	ISV 558 GA	1
11	AMN. CONTAINER No. 83 A TO HOLD MAIN CHARGE FOR 125mm (IMI DESIGN)	COA(A)/AMN/3500	ISV 559 GA	1

LIST OF COMPONENTS