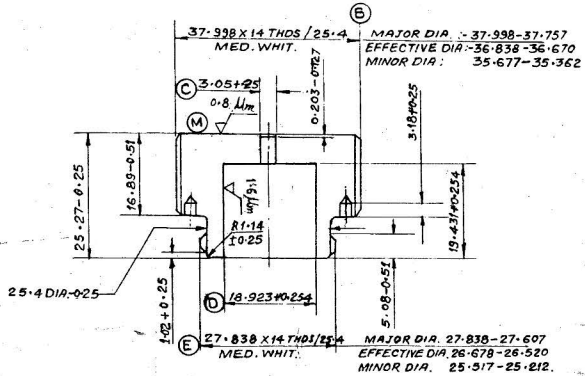


DRG. CONVENTIONS CONFORM TO IS: 695
 DIMENSIONS ARE IN MM.

DCI. 28146-A.

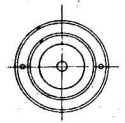


UNLESS OTHERWISE STATED:-
 ALL BURRS & SHARP EDGES TO BE REMOVED.
 A RADIUS OR CHAMFER OF 0.51(MAX.) IS PERMITTED
 IN THE CORNERS OF BLIND HOLES, RECESSES & STEPS.

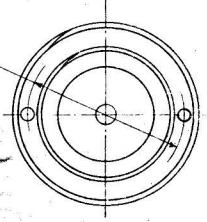
N.B. ENDS OF THREADS TO BE CHAMFERED AT 45°
 NOT EXCEEDING FULL DEPTH OF THREAD.

MATERIAL:-
 BRASS TO B.S. 249 CL.B. OR ALTERNATIVELY IN INDIA
 BRASS TO BS 2874 - CZ 1213 Pb.

31.75 (T.P) 2 HOLES 2.550 ± 0.127 DIA.
 (2.55 DRILL)



ACTUAL SIZE



INVERTED PLAN

GROUP	FEATURE	CHARACTERISTIC	TOLERANCE	DATUM
1	2 HOLES (A)	POSITION	0.127 DIA. (MMC)	DIA (E)
	DIA (D) & (C)	CONCENTRICITY	0.127 DIA. (MMC)	(M.M.C)
2	DIA (C)	CONCENTRICITY	0.127 DIA. (MMC)	DIA (D) (MMC)
3	FACE (W)	SQUARENESS	0.076 WIDE	DIA (E) (MMC)

21-5-90	DCI 34870-A	DIM 3.05 ± 0.25 WAS 3.05 ± 0.5 ON NEG. TOL. - ACTIVE AMENDED TO AGREE WITH MASTER COPY. RETRACED WITHOUT CHANGE.	E x 5, 6			DRN:- SDI	CND:- SDI	TRD:- KMK	COMP:- AH	ASSY. DRG.
26-4-86		PREVIOUS D.C.I. NOS:- 28146-A, 28448-A, 30256-A, 30273-A, 31358-A, 31462-A, 33359-A				C'D MAN	0.1% D.O.	EST. MAST.		
						APP.		GAUGE SCHD:-		
								DATE:- 30-9-58		
R.N.	DATE	AUTHORITY	REVISION	ZONE	AHSP D.O. SIGN.	MATERIAL:- AS ABOVE				
						PROTECTIVE FINISH:-				
						DRG. SEALED:- 5-7-66				

DESIGNER'S REFT.
 L S 19204/E/344
 PART NO. QX 1533
 QX 189 GE
 D.S. CAT N°
 AHSP - C.I.(A). KIRKEE

MAGAZINE

9-5-03	SCANNED WITHOUT CHANGE.		
DATE	AUTHORITY	REVISION	AHSP D.O.