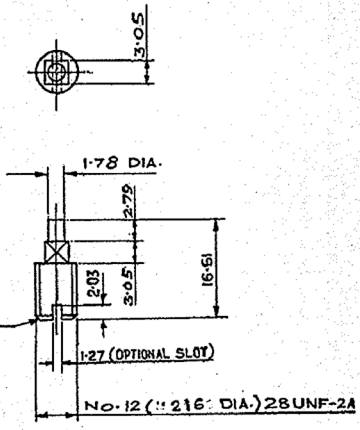


DS. CAT. NO.
1005 - 001540

FOR EXPLANATION SEE DD NOTE SHEET No. 3
THIRD ANGLE PROJECTION, DIMENSIONS ARE IN MILLIMETRES.

AUTHY DATE 23.08.15
BRIEF RECORDED
SIG.



CHAMFER AT 45° X .25 MAX.
TO REMOVE SHARP EDGE.

NOTE :-
WHERE TOLERANCES ARE NOT SHOWN
DIMENSIONS IN WHOLE NUMBER OR WITH
ONE DECIMAL PLACE ± 0.27 mm.
DIMENSIONS WITH TWO DECIMAL PLACES ± 0.13 mm.

MATERIAL :-
IS: 5517-1993, DESGN. 42 Cr 4 Mo 2
~~BS 970 Pt. 3 + 1991 Gr. 8.17 M 40.~~
ALT. MATERIAL :-
~~BS 970 Pt. 3 + 1991 Gr. 7.05 M 40.~~

MATERIAL :- ~~BS 970 PART 3 + 1991 Gr. 8.17 M 40~~
~~ALT. MATERIAL :- BS 970 Pt. 3 + 1991~~
~~Gr. 8.17 M 40 CONDITION 1~~
HARDNESS :- 300-350 H.V.
FINISH :-
PHOSPHATE TO SPECN: SES 0465 (01-1988)
CLASS & OIL FINISH

NOTE :-
FOR SPECN. LATEST ISSUE
SHOULD BE FOLLOWED

ICR-1431 METRIC.

23.08.15 DC No. 26763-SA MATL. AMENDED AMENDT. No. 003/15 DL 19.08.15

16.7.92	21860-SA	ALT. MATERIAL ADDED	for J30
10.4.90	20713-3A	FINISH AMENDED	for J30
8.11.87	19815-SA	MATL. AMENDED	for Lt. Col.
21.5.87	19625-SA	MATL. AMENDED & NOTE FOR SPECN. ADDED	for Lt. Col.
7.1.77	14973-3A	DRAWING SEALED	for Lt. Col.

ASSLY. DRG. 1005-001504
INSP. INSTRS.
DRAWN [] CHECKED [] TRACED [] TRN. CHD. []
APPROVED. [Signature]
DATE: 19.6.67. M. Lally V.C.D.O.
DESIGNER'S REF. ARDE-657.
DETAIL No. 291.
PS. CAT. No. 1005-001540

AMENDMENTS.
SEALED:- D.C.(U) 14973-SA DT. 7.1.77
MATERIAL:- AS STATED
PROTECTIVE FINISH:- AS ABOVE.
ESTIMATED WEIGHT:-
SCALE:- 2/1.

FORE SIGHT.

CISA. ICHAPUR.