

42509

7490312604

THIS DOCUMENT AND THE INFORMATION CONTAINED IN IT ARE PROPRIETARY AND CONFIDENTIAL TO OFTI. NO PERSON OR ENTITY IS ALLOWED TO COPY, REPRODUCE, REPRODUCE OR PUBLISH ANY PART OF THIS DOCUMENT, NOR DISCLOSE ITS CONTENTS TO OTHERS, NOR MAKE ANY USE OF IT, NOR ALLOW OR ASSIST OTHERS TO MAKE ANY USE OF IT UNLESS BY THE PRIOR WRITTEN EXPRESS AUTHORIZATION OF OFTI AND THEN ONLY TO THE EXTENT AUTHORIZED. COPYRIGHT-OFI.

2

DWG NO	Y18946A-00
SHEET REV RECORD	ALL SHEETS ARE THE SAME REVISION

REV	ECO	DESCRIPTION	DATE	APVD
01		Freeze	24-Oct-17	E. Reshaf
	100693	Identical To Previous	08-Apr-18	L. Goldstein

B

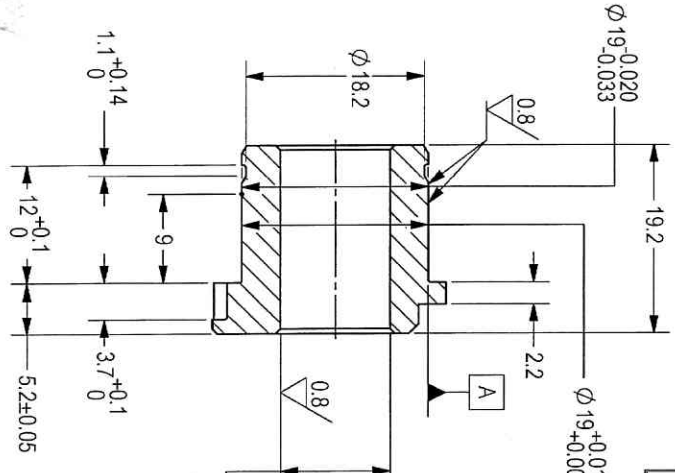
- NOTES:
- INTERPRET THIS DRAWING IAW ASME Y14.100M.
  - MATERIAL: CRES BAR TYPE 17-4PH PER AMS-5643. PURCHASED IN CONDITION H1150.
  - UNLESS OTHERWISE SPECIFIED, UNDEFINED MACHINED FILLET RADI SHALL BE 0.2, 0.3.
  - DEBURR AND REMOVE SHARP EDGES; APPROX. 0.2x45 Deg.
  - GENERAL TOLERANSEC ACCORDING TO ISO 2768-m.
  - PASSIVATION TREATMENT PER AMS-2700 METHOD 1 TYPE 8
  - BAKE PART AFTER PLATING WITHIN 3 HOURS PER AMS-2759/9 TABLE 1 FOR 3 HOURS MINIMUM AT 191°C.
  - QUALITY ASSURANCE PROVISIONS:
  1. QUALITY ASSURANCE PROVISIONS FOR THIS ITEM PER RDMQD0012P.
  2. MAJOR CHARACTERISTICS NRS 101 TO 103. PARENTHEITICAL FIGURES ARE FOR REFERENCE ONLY.
  3. PACKAGING AND PACKING:
  4. THE FINISHED PART SHALL BE PRESERVED AND PACKAGED IN ACCORDANCE WITH MANUFACTURERS BEST COMMERCIAL PRACTICE.
  5. LABELING PER MIL-STD-130 PARA 4.1.B. BY LABELING ITS CONTAINER WITH THE PART NUMBER. CHARACTER MINIMUM TEXT HEIGHT 1.25 MM.

A

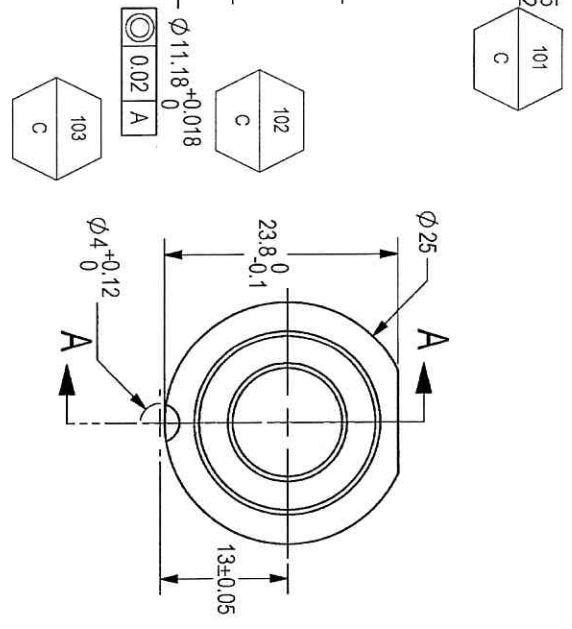


(WEIGHT: 0.034 Kg APPROX)

2



SECTION A-A



1.6 / (0.8)

SEE ATTACHED MEDIA

UNLESS OTHERWISE SPECIFIED		DIMENSIONS ARE IN MM PER ASME Y14.5M-1994		TOLERANCES		ANGULAR		1st ANGLE PROJECTION		SURFACE TEXTURE IN Micro METER	
DRAWN	CHECKED	HOS/DDO	SEE NOTE 5	SEE NOTE 5	SEE NOTE 5	OFFICER/PROD	OFFICER/QC	OFFICER/DDO	OFFICER/QC	PLM Control	
SIGNATURE	DATE	TITLE	SCALE	CAGE CODE	DWG NO	FOR: CRADLE MOBILE ASSY	OF: 12.7MM SRCG				
		ORDNANCE FACTORY TRUHIRAPPALLI	2:1	2291A	Y18946A-00						
		PROJECT OFFICER		PLM Control		SHEET 1 OF 1					

30.11.2020

Handwritten signature and notes.

1

B

A