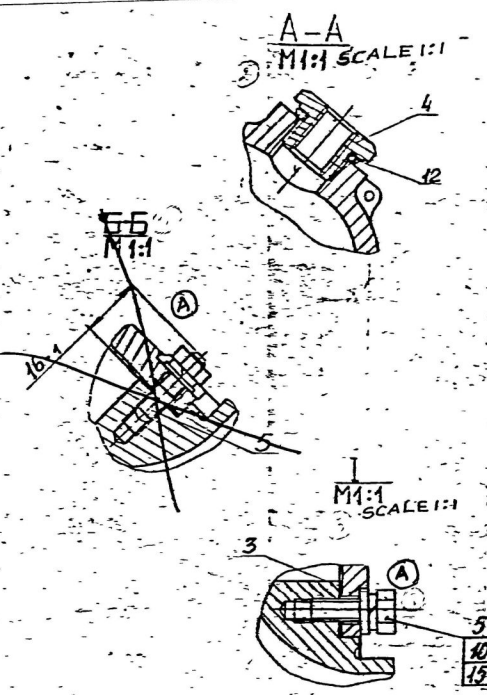
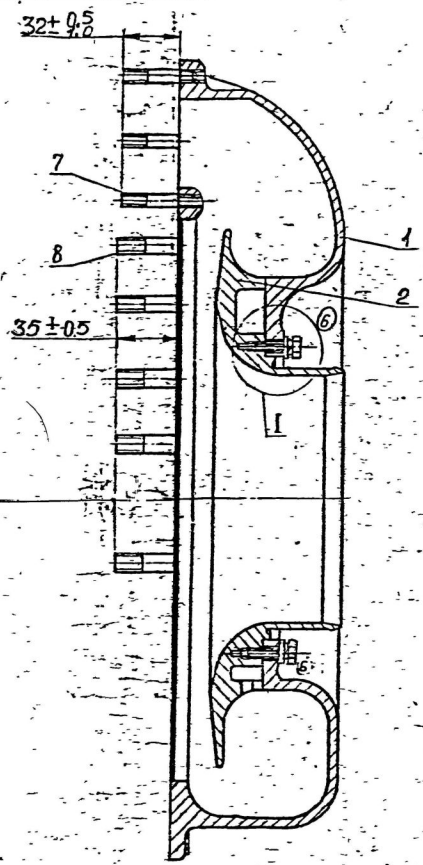
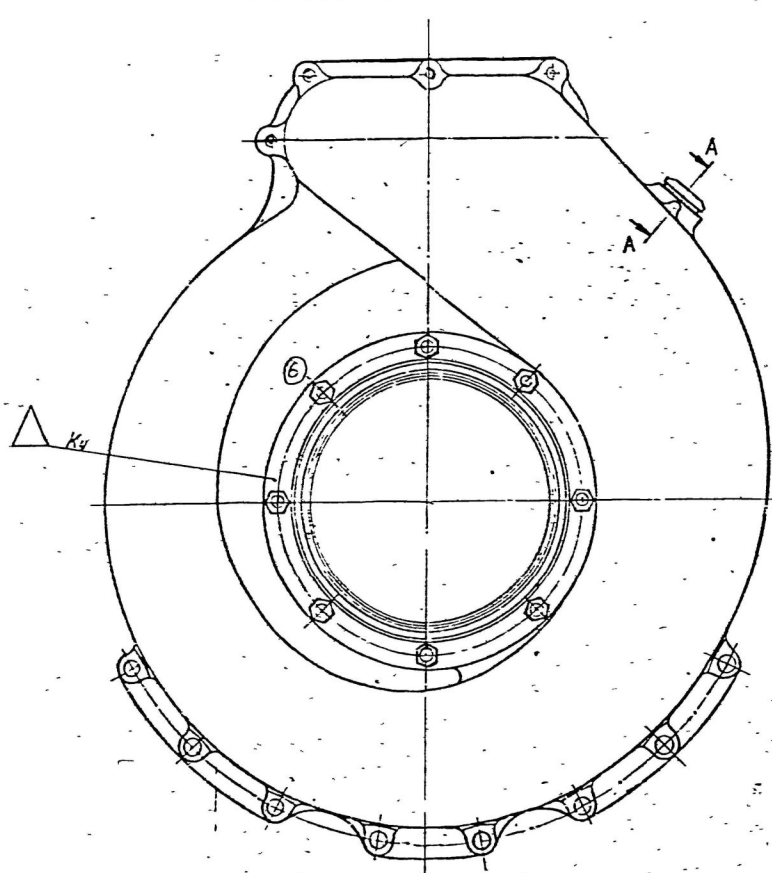


DRAWING NUMBER
C63338-404-7



NOTE:

① FOR ASSEMBLY UNIT IN TROPICAL DESIGN, COMPONENTS HAVING CONVENTIONAL DESIGNATION 'TU' IN THE PARTS LIST OF GIVEN DRAWING IN COLUMN 'REMARKS' SHOULD HAVE TROPICAL DESIGN SPECIFIED IN THE COMPONENT DRAWINGS.

PL.OT SAMPLE SHOULD BE APPROVED BY A H S P BEFORE BULK PRODUCTION.

EST. WT. 8,5 kg	TO BE STAMPED OR MARKED WHERE INDICATED THIS (LETTERS)
ALL SHARP EDGES AND CORNERS TO BE REMOVED UNLESS OTHERWISE STATED MACHINED CORNERS TO HAVE R OUTSIDE R INSIDE.EQUIVALENT CHAMFERS ARE PERMISSIBLE	

DRN	<i>[Signature]</i>	MATERIAL	USED ON
CHD	<i>[Signature]</i>		C63338-401-10
TCD	<i>[Signature]</i>	CONTROLLERATE OF QUALITY ASSURANCE (HEAVY VEHICLES)	
APPD	<i>[Signature]</i>	A V A D I	
DATE	11-4-95	TITLE: VOLUTE WITH DISC ASSY	
SCALE	1:2	D S CAT NUMBER	
DIMENSIONS in mm		DRAWING NUMBER	
TOLERANCE ON DIMNS UNLESS OTHERWISE STATED IS 2102-69		C63338-404-7	
ALL THREADS TO CONFORM TO			
A	25-4-95	NATURE OF AMENDMENTS	
ISSUE	DATE		

RECEIVED VIDE NOTING BK 87-724

SIZE A2

USED ON

CB 3338-404-10

ITEM	DRAWING NUMBER	D.S. CAT NUMBER	DESCRIPTION	No. OFF	REMARKS
	CB 3338-404-7 & ITEM LIST		VOLUTE WITH DISC ASSY		
(A) 1	3338-422-1(2 SHTS) ✓		VOLUTE	1	TROPICAL MAKE
2	3338-423-5 ✓		VOLUTE DISC	1	
3	3338-479 ✓		BRANCH PIPE GASKET	1	
(A) 4	301-106-1 ✓		BUSH	1	TROPICAL MAKE
(A) 5	356-84-1 ✓		BOLT M6 X 20	8	
7	350-33-2 ✓		STUD M6 X 45	8	
8	350-37 ✓		STUD M8 X 51	10	
(A) 9	-				
10	353-04-1 ✓		BRIGHT WASHER 6	8	TROPICAL MAKE
12	355-08 ✓		RING 18 X 24	1	
15	353-23 ✓		WASHER 6T 65Γ06 GOST 6402-70	8	PL SEE EXPL- ANATORY NOTE IN ASSY. TROPICAL MAKE

A 25.4.95 AUTH. NOTN No. BK 86-190 & 87-724

ISSUE	DATE	NATURE OF AMENDMENTS	ISSUE	DATE	NATURE OF AMENDMENTS
-------	------	----------------------	-------	------	----------------------

DRN. *Abia* CONTROLLERATE OF QUALITY ASSURANCE (HEAVY VEHICLES) AVADI

CHD. *m*

TCD. *Abia* TITLE: **VOLUTE WITH DISC ASSY**

APPD. *[Signature]*

DATE 28-4-95

SHt. No. 1 OF 1

D S CAT NUMBER

ITEM LIST FOR **CB 3338-404-7**

