

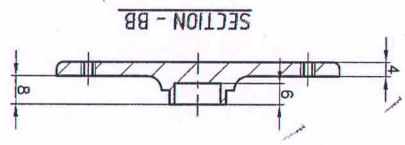
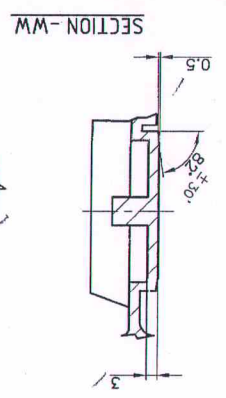
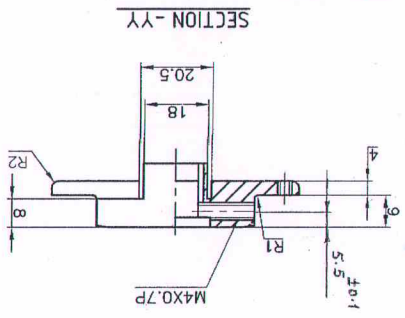
OIL FINISH
 JSS:0465 - 01 - 1988 CLASS 1
 PROTECTIVE FINISH : PHOSPHATED TO SPEC.

HARDNESS: 24 - 32 HRC
 MATERIAL : 0XHM3A-0-90. (GOST B 5192=78) OR BS: 970, PART-1, 1983 - 817M40

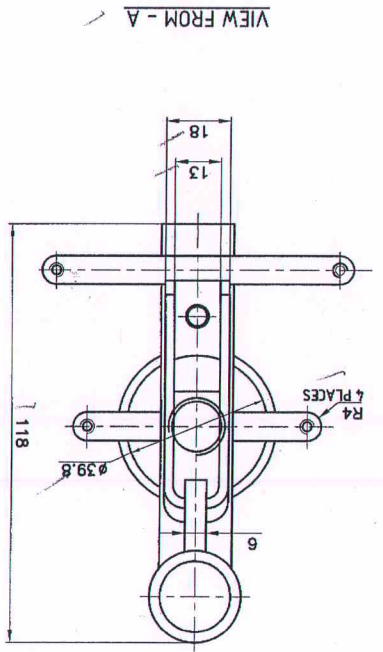
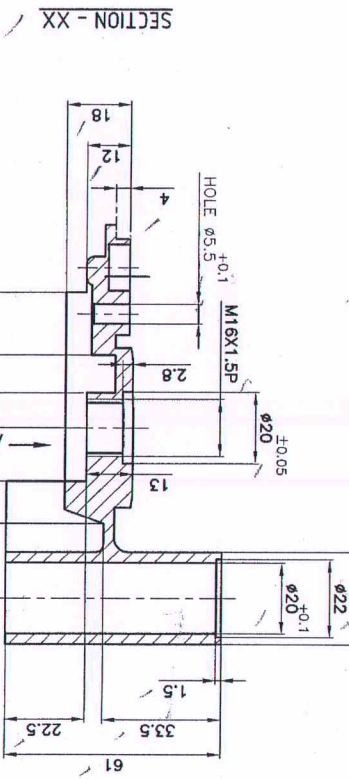
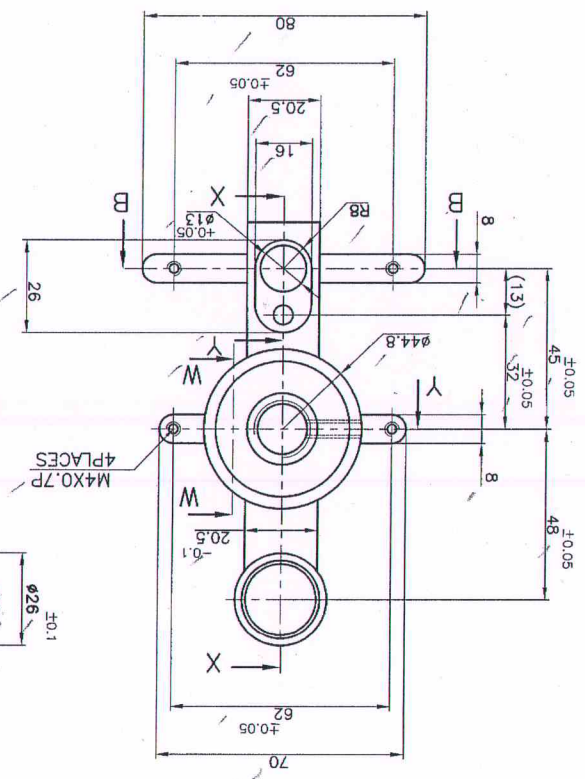
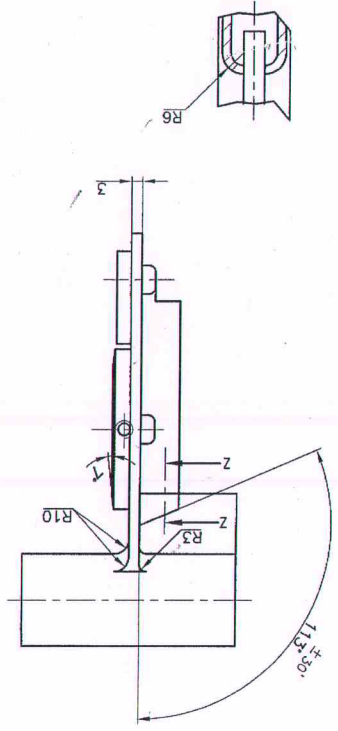
DIMENSIONS ARE IN mm.
 UNTOLERATED DIMNS. AS PER IS : 2102 (MED)
 SHARP CORNERS SHOULD BE PLUNED TO R0.5

UN CONTROLLED COPY
 CERTIFIED CORRECT COPY OF APPROVED
 DRAWINGS AT THIS DATE 11/08/23
 J. Kumar 13/12
 DESIGN & DRAWING OFFICE,
 ORDNANCE FACTORY, THIRUCHIRAPPALI-620 016

SHEET No.: 1		SHEETS: 1		ORDNANCE FACTORY THIRUCHIRAPPALI-16	
OPERATION NO.		DRG. No.: 30P 3011*		DA. No.: 91/11	
STORE DRGNO.		DES. REF. NO.		HOS/DADO	
SCALE 1 : 1		SUB: REAR CROSS		CHECKED	
REMARKS		MATERIAL		DRAWN	
TREATMENT		NO OFF		DATE	
SIGNATURE & DATE		FOR: 40mm MGL		APPROVED ON 25/02/2015	
DESCRIPTIONS		FOR: REAR FRAME ASSY		SIG. DATE	
PART NO.		TRACED		MOM. CHECKED	
APPROVED		FOR MGL		DATE	
APPROVED ON 25/02/2015		DATE		APPROVED ON 25/02/2015	



SECTION - ZZ



VIEW FROM - A