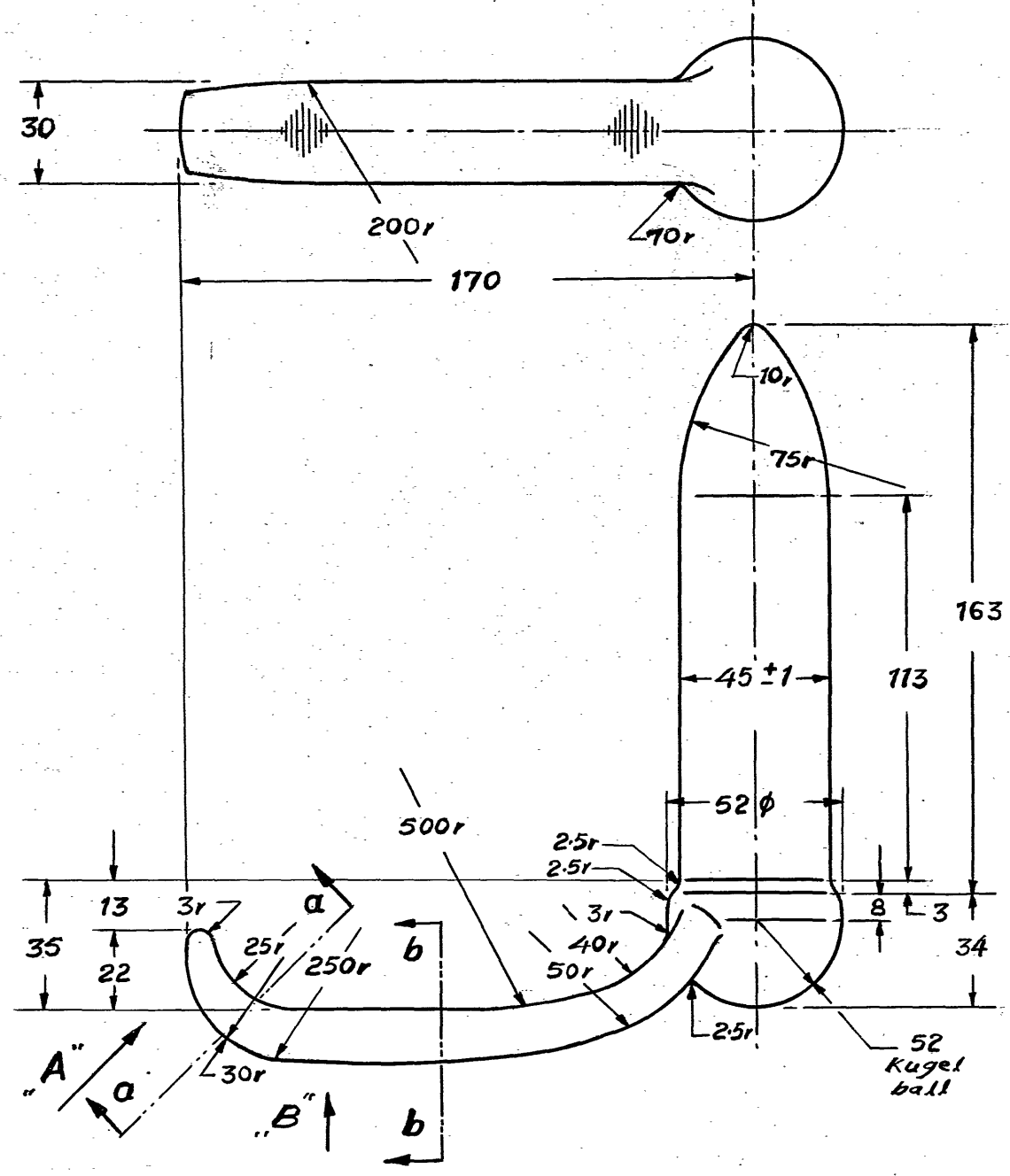


Ansicht "B"  
Elevation "B"



AMENDMENTS	
D. C. (I.)	NATURE
ES/14/14 DT.19-1-71	DRAWING PROVISIONALLY SEALED. <i>J.M.</i> J.S.01
ES/14/316 DT 3/5/99	SPEC DIN 17200 ADDED IN MATL COLUMN.ALTERNATIVE MATL SPEC ADDED. DRG NO ADVANCED TO/A <i>J.M.</i> ACQA (FE)

ALTERNATIVE MATL  
EN-43D OR EN-11  
AS PER BS: 970

1. Material: C60 heat treated to 90kg/mm<sup>2</sup> tensile strength
  2. Yield point: 44 kg/mm<sup>2</sup>; Elongation: 15% Longitudinal
  3. Notch-impact strength: 7mkJ/cm<sup>2</sup> at +20°
  4. Sample according to DVM DIN 50115 Longitudinal.
1. Werkstoff: C60 vergütet auf 90kg/mm<sup>2</sup> Zugfestigkeit
  2. Streckgrenze: 44kg/mm<sup>2</sup>; Bruchdehnung: 15% Längs
  3. Kerbschlagzähigkeit: 7mkJ/cm<sup>2</sup> bei +20°
  4. Probe nach DVM DIN 50115 Längs  
Schmiedegrade sauber abschleifen  
Grind off forging burrs neatly.

Pos. 28  
Item

geprüft  
sdl-  
25-4-67

Scale Maßstab	Material: C60 V90 DIN 17200	Absteckbolzen-Rohrteil, geschmiedet Connecting pin-semi-finished, forged	Cat. No. Katalog 1429
------------------	-----------------------------------	---	-----------------------------