

2068

7490314211

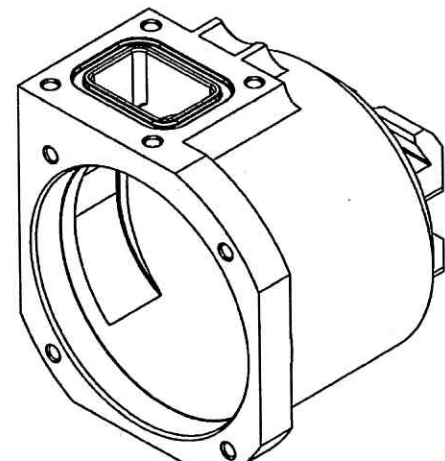
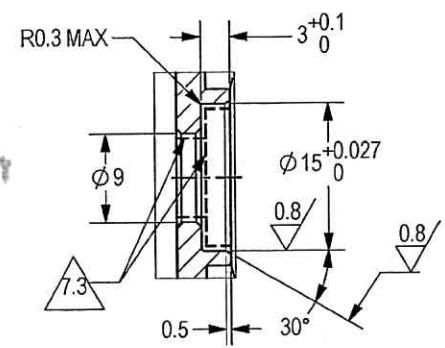
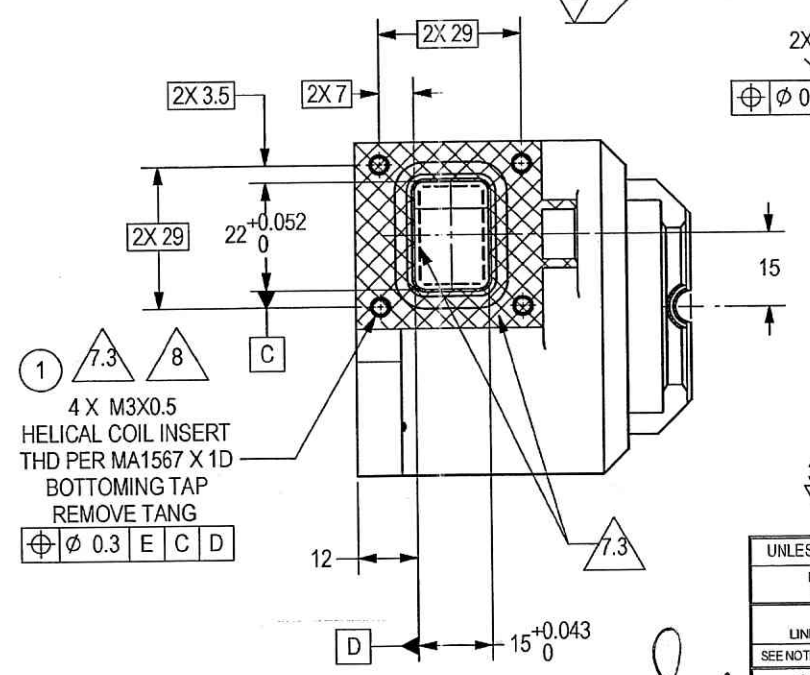
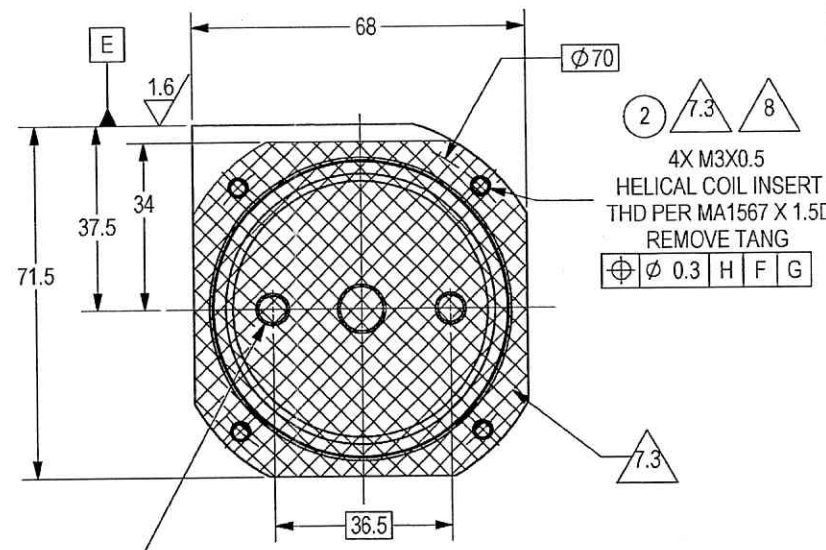
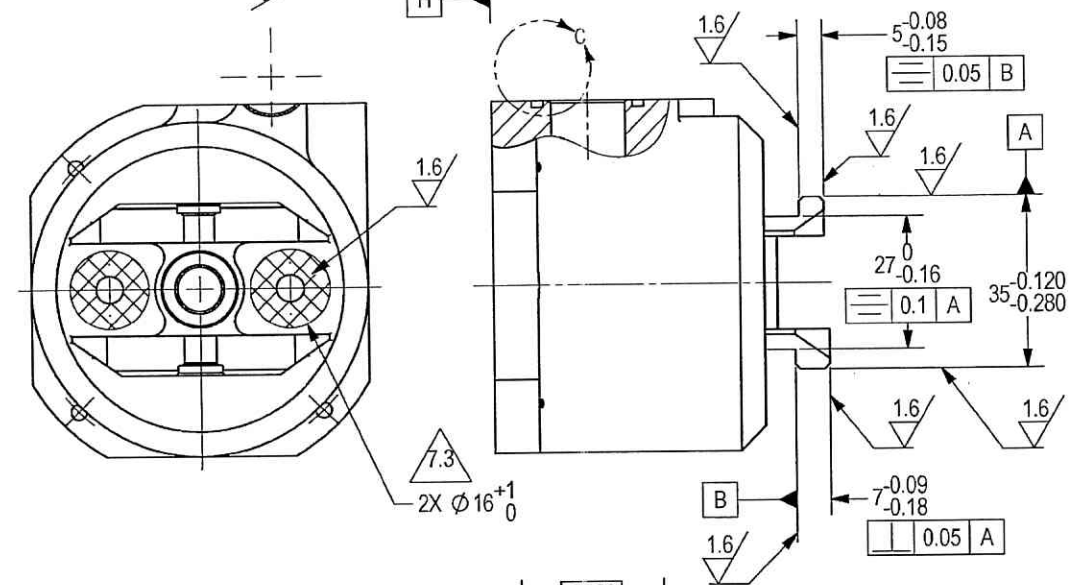
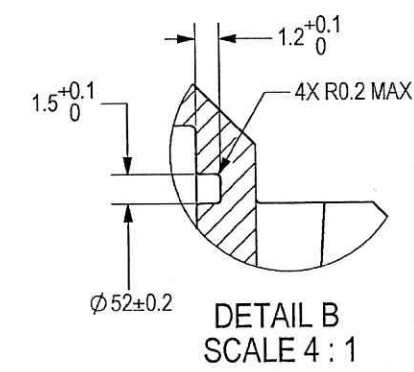
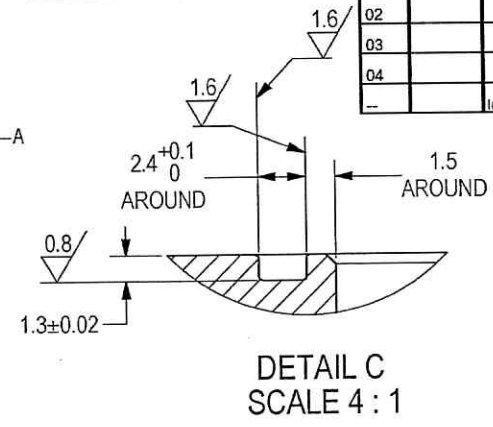
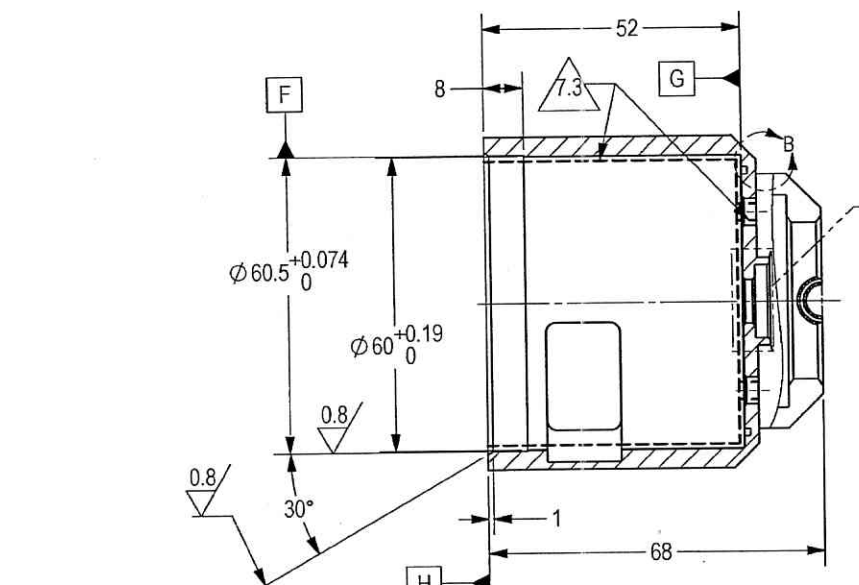
THIS DOCUMENT AND THE INFORMATION CONTAINED IN IT ARE PROPRIETARY AND CONFIDENTIAL TO OFT. NO PERSON OR ENTITY IS ALLOWED TO COPY, REPRINT, REPRODUCE OR PUBLISH ANY PART OF THIS DOCUMENT, NOR DISCLOSE ITS CONTENTS TO OTHERS, NOR MAKE ANY USE OF IT, NOR ALLOW OR ASSIST OTHERS TO MAKE ANY USE OF IT UNLESS BY THE PRIOR WRITTEN EXPRESS AUTHORIZATION OF OFT AND THEN ONLY TO THE EXTENT AUTHORIZED. COPYRIGHT-OFT.

NOTES:

- INTERPRET THIS DRAWING IAW ASME Y14.100M.
- MATERIAL: ALUM. ALLOY BAR 6061-T6 PER AMS-QQ-A-250/8 OR ALUM. ALLOY PLATE 6061-T651 PER AMS-QQ-A-250/11.
- UNLESS OTHERWISE SPECIFIED, UNDEFINED MACHINED FILLET RADII SHALL BE 0.2..0.3.
- DEBURR AND REMOVE SHARP EDGES, APPROX. 0.2X45 Deg.
- ALL DIMENSIONS ARE BEFORE COATING.
- GENERAL TOLERANCES ACCORDING TO ISO 2768-m.
- FINISH:
 - CHEMICAL CONVERSION COATING PER MIL-DTL-5541F TYPE I CLASS 3.
 - ANODIC COATING PER MIL-A-8625 TYPE III WITH PTFE, 50 ± 5 MICRON THICK CLASS 2, COLOR BLACK #37038 PER FED-STD-595.
- SURFACES DEFINED BY AND AND THREADS SHALL BE PROTECTED AGAINST ANODIC COATING.
- INSTALL INSERTS AFTER FINISH PER MS33537 USING PRIMER EPOXY PER MIL-P-53022.
- QUALITY ASSURANCE PROVISIONS:
 - QUALITY ASSURANCE PROVISIONS FOR THIS ITEM PER RDMQD00012P.
- PARENTHETICAL FIGURES ARE FOR REFERENCE ONLY.
- PACKAGING AND PACKING: THE FINISHED PART SHALL BE PRESERVED AND PACKAGED IN ACCORDANCE WITH MANUFACTURER'S BEST COMMERCIAL PRACTICE.
- IDENTIFY PER MIL-STD-130 PARA 4.1.B, BY LABELING ITS CONTAINER WITH THE PART NUMBER. CHARACTERS MINIMUM TEXT HEIGHT 1.25 MM.

SHEET REV STATUS
ALL SHEETS ARE THE SAME REVISION

REVISION RECORD				
REV	ECO	DESCRIPTION	DATE	APVD
01		Freeze	25-Feb-14	M. Levin
02		Freeze	24-Apr-14	M. Levin
03		Freeze	11-May-14	E. Reshef
04		Restricted	23-Jul-14	L. Goldshtein
-		Identical To Previous	09-Apr-18	L. Goldshtein



(WEIGHT: 0.19 Kg APPROX.)

UN CONTROLLED COPY

CERTIFIED CORRECT COPY OF APPROVED DRAWINGS AT THIS DATE 01-01-2021

Design & Drawing Office
Ordnance Factory,
Tiruchirappalli-620016

UNLESS OTHERWISE SPECIFIED		SIGNATURE	DATE	ORDNANCE FACTORY TIRUCHIRAPPALLI	
DIMENSIONS ARE IN MM PER ASME Y14.5 - 2009		DRAWN	17/11/21	FOR: SOLENOID SHOT ASSY	
TOLERANCES		CHECKED		TITLE HOUSING SOLENOID	
LINEAR	ANGULAR	HOS/DDO		OF: 12.7MM SRCG	
SEE NOTE 6	SEE NOTE 6	OFFICER/PRODN		SIZE	CAGE CODE
1st ANGLE PROJECTION		OFFICER/QC		C	2291A
		OFFICER/DDO		DWG NO	081101A-00
PROJECT OFFICER	SURFACE TEXTURE IN Micro METER			SCALE	1:1
				AUTOMATED DRAWING (SW)	YES
				SHEET	1 OF 1
				PLM CONTROL	

DWG NO 081101A-00

SH 1

A

PLM Control

OFT

ASSEMBLY PARTS LIST

Assembly Parts List For: 081101A-00

Rev: -


Status:

Description: HOUSING SOLENOID

FN	CMD	PART NUM	ECO	DESCRIPTION	MB	QTY	U/M	REF. DES./REMARKS	MFG. PN / CUSTOMER	LA	LI
1	HM	99662212M		INSERT HCOIL CRES M3X1D	P	4	Each		60043-TNM3X0.5C-3(SEE NOTES)		
2	HM	99662213M		INSERT HCOIL CRES M3X1.5D	P	4	Each		60043-TNM3X0.5C-4.5(SEE NOTES)		

UN CONTROLLED COPY

CERTIFIED CORRECT COPY
OF APPROVED DRAWINGS
AT THIS DATE 01.01.2024


Design & Drawing Office
Ordnance Factory,
Crowthorne, RG20 9AT