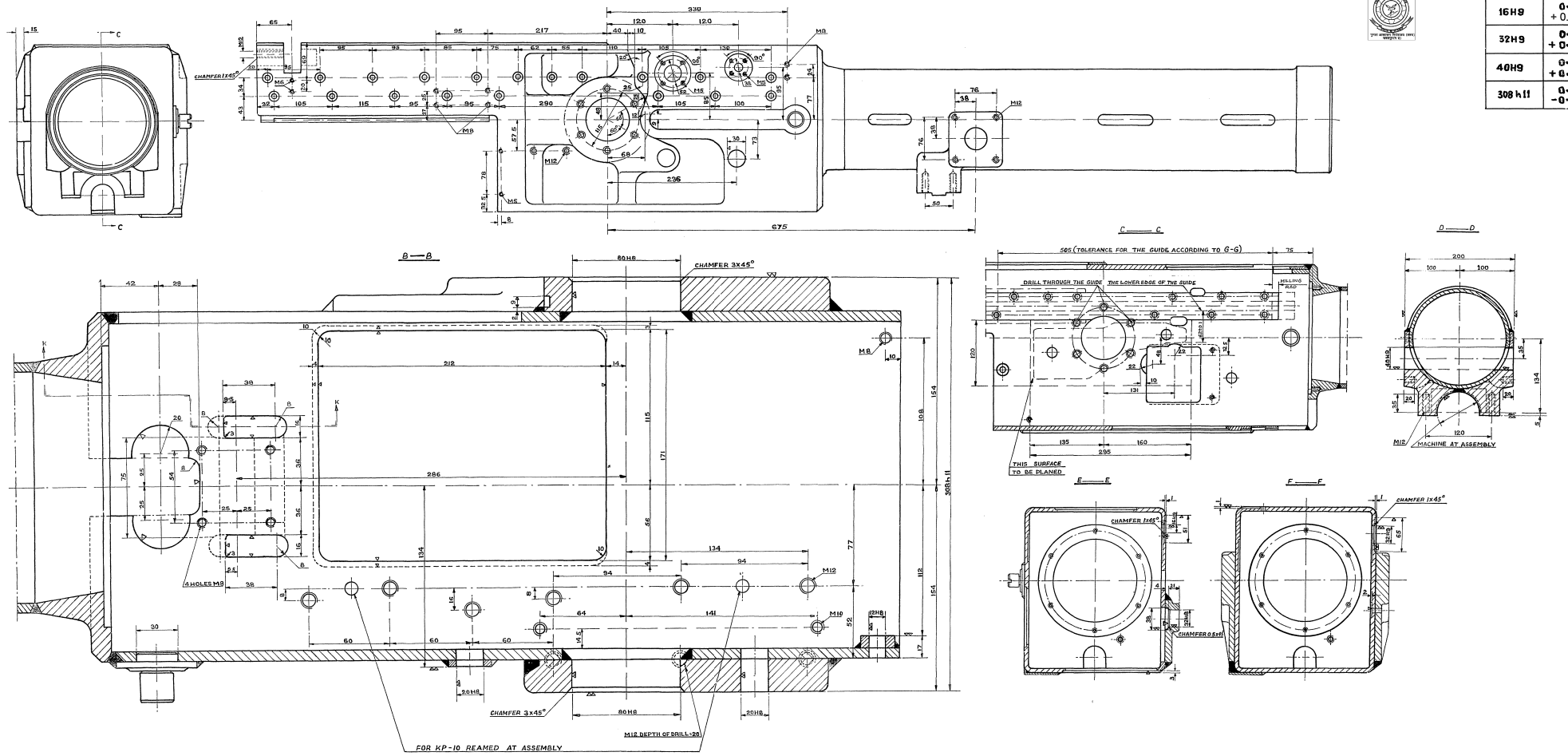


PART No. IAN 357
 5 SHTS SHT 1

FOR EXPLANATION OF DIMENSIONING ETC. SEE C1 ARM NOTE SHEET No 1
 DIMENSIONS ARE IN mm

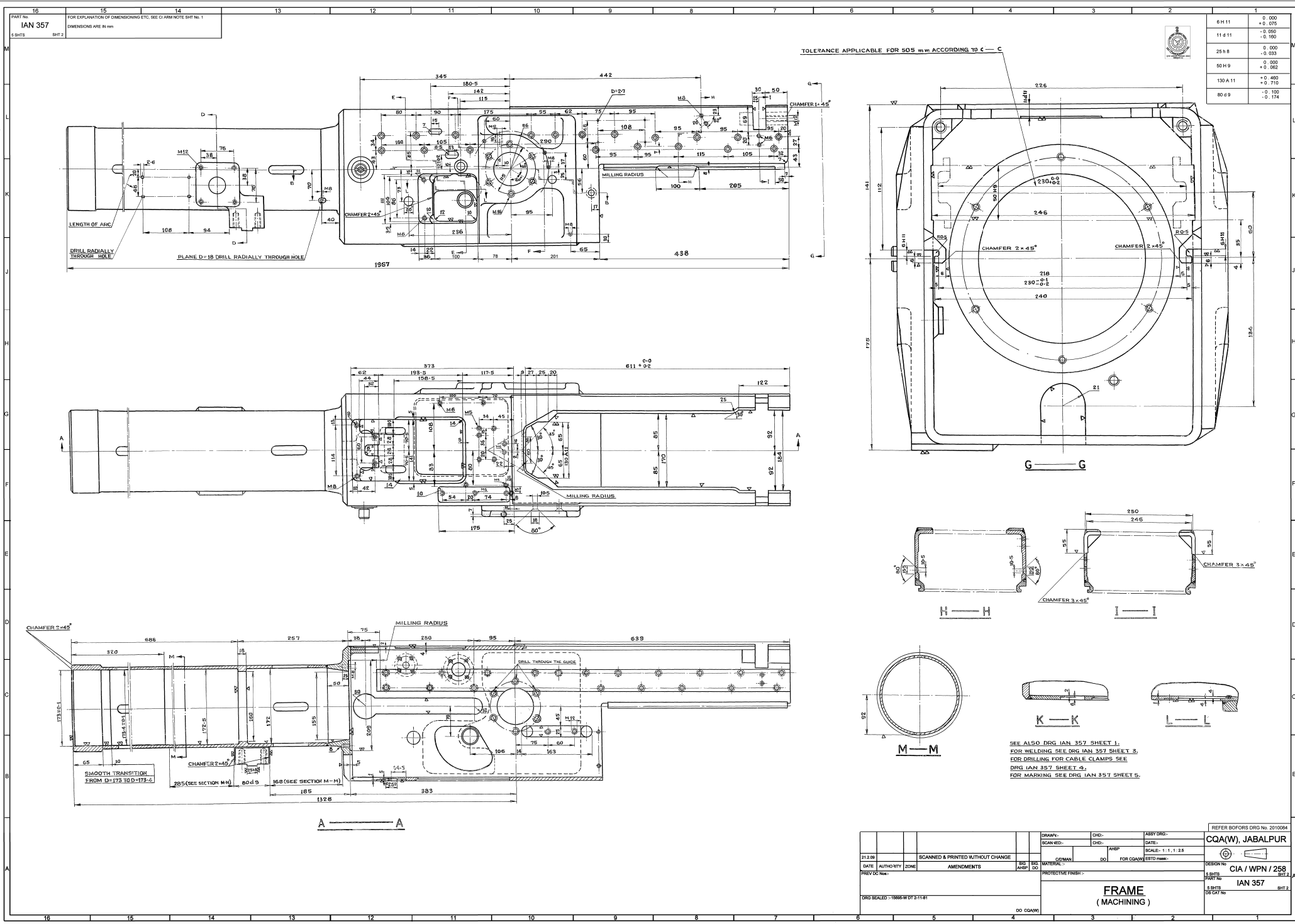
TOLERANCE	DEVIATIONS
12H8	0-000 +0-027
20H8	0-000 +0-033
32H8	0-000 +0-039
80H8	0-000 +0-046
16H9	0-000 +0-043
32H9	0-000 +0-062
40H9	0-000 +0-062
30H11	0-000 -0-320



SEE ALSO DRG. No. IAN 357 SHT 2
 FOR WELDING SEE DRG No. IAN 357 SHT 3
 FOR DRILLING FOR CABLE CLAMPS, SEE DRG No. IAN 357, SHT 4
 FOR MARKING SEE DRG No. IAN 357, SHT 5

BASED ON BOFORS DRG No. 2009332

SCANNED & PRINTED WITHOUT CHANGE			DRAWN:-		CHD.-	ASSY DRG.-	CQA(W), JABALPUR
DATE	AUTHORITY	ZONE	SIG AHSP	SIG DO	SCANNED:- MK	CHD.-	
PREV DC Nos:-	AMENDMENTS		MATERIAL:-		C13MAN	DO	SCALE:-
DRG SEALED- 15695-W DATED 02-11-81			PROTECTIVE FINISH:-		FOR CQA(W)		ESTD mass:-
				FRAME (MACHINING)			DESIGN No. 5 SHTS
							CIA / WPN / 258 SHT 1
							PART No. IAN 357
							5 SHTS SHT 1
							DS CAT No.



TOLERANCE APPLICABLE FOR 80S mm ACCORDING TO C — C

0H11	0.000
	+0.075
11 d 11	-0.050
	-0.100
25H8	0.000
	+0.033
50H9	0.000
	+0.062
130A 11	+0.450
	+3.770
80d9	-0.100
	-0.174

SEE ALSO DRG IAN 357 SHEET 1;
 FOR WELDING SEE DRG IAN 357 SHEET 2;
 FOR DRILLING FOR CABLE CLAMPS SEE
 DRG IAN 357 SHEET 4;
 FOR MARKING SEE DRG IAN 357 SHEET 5.

31.24	31.24	31.24	31.24	31.24	31.24	31.24	31.24	31.24	31.24	31.24	31.24	31.24	31.24	31.24	31.24
DRAWN-						CHK-		ASBY DRG-		REFER BOPORS DRG No. 2010054					
SCANNED & PRINTED WITHOUT CHANGE						DATE:		CQA(W), JABALPUR							
AUTHORITY ZONE				AMENDMENTS		MSP		SCALE: -1:1:25		DESIGN NO. CIA / WPN / 258					
PREV DC No-				MATERIAL		FOR QA/WN		ESTD / mm-c		SHEET NO. IAN 357					
DRG BEALE-1886WD 21141				PROTECTIVE FINISH-		DO QA/WN		DR CAT No		SHEET 2 OF CAT No					
FRAME (MACHINING)															