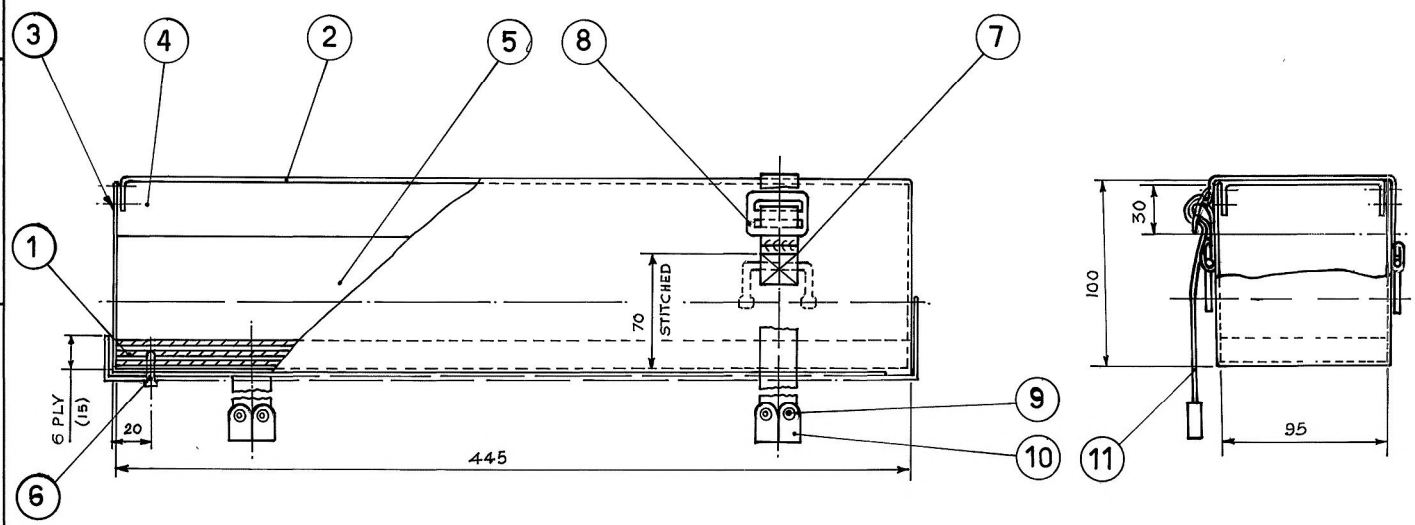


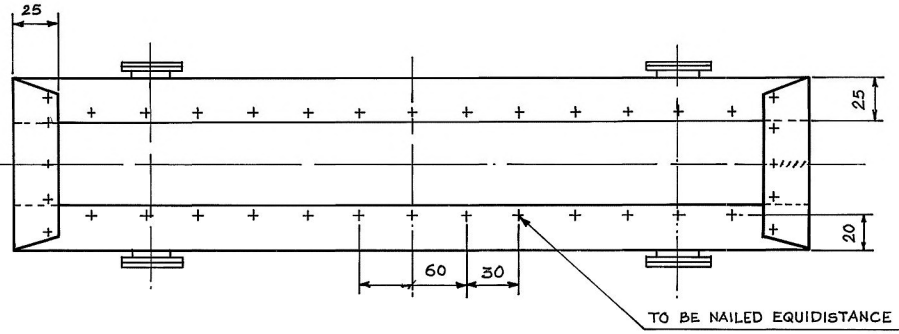
D.S. CAT No. **2540-002308**

FOR EXPLANATION OF DIMENSIONING ETC. SEE ARDE NOTE SHT No 1
DIMNS. ARE IN mm UNLESS OTHERWISE STATED.





DET No.	NOMENCLATURE	MATERIAL	SIZE	No. OFF
1	BOTTOM PIECE	MARINE PLYWOOD 6 PLY TO SPEC. IS: 710	AS SHOWN	1
2	TOP COVER	COTTON DUCK 610 gm/m ² (VARIETY No. 2) O.G., W.P. TO IS: 1422-1983 FOLLOWED BY SPECIAL WATER-PROOFING AND TESTS TO IS: 6805-1972, SCHEDULE No. TC-11A/7	125 X 475 LONG	1
3	SIDE COVER		14.5 X 1100 LONG	1
4	SPONGE PAD	SPONGE RUBBER VULCANISED TYPE A IND/ME 645 (a)	4.45 X 95 X 30 THICK	1
5	COIR	—	—	—
6	NAIL COMMON	MILD STEEL IS: 723	1.60 φ X 15 LONG	36
7	WEB STRAP	OG. THICK TO SPEC. No. IS: 6488	25 WIDE X 200 LONG	2
8	BUCKLE	BUCKLE, BRASS, Q.R. 25 mm. CAT No M3/8315-000035, OR COMMERCIAL		2
9	EYELET	EYELET (WEB EQUIPMENT PATTERN) METALLIC BRASS (CN/5325-000160) TO SPECN. IS: 6021 OR COMMERCIAL		4
10	TIP	TIP, BRASS 25 mm CAT No. CN/8315-000061 OR COMMERCIAL		2
11	WEB STRAP	OG THICK TO SPEC. No. IS: 6488	25 WIDE X 300 LONG	2

NOTE:-
3 mm PER STITCH WITH THREAD SEWING COTTON
VARIETY No 37 TO SPECN No IS: 1720.



TO BE STENCILLED ON OUTSIDE IN BLACK INK
SEAT, GUN, LAYER, SMALL, IA
No. 1015-000959

*  **CONTRACTOR'S INITIALS**
LETTER'S AND FIGURES 19 HIGH

 **MARK AND YEAR OF SUPPLY**

24 12 03	18840-W	F/1-3	UNDER COLUMN MATERIAL ITEM No 8,9,10, NOMENCLATURE AND D S CAT No AMENDED.		
12 11 03	18819-W		HINDI NOMEN ADDED		
22-1-02			RETRACED WITHOUT CHANGE		
			PREV. DC (1) Nos:- 15962-W, 16392-W & 18525-W DT. 24-6-1999		
DATE	AUTHORITY	ZONE	NATURE	SIG AHSP	SIG DO
			AMENDMENTS		
DRG SEALED:- 16392-W			DO CQA (W)		
			31-12-85		

DRN:-	CHD:-	ASSY DRG:-
TCD:- J. L. C	CHD:- A S JHA	DATE:- 26-3-1972
c/d MAN	DO	SCALE:- 1:2
MATERIAL:- AS SPECIFIED		ESTD mark:-
PROTECTIVE FINISH:-		

CQA(W) JABALPUR
DESIGN No D6P-TA-7214
PART No. ICM-1646
D.S. CAT No 2540-002308

कुशन सीट वेहिकूलर
CUSHION SEAT VEHICULAR