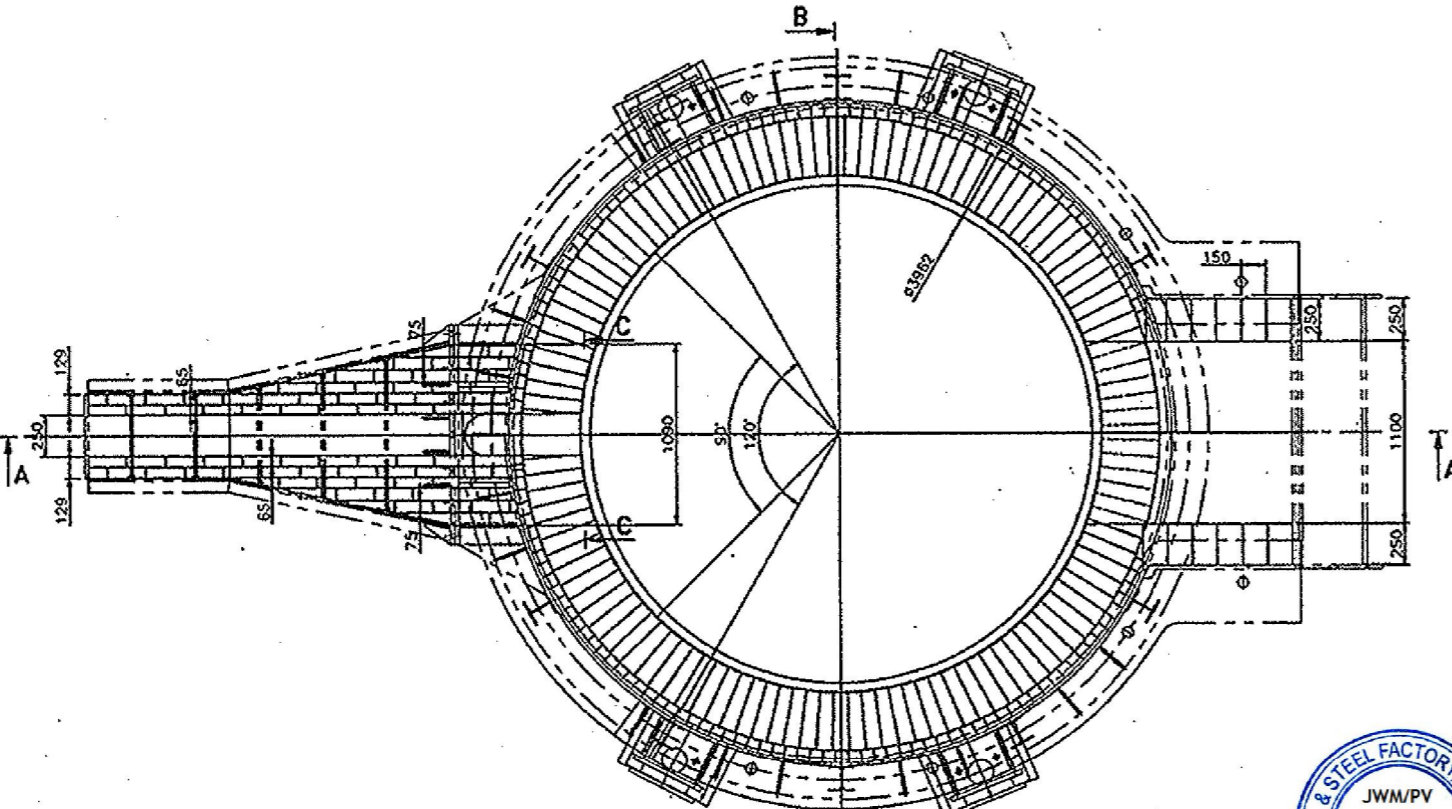
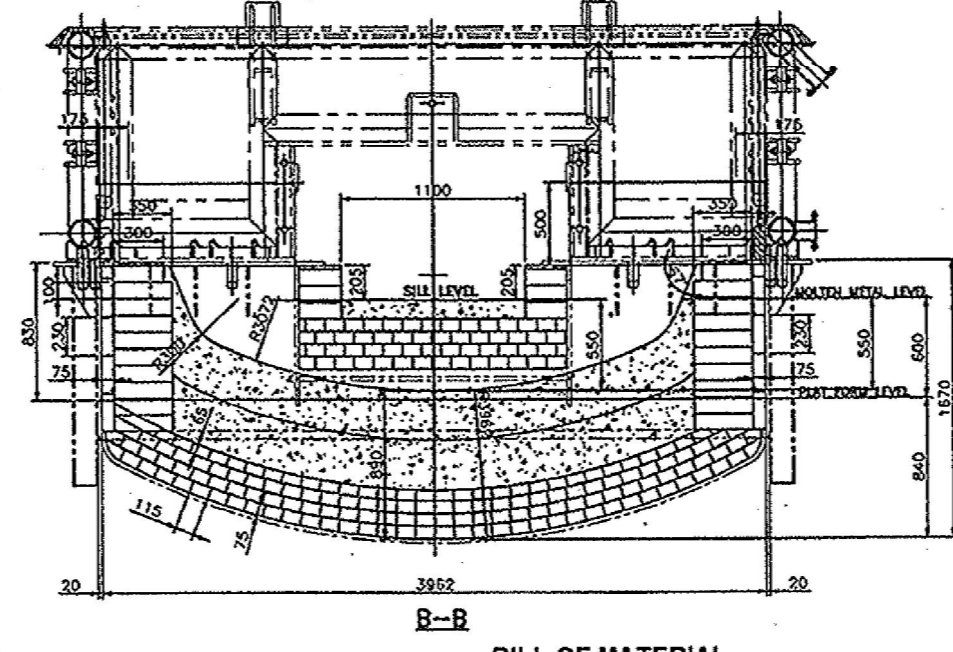
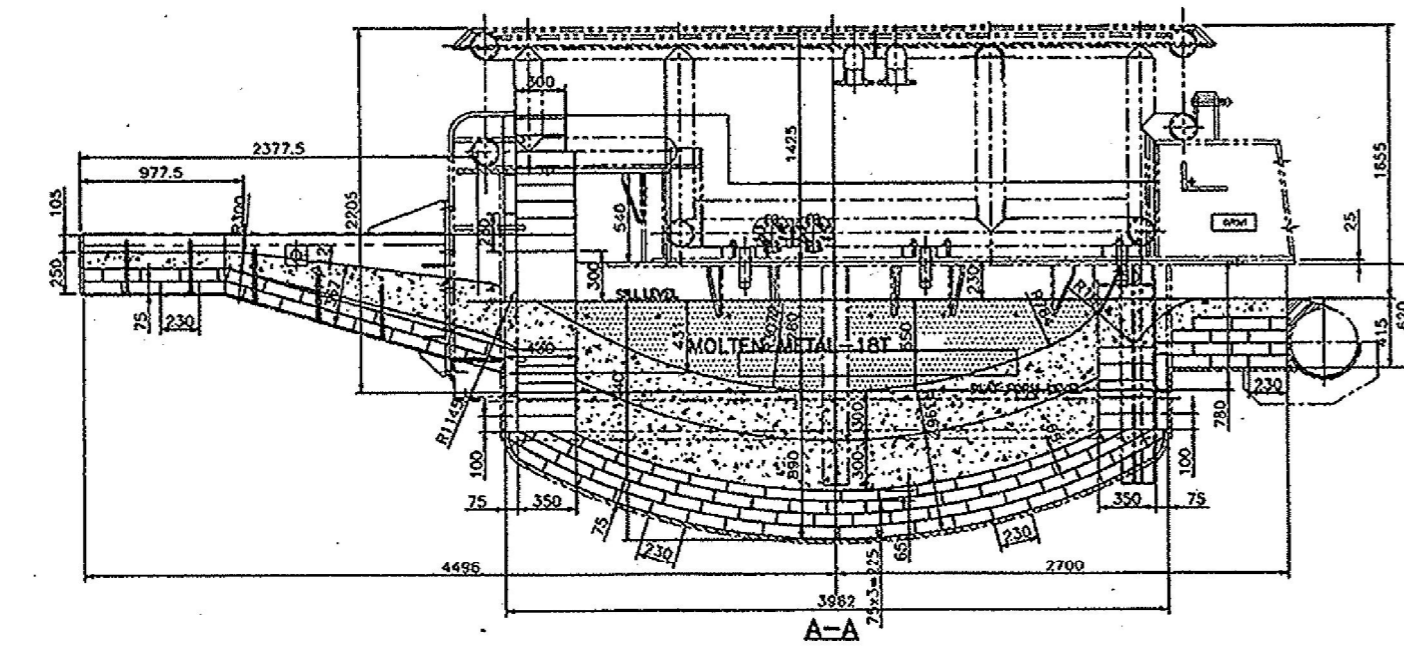


ALL DIMENSIONS ARE IN mm



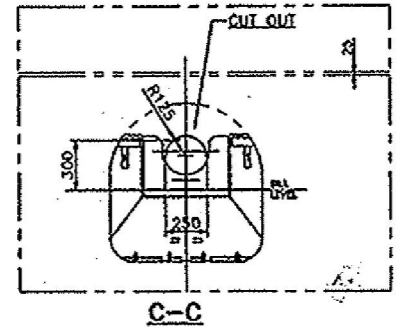
BILL OF MATERIAL

SL NO	LOCATION	BRICK SIZE IN MM	TOTAL NO. OF BRICKS	MSF SPECIFICATION	DETAIL SPECIFICATION	MARKING ON BRICKS
01	BELOW SLAG ZONE	350X170/130X100 KEY	286	20 ARC/ MAG.CARB	BD=2.8 TO 2.84 gm/cc, AP= 3.6% max. CCS=350-500 kg/cm2, HMOR at 1400 deg.C=15-25 kg/cm2, RUL=1700 deg.C, Cooked AP at 1000 deg. C/2 hrs=13-16 %, Cooked BD at 1000 deg. C/2 hrs=2.7 to 2.75 gm/cc. MgO= 90% min Al2O3=4% min. Fixed carbon 18-20% Size tolerance: +/- 1.5% or 2 mm whichever is greater.	BSZ
02		350X154/146X100 KEY	123			BSZ
03		350X170/130X100 KEY	286			SZ
04	SLAG ZONE	350X154/146X100 KEY	123			SZ
05		350X170/130X100 KEY	102			ASZ
06	ABOVE SLAG ZONE	350X154/146X100 KEY	83			ASZ
07	BACK	230X115X75 STR	605	20 ARC/ MGT	MgO=85% min, SiO2=6.5% min, CaO=2.5% min, AP=22% max, CCS=350 kg/cm2 min. RUL=1550 deg. C min. PCE=SK 38 min. Size tolerances +/- 1.5% or 2 mm whichever is greater. AP & CCS average of 5 results.	MGT
08	DOOR BASE	230X115X75 STR	235			MGT
09	DOOR WALL	250X150X100 STR	41			MGT
10	SPOUT BASE	230X115X75 STR	170			MGT
11	SPOUT WALL	230X115X75 STR	148			MGT
12	MORTAR		700 KGS	MAG. POWDER	MgO=95% min. SiO2=1.5 % max.	
13	RAMMING MASS		10600 KGS	MAGNESITE RAMMING MASS	MgO - 85% Min SiO2-8% Max, Al2O3-6% Max. CaO-3% Max, Fe2O3-2.5% Max S -0.030% Max., P-0.020% Max., L.O.I-1.2% Max., Moisture-1.3% Max., Size: 1- 5 mm.(50%), 0.5-2 mm (40%), Rest(10%) fines.	



LINING DIMENSION FLOWED THE SHELL TOP LEVEL.

SPECIFICATION OF BRICKS :
 HEARTH - HIGH GRADE MAGNESITE DRY RAMMING MASS FOR COMPLETE HEARTH AREA INCLUDING EXTENSION OVER STANDARD MAGNESITE BRICK FOR HEARTH.
 SLAG LINE - MAGNESIA CARBON BRICK WITH HIGH GRADE MAGNESIA SINTER.
 SIDE WALL - SAME AS HEARTH RAMMING MASS.



AMENDMENTS				
INDEX			DATE	NAME
<p>BRICK LINING ARRANGEMENT FOR 20/22 TON EAF</p> <p>(BASED ON SUPPLIED SKETCH)</p> <p>METAL & STEEL FACTORY, ISHAPORE</p>			SCALE	DRAWN 27/07/2015 S.K.Pramanik
<p>CLEANING </p> <p>ROUGHING </p> <p>SMOOTHING </p> <p>FINISHING </p>			NTS	APPROVED
			HOS/DO'	WM/QC
			ORG. NO. 15 ARC/1000/192	

11-05-15
 AWM/SMR

11/8/15
 HOS/SMR