

ASHOK  
LEYLAND

FIRST ANGLE PROJECTION

SURFACE FINISH AS PER IS:3073. (CLA VALUE)

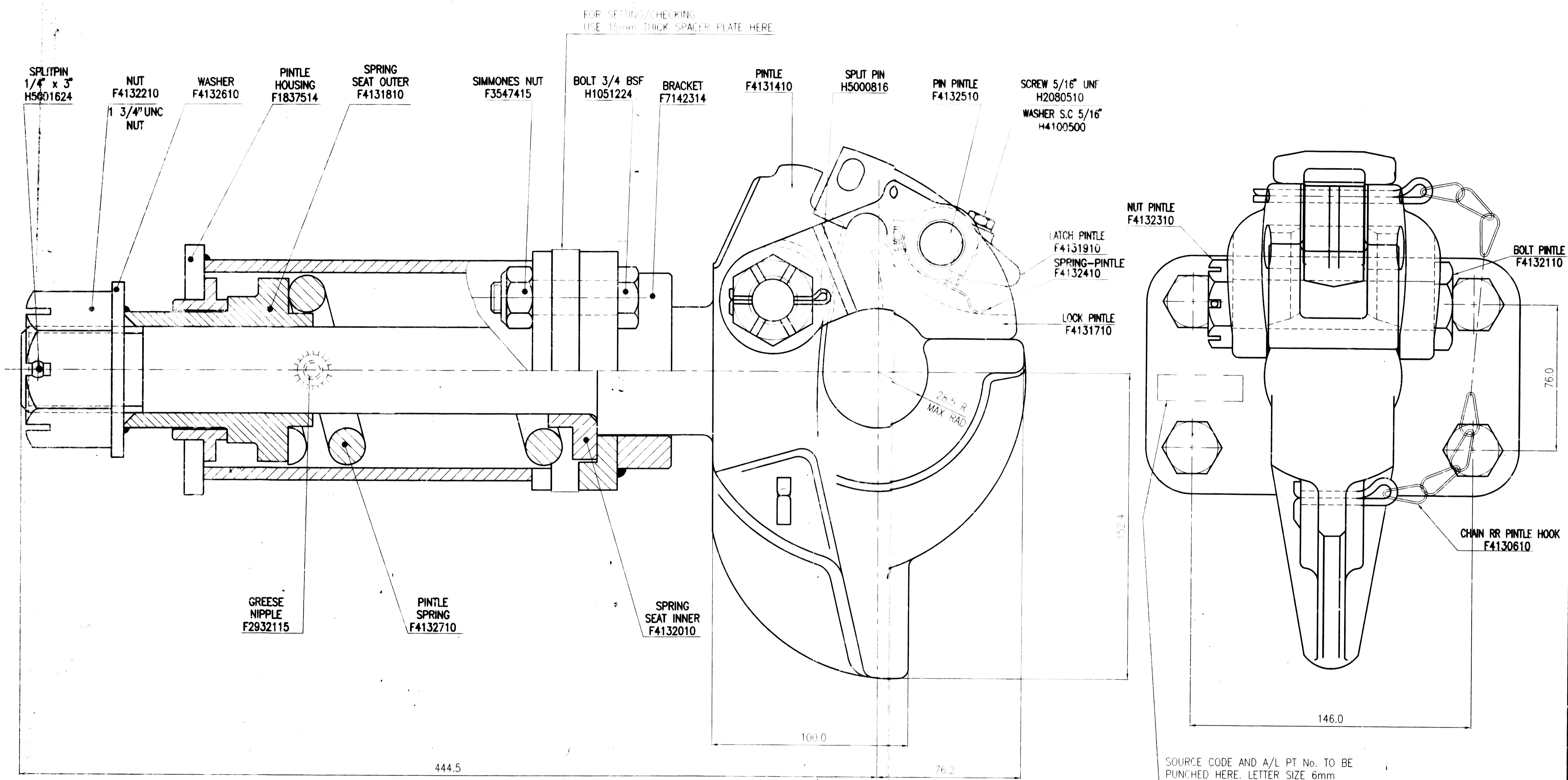
MICRO INCHES	MICROMETRES
BELOW 8	BELOW 0.2
8 - 16	0.2 - 0.4
16 - 32	0.4 - 0.8
32 - 64	0.8 - 1.6
64 - 125	1.6 - 3.2
125 - 250	3.2 - 6.4

**VFJ** PART NO. \_\_\_\_\_

ALTERATIONS

FINISH PAINT TO BE APPLIED READY MIXED BRUSHING/SPRAYING, STOVING ENAMEL TO SPEC. IS:150-1991. COLOUR POST OFFICE RED TO SHADE NO.538 IS:5-1992. WAS FINISH PAINT WITH POST OFFICE RED ENAMEL PAINT. CHANGE NO. S0069 DT. 28.10.2001

ASHOK LEYLAND LTD., HOSSUR



1. SAMPLE TO BE APPROVED BY ALINGG AND ARMY BEFORE BULKY SUPPLY
  2. FINISH PAINT WITH POST OFFICE RED ENAMEL PAINT
- (VI) 2. FINISH PAINT TO BE APPLIED READY MIXED BRUSHING/SPRAYING, STOVING ENAMEL TO SPEC. IS:150-1991. COLOUR POST OFFICE RED TO SHADE NO.538 IS:5-1992.

STAGE	CHECKED	DATE	APPROVED	DATE	ALTERATION LEVEL
I					
II					
III					

SOURCE CODE AND A/L PT No. TO BE PUNCHED HERE. LETTER SIZE 6mm

CAD DRAWING HANDLE IN CAD ONLY

UNLESS OTHERWISE SPECIFIED

FABRICATED COMPONENTS TO BE PHOSPHATED TO CLASS 'C' AS PER IS:3618 AND APPLIED IMMEDIATELY WITH RED OXIDE ZINC CHROMATE PRIMER TO IS:2074.

MACHINED SURFACES TO BE APPLIED WITH RUST PREVENTIVE OIL TO IS:1154.

MACHINING TOLERANCES FOR OPEN DIMENSIONS WILL BE AS PER IS:2102

DIM	0.05	0.1	0.2	0.5	1.0	2.0	5.0	10.0	20.0	50.0	100.0	200.0	500.0	1000.0
±0.1	±0.05	±0.05	±0.05	±0.05	±0.05	±0.05	±0.05	±0.05	±0.05	±0.05	±0.05	±0.05	±0.05	±0.05

SHARP EDGES ARE TO BE REMOVED.

ANGULAR TOLERANCE AS PER IS:2102

METRIC SCREW THREADS SHALL CONFORM TO THE LIMITS AND TOLERANCES SPECIFIED IN THE CURRENT IS:4218. CLASS 6g EXTERNAL OR 5h INTERNAL

ALL DIMENSIONS ARE IN MM

SPECIAL INSTRUCTION NOTE: M L

SL. NO.	PART NUMBER	DESCRIPTION	MATERIAL	QTY
BILL OF MATERIALS				
REF PART NO.	A0700100	ISSUED UNDER	EDM / DIN	DATE
SUPERSIDES				
S/A PART NO.				DATE
WEIGHT	ROUGH	FINISH	SUPPLIER'S DRAWING APPROVAL REQUIRED	Y/N
SCALE	NTS	APPROVAL NUMBER		
SPEC. NO.	ALTH 1/2	TESTING STD.		

REMARKS: FOR STALLION

DESCRIPTION: ASSY TOW HOOK-COMP.

PART NO. **A0700500**

SHEET NO. ONE OF ONE