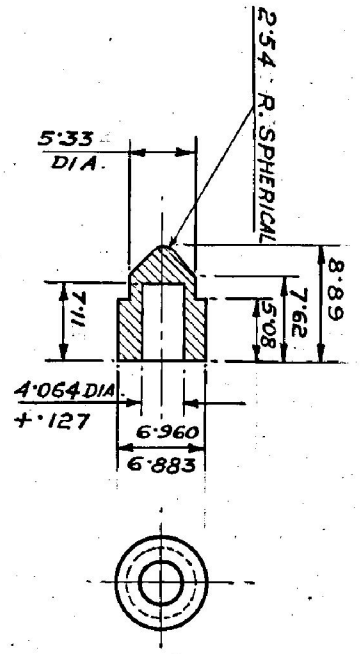


DS. CAT. NO.  
1005-001647

FOR EXPLANATION SEE D.D. NOTE SHEET NO. 3  
THIRD ANGLE PROJECTION. DIMENSIONS ARE IN MILLIMETRES



**NOTE :-**

WHERE TOLERANCES ARE NOT SHOWN  
DIMENSIONS IN WHOLE NUMBER OR WITH ONE DECIMAL PLACE  $\pm 1.27 \text{ mm}$   
DIMENSIONS WITH TWO DECIMAL PLACES  $\pm .13 \text{ mm}$

NOTE FOR SPECN :- FOR SPECU. LATEST ISSUE SHOULD BE FOLLOWED

ALT. MATERIAL :- BS 970 PT.1 GN. 709 M-40  
CONDITION 'W'

FINISH :-  
PHOSPHATE TO SPECIFICATION WPN/GEN3  
CLASS I OIL FINISH.

HARDNESS :- 350 - 400 H.V.  
(52.5-56 HRD)

**METRIC**

1.12.87	19855-SA	ALT. MATERIAL ADDED	10
7/10/86	19326-SA	MATL. AMENDED & NOTE FOR SPECN. ADDED	10
15.2.77	15036-SA	DRG. SEALED	10
DATE	AUTHY. ZONE	NATURE	SIG.

AMENDMENTS

SEALED :- D.C.(I) 15036-SA DT. 15.2.77

MATERIAL :- STEEL BS 970 PT.1, SEC. 4 GN. 832 M-13

PROTECTIVE FINISH :- AS ON DRG.

ESTIMATED WEIGHT :-

SCALE :-

ASSY. DRG. 1005-001643

INSP. INSTRS.

DRAWN CHECKED

TRACED

APPROVED

TRN. CHD.

Arabim

Arifhans

DATE :- 19.6.67

DESIGNER'S REF.

ARDE 657/98

MAT. FOR CISA

M. L. V. / C. D. O.

DS. CAT. NO.

1005-001647

CISA. ICHAPUR

**PLUNGER LEVER CHANGE**

1

2

3

4