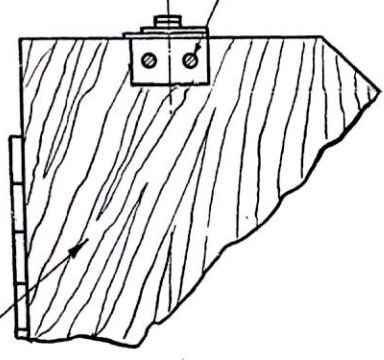


D.C. (1) - 9-S 99 1134-S, 1134-S, 1967-S, 1459-SS, A 97-I, 658-I, 3870-I, 2846-I, 2996-I, 3870-I, 459-I, 5195-I, 5331-I, 6074

DRG. METRICISED AT CII, DEHRA DUN
 C HD:- *K. K. Choudhary*
 DATE:- 30-12-78

TRACED AT CII, DEHRA DUN.
 CHECKED BY:- *M. S. Rawat*
 DATE:- 6.8.74.

EACH PLATE RECESSED FLUSH WITH LID SURFACE
 & SECURED BY SCREW, WOOD, SLOTTED, CSK HEAD, BRASS,
 No. 2 x 10 OF IS: 6760 ----- 2



PLAN VIEW OF BOX WITH LID CLOSED

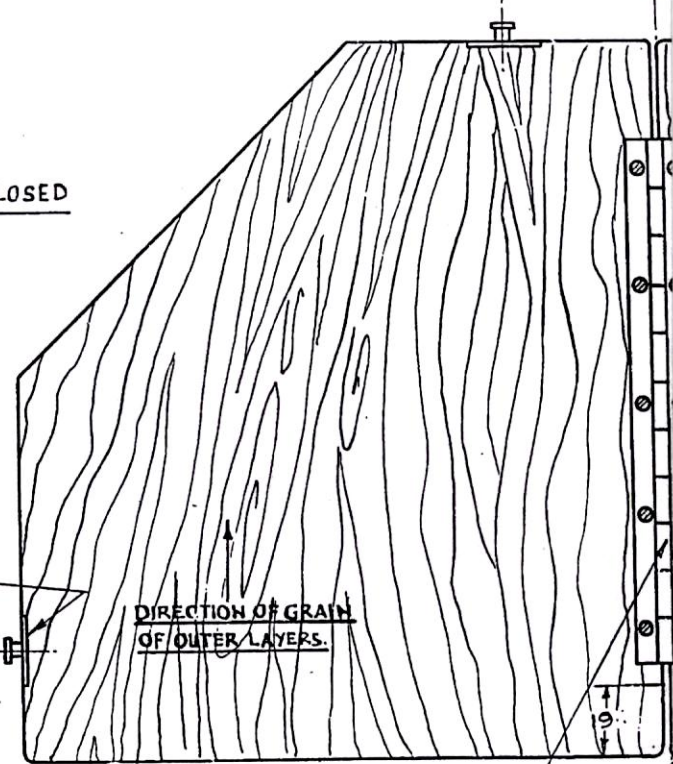
OUTSIDE FACE OF LID TO BE STAMPED OR
 BRANDED WITH 6" TYPE.

1290-000211
 CONTRACTORS MONOGRAM OR INITIALS
 YEAR OF SUPPLY.

EDGES OF EACH PLATE RECESSED
 FLUSH WITH EDGE OF LID

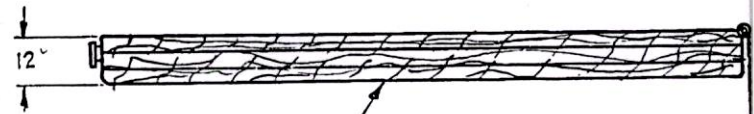
(a) MATL:- OAK, MAHOGANY,
TEAK, SISSOO OR ROSE
OR DEODAR WOOD.

(b) ALTERNATIVE MATL:- MARINE PLY WOOD
 6.0 MM THICK, 5 PLY, IS: 710 TO FABRICATE
 BOTTOM OF THE CASE.



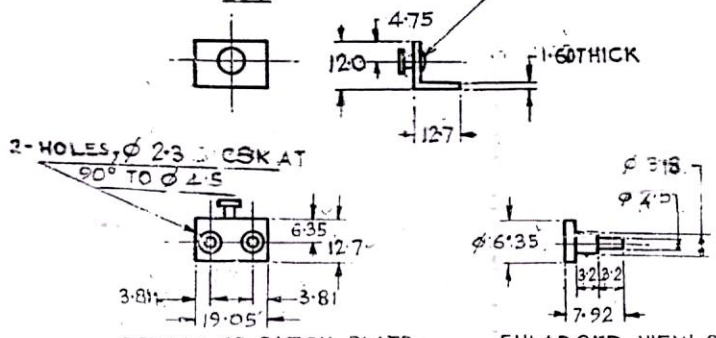
DIRECTION OF GRAIN
 OF OUTER LAYERS.

HINGE, CONTINUOUS (PIANO) 140 LG
 OF IS: 3818 ALONG WITH SECURING
 WOOD SCREWS AS REQUIRED
 (AN APPROVED SUITABLE SIZE)



LID TO BE MADE FROM PLY BOARD
 BWR/BB, 7-PLY x 12 THICK OF IS: 303

PIN TO BE SECURELY RIVETTED
 OVER.

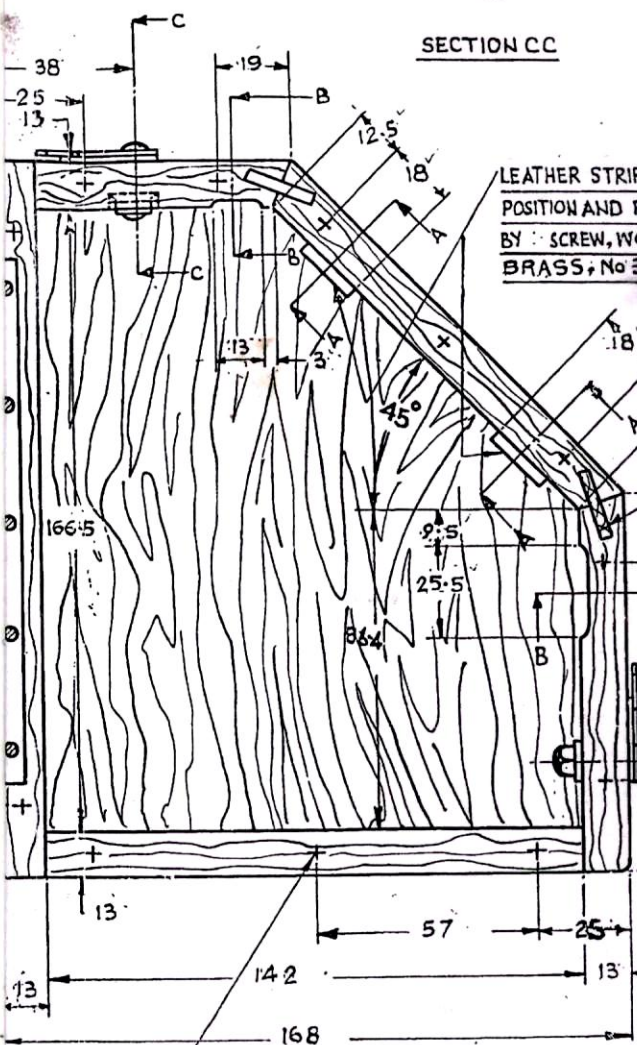
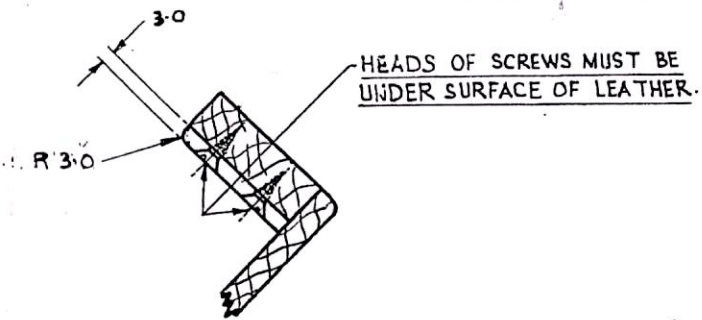
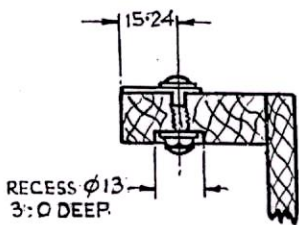


DETAILS OF CATCH PLATE
 BRASS ANGLE & ROD.

ENLARGED VIEW OF PIN
 SCALE:- 2:1

NOTE:-
 INSIDE OF BOX TO HAVE TWO
 VARNISH IS: 337. OUTSIDE OF
 PAINTED IN ACCORDANCE WITH
 IS: 168 ISCT No 220 OLIN

R

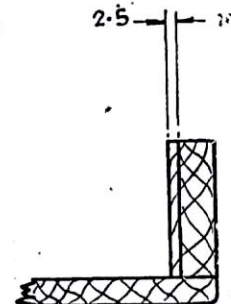


LEATHER STRIPS GLUED IN POSITION AND FURTHER SECURED BY SCREW, WOOD, SLOTTED C SK. HD, BRASS, No 3 x 8 DEJS:6760. --- 2

PART SECTION AA.

FOR TRADE ONLY
Date of Issue 10-4-18
C

TONGUES, 3.0 WIDE
.19 LONG



PART SECTION BB.

HOOK, SAFETY, No 3, MK I, PART No. O.S 33A, DRG No. CII-310 (WITHOUT SCREW, WOOD, SLOTTED, RD. HD, BRASS, No. 4) --- 2

POSITIONS OF SCREWS SECURING BOTTOM

SIDES DOVETAILED & GLUED



BOTTOM GLUED TO SIDES & FURTHER SECURED BY SCREW, WOOD, SLOTTED, CSK. HD, BRASS, No 5 x 15 OF 15: 6760 --- 12

METRIC

PHOTO PRINT NOT TO BE SCALED

COATS OF
BOX TO BE
WITH SPEC.
E GREEN

(C) D.C. (1) - 5331 WOOD SCREWS AMENDED.	30-11-89	CAT/PART No. 1290-000211
(D) D.C. (01) - 5195 - I - ALT. MATL. ADDED.	25-11-87	C.I.A. (O.S) 214
(A) D.C. (1) - 4568 - I. MATL. AMENDED.	17-5-83	DRAWN TRACED CHECKED
D.C. (1) - 310 - I - DRG. METRICISED & SEALED IN SUPERSESSION OF EXISTING ONE.	1-1-79	SCALE:
D.C. (1) - 2995 - I - DRG. TRACED INCORPORATING ALL THE PREVIOUS AMENDMENTS & SEALED IN SUPERSESSION OF EXISTING ONE.	3-1-75	MATL:- SEE ABOVE SEALED: 14-3-22
AMENDMENT	DATE	SUPPLIER'S No. O.S. 11637

CASE, QUADRANT FIRE CONTROL, FIELD MK. I.